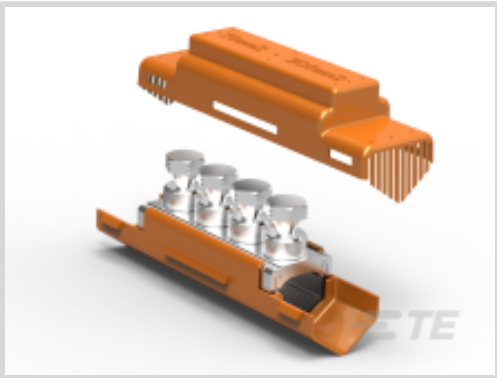




Energy & Power > Power Systems Connectors > Mechanical Connectors



Product Availability: Asia, Australia, New Zealand & Pacific Islands, China, Europe, Middle East & Africa

Installation Technology: Shear Bolt

Voltage Class: ≤ 1 kV

Compatible Conductor Material: Aluminum, Copper

Conductor Type: Solid, Stranded

Features

Product Type Features

Installation Technology	Shear Bolt
-------------------------	------------

Configuration Features

Number of Bolts	4
-----------------	---

Electrical Characteristics

Voltage Class	≤ 1 kV
---------------	--------

Body Features

Compatible Conductor Material	Aluminum, Copper
Conductor Type	Solid, Stranded
Primary Product Material	Aluminum
Blocked	No

Dimensions

Bolt Head Size (Across Flats)	19 mm
Compatible Conductor Cross-Section Range	70 – 300 mm²

Operation/Application

Mechanical Connector Product Type	Bolted Connector
-----------------------------------	------------------

Product Availability

Product Availability	Asia, Australia, New Zealand & Pacific
----------------------	----------------------------------------



Islands, China, Europe, Middle East & Africa

Other

Conductor Gauge Type	Metric
----------------------	--------

Product Compliance

For compliance documentation, visit the product page on TE.com>

EU RoHS Directive 2011/65/EU	Compliant with Exemptions
EU ELV Directive 2000/53/EC	Compliant with Exemptions
China RoHS 2 Directive MIIT Order No 32, 2016	Restricted Materials Above Threshold
EU REACH Regulation (EC) No. 1907/2006	Current ECHA Candidate List: JAN 2025 (247) Candidate List Declared Against: JAN 2025 (247) SVHC > Threshold: Pb (1.5% in 74023549) Article Safe Usage Statements: Do not eat, drink or smoke when using this product. Wash thoroughly after handling. Recycle if possible and dispose of the article by following all applicable governmental regulations relevant to your geographic location.
Halogen Content	Low Halogen - Br, Cl, F, I < 900 ppm per homogenous material. Also BFR/CFR/PVC Free
Solder Process Capability	Not applicable for solder process capability

Product Compliance Disclaimer

This information is provided based on reasonable inquiry of our suppliers and represents our current actual knowledge based on the information they provided. This information is subject to change. The part numbers that TE has identified as EU RoHS compliant have a maximum concentration of 0.1% by weight in homogenous materials for lead, hexavalent chromium, mercury, PBB, PBDE, DBP, BBP, DEHP, DIBP, and 0.01% for cadmium, or qualify for an exemption to these limits as defined in the Annexes of Directive 2011/65/EU (RoHS2). Finished electrical and electronic equipment products will be CE marked as required by Directive 2011/65/EU. Components may not be CE marked. Additionally, the part numbers that TE has identified as EU ELV compliant have a maximum concentration of 0.1% by weight in homogenous materials for lead, hexavalent chromium, and mercury, and 0.01% for cadmium, or qualify for an exemption to these limits as defined in the Annexes of Directive 2000/53/EC (ELV). Regarding the REACH Regulation, the information TE provides on SVHC in articles for this part number is based on the latest European Chemicals Agency (ECHA) 'Guidance on requirements for substances in articles' posted at this URL: <https://echa.europa.eu/guidance-documents/guidance-on-reach>

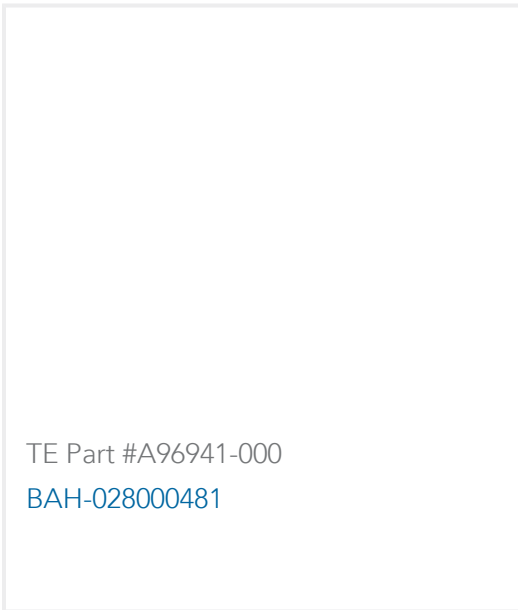
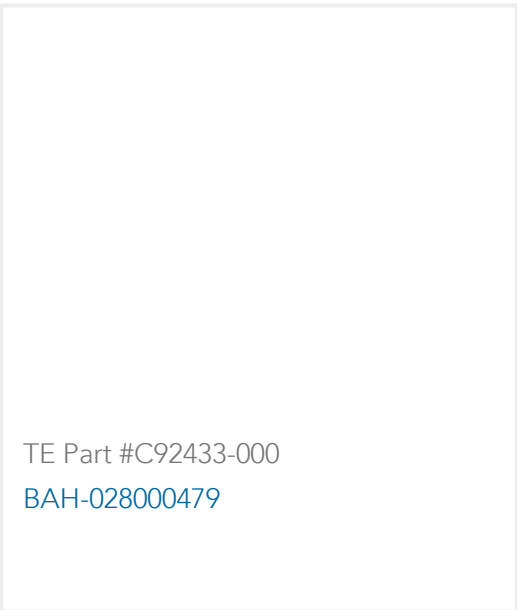
Compatible Parts



Also in the Series | **B&H UST**



Customers Also Bought





Documents

Product Drawings

BAH-032020081

English

Datasheets & Catalog Pages

UNIVERSAL STRAIGHT JOINT CONNECTORS WITH MOULDED INSULATION SHROUDS

English