



Energy & Power > Power Cable Accessories > Joints & Splices > Inline Joint: Cold Shrink, Straight up to 42 kV



Installation Technology: Cold Applied

Product Availability: Americas, Asia, Australia, New Zealand & Pacific Islands, China, Europe, Middle East & Africa

Installation Instruction: English

Voltage Class: ≤ 12 kV

Joints & Splice Product Type: Straight Joint

[All Inline Joint: Cold Shrink, Straight up to 42 kV \(41\)](#)

Features

Product Type Features

Coating Style	Painting
Material System	Silicone
Shelf Life	2 Years
Cable Sealing Method	Mastic
Joints & Splices Connector Type	Mechanical
Adhesive Coating	Without
Power Component Options	Mechanical Connectors Included
Installation Technology	Cold Applied
Joints & Splice Product Type	Straight Joint
Cable Shield Style	Concentric Neutral, FS, Tape

Configuration Features

Number of Cores	1
-----------------	---

Electrical Characteristics

Voltage Class	≤ 12 kV
---------------	---------

Body Features

Primary Product Color	Black
-----------------------	-------



Flexibility	Semi-Flexible
Insulation Material	Silicone Rubber

Dimensions

Compatible Conductor Cross-Section Range	630 mm²
Compatible Insulation Diameter Range	38 – 40 mm[1.49 – 1.57 in]
Compatible Cable Cross-Section - Main (Max)	630 mm²
Compatible Cable Cross-Section - Main (Min)	630 mm²
Compatible Conductor Diameter Range	29.3 – 32.5 mm[1.15 – 1.279 in]
Sheath Outside Diameter	47 – 52 mm[1.85 – 2.04 in]

Industry Standards

Compatible With Approved Standards Products	HD CENELEC 629.1
---	------------------

Product Availability

Product Availability	Americas, Asia, Australia, New Zealand & Pacific Islands, China, Europe, Middle East & Africa
----------------------	---

Packaging Features

Packaging Quantity	1
--------------------	---

Other

Product Use	Power Cables
Installation Instruction	English

Product Compliance

For compliance documentation, visit the product page on TE.com>

EU RoHS Directive 2011/65/EU	Compliant with Exemptions
EU ELV Directive 2000/53/EC	Compliant with Exemptions
China RoHS 2 Directive MIIT Order No 32, 2016	Restricted Materials Above Threshold
EU REACH Regulation (EC) No. 1907/2006	Current ECHA Candidate List: JAN 2025 (247) Candidate List Declared Against: JAN 2025 (247) SVHC > Threshold: Pb (1.5% in 74023549) <small>Article Safe Usage Statements: Do not eat, drink or smoke when using this product. Wash thoroughly after handling. Recycle if possible and dispose of the article by following all applicable governmental regulations relevant to your geographic location.</small>
Halogen Content	Low Halogen - Br, Cl, F, I < 900 ppm per homogenous material. Also BFR/CFR/PVC



	Free
Solder Process Capability	Not applicable for solder process capability


Product Compliance Disclaimer

This information is provided based on reasonable inquiry of our suppliers and represents our current actual knowledge based on the information they provided. This information is subject to change. The part numbers that TE has identified as EU RoHS compliant have a maximum concentration of 0.1% by weight in homogenous materials for lead, hexavalent chromium, mercury, PBB, PBDE, DBP, BBP, DEHP, DIBP, and 0.01% for cadmium, or qualify for an exemption to these limits as defined in the Annexes of Directive 2011/65/EU (RoHS2). Finished electrical and electronic equipment products will be CE marked as required by Directive 2011/65/EU. Components may not be CE marked. Additionally, the part numbers that TE has identified as EU ELV compliant have a maximum concentration of 0.1% by weight in homogenous materials for lead, hexavalent chromium, and mercury, and 0.01% for cadmium, or qualify for an exemption to these limits as defined in the Annexes of Directive 2000/53/EC (ELV). Regarding the REACH Regulations, TE’s information on SVHC in articles for this part number is still based on the European Chemical Agency (ECHA) ‘Guidance on requirements for substances in articles’(Version: 2, April 2011), applying the 0.1% weight on weight concentration threshold at the finished product level. TE is aware of the European Court of Justice ruling of September 10th, 2015 also known as O5A (Once An Article Always An Article) stating that, in case of ‘complex object’, the threshold for a SVHC must be applied to both the product as a whole and simultaneously to each of the articles forming part of its composition. TE has evaluated this ruling based on the new ECHA “Guidance on requirements for substances in articles” (June 2017, version 4.0) and will be updating its statements accordingly.

Compatible Parts




TE Part # CAT-ALROC-TOOLING
ALROC Cable Preparation Tooling



TE Part # CAT-CSJA-STRAIGHT
Inline Joint: Cold Shrink, Straight up to 42 kV

Also in the Series | RAYCHEM CSJ



Joints & Splices(161)

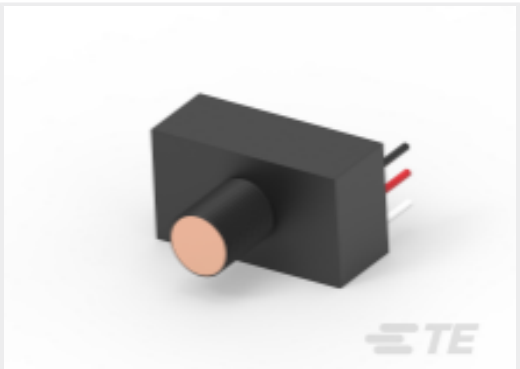
Customers Also Bought



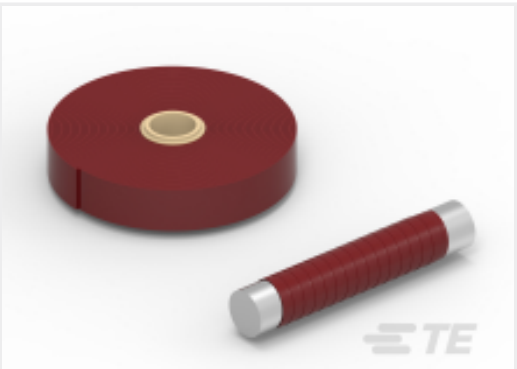
TE Part #C70612-000
[BISG-G-60/115-02\(S10\)](#)



TE Part #A90301-000
[BCAC-G-5D/8-01\(B12\)](#)



TE Part #499268-000
[ALR-AA-105](#)



TE Part #CM6539-000
[HVBT-1-R-01\(B8\)](#)



TE Part #493165-000
[HVES-1523D](#)



TE Part #CF6026-000
[CSJA-1522](#)



TE Part #CL7586-000
[HVS-C-1523S](#)



TE Part #CAT-ASBS
[Shear Bolt Connectors up to 35 kV](#)



TE Part #1974102-1
[CSBS-300-750](#)

Documents

Product Drawings

[CSJA-12E/1XU-1XU-M2](#)

English

Datasheets & Catalog Pages

[CSJA-COLD SHRINK STRAIGHT JOINTS IEC](#)

English