

AS214-35PA

✓ ACTIVE

DEUTSCH | DEUTSCH AS Standard

TE Internal #: AS214-35PA

Wire-to-Board, Circular Connector Receptacle, 37 Position, Shell Size 14, Sealable, Black Zinc, Aluminum Alloy, Code A, DEUTSCH AS Standard

[View on TE.com >](#)



Connectors > Circular Connectors > Standard Circular Connectors



Connector System: **Wire-to-Board**
Number of Positions: **37**
Sealable: **Yes**
Shell Plating Material: **Black Zinc**
Shell Base Material: **Aluminum Alloy**

Features

Product Type Features

Connector Product Type	Connector Assembly
Assembly Type	Electrical Connector
Connector System	Wire-to-Board
Sealable	Yes
Circular Connector Type	Circular Connector Receptacle
Shell Type	Metal

Configuration Features

Factory Installed Backshell	No
Number of Positions	37
Contacts Preloaded	Yes

Body Features

Entry Style	Rear Insertion
Environmental Protection	With
Environmental Protection Type	Sealed
Feedthrough Type	No
Shell Plating Material	Black Zinc
Shell Base Material	Aluminum Alloy



Circular Connector Insulation Material Type	Hard Dielectric/Silicone
Hermetically Sealed	No

Contact Features

Contact Quantity (Size 22D)	37
Contact Layout Arrangement	14 – 35
Circular Connector Contact Type	Pin

Mechanical Attachment

Mating Retention Type	Bayonet Peg
Panel Mount Feature Type	2 Hole Flange
Mating Alignment	With
Polarization Code	A
Mating Alignment Type	Keyed
Mating Retention	With

Housing Features

Circular Connector Shell Size	14
-------------------------------	----

Usage Conditions

IP Dust Sealing Level	6
IP Water Sealing Level	7
Fluid Resistance	Immersion
Operating Temperature Range	-55 – 175 °C[-67 – 347 °F]

Operation/Application

Durability Rating	500 Cycles
-------------------	------------

Other

Field Serviceable	Yes
-------------------	-----

Product Compliance

For compliance documentation, visit the product page on TE.com>

EU RoHS Directive 2011/65/EU	Compliant
EU ELV Directive 2000/53/EC	Compliant
China RoHS 2 Directive MIIT Order No 32, 2016	有害物质含量符合标准要求 No Restricted Substance(s) Above Threshold
EU REACH Regulation (EC) No. 1907/2006	Current ECHA Candidate List: JUNE 2025 (250)



Candidate List Declared Against: JAN 2019 (197)
Does not contain REACH SVHC

Halogen Content	Not Yet Reviewed for halogen content
Solder Process Capability	Reflow solder capable to 245°C

Product Compliance Disclaimer

This information is provided based on reasonable inquiry of our suppliers and represents our current actual knowledge based on the information they provided. This information is subject to change. The part numbers that TE has identified as EU RoHS compliant have a maximum concentration of 0.1% by weight in homogenous materials for lead, hexavalent chromium, mercury, PBB, PBDE, DBP, BBP, DEHP, DIBP, and 0.01% for cadmium, or qualify for an exemption to these limits as defined in the Annexes of Directive 2011/65/EU (RoHS2). Finished electrical and electronic equipment products will be CE marked as required by Directive 2011/65/EU. Components may not be CE marked. Additionally, the part numbers that TE has identified as EU ELV compliant have a maximum concentration of 0.1% by weight in homogenous materials for lead, hexavalent chromium, and mercury, and 0.01% for cadmium, or qualify for an exemption to these limits as defined in the Annexes of Directive 2000/53/EC (ELV). Regarding the REACH Regulation, the information TE provides on SVHC in articles for this part number is based on the latest European Chemicals Agency (ECHA) ‘Guidance on requirements for substances in articles’ posted at this URL: <https://echa.europa.eu/guidance-documents/guidance-on-reach>

Compatible Parts

TE Part # ZPF0000000000000867
[PINCE AFM-8](#)

Also in the Series | **DEUTSCH AS Standard**

[Connector Caps & Covers\(22\)](#)

[Standard Circular Connectors\(543\)](#)

Customers Also Bought



TE Part #657863-000
S1125-KIT-8



TE Part #CAT-HST-RNF100-0
RNF-100-0 Heat Shrink Tubing



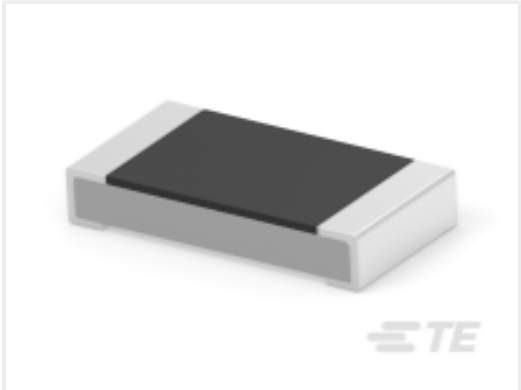
TE Part #31428
TERMINAL,BUDG R 26-22 4



TE Part #1-1757820-0
AMPLIMITE,ASY,RCPT,STD,109,ZN,5,CT



TE Part #4-1879208-9
CPF 0402 1K0 0.1% 25PPM 1K RL



TE Part #6-2176392-9
RQ 1206 681K 0.1% 10PPM 5K RL



TE Part #5207719-3
KIT SCREWLOCK FEMALE CLEAR ZIN



TE Part #2362764-4
MATENET,CABLE ASSY,1 GBPS UTP

Documents

Product Drawings

RECEPT.BOX MNTG. TYPE 2

English

Datasheets & Catalog Pages

DEUTSCH Autosport Interconnection Solutions

English

AS Micro Xtra Lite HE

English