



Switches > Push Button Switches



Configuration (Pole-Throw): **Single Pole - Single Throw**

Push Button Switch Product Type: **General Purpose Push Button Switch**

Number of Actuators: **Single**

Actuator Profile: **Extended**

Bushing Style: **Unthreaded**

Features

Product Type Features

Switch Connection Type	Printed Circuit
Push Button Switch Product Type	General Purpose Push Button Switch
Illuminated	Without
Actuator Style	Round Actuator

Configuration Features

Configuration (Pole-Throw)	Single Pole - Single Throw
Number of Actuators	Single
Snap Action	Without
Support Bracket	Without
Switch Feedback Type	Non-Tactile
Operating Function	NO, Momentary

Electrical Characteristics

Contact Current Rating	.4 A
Operating Voltage Range	20 VDC

Body Features

Case Material	Polyester
Actuator Material	Polyamide
Product Orientation	Right Angle



Actuator Force	50 – 400 g[1.77 – 14.12 oz]
Actuator Profile	Extended
Bushing Style	Unthreaded
Actuator Color	Red

Contact Features

Contact Base Material	Copper Alloy
Switch Contact Plating Material	Gold over Nickel

Termination Features

Termination Method to PCB	Through Hole - Solder
---------------------------	-----------------------

Housing Features

Low Profile	No
Process Sealed	No

Dimensions

Button Width	3.3 mm[.13 in]
Bushing Diameter	6.35 mm[.25 in]
Actuator Length	4.01 mm[.158 in]

Usage Conditions

Operating Temperature Range	-30 – 65 °C[-22 – 149 °F]
-----------------------------	---------------------------

Packaging Features

Packaging Method	Bulk
------------------	------

Product Compliance

For compliance documentation, visit the product page on TE.com>

EU RoHS Directive 2011/65/EU	Not Compliant
EU ELV Directive 2000/53/EC	Compliant with Exemptions
China RoHS 2 Directive MIIT Order No 32, 2016	Restricted Materials Above Threshold
EU REACH Regulation (EC) No. 1907/2006	Current ECHA Candidate List: JUNE 2025 (250) Candidate List Declared Against: JAN 2025 (247) SVHC > Threshold: Pb (13% in 4690971273) Article Safe Usage Statements: Do not eat, drink or smoke when using this product. Wash thoroughly after handling. Recycle if possible and dispose of the article by following all applicable governmental regulations relevant to your geographic location.
Halogen Content	Low Halogen - Br, Cl, F < 900 ppm per



homogenous material. Also BFR/CFR/PVC Free

Solder Process Capability

Wave solder capable to 265°C

Product Compliance Disclaimer

This information is provided based on reasonable inquiry of our suppliers and represents our current actual knowledge based on the information they provided. This information is subject to change. The part numbers that TE has identified as EU RoHS compliant have a maximum concentration of 0.1% by weight in homogenous materials for lead, hexavalent chromium, mercury, PBB, PBDE, DBP, BBP, DEHP, DIBP, and 0.01% for cadmium, or qualify for an exemption to these limits as defined in the Annexes of Directive 2011/65/EU (RoHS2). Finished electrical and electronic equipment products will be CE marked as required by Directive 2011/65/EU. Components may not be CE marked. Additionally, the part numbers that TE has identified as EU ELV compliant have a maximum concentration of 0.1% by weight in homogenous materials for lead, hexavalent chromium, and mercury, and 0.01% for cadmium, or qualify for an exemption to these limits as defined in the Annexes of Directive 2000/53/EC (ELV). Regarding the REACH Regulations, TE’s information on SVHC in articles for this part number is still based on the European Chemical Agency (ECHA) ‘Guidance on requirements for substances in articles’(Version: 2, April 2011), applying the 0.1% weight on weight concentration threshold at the finished product level. TE is aware of the European Court of Justice ruling of September 10th, 2015 also known as O5A (Once An Article Always An Article) stating that, in case of ‘complex object’, the threshold for a SVHC must be applied to both the product as a whole and simultaneously to each of the articles forming part of its composition. TE has evaluated this ruling based on the new ECHA “Guidance on requirements for substances in articles” (June 2017, version 4.0) and will be updating its statements accordingly.

Compatible Parts



TE Part # 1437571-4
TP11CGPC0=SWITCH P/B N/O BLACK



TE Part # 1825095-1
TP11CGPC004



TE Part # 1825095-3
TP11CGRA004

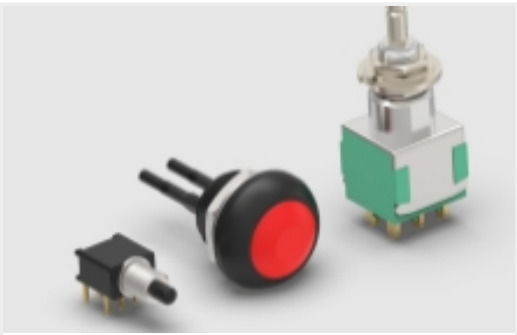


TE Part # 1825095-2
TP11CGPC204



TE Part # 7-1437571-7
TPB11FGVRA0=TINY PUSHBUTTON

Also in the Series | ALCOSWITCH TPD



General Purpose Push Button Switches (7)



Push Button Switches(7)

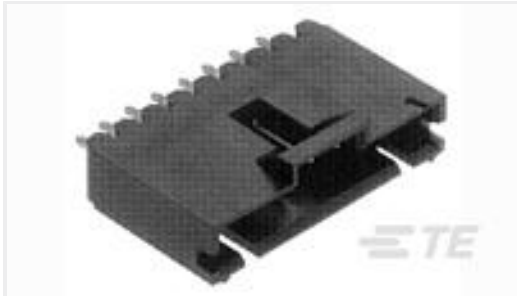
Customers Also Bought



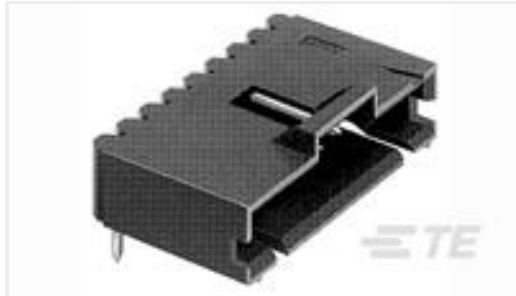
TE Part #DT15-12PB-G003
HDR, 12P, BRK, ST, AU/NI/CU, B



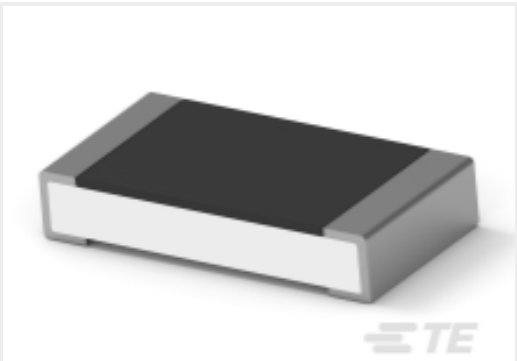
TE Part #2-36451-1
TERMINAL,SOLIS R 12-10 10



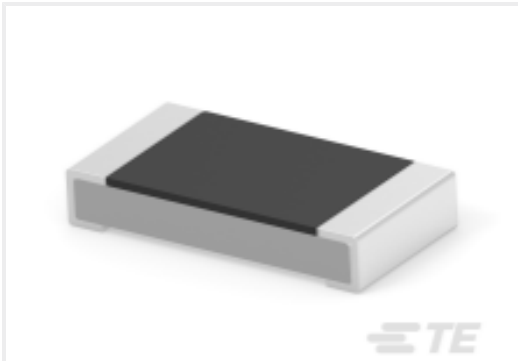
TE Part #1-103735-0
11 MTE HDR SRST LATCH .100CL



TE Part #6-104935-1
11 MTE HDR SRRA LTCH.100CL LF



TE Part #9-2176391-2
RQ 1206 110K 0.1% 10PPM 5K RL



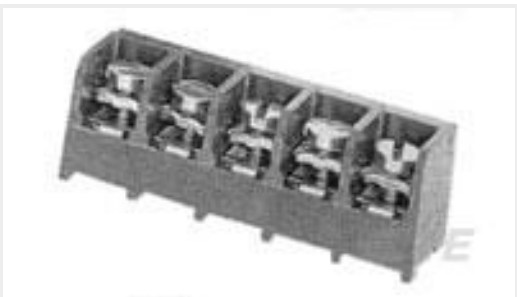
TE Part #7-2176392-9
RQ 1206 866K 0.1% 10PPM 5K RL



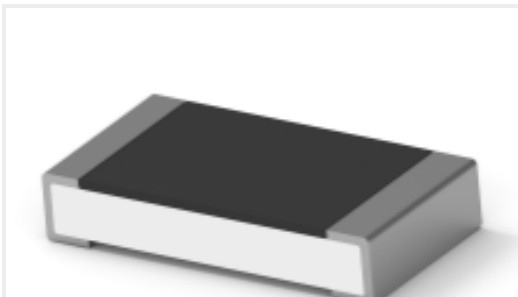
TE Part #2-1437571-5
TPA11CGPC0=SWITCH P/B N/O BLAC



TE Part #6-1437561-1
TT11EGRA1=TINY TOGGLE



TE Part #1437653-8
6PCV-07-007=6PCV ASSEMBLY



TE Part #4-2176391-3
RQ 1206 34K 0.1% 10PPM 5K RL

Documents

CAD Files

3D PDF

3D

Customer View Model

ENG_CVM_CVM_5-1437572-2_A_c-5-1437572-2-a.2d_dxf.zip

English

Customer View Model

ENG_CVM_CVM_5-1437572-2_A_c-5-1437572-2-a.3d_igs.zip



English

Customer View Model

[ENG_CVM_CVM_5-1437572-2_A_c-5-1437572-2-a.3d_stp.zip](#)

English

By downloading the CAD file I accept and agree to the [Terms and Conditions](#) of use.

Datasheets & Catalog Pages

[TP Series Data Sheet](#)

English