



Switches > Push Button Switches



Configuration (Pole-Throw): **Double Pole - Double Throw**

Number of Actuators: **Single**

Actuator Profile: **Extended**

Bushing Style: **Threaded**

Bushing Thread Size: **15/32**

Features

Product Type Features

Switch Connection Type	Printed Circuit
Illuminated	Without
Actuator Style	Cap Actuator - Supplied

Configuration Features

Configuration (Pole-Throw)	Double Pole - Double Throw
Number of Actuators	Single
Snap Action	Without
Support Bracket	Without
Switch Feedback Type	Non-Tactile
Operating Function	Push-On/Push-Off

Electrical Characteristics

Contact Current Rating	6 A
Operating Voltage Range	28 VDC

Body Features

Case Material	Thermoset
Actuator Material	Phenol Resin
Product Orientation	Vertical
Actuator Force	400 – 2000 g[14.11 – 70.54 oz]
Actuator Profile	Extended



Bushing Style	Threaded
Bushing Thread Size	15/32
Actuator Color	Natural

Contact Features

Contact Base Material	Silver Clad Copper
Switch Contact Plating Material	Silver Clad with Gold Flash

Housing Features

Low Profile	No
Process Sealed	No

Dimensions

Cap Diameter	8.99 mm[.354 in]
Actuator Length	8 mm[.315 in]

Packaging Features

Packaging Method	Bulk
------------------	------

Product Compliance

For compliance documentation, visit the product page on TE.com>

EU RoHS Directive 2011/65/EU	Not Yet Reviewed
EU ELV Directive 2000/53/EC	Not Yet Reviewed
China RoHS 2 Directive MIIT Order No 32, 2016	No Restricted Materials Above Threshold
EU REACH Regulation (EC) No. 1907/2006	Current ECHA Candidate List: JUNE 2025 (250) Candidate List Declared Against: JUN 2016 (169) SVHC > Threshold: Not Yet Reviewed
Halogen Content	Low Halogen - Br, Cl, F < 900 ppm per homogenous material. Also BFR/CFR/PVC Free
Solder Process Capability	Wave solder capable to 240°C

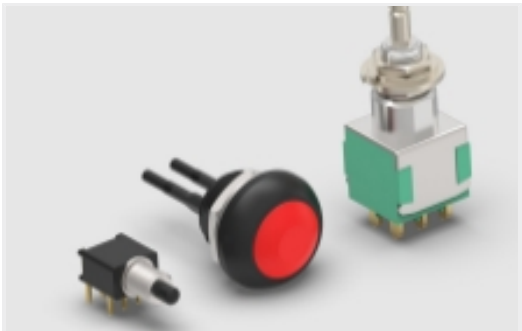
Product Compliance Disclaimer

This information is provided based on reasonable inquiry of our suppliers and represents our current actual knowledge based on the information they provided. This information is subject to change. The part numbers that TE has identified as EU RoHS compliant have a maximum concentration of 0.1% by weight in homogenous materials for lead, hexavalent chromium, mercury, PBB, PBDE, DBP, BBP, DEHP, DIBP, and 0.01% for cadmium, or qualify for an exemption to these limits as defined in the Annexes of Directive 2011/65/EU (RoHS2). Finished electrical and electronic equipment products will be CE marked as required by Directive 2011/65/EU. Components may not be CE marked. Additionally, the part numbers that TE has identified as EU ELV compliant have a maximum concentration of 0.1% by weight in homogenous



materials for lead, hexavalent chromium, and mercury, and 0.01% for cadmium, or qualify for an exemption to these limits as defined in the Annexes of Directive 2000/53/EC (ELV). Regarding the REACH Regulations, TE’s information on SVHC in articles for this part number is still based on the European Chemical Agency (ECHA) ‘Guidance on requirements for substances in articles’(Version: 2, April 2011), applying the 0.1% weight on weight concentration threshold at the finished product level. TE is aware of the European Court of Justice ruling of September 10th, 2015 also known as O5A (Once An Article Always An Article) stating that, in case of ‘complex object’, the threshold for a SVHC must be applied to both the product as a whole and simultaneously to each of the articles forming part of its composition. TE has evaluated this ruling based on the new ECHA “Guidance on requirements for substances in articles” (June 2017, version 4.0) and will be updating its statements accordingly.

Also in the Series | ALCOSWITCH MPG



General Purpose Push Button Switches (9)



Push Button Switches(9)

Customers Also Bought



TE Part #5-1879132-6
RN 0402 34K 0.1% 10PPM 1K RL



TE Part #2-1879749-1
LED ENCODER 12MM HORIZ SW BL /OR



TE Part #3-2176416-7
9W STD M/OX 5% 1K6



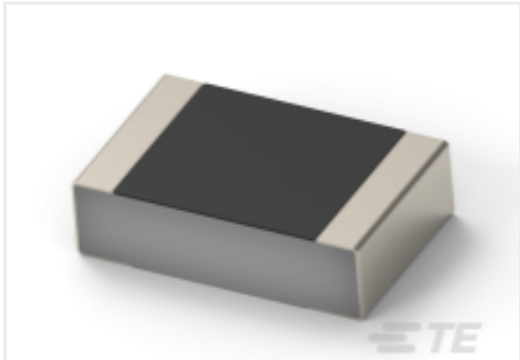
TE Part #2-6450880-5
MBXL R/A RCPT 1LP + 8S + 1LP



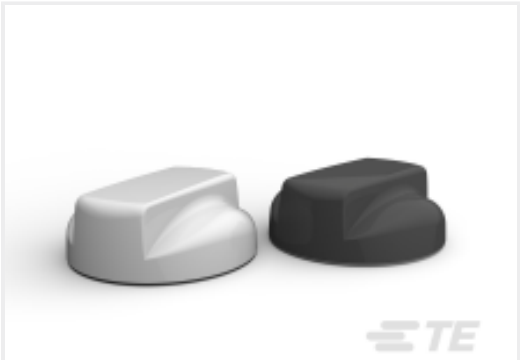
TE Part #4-1624108-8
3640 0402 2.6nH +/-0.2nH 1K RL



TE Part #1623858-5
409V 1M



TE Part #3-2176074-2
CPF 0201 12K1 0.5% 50PPM 1K RL



TE Part #1-2823596-1
LOW PROFILE 2G/3G/4G,MIMO WHITE ANTENNA



TE Part #1379684-4
HEADER ASSY, .025 SERIES, 8W, R. ANGLE



TE Part #2176067-6
CRG0201 1% 12R7



Documents

Product Drawings

MPG206NPC=(MSPG) SW P/B DPDT P

English

CAD Files

3D PDF

3D

Customer View Model

ENG_CVM_CVM_5-1437567-2_D.2d_dxf.zip

English

Customer View Model

ENG_CVM_CVM_5-1437567-2_D.3d_igs.zip

English

Customer View Model

ENG_CVM_CVM_5-1437567-2_D.3d_stp.zip

English

By downloading the CAD file I accept and agree to the [Terms and Conditions](#) of use.

Datasheets & Catalog Pages

2-1773458-6_GREEN_SERIES_SWITCHES

English