



Automotive Parts > Automotive Connectors > Automotive Housings



Nominal Voltage Architecture: 12 V

Connector & Housing Type: **Housing for Male Terminals**

Number of Positions: 13

Sealable: No

Operating Temperature Range: -40 – 125 °C [-40 – 257 °F]

Features

Product Type Features

Mixed & Hybrid Connector	Yes
Connector Shape	Rectangular
Connector & Housing Type	Housing for Male Terminals
Sealable	No
Primary Locking Feature	Clean Body, Integrated in Housing
Connector System	Wire-to-Wire
Connector & Contact Terminates To	Wire & Cable

Configuration Features

Number of Positions	13
Number of Rows	3

Electrical Characteristics

Operating Voltage	14 VDC
Nominal Voltage Architecture	12 V

Body Features



Cable Exit Angle	180 °
Primary Product Color	Black
Connector & Keying Code	A

Contact Features

Contact Size	.64mm, 1.5mm, 2.8mm
Contact Type	Tab
Mating Tab Width	.64 mm, 1.5 mm, 2.8 mm [.02 in][.06 in][.11 in]
Contact Current Rating (Max)	7.5 A, 15 A, 30 A

Mechanical Attachment

Strain Relief	Without
Terminal Position Assurance	No
Mating Alignment Type	Keyed
Mating Alignment	With
Connector Mounting Type	Cable Mount (Free-Hanging)

Housing Features

Housing Material	PBT GF30
Centerline (Pitch)	2.54 mm, 3.7 mm [.1 in][.14 in]

Dimensions

Row-to-Row Spacing	6.5 mm [.25 in]
Product Width	44.7 mm [1.75 in]
Product Length	26.1 mm [1.02 in]
Connector Height	27.3 mm [1.07 in]

Usage Conditions

Operating Temperature Range	-40 – 125 °C [-40 – 257 °F]
Operating Temperature (Max)	125 °C [257 °F]

Operation/Application

Circuit Application	Power & Signal
---------------------	----------------

Packaging Features

Packaging Quantity	700
Packaging Method	Box

Other

--	--



Serviceable	Yes
Connector Position Assurance Capable	No

Product Compliance

For compliance documentation, visit the product page on TE.com>

EU RoHS Directive 2011/65/EU	Compliant
EU ELV Directive 2000/53/EC	Compliant
China RoHS 2 Directive MIIT Order No 32, 2016	有害物质含量符合标准要求 No Restricted Substance(s) Above Threshold
EU REACH Regulation (EC) No. 1907/2006	Current ECHA Candidate List: JUNE 2025 (250) Candidate List Declared Against: JUNE 2025 (250) Does not contain REACH SVHC
Halogen Content	Low Halogen - Br, Cl, F < 900 ppm per homogenous material. Also BFR/CFR/PVC Free
Solder Process Capability	Not reviewed for solder process capability

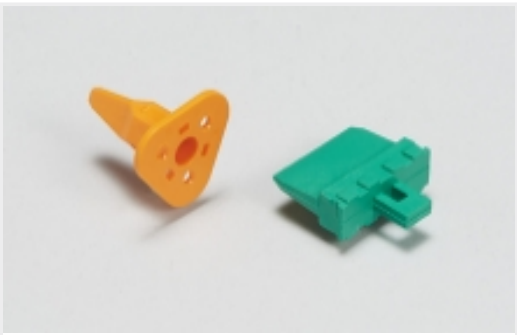
Product Compliance Disclaimer

This information is provided based on reasonable inquiry of our suppliers and represents our current actual knowledge based on the information they provided. This information is subject to change. The part numbers that TE has identified as EU RoHS compliant have a maximum concentration of 0.1% by weight in homogenous materials for lead, hexavalent chromium, mercury, PBB, PBDE, DBP, BBP, DEHP, DIBP, and 0.01% for cadmium, or qualify for an exemption to these limits as defined in the Annexes of Directive 2011/65/EU (RoHS2). Finished electrical and electronic equipment products will be CE marked as required by Directive 2011/65/EU. Components may not be CE marked. Additionally, the part numbers that TE has identified as EU ELV compliant have a maximum concentration of 0.1% by weight in homogenous materials for lead, hexavalent chromium, and mercury, and 0.01% for cadmium, or qualify for an exemption to these limits as defined in the Annexes of Directive 2000/53/EC (ELV). Regarding the REACH Regulation, the information TE provides on SVHC in articles for this part number is based on the latest European Chemicals Agency (ECHA) ‘Guidance on requirements for substances in articles’ posted at this URL: <https://echa.europa.eu/guidance-documents/guidance-on-reach>

Compatible Parts



Also in the Series | MCON Interconnection System



Automotive Connector Locks & Position Assurance(16)



Automotive Housings(117)



Automotive Seals & Cavity Plugs(12)



Automotive Signal & Power Connector Housings(116)

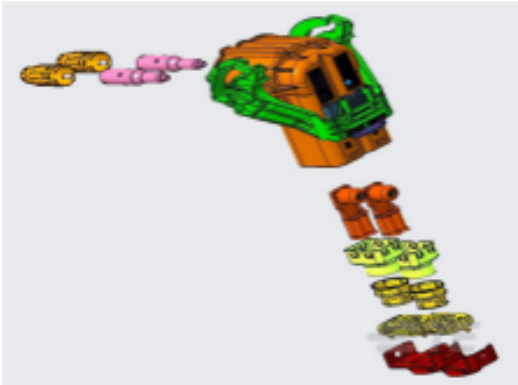


Other Automotive Connector Accessories(1)

Customers Also Bought



TE Part #634121-000
D-406-2006



TE Part #YHV800-2P-90-50M-B
HVP800-2PHI XE,90,50SQMM,KEY B



TE Part #5-965906-6
MQS0,63 Ag rec LL EDS 0,5-0,75



TE Part #1-1718644-6
3POS, MCON 1.2 LL REC SEALED



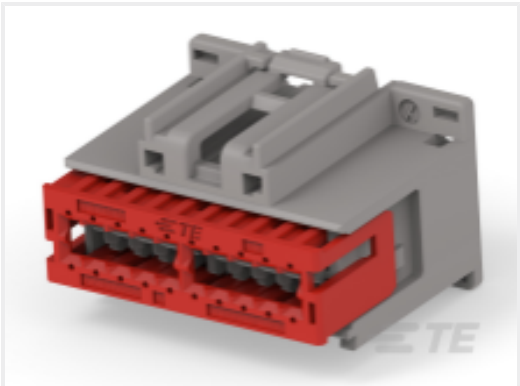
TE Part #1719671-1
COVER MQS CB 90



TE Part #5-2109455-2
050/110 48P CAP ASSY CODE A



TE Part #2141648-1
13POS, MIXED,REC HSG,ASSY,CODA



TE Part #1-2236266-2
20POS,0.64 GENER. Y,REC HSG,ASSY, CODB



TE Part #2-2236896-1
2POS, MCON 1.2 LL REC SEALED



TE Part #1-2294256-1
4POS, MCON 1.2 LL REC SEALED

Documents



Product Drawings

13POS, MIXED,TAB HSG,ASSY,CODA

English

CAD Files

3D PDF

3D

Customer View Model

ENG_CVM_CVM_2141647-1_A.2d_dxf.zip

English

Customer View Model

ENG_CVM_CVM_2141647-1_A.3d_igs.zip

English

Customer View Model

ENG_CVM_CVM_2141647-1_A.3d_stp.zip

English

By downloading the CAD file I accept and agree to the [Terms and Conditions](#) of use.

Product Specifications

Application Specification

English