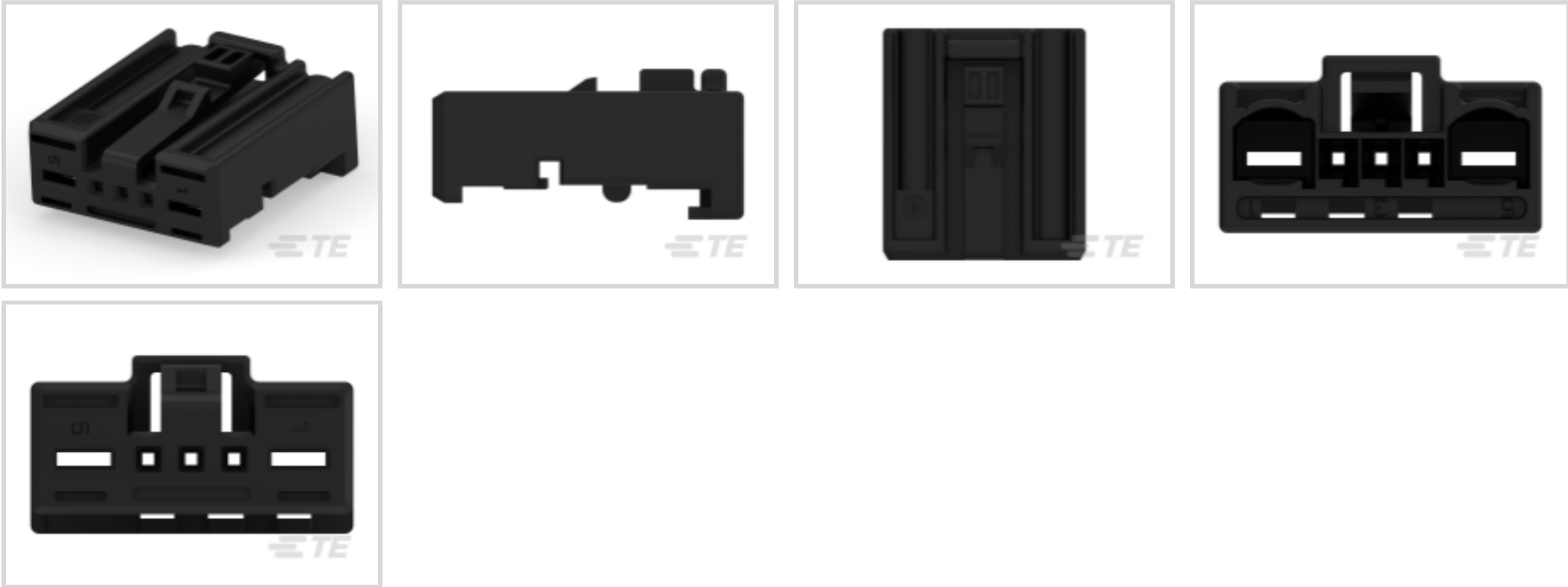




Automotive Parts > Automotive Connectors > Automotive Housings > MQS, CONNECTOR HOUSING



Connector & Housing Type: **Housing for Female Terminals**

Number of Positions: **5**

Sealable: **No**

Operating Temperature Range: **-40 – 100 °C [-40 – 212 °F]**

Number of Rows: **1**

[All MQS, CONNECTOR HOUSING \(338\)](#)

Features

Product Type Features

Mixed & Hybrid Connector	Yes
Connector Shape	Rectangular
Connector & Housing Type	Housing for Female Terminals
Sealable	No
Primary Locking Feature	On the Terminal
Connector System	Wire-to-Board, Wire-to-Wire
Connector & Contact Terminates To	Wire & Cable

Configuration Features

Number of Positions	5
Number of Rows	1

Electrical Characteristics

Nominal Voltage Architecture	12 V
------------------------------	------

Body Features



Cable Exit Angle	180°
Primary Product Color	Black
Connector & Keying Code	Z

Contact Features

Contact Size	.63mm, 2.8mm
Contact Type	Receptacle
Mating Tab Width	.63 mm, 2.8 mm[.025 in][.11 in]
Contact Current Rating (Max)	7.5 A, 27 A

Mechanical Attachment

Strain Relief	Without
Terminal Position Assurance	No
Mating Alignment Type	Keyed
Mating Alignment	With
Connector Mounting Type	Cable Mount (Free-Hanging)

Housing Features

Housing Material	PBT GF15
Centerline (Pitch)	2.54 mm, 12.7 mm[.1 in][.5 in]

Dimensions

Product Width	21.8 mm[.86 in]
Product Length	19.1 mm[.75 in]
Connector Height	10.5 mm[.41 in]

Usage Conditions

Operating Temperature Range	-40 – 100 °C[-40 – 212 °F]
Operating Temperature (Max)	100 °C[212 °F]

Operation/Application

Circuit Application	Power & Signal
---------------------	----------------

Industry Standards

IP Rating	IP2B
UL Flammability Rating	UL 94HB

Packaging Features

Packaging Quantity	1
Packaging Method	Package



Other

Serviceable	Yes
Connector Position Assurance Capable	No

Product Compliance

For compliance documentation, visit the product page on TE.com>

EU RoHS Directive 2011/65/EU	Compliant
EU ELV Directive 2000/53/EC	Compliant
China RoHS 2 Directive MIIT Order No 32, 2016	No Restricted Materials Above Threshold
EU REACH Regulation (EC) No. 1907/2006	Current ECHA Candidate List: JAN 2025 (247) Candidate List Declared Against: JAN 2025 (247) Does not contain REACH SVHC
Halogen Content	Low Halogen - Br, Cl, F, I < 900 ppm per homogenous material. Also BFR/CFR/PVC Free
Solder Process Capability	Not applicable for solder process capability

Product Compliance Disclaimer

This information is provided based on reasonable inquiry of our suppliers and represents our current actual knowledge based on the information they provided. This information is subject to change. The part numbers that TE has identified as EU RoHS compliant have a maximum concentration of 0.1% by weight in homogenous materials for lead, hexavalent chromium, mercury, PBB, PBDE, DBP, BBP, DEHP, DIBP, and 0.01% for cadmium, or qualify for an exemption to these limits as defined in the Annexes of Directive 2011/65/EU (RoHS2). Finished electrical and electronic equipment products will be CE marked as required by Directive 2011/65/EU. Components may not be CE marked. Additionally, the part numbers that TE has identified as EU ELV compliant have a maximum concentration of 0.1% by weight in homogenous materials for lead, hexavalent chromium, and mercury, and 0.01% for cadmium, or qualify for an exemption to these limits as defined in the Annexes of Directive 2000/53/EC (ELV). Regarding the REACH Regulation, the information TE provides on SVHC in articles for this part number is based on the latest European Chemicals Agency (ECHA) 'Guidance on requirements for substances in articles' posted at this URL: <https://echa.europa.eu/guidance-documents/guidance-on-reach>

Compatible Parts



TE Part # 1379218-2
COVER FOR 5W MPQ+MQS HSG



TE Part # CAT-M8793-T273
MQS, RECEPTACLE AND TAB



Also in the Series | AMP 0.64 Connector System



Automotive Connector Caps & Covers (10)



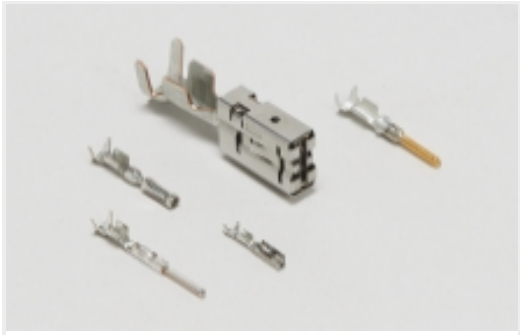
Automotive Housings(17)



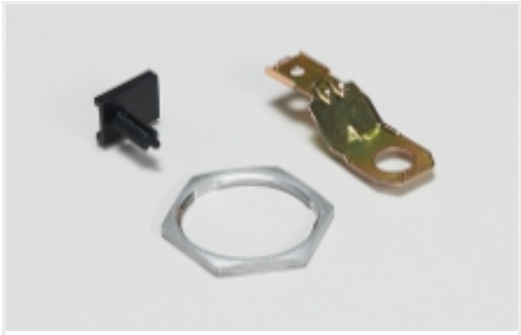
Automotive Signal & Power Connector Housings(17)



Automotive Signal & Power Headers(6)



Automotive Terminals(5)



Other Automotive Connector Accessories(1)

Customers Also Bought



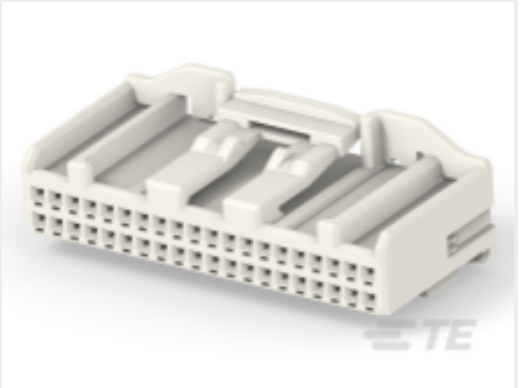
TE Part #CAT-T4827-CH8172
Timer Connector Housing



TE Part #2050036-4
64P ECU PLUG CONNECTOR



TE Part #2298672-1
20POS,HYBRID,TAB HSG ASSY, UNSLD,COD A



TE Part #2325415-1
40POS,ML .025,REC HSG ASSY,UNSLD



TE Part #2390416-1
TAB CONN CVR,36POS,AMP MCP 1.5 K



TE Part #2390421-1
36POS,AMP MCP 1.5K,REC HSG ASSY



TE Part #1743455-2
CLIP HSG FOR 090 MLC TYPE-3



TE Part #2293362-1
MQS ONE PIECE TAB WIRE 0.5~0.75 EMEA



TE Part #2298631-1
48POS,HYBRID,TAB HSG ASSY, UNSLD,COD A



Documents

Product Drawings

5POS MIXED MQS REC COD Z

English

CAD Files

3D PDF

English

Customer View Model

ENG_CVM_1438992-1_A.3d_igs.zip

English

Customer View Model

ENG_CVM_1438992-1_A.3d_stp.zip

English

Customer View Model

ENG_CVM_1438992-1_A.2d_dxf.zip

English

By downloading the CAD file I accept and agree to the [Terms and Conditions](#) of use.

Product Specifications

2 WAY MPQ + 3 WAY MQS SOCKET HOUSING

English

Product Specification

English