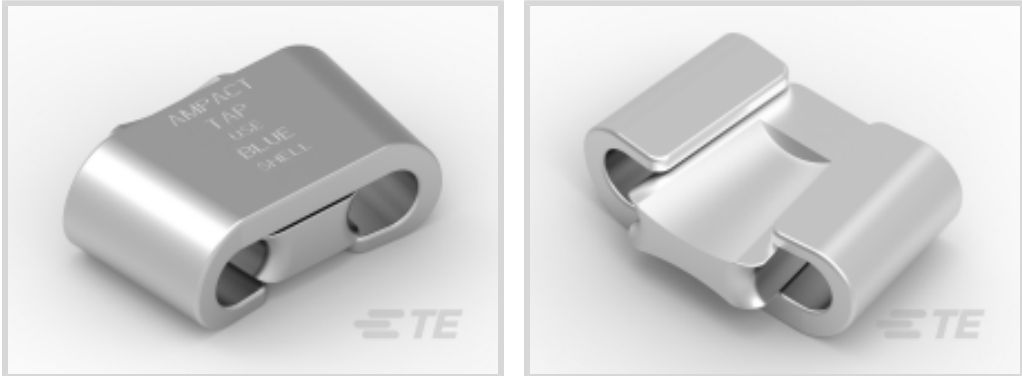




Energy & Power > Power Systems Connectors > Wedge Connectors > AMPACT Wedge Pressure Tap Connectors



Product Availability: **Americas**
Installation Technology: **Energised Installation, Wedge**
Voltage Class: **≤ 500 kV**

[All AMPACT Wedge Pressure Tap Connectors \(137\)](#)

Features

Product Type Features

Power Component Options	Hot Stick Accessories
Installation Technology	Energised Installation, Wedge

Configuration Features

Visual Inspection	Yes
-------------------	-----

Electrical Characteristics

Voltage Class	≤ 500 kV
---------------	----------

Body Features

Compatible Conductor Material	Aluminum, Copper
-------------------------------	------------------

Dimensions

Compatible Conductor Range - Tap	107 mm²[4/0 – 4/0 AWG/kcmil]
----------------------------------	------------------------------

Usage Conditions

Operating Temperature Range	0 – 175 °C[32 – 347 °F]
-----------------------------	-------------------------

Operation/Application

Power Component Application Type	Overhead
----------------------------------	----------

Product Availability

Product Availability	Americas
----------------------	----------

Other



Color Cartridge Required	Blue
--------------------------	------

Product Compliance

For compliance documentation, visit the product page on TE.com>

EU RoHS Directive 2011/65/EU	Compliant
EU ELV Directive 2000/53/EC	Compliant
China RoHS 2 Directive MIIT Order No 32, 2016	有害物质含量符合标准要求 No Restricted Substance(s) Above Threshold
EU REACH Regulation (EC) No. 1907/2006	Current ECHA Candidate List: JUNE 2025 (250) Candidate List Declared Against: JAN 2021 (211) Does not contain REACH SVHC
Halogen Content	Low Halogen - Br, Cl, F < 900 ppm per homogenous material. Also BFR/CFR/PVC Free
Solder Process Capability	Not applicable for solder process capability

Product Compliance Disclaimer

This information is provided based on reasonable inquiry of our suppliers and represents our current actual knowledge based on the information they provided. This information is subject to change. The part numbers that TE has identified as EU RoHS compliant have a maximum concentration of 0.1% by weight in homogenous materials for lead, hexavalent chromium, mercury, PBB, PBDE, DBP, BBP, DEHP, DIBP, and 0.01% for cadmium, or qualify for an exemption to these limits as defined in the Annexes of Directive 2011/65/EU (RoHS2). Finished electrical and electronic equipment products will be CE marked as required by Directive 2011/65/EU. Components may not be CE marked. Additionally, the part numbers that TE has identified as EU ELV compliant have a maximum concentration of 0.1% by weight in homogenous materials for lead, hexavalent chromium, and mercury, and 0.01% for cadmium, or qualify for an exemption to these limits as defined in the Annexes of Directive 2000/53/EC (ELV). Regarding the REACH Regulation, the information TE provides on SVHC in articles for this part number is based on the latest European Chemicals Agency (ECHA) 'Guidance on requirements for substances in articles' posted at this URL: <https://echa.europa.eu/guidance-documents/guidance-on-reach>

Compatible Parts



Also in the Series | AMPACT ALUMINUM TAP



Wedge Connectors(155)

Customers Also Bought



TE Part #C85326-000
BCAC-G-ARR-HOT-01(B12)



TE Part #CAT-BCIC-RAPC
Bird Guards For Power Lines



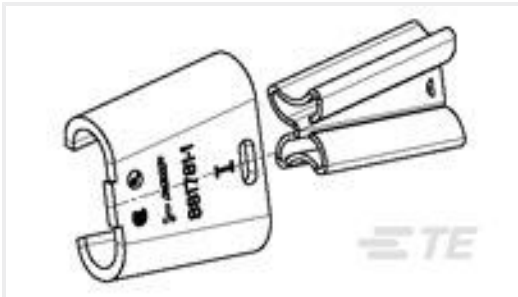
TE Part #830433-000
TFT-154E-SG



TE Part #69900
C & WEDGE HOLDER ASSY



TE Part #306347-1
AMPACT GEARED BREECH CAP ASSY



TE Part #881781-1
UDC TYPE I REINFORCED



TE Part #1443455-1
AMPACT HTT 795.0-795.0



TE Part #1443455-3
AMPACT HTT 795.0-636.0



TE Part #2-1393480-3
V23529B1121C225=SUB D STIFTLEI

Documents

Product Drawings
AMPACT TAP - BLUE SERIE
English

Datasheets & Catalog Pages
AMPACT ALUMINUM TAP CONNECTORS
English