

# BOARD CONNECTIVITY & SUBSYSTEMS (BCS) FOR CLIMATE SOLUTIONS



TE Connectivity (TE) is engineering the future of industrial and commercial Climate Solutions/HVAC systems with a robust portfolio of reliable, compact, and high-performance connectors. Explore some of TE's leading products for this application.



Don't see what you are looking for?  
**CONTACT US TODAY!**

## WTB WIRE-TO-BOARD CONNECTORS

### EUROSTYLE TERMINAL BLOCKS

Terminal Blocks portfolio offers various wire terminations like screw and push-in clamps, with one-piece or two-piece plug connector designs. Features include modular housings with interlocks, high-temp resin headers for reflow soldering, and optional pre-assembled units.

	Eurostyle Terminal Blocks Vertical, SR, Plug <a href="#">284047-8</a>	5.08 Pitch (mm)	2-25 Available Positions
	Eurostyle Terminal Blocks Vertical, SR, Header <a href="#">796636-8</a>	5.08 Pitch (mm)	2-25 Available Positions
	Eurostyle Terminal Blocks Right Angle, SR, Header with flange <a href="#">1-796866-8</a>	5.08 Pitch (mm)	2-23 Available Positions

	Eurostyle Terminal Blocks Right Angle, SR, Plug <a href="#">796634-8</a>	5.08 Pitch (mm)	2-25 Available Positions
	Eurostyle Terminal Blocks (push in) Vertical, DR, Header <a href="#">1-2842489-0</a>	3.5 Pitch (mm)	2-24 Available Positions
	Eurostyle Terminal Blocks (push in) Vertical, DR, Plug <a href="#">1-2842487-0</a>	3.5 Pitch (mm)	2-24 Available Positions



## WIRE-TO-BOARD CONNECTORS (CONTINUED)

### DYNAMIC ULTRA

The Dynamic Ultra connector series is engineered as a miniature wire-to-board interconnection system. Its multiple contact points provide reliable performance even in demanding environments as seen in Climate Control Systems.



Dynamic Ultra Header Right Angle SMT (6P), SR [2834659-6](#)

1.8 Pitch (mm)

2-10 Available Positions



Dynamic Ultra Socket Receptacle Housing (6P), SR [2834663-6](#)

1.8 Pitch (mm)

2-10 Available Positions

### ERNI MAXIBRIDGE

The ERNI MaxiBridge connector system is a single- and double-row wire to board connector system with a pitch of 2.54 millimeters and a high-current rating of up to 12 A per contact. It is excellent for space-saving and highly stressed connections.



ERNI MaxiBridge Header Vertical SMT (4P), SR [384462-E](#)

2.54 Pitch (mm)

2-20 Available Positions



ERNI MaxiBridge Socket Receptacle Housing (4P), SR [384453-E](#)

2.54 Pitch (mm)

2-20 Available Positions



## WIRE-TO-WIRE AND WIRE-TO-PANEL CONNECTORS

### DYNAMIC 2000 AND 3000 SERIES

The Dynamic 2000/3000 series combine options for both signal and power in a compact connector solution. The long contact wipe length, innovative multi-point contact system, and secure locking features make it an ideal solution for high reliability connections.



Dynamic D3200 Socket Receptacle Housing (4P), SR [1-178128-4](#)

5.08 Pitch (mm)

2-10 Available Positions



Dynamic D3200 Panel Mount Tab Housing (4P), SR [1-179553-4](#)

5.08 Pitch (mm)

2-10 Available Positions



Dynamic D-3 REC CONT. L AU 0.38 [175196-2](#)



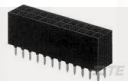
Dynamic D-3 TAB CONT. L AU 0.38 [175286-2](#)



## BOARD-TO-BOARD CONNECTORS

### AMPMODU HEADERS AND RECEPTACLES

AMPMODU headers and receptacles offer durable and reliable 2.54 x 2.54 mm centerline configurations, with headers using .025" square posts and receptacles supporting 32-20 AWG wires in a crimp termination style.



AMPMODU MOD II Receptacle Vertical, DR [5-534236-6](#)

2.54 Pitch (mm)

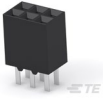
2-80 Available Positions



AMPMODU Shrouded and Unshrouded Headers Vertical, DR [5-146252-6](#)

2.54 Pitch (mm)

2-80 Available Positions



AMPMODU MOD II Receptacle Vertical, SR [5-534206-3](#)

2.54 Pitch (mm)

2-80 Available Positions



AMPMODU MOD II Receptacle Vertical, SR [5-534237-8](#)

2.54 Pitch (mm)

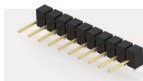
3-40 Available Positions



AMPMODU Shrouded and Unshrouded Headers SMT, DR [5-146130-2](#)

2.54 Pitch (mm)

4-30 Available Positions



AMPMODU Shrouded and Unshrouded Headers Right Angle, SR [6-146304-0](#)

2.54 Pitch (mm)

2-40 Available Positions



AMPMODU Shrouded and Unshrouded Headers Vertical, DR [5-146253-3](#)

2.54 Pitch (mm)

2-80 Available Positions



Socket Contact, Gold [104479-4](#)



AMPMODU Shrouded and Unshrouded Headers Right Angle, DR [102617-1](#)

2.54 Pitch (mm)

6-60 Available Positions



Socket Contact, Tin [87309-8](#)



AMPMODU Shrouded and Unshrouded Headers SMT, DR [5-146130-5](#)

2.54 Pitch (mm)

4-30 Available Positions

SR - Single Row | DR - Double Row

### AMPMODU SYSTEM 50

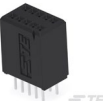
AMPMODU System 50 connectors are high-density board-to-board (thru-hole and surface-mount) and wire-to-board connectors, composed of one- and two-row receptacles and headers with a 1.27 mm x 2.54 mm pitch.



SYSTEM 50 HDR DRST SHRD (10P) Header [5-104068-2](#)

1.27 Pitch (mm)

6-100 Available Positions



SYSTEM 50 RCPT ASSY DRST SN (10P) Receptacle [5-104078-3](#)

1.27 Pitch (mm)

6-100 Available Positions

[te.com](http://te.com)

TE, TE Connectivity, TE connectivity (logo), ERNI and EVERY CONNECTION COUNTS are trademarks owned or licensed by the TE Connectivity Ltd. family of companies. Other product names, logos, and company names mentioned herein may be trademarks of their respective owners.

While TE has made every reasonable effort to ensure the accuracy of the information in this document, TE reserves the right to make any changes to the information contained herein without prior notice. Information contained herein are for reference purposes only and TE expressly disclaims any implied warranties with respect to the information contained herein, including, but not limited to, implied warranties of merchantability or fitness for a particular purpose. TE assumes only those obligations set forth in the terms and conditions for this product and shall in no event be liable for any incidental, indirect, or consequential damages arising out of the sale, resale, use, or misapplication of the product. Consult TE for the latest dimensions and design specifications.

©2025 TE Connectivity. All Rights Reserved.

