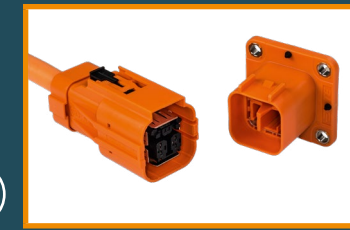
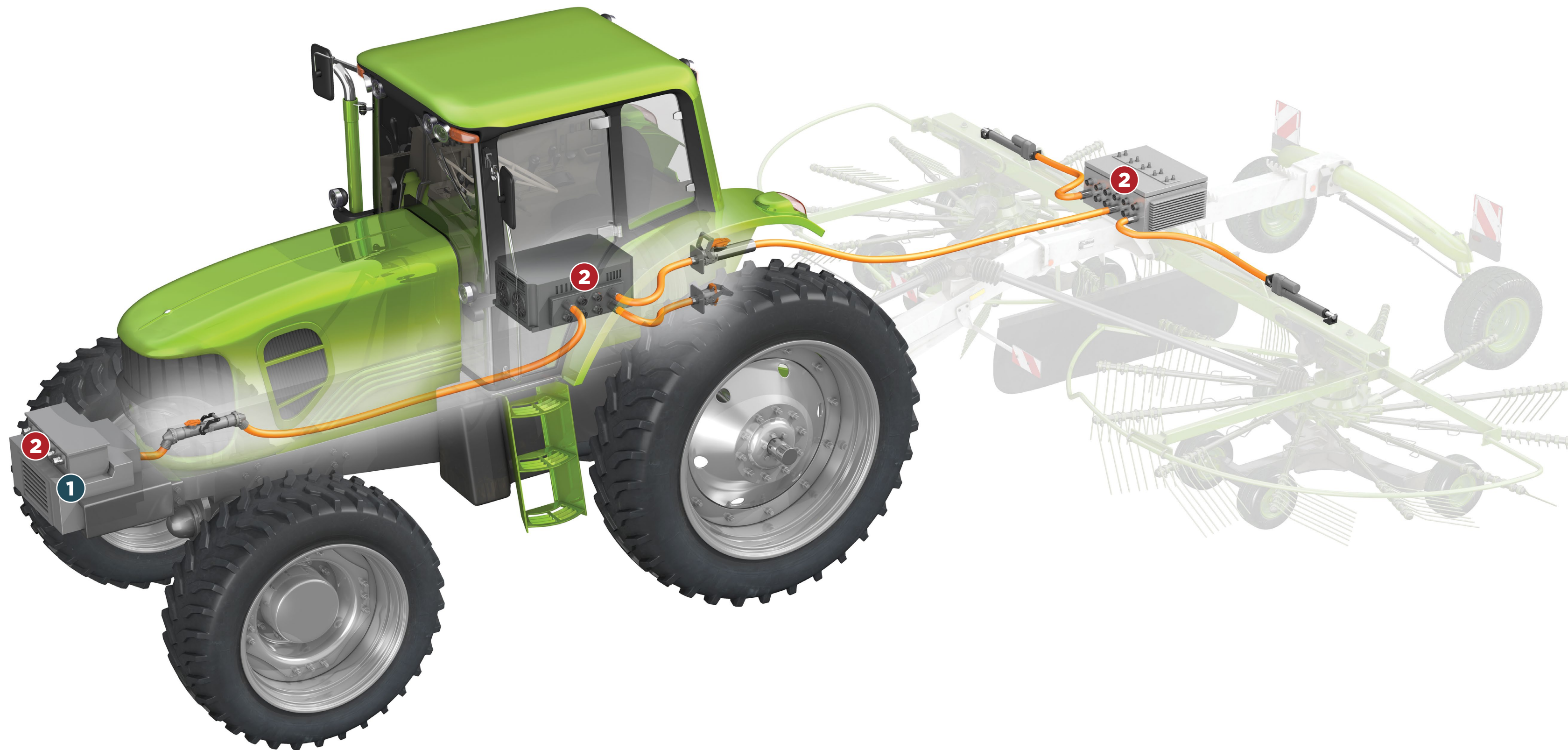


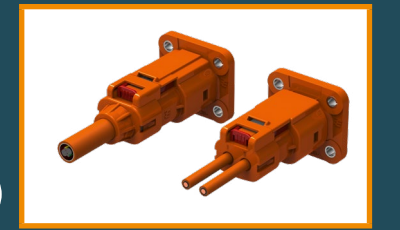
TRACTOR

- CHARGING
- LOW-MEDIUM CURRENT - HIGH VOLTAGE ACCESSORIES
- HIGH CURRENT - POWER COMPONENTS



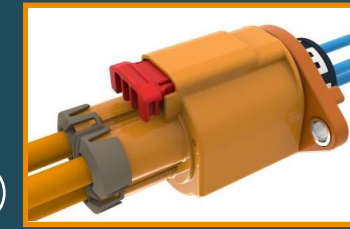
1

AMP+ HVA 630
 • 850V DC, 40A at +140°C



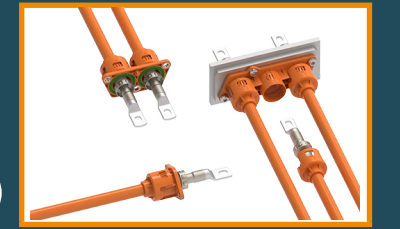
1

AMP+ HVA 280
 • High diversity (2P & 3P, multiple latching options, inline)
 • Up to 600V individually shielded wire and 850V multi-core wire
 • 40A at +85°C



1

HVA HD400
 • Compact, rugged design offering transmission-level vibration performance (LV-S3)
 • 1000 VDC, 60 A (at 80°C), operating temperature of -40°C to +140°C



2

IPT-HD
 • Enhanced shielding design offering engine-level vibration performance
 • Operating temperature of -40°C to +125°C
 • Flexible assembly with single wiring harness