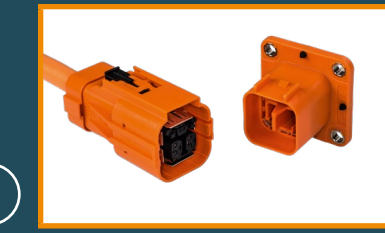
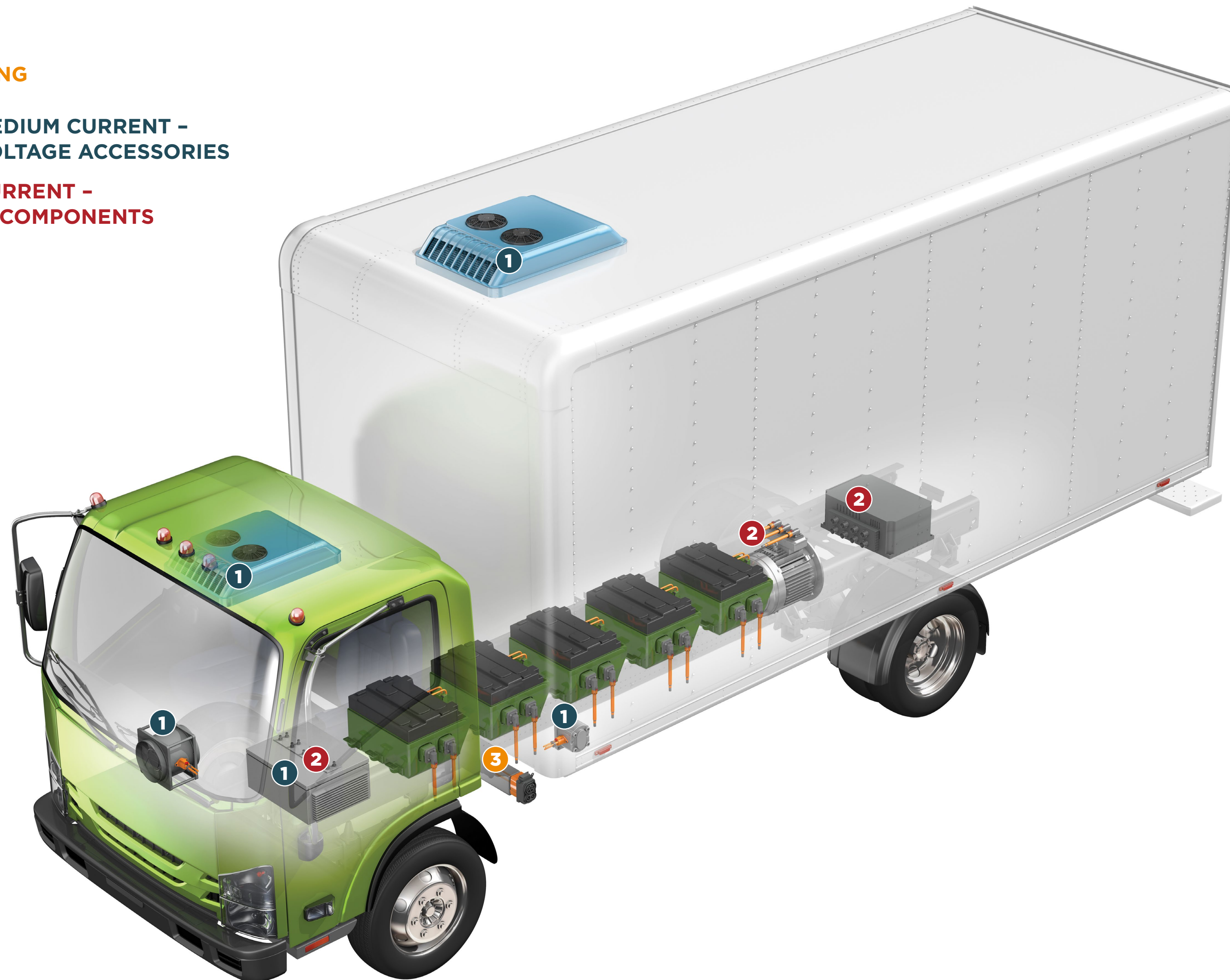
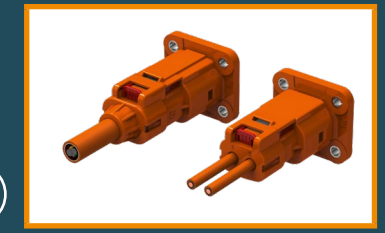


# MEDIUM DUTY TRUCK

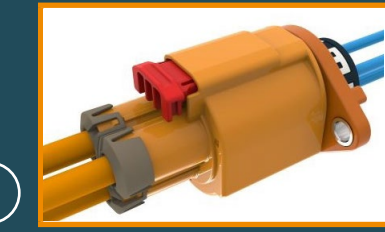
- CHARGING
- LOW-MEDIUM CURRENT - HIGH VOLTAGE ACCESSORIES
- HIGH CURRENT - POWER COMPONENTS



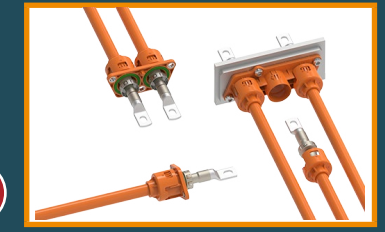
**1** AMP+ HVA 630  
• 850V DC, 40A at +140°C



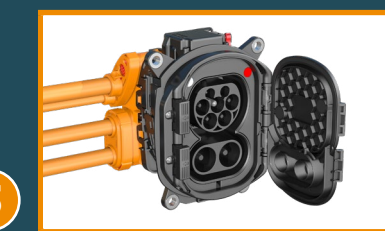
**1** AMP+ HVA 280  
• High diversity (2P & 3P, multiple latching options, inline)  
• Up to 600V individually shielded wire and 850V multi-core wire  
• 40A at +85°C



**1** HVA HD400  
• Compact, rugged design offering transmission-level vibration performance (LV-S3)  
• 1000 VDC, 60 A (at 80°C), operating temperature of -40°C to +140°C



**2** IPT-HD  
• Enhanced shielding design offering engine-level vibration performance  
• Operating temperature of -40°C to +125°C  
• Flexible assembly with single wiring harness



**3** Charging Inlet  
• Available in kits and pigtails  
• IP67 rating, 250 VAC (at 32 A), and 1000 VDC (at 200 A)  
• Upgraded conductor sizes for fast charging - DC 70 mm<sup>2</sup> / PE 25 mm<sup>2</sup> / AC 6 mm<sup>2</sup>