



## EV POWER AND CHARGING SOLUTIONS

---

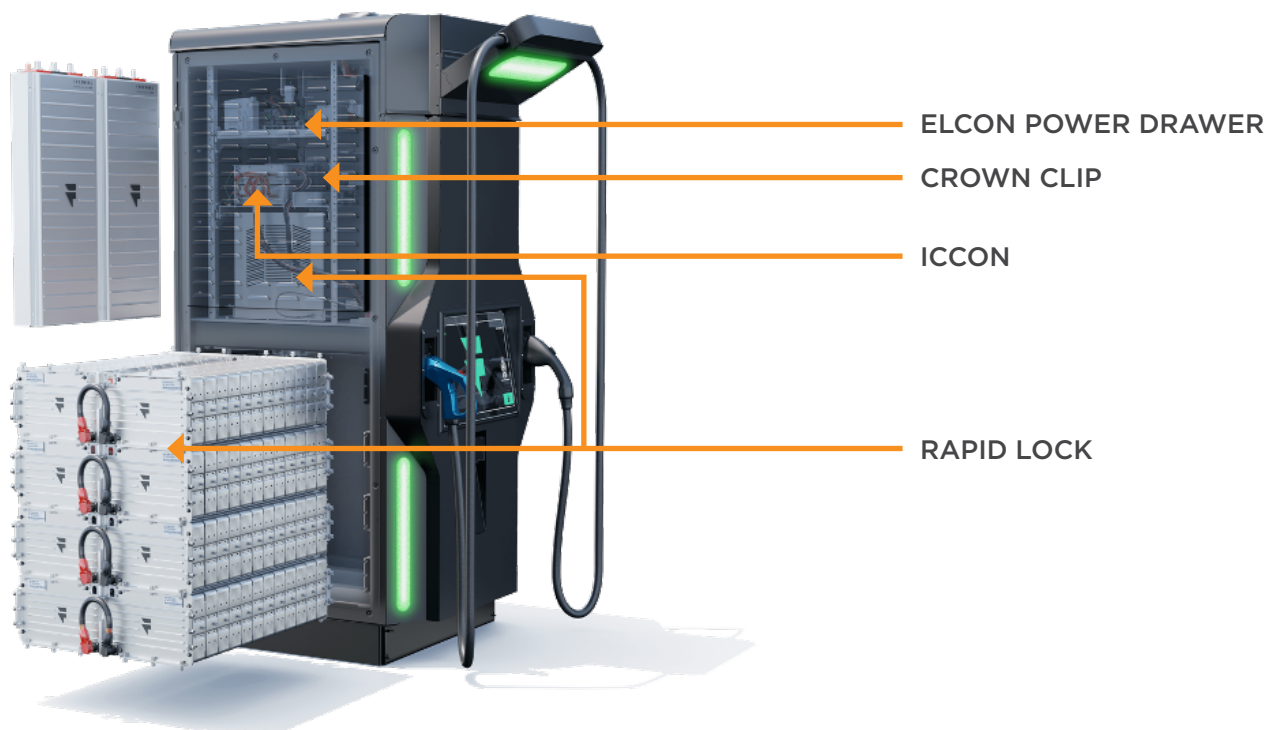
Vehicle electrification is gathering steam within the current environment as automakers and governments drive the electric vehicle (EV) industry forward world-wide. The benefits of electrification are profound and numerous, creating a sustainable mode of transportation that helps to reduce the use of non-renewable energy and reduce carbon emissions. With increased focus to support the building of a robust charging infrastructure, TE Connectivity (TE) is on the forefront of developing solutions for this vital infrastructure need.

---

---

## Advantages of TE Power Solutions

- **Complete Turn-Key:** Busbars, connectors and cables
- **Full Development Capability:** Design, simulation, test & manufacturing
- **Global Presence with Regional Support:** Customer support teams in North America, Europe, and Asia/Pacific
- **Quick Response:** Short lead time quotation and sample building





## CROWN Clip Busbar Connector Portfolio

Busbars and busbar connectors are an efficient method of distributing power in a system, transmitting high current power from source to load.



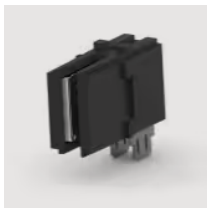
### Key Benefits

- Blind mate-able and floating capability permits mating even if the busbar is slightly misaligned and offers anti-overstress protection for the contact increasing reliability
- High energy density and lower power consumption design replacement the nuts-and-bolts previously used to transfer power from the source to the busbar, simplifying power distribution for products that need to meet high voltage requirements
- Offers a low resistance contact resulting in lower millivolt drop, allowing for efficient power distribution



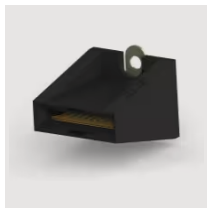
[2204866-1](#)

RACK 500A(250+250-)  
ORV2 Output Conn



[2178410-1](#)

CROWN CLIP  
JUNIOR CONN



[1643906-1](#)

Crown Clip Senior  
538-17-00100 399-01 7



[1982995-1](#)

CROWN CLIP JUNIOR  
SCREW-MOUNT CONN



[2204273-1](#)

IN-LINE MOUNT 500A  
BUSBAR CONN.



## RAPID LOCK Portfolio

The RAPID LOCK connector is a single-pole, quick connect and disconnect replacement for lug connections.



### Key Benefits

- New push button release feature provides an audible “click” to indicate mating. Does not require tools to install or remove cable assembly. Quick disconnect, with safety locking feature
- Increased power in smaller form factors. Currents ranging from 50A to 250A
- Customizable sizing options and designs for customer requirements. Industry standard crimp tooling. Available with blue, red, and black color insulators for color coding



[6648224-1](#)

PIN CONTACT#4,  
SCREW MT, PRESS FIT



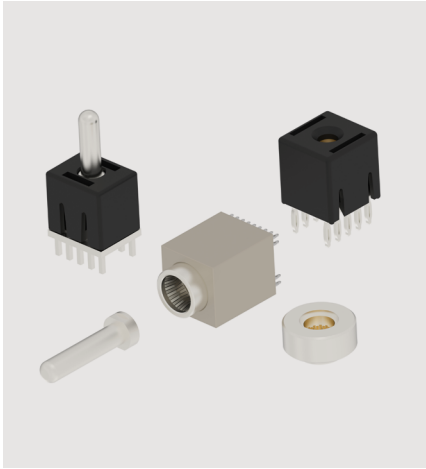
[6648236-1](#)

CROWN,SKT,#4 W/#4  
CRIMP,RAPID



[6648235-1](#)

CROWN,SKT,#4



## ICCON Portfolio

ICCON Block and ICCON Insert high power pin and socket products can offer flexible design options for applications up to 350A.



### Key Benefits

- Various mounting types are available to support different assembly processes and application environments (PCB or busbar): surface mount (SMT), press fit, knurl and screw
- Standard pin size options available (3.6mm, 6mm, 8mm and 10.3mm) to cover a broad range of current from 30A to 350A
- Different lengths of power pins enable customizable stack height options
- Products are high power and can reach up to 350A



[2361493-1](#)

ICCON INSERT SIZE  
8.0mm PIN



[2358714-1](#)

ICCON BLOCK SIZE  
10.3mm PIN



## ELCON Power Drawer

ELCON drawer interconnects are proven high-power drawer connectors that offer ultimate customization for wire-to-wire, wire-to-board, and wire-to-busbar configurations at up to 200A per contact. Our extensive portfolio features different housing and contact options to mix-and-match to create the right solution for virtually any power drawer need.



### Key Benefits

- True hot-plug, blind-mate connectors
- AC/DC, power and signal
- Wire-to-wire, wire-to-board and wire-to-busbar configurations
- Utilize high-performance CROWN BAND contacts
- 35A to 200A per power contact



[6651810-1](#)

294-001-01100  
=S A CONN, SKT



[6766615-1](#)

293-0091-01100-  
HSG ASSY W/  
CLIPS

---

## te.com

TE Connectivity, TE, TE connectivity (logo), RAPID LOCK, CROWN CLIP, ELCON, CROWN BAND and ICCONN are trademarks owned or licensed by the TE Connectivity Ltd. family of companies. Other logos, products and/or company names might be trademarks of their respective owners.

The information given herein, including drawings, illustrations and schematics which are intended for illustration purposes only, is believed to be reliable. However, TE Connectivity makes no warranties as to its accuracy or completeness and disclaims any liability in connection with its use. TE Connectivity's obligations shall only be as set forth in TE Connectivity's Standard Terms and Conditions of Sale for this product and in no case will TE Connectivity be liable for any incidental, indirect or consequential damages arising out of the sale, resale, use or misuse of the product. Users of TE Connectivity products should make their own evaluation to determine the suitability of each such product for the specific application.

©2023 TE Connectivity. All Rights Reserved.

07/23 Original