

MODULAR JACKS AND MRJ21 PRODUCTS

Single Port PCB Mount

Quick Reference Guide

MODULAR JACKS AND MRJ21 PRODUCTS - SINGLE PORT PCB MOUNT

TE Connectivity's (TE) comprehensive single port modular jack product portfolio has been designed to meet the diverse design requirements of the data communications market. The product portfolio, which includes right angle jacks, 45 degree angle jacks and vertical jacks, specifically suits applications that require performance in voice, data, and high-speed networking.

Available in a variety of styles and configurations, TE's single port modular jacks offer compact size, and meet FCC rules and regulations part 68 as supported by Telecommunications Industry Association (TIA-1096-A).

Product Applications

- Communications
 - Telephones
 - Routers
 - Servers
 - Switches
- Computers
- Business equipment
- Consumer electronics
- Wireless base stations

Features and Benefits

- Standardization for network connections
- Ease of use
- Broad portfolio
- RoHS compliant

BASIC INFORMATION

RJ Designation

Modular jacks are commonly misrepresented by the Registered Jack (RJ) designations shown below. TE modular jacks should be selected by position size and number of contacts loaded.

RJ45 Designation	Position/Contacts Loaded
RJ11	6/2
RJ14	6/4
RJ22	4/4
RJ25	6/6
RJ45	8/8
MRJ21	48/48

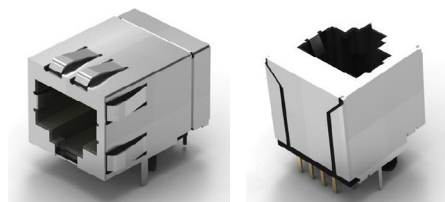
Performance Category

Category	Applications
Cat 3	10 BASE-T
Cat 5	10/100 BASE-T
Cat 5e	10/100/1000 BASE-T or Gigabit Ethernet
Cat 6a	10 Gigabit Ethernet

Product Features

Shielded

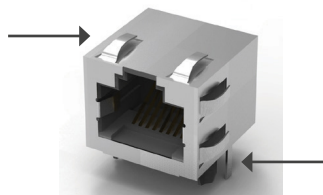
A metal shell that provides EMI/RFI* protection. EMI/RFI is unwanted electromagnetic energy (or “noise”) in the frequency range that is generally used in radio communication.



Grounding Options

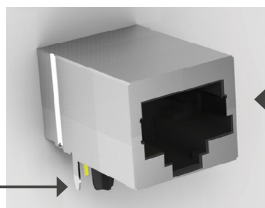
Panel Ground — Makes contact with the panel for ground connections.

PCB Ground — Makes contact with the PCB for ground connections.



Keyed

Designed for the use with a keyed plug to ensure proper mating and will also accept a standard plug



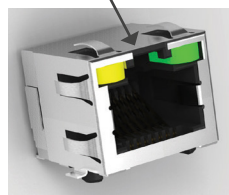
Mounting Pegs

Provide location and retention support during soldering processes, but do not function as boardlocks. The majority of modular jacks have some type of mounting peg.

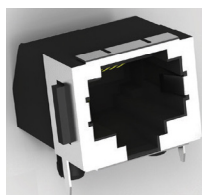
Inverted

Contacts are on the bottom and the latch is on the top to allow for alternate location of latch.

Inverted Latch Tab Up

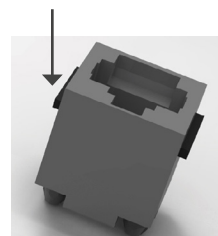


Standard Latch Tab Down



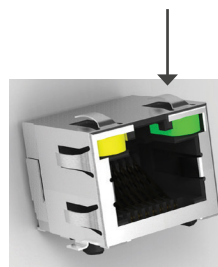
Panel Stops

Provides additional mechanical support, especially with top entry jacks.



LEDs

Integrated into the modular jack, eliminating the need for additional system space for indicators. Available in multiple colors and configurations.

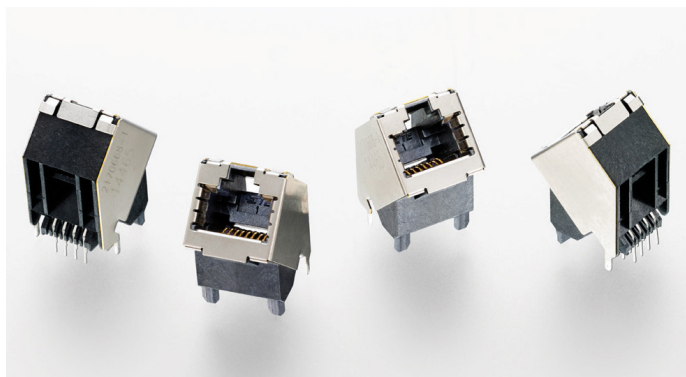


*Terminology Key

EMI — Electro Magnetic Interference

RFI — Radio Frequency Interference

45 DEGREE ANGLE JACKS



The addition to TE's single port modular jack portfolio is the angled RJ45 connector for Cat 6 applications which provides increased data rates, reduced signal interference and easier connections with a 45 degree angle design.

Features

- Cat 6 performance rating
- >1Gbps transmission independent of Integrated Circuit Module (ICM)
- Shielded
- Grounding and panel features

Achieve Faster Data Rates

- Exceeds data rates of 1 Gbps, meeting the requirements for Cat 6 applications.
- Expands the possibilities for broader bandwidth Ethernet connections.

Reduce Signal Interference

- Features up to 4x the number of EMI springs in the shield design than other RJ45 connectors on the market.
- Improves EMI shielding effectiveness and helps prevent external interference to the transmission signal as well as reduce interference to external devices.

Increase Ease of Assembly

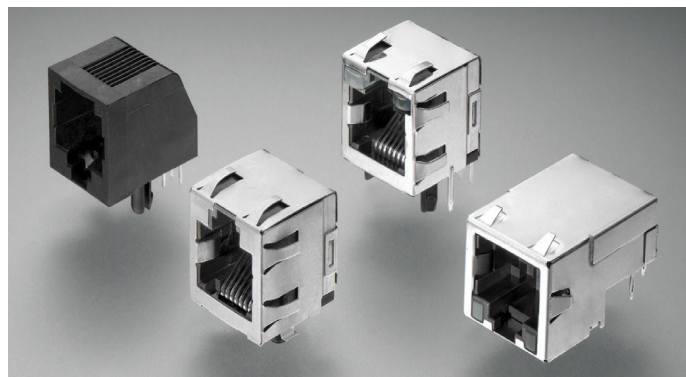
- 45 degree angle entry jack design allows for easy, efficient cable connections
- Provides a connector surface that is more visible and accessible than right angle or vertical jacks in small or hard-to-reach spaces

Decrease PCB Assembly Costs

- Supports cost-effective IR reflow soldering processes with high temperature, liquid crystal polymer (LCP) material.
- Increases assembly efficiency with a single soldering process for through hole and SMT connections.

8 positions/ 8 contacts											
Part number	Type	Profile	Height (mm)	Mount style	Mating entry	LEDs	Shielded	Performance	Panel stops	Inverted	Grounding options
2170668-1	RJ45	Standard	25.8	Thru-hole	Side	Without	Yes	Cat 6	Without	Yes	PCB and panel

RIGHT ANGLE JACKS



TE' extensive product offering provides a broad selection of right angle modular jacks.

Features

- Cat 3, Cat 5, Cat 5e performance ratings
- Low-profile, through-hole, or SMT
- With and without shielding
- With and without LEDs
- Grounding and panel features

4 positions/ 4 contacts											
Part number	Type	Profile	Height (mm)	Mount style	Mating entry	LEDs	Shielded	Performance	Panel stops	Inverted	Grounding options
1-1705949-1	RJ22	Low	11.5	Thru-hole	Side	Without	No	Cat 3	Panel stops	No	Without
215875-1	RJ22	Low	11.5	Thru-hole	Side	Without	No	Cat 3	Without	No	Without
5520249-2	RJ22	Low	16.2	Thru-hole	Side	Without	No	Cat 3	Panel stops	No	Without
5555980-1	RJ22	Low	16.2	Thru-hole	Side	Without	No	Cat 3	Without	No	Without

6 positions/ 2 contacts											
Part number	Type	Profile	Height (mm)	Mount style	Mating entry	Leds	Shielded	Performance	Panel stops	Inverted	Grounding options
5555163-5	RJ11	Low	12.7	Thru-hole	Side	Without	No	Cat 3	Panel Stops	No	Without
5555165-5	RJ11	Low	12.7	Thru-hole	Side	Without	No	Cat 3	Without	No	Without

6 positions/ 4 contacts											
Part number	Type	Profile	Height (mm)	Mount style	Mating entry	Leds	Shielded	Performance	Panel stops	Inverted	Grounding options
215876-2	RJ14	Low	11.5	Thru-hole	Side	Without	No	Cat 3	Without	No	Without
5406545-1	RJ14	Low	12.4	SMT	Side	Without	No	Cat 3	With	Yes	Without
5520250-2	RJ14	Low	16.13	Thru-hole	Side	Without	No	Cat 3	With	No	Without
5555077-2	RJ14	Low	12.7	SMT	Side	Without	No	Cat 3	With	No	Without
5555140-2	RJ14	Low	12.7	Thru-hole	Side	Without	Yes	Cat 3	With	No	Without
5555154-2	RJ14	Low	12.7	Thru-hole	Side	Without	Yes	Cat 3	With	No	Without
5555163-2	RJ14	Low	12.57	Thru-hole	Side	Without	No	Cat 3	With	No	Without
5555165-2	RJ14	Low	12.7	Thru-hole	Side	Without	No	Cat 3	Without	No	Without
5555979-1	RJ14	Low	16.13	Thru-hole	Side	Without	No	Cat 3	Without	No	Without
5557314-2	RJ14	Low	12.7	SMT	Side	Without	No	Cat 3	Without	No	Without

6 positions/ 6 contacts											
Part number	Type	Profile	Height (mm)	Mount style	Mating entry	Leds	Shielded	Performance	Panel stops	Inverted	Grounding options
1-1705950-1	RJ25	Standard	11.5	Thru-hole	Side	Without	No	Cat 3	Without	No	Without

RIGHT ANGLE JACKS (CONTINUED)

6 positions/ 6 contacts											
Part number	Type	Profile	Height (mm)	Mount style	Mating entry	Leds	Shielded	Performance	Panel stops	Inverted	Grounding options
1-1705950-2	RJ14	Standard	11.5	Thru-hole	Side	Without	No	Cat 3	With	No	Without
1-215876-3	RJ25	Low	11.5	Thru-hole	Side	Without	No	Cat 3	Without	No	Without
1705950-1	RJ25	Standard	11.5	Thru-hole	Side	Without	No	Cat 3	Without	No	Without
1734723-1	RJ25	Standard	11.05	Thru-hole	Side	Without	Yes	Cat 3	Without	No	PCB
1734723-6	RJ25	Standard	11.05	Thru-hole	Side	Without	Yes	Cat 3	Without	No	PCB
1775445-1	RJ25	Low	14.5	Thru-hole	Side	Without	No	Cat 3	Without	Yes	Without
215876-1	RJ25	Low	11.5	Thru-hole	Side	Without	No	Cat 3	Without	No	Without
5406435-1	RJ25	Low	12.57	Thru-hole	Side	Without	Yes	Cat 3	With	No	PCB
5406514-1	RJ25	Low	12.95	SMT	Side	Without	No	Cat 3	Without	Yes	Without
5406514-2	RJ25	Low	12.95	SMT	Side	Without	No	Cat 3	Without	Yes	Without
5406514-3	RJ45	Standard	12.4	SMT	Side	Without	Yes	Cat 3	Without	Yes	PCB and panel
5520250-3	RJ25	Standard	16.13	Thru-hole	Side	Without	No	Cat 3	With	No	Without
5520470-3	RJ25	Standard	16.13	Thru-hole	Side	Without	No	Cat 3	Without	No	Without
5555003-1	RJ25	Standard	16.13	Thru-hole	Side	Without	No	Cat 3	With	No	Without
5555077-1	RJ25	Low	12.7	SMT	Side	Without	No	Cat 3	With	No	Without
5555140-1	RJ25	Low	12.7	Thru-hole	Side	Without	Yes	Cat 3	With	No	PCB and panel
5555140-4	RJ25	Low	12.7	Thru-hole	Side	Without	Yes	Cat 3	With	No	PCB and panel
5555140-6	RJ25	Low	12.7	Thru-hole	Side	Without	Yes	Cat 3	With	No	PCB and panel
5555154-1	RJ25	Low	12.57	Thru-hole	Side	Without	Yes	Cat 3	With	No	PCB
5555154-4	RJ25	Low	12.57	Thru-hole	Side	Without	Yes	Cat 3	With	No	PCB
5555163-1	RJ25	Low	12.57	Thru-hole	Side	Without	No	Cat 3	With	No	Without
5555165-1	RJ25	Low	12.7	Thru-hole	Side	Without	No	Cat 3	Without	No	Without
5557314-1	RJ25	Low	12.7	SMT	Side	Without	No	Cat 3	Without	No	Without
5569026-1	RJ25	Low	12.7	Thru-hole	Side	Without	No	Cat 3	Without	No	Without
5569984-2	RJ11	Standard	16.5	Thru-hole	Top	Without	No	Cat 3	Without	No	Without

8 positions/ 6 contacts											
Part number	Type	Profile	Height (mm)	Mount style	Mating entry	Leds	Shielded	Performance	Panel stops	Inverted	Grounding options
5558342-1	RJ45	Low	13.64	Thru-hole	Side	Without	Yes	Cat 5e	Without	No	PCB

8 positions/ 8 contacts											
Part number	Type	Profile	Height (mm)	Mount style	Mating entry	Leds	Shielded	Performance	Panel stops	Inverted	Grounding options
5569564-1	RJ45	Low	13.64	Thru-hole	Side	With	Yes	Cat 3	Without	No	Panel & PCB
5406533-1	RJ45	Standard	12.83	Thru-hole	Side	With	No	Cat 5	Without	Yes	Without
1-406525-1	RJ45	Standard	12.83	Thru-hole	Side	Without	No	Cat 5	Without	Yes	Without

RIGHT ANGLE JACKS (CONTINUED)

8 positions/ 8 contacts											
Part number	Type	Profile	Height (mm)	Mount style	Mating entry	Leds	Shielded	Performance	Panel stops	Inverted	Grounding options
1-406541-1	RJ45	Standard	13.34	Thru-hole	Side	Without	Yes	Cat 5	Without	Yes	Panel & PCB
1-406541-5	RJ45	Standard	13.34	Thru-hole	Side	Without	Yes	Cat 5	Without	Yes	PCB
6364288-1	RJ45	Standard	13.34	Thru-hole	Side	Without	Yes	Cat 5	Without	Yes	Panel & PCB
1888566-1	RJ45	Standard	13.34	Thru-hole	Side	With	Yes	Cat 5	Without	Yes	Panel & PCB
2-406549-1	RJ45	Standard	13.34	Thru-hole	Side	With	Yes	Cat 5	Without	Yes	Panel & PCB
106066-2	RJ45	Low	12.05	Thru-hole	Side	Without	Yes	Cat 3	Without	No	PCB and panel
1116062-2	RJ45	Low	9.58	Thru-hole	Side	Without	Yes	Cat 5	Without	No	PCB and panel
1116503-2	RJ45	Low	9.58	Thru-hole	Side	Without	Yes	Cat 5	Without	No	PCB
1116504-2	RJ45	Low	9.3	Thru-hole	Side	Without	No	Cat 5	Without	No	Without
1-1705951-1	RJ45	Standard	11.5	Thru-hole	Side	Without	No	Cat 3	Without	No	Without
1-1734264-1	RJ45	Low	13.2	Thru-hole	Side	Without	Yes	Cat 5	Without	No	PCB and panel
1-1734324-3	RJ45	Standard	11.3	Thru-hole	Side	With	Yes	Cat 3	Without	No	PCB
1-1734509-4	RJ45	Low	11.3	Thru-hole	Side	With	Yes	Cat 3	Without	No	PCB
1-1734579-4	RJ45	Low	11.05	Thru-hole	Side	Without	Yes	Cat 3	Without	No	PCB
1-1734795-1	RJ45	Standard	11.3	Thru-hole	Side	With	Yes	Cat 3	Without	Yes	PCB
1-1775365-4	RJ45	Standard	11.8	SMT	Side	Without	Yes	Cat 3	Without	No	PCB
1-215877-3	RJ45	Low	11.5	Thru-hole	Side	Without	No	Cat 3	Without	No	Without
1-5406299-1	RJ45	Standard	13.72	Thru-hole	Side	Without	Yes	Cat 5e	Without	No	PCB and panel
1-5406721-3	RJ45	Low	12.4	SMT	Side	Without	No	Cat 5	With	Yes	Without
1-5406721-4	RJ45	Low	12.4	SMT	Side	Without	No	Cat 5	With	Yes	Without
1705951-1	RJ45	Standard	11.5	Thru-hole	Side	Without	No	Cat 3	Without	No	Without
1734320-1	RJ45	Standard	13.64	Thru-hole	Side	With	Yes	Cat 3	Without	Yes	PCB and panel
1734324-3	RJ45	Standard	11.3	Thru-hole	Side	With	Yes	Cat 3	Without	No	PCB
1734719-1	RJ45	Offset	11.06	Thru-hole	Side	With	Yes	Cat 3	Without	Yes	PCB and panel
1734795-1	RJ45	Standard	11.3	Thru-hole	Side	Without	Yes	Cat 3	Without	Yes	PCB
1734795-4	RJ45	Standard	11.3	Thru-hole	Side	Without	Yes	Cat 3	Without	Yes	PCB
1734795-5	RJ45	Standard	11.3	Thru-hole	Side	Without	Yes	Cat 3	With	Yes	PCB and panel
1734795-6	RJ45	Standard	11.3	Thru-hole	Side	Without	Yes	Cat 3	With	Yes	PCB and panel
1734795-7	RJ45	Standard	11.3	Thru-hole	Side	Without	Yes	Cat 3	With	Yes	PCB and panel
1888068-1	RJ45	Standard	13.72	Thru-hole	Side	Without	Yes	Cat 5e	Without	No	PCB and panel
1888250-1	RJ45	Low	4.2	Press-fit	Side	With	Yes	Cat 5	Without	No	PCB and panel
1888250-2	RJ45	Low	4.2	Press-fit	Side	With	Yes	Cat 5	Without	No	PCB and panel
1888250-3	RJ45	Low	4.2	Press-fit	Side	Without	Yes	Cat 5	Without	No	PCB and panel
1888250-4	RJ45	Low	4.2	Press-fit	Side	With	Yes	Cat 5	Without	No	PCB and panel

RIGHT ANGLE JACKS (CONTINUED)

8 positions/ 8 contacts											
Part number	Type	Profile	Height (mm)	Mount style	Mating entry	Leds	Shielded	Performance	Panel stops	Inverted	Grounding options
1888542-2	RJ45	Standard	9.58	Thru-hole	Side	Without	Yes	Cat 5	With	No	PCB and panel
1888542-3	RJ45	Standard	9.58	Thru-hole	Side	Without	Yes	Cat 5	With	No	PCB and panel
1888543-2	RJ45	Standard	9.58	Thru-hole	Side	Without	Yes	Cat 5	Without	No	PCB
1955491-1	RJ45	Standard	13.35	Thru-hole	Side	Without	Yes	Cat 3	Without	Yes	PCB and panel
2041035-5	RJ45	Low	11.3	Thru-hole	Side	Without	Yes	Cat 3	Without	No	PCB and panel
2041126-1	RJ45	Offset	11.45	SMT	Side	Without	Yes	Cat 3	Without	No	PCB
2041307-1	RJ45	Offset	8.2	Thru-hole	Side	Without	Yes	Cat 3	Without	Yes	PCB and panel
2041411-1	RJ45	Offset	9.45	Thru-hole	Side	With	Yes	Cat 3	Without	Yes	PCB
215877-1	RJ45	Low	11.5	Thru-hole	Side	Without	No	Cat 3	Without	No	Without
216005-1	RJ45	Standard	22	SMT	Side	Without	No	Cat 3	Without	No	Without
216005-4	RJ45	Standard	22	SMT	Side	Without	No	Cat 3	Without	No	Without
2170136-1	RJ45	Standard	13	SMT	Side	Without	Yes	Cat 3	Without	No	PCB
2178415-1	RJ45	Standard	13.35	SMT	Side	Without	Yes	Cat 5	Without	Yes	PCB and panel
2-338556-1	RJ45	Low	12.1	Thru-hole	Side	Without	Yes	Cat 3	Without	No	PCB and panel
2-5338556-1	RJ45	Low	12.1	Thru-hole	Side	Without	Yes	Cat 3	Without	No	PCB and panel
2-6339191-1	RJ45	Standard	13.35	SMT	Side	With	Yes	Cat 5	Without	Yes	PCB and panel
3-1734795-1	RJ45	-	11.3	Thru-hole	Side	Without	Yes	Cat 3	Without	Yes	PCB
3-1734819-5	RJ45	Standard	11.06	Thru-hole	Side	With	Yes	Cat 3	Without	No	PCB
3-215877-1	RJ45	Low	11.5	Thru-hole	Side	Without	No	Cat 3	Without	No	Without
3-5338556-1	RJ45	Low	12.1	Thru-hole	Side	Without	Yes	Cat 3	Without	No	PCB and panel
406732-2	RJ45	Low	9.58	Thru-hole	Side	Without	Yes	Cat 5	Without	No	PCB
5-1734324-3	RJ45	Standard	11.3	Thru-hole	Side	With	Yes	Cat 3	With	No	PCB and panel
5-1734324-9	RJ45	Standard	11.3	Thru-hole	Side	With	Yes	Cat 3	With	No	PCB and panel
5406216-1	RJ45	Standard	13.72	Thru-hole	Side	Without	Yes	Cat 4	Without	No	PCB and panel
5406216-2	RJ45	Standard	13.72	Thru-hole	Side	Without	Yes	Cat 4	Without	No	PCB and panel
5406217-1	RJ45	Standard	13.72	Thru-hole	Side	Without	Yes	Cat 5e	Without	No	PCB and panel
5406295-1	RJ45	Standard	13.72	Thru-hole	Side	Without	Yes	Cat 4	Without	No	PCB and panel
5406296-1	RJ45	Standard	14.48	Thru-hole	Side	Without	Yes	Cat 5e	Without	No	PCB and panel
5406298-1	RJ45	Standard	13.72	Thru-hole	Side	Without	Yes	Cat 4	Without	No	PCB and panel
5406298-2	RJ45	Standard	13.72	Thru-hole	Side	Without	Yes	Cat 4	Without	No	PCB and panel
5406299-1	RJ45	Standard	13.72	Thru-hole	Side	Without	Yes	Cat 5e	Without	No	PCB and panel
5406300-2	RJ45	Standard	13.72	Thru-hole	Side	Without	Yes	Cat 5	Without	No	PCB and panel
5406429-1	RJ45	Low	12.7	Thru-hole	Side	Without	Yes	Cat 3	With	No	PCB

RIGHT ANGLE JACKS (CONTINUED)

8 positions/ 8 contacts											
Part number	Type	Profile	Height (mm)	Mount style	Mating entry	Leds	Shielded	Performance	Panel stops	Inverted	Grounding options
5406721-1	RJ45	Low	12.4	SMT	Side	Without	No	Cat 5	With	Yes	Without
5406721-2	RJ45	Low	12.4	SMT	Side	Without	No	Cat 5	With	Yes	Without
5406721-3	RJ45	Low	12.4	SMT	Side	Without	No	Cat 5	With	Yes	Without
5406721-4	RJ45	Low	12.4	SMT	Side	Without	No	Cat 5	With	Yes	Without
5406903-4	RJ45	Standard	12.95	Thru-hole	Side	Without	Yes	Cat 3	Without	No	Without
5520243-4	RJ45	Low	19.05	Thru-hole	Side	Without	No	Cat 3	Flange	No	Without
5520251-4	RJ45	Standard	16.13	Thru-hole	Side	Without	No	Cat 3	With	No	Without
5520252-4	RJ45	Standard	16.13	Thru-hole	Side	Without	No	Cat 3	With	No	Without
5520426-4	RJ45	Standard	16.2	Thru-hole	Side	Without	No	Cat 3	Without	No	Without
5554517-1	RJ45	Standard	16.2	Thru-hole	Side	Without	No	Cat 3	Without	No	Without
5555141-1	RJ45	Low	12.57	Thru-hole	Side	Without	Yes	Cat 3	Without	No	PCB and panel
5555153-1	RJ45	Low	12.7	Thru-hole	Side	Without	Yes	Cat 3	With	No	PCB
5555153-3	RJ45	Low	12.7	Thru-hole	Side	Without	Yes	Cat 3	With	No	PCB
5555153-5	RJ45	Low	12.57	Thru-hole	Side	Without	Yes	Cat 3	With	No	PCB
5555153-6	RJ45	Low	12.7	Thru-hole	Side	Without	Yes	Cat 3	With	No	PCB
5555162-1	RJ45	Low	12.57	Thru-hole	Side	Without	No	Cat 3	With	No	Without
5555164-1	RJ45	Low	12.7	Thru-hole	Side	Without	No	Cat 3	Without	No	Without
5555164-4	RJ45	Low	12.7	Thru-hole	Side	Without	No	Cat 3	Without	No	Without
5555166-1	RJ45	Low	12.7	Thru-hole	Side	Without	No	Cat 3	With	No	Without
5555167-1	RJ45	Low	12.7	Thru-hole	Side	Without	No	Cat 3	Without	No	Without
5555167-4	RJ45	Low	12.7	Thru-hole	Side	Without	No	Cat 3	Without	No	Without
5555248-1	RJ45	Low	12.7	SMT	Side	Without	No	Cat 3	With	No	Without
5555764-1	RJ45	Low	12.7	SMT	Side	Without	No	Cat 3	Without	No	Without
5555764-3	RJ45	Low	12.7	SMT	Side	Without	No	Cat 3	Without	No	Without
5556591-1	RJ45	Low	12.7	Thru-hole	Side	Without	Yes	Cat 3	With	No	PCB
5557785-1	RJ45	Low	13.39	Thru-hole	Side	Without	No	Cat 3	Without	No	Without
5557786-1	RJ45	Low	13.64	Thru-hole	Side	Without	Yes	Cat 3	Without	No	PCB
5557788-1	RJ45	Standard	13.39	Thru-hole	Side	Without	No	Cat 3	Without	No	Without
5557789-1	RJ45	Low	13.64	Thru-hole	Side	Without	Yes	Cat 3	Without	No	PCB
5557791-1	RJ45	Low	13.64	Thru-hole	Side	Without	Yes	Cat 3	Without	No	PCB and panel
5558178-1	RJ45	Low	12.57	SMT	Side	Without	Yes	Cat 3	With	No	Without
5558310-1	RJ45	Low	13.64	Thru-hole	Side	Without	Yes	Cat 3	Without	No	PCB
5558341-1	RJ45	Standard	13.39	Thru-hole	Side	Without	No	Cat 5	Without	No	Without

RIGHT ANGLE JACKS (CONTINUED)

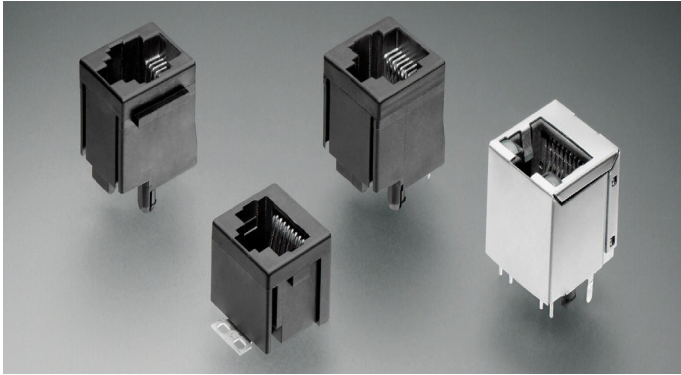
8 positions/ 8 contacts											
Part number	Type	Profile	Height (mm)	Mount style	Mating entry	Leds	Shielded	Performance	Panel stops	Inverted	Grounding options
5558343-1	RJ45	Low	13.39	Thru-hole	Side	Without	No	Cat 5	With	No	Without
5558344-1	RJ45	Low	13.76	Thru-hole	Side	Without	Yes	Cat 5	Without	No	PCB and panel
5558382-1	RJ45	Low	12.57	Thru-hole	Side	Without	Yes	Cat 3	Without	No	PCB and panel
5569115-1	RJ45	Low	12.7	Thru-hole	Side	Without	Yes	Cat 3	With	No	PCB and panel
5569118-1	RJ45	Low	15.24	Thru-hole	Side	Without	No	Cat 3	Without	No	Without
6116518-1	RJ45	Low	13.39	Thru-hole	Side	Without	No	Cat 5e	Without	No	Without
6116526-1	RJ45	Standard	13.63	Thru-hole	Side	Without	Yes	Cat 5e	Without	No	PCB
6-1734324-3	RJ45	Standard	11.3	Thru-hole	Side	With	Yes	Cat 3	With	No	PCB and panel
6-1734324-7	RJ45	Standard	11.3	Thru-hole	Side	With	Yes	Cat 3	With	No	PCB and panel
6339160-1	RJ45	Standard	13.35	SMT	Side	Without	Yes	Cat 5	Without	Yes	Without
6339191-1	RJ45	Standard	13.35	SMT	Side	With	Yes	Cat 5	Without	Yes	PCB and panel
6339191-4	RJ45	Standard	13.35	SMT	Side	With	Yes	Cat 5	Without	Yes	PCB and panel
6339191-5	RJ45	Standard	13.35	SMT	Side	With	Yes	Cat 5	Without	Yes	PCB and panel

10 positions/ 8 contacts											
Part number	Type	Profile	Height (mm)	Mount style	Mating entry	Leds	Shielded	Performance	Panel stops	Inverted	Grounding options
1470648-1	RJ45	Low	11.5	Thru-hole	Side	Without	No	Cat 3	Without	No	Without
1734580-5	RJ45	Low	12.25	Thru-hole	Side	Without	Yes	Cat 3	Without	No	PCB
1734580-8	RJ45	Low	12.25	Thru-hole	Side	Without	Yes	Cat 3	Without	No	PCB

10 positions/ 10 contacts											
Part number	Type	Profile	Height (mm)	Mount style	Mating entry	Leds	Shielded	Performance	Panel stops	Inverted	Grounding options
1-1734580-1	RJ45	Low	12.25	Thru-hole	Side	Without	Yes	Cat 3	Without	No	PCB
1-1734580-4	RJ45	Low	12.25	Thru-hole	Side	Without	Yes	Cat 3	Without	No	PCB
5558065-1	RJ45	Low	13.33	Thru-hole	Side	Without	No	Cat 3	Without	No	Without
5558066-1	RJ45	Low	13.33	Thru-hole	Side	Without	No	Cat 3	Without	No	Without
5558067-1	RJ45	Low	13.64	Thru-hole	Side	Without	Yes	Cat 3	Without	No	PCB
5558068-1	RJ45	Low	13.64	Thru-hole	Side	Without	Yes	Cat 3	Without	No	PCB
5558070-1	RJ45	Low	13.64	Thru-hole	Side	Without	Yes	Cat 3	Without	No	PCB and panel

48 positions/ 48 contacts											
Part number	Type	Profile	Height (mm)	Mount style	Mating entry	Leds	Shielded	Performance	Panel stops	Inverted	Grounding options
1761482-1	MRJ21	-	13.56	Thru-hole	Side	Without	Yes	Cat 5e	Without	No	Without
1761482-2	MRJ21	-	13.56	Thru-hole	Side	Without	Yes	Cat 5e	Without	No	PCB
1761482-4	MRJ21	-	13.56	Press-fit	Side	Without	Yes	Cat 5e	Without	No	Without
1761715-2	MRJ21	-	13.56	Press-fit	Side	Without	Yes	Cat 5e	Without	No	PCB

VERTICAL JACKS



TE's extensive product offering provides a broad selection of vertical modular jacks for your jack application needs.

Features

- Cat 3, Cat 5 performance ratings
- Low-profile, through-hole, or SMT
- With and without shielding
- With and without LEDs
- Grounding and panel features

4 positions/ 4 contacts											
Part number	Type	Profile	Height (mm)	Mount style	Mating entry	LEDs	Shielded	Performance	Panel stops	Inverted	Grounding options
1-338084-3	RJ22	Standard	12.7	SMT	Top	Without	No	Cat 3	Without	No	Without
1-338084-6	RJ22	Standard	12.7	SMT	Top	Without	No	Cat 3	Without	No	Without
216562-3	RJ22	Standard	16.4	Thru-hole	Top	Without	No	Cat 3	With	No	Without
5520257-2	RJ22	Standard	16.5	Thru-hole	Top	Without	No	Cat 3	With	No	Without
5558872-1	RJ22	Standard	16.5	Thru-hole	Top	Without	No	Cat 3	Without	No	Without
9-216444-9	RJ22	Standard	12	Thru-hole	Bottom	Without	No	Cat 3	Without	No	Without

6 positions/ 4 contacts											
Part number	Type	Profile	Height (mm)	Mount style	Mating entry	LEDs	Shielded	Performance	Panel stops	Inverted	Grounding options
1-338086-4	RJ14	Standard	12.7	SMT	Top	Without	No	Cat 3	Without	No	Without
216548-2	RJ14	Standard	16.4	Thru-hole	Top	Without	No	Cat 3	With	No	Without
216564-2	RJ14	Standard	16.4	Thru-hole	Top	Without	No	Cat 3	With	No	Without
2-338086-4	RJ14	Standard	12.7	SMT	Top	Without	No	Cat 3	Without	No	Without
5520258-2	RJ14	Low	16.5	Thru-hole	Top	Without	No	Cat 3	With	No	Without
5520425-2	RJ14	Low	16.5	Thru-hole	Top	Without	No	Cat 3	Without	No	Without

6 positions/ 6 contacts											
Part number	Type	Profile	Height (mm)	Mount style	Mating entry	LEDs	Shielded	Performance	Panel stops	Inverted	Grounding options
100190-2	RJ25	Standard	19.6	Thru-hole	Top	Without	No	Cat 3	With	No	Without
1-1734858-3	RJ25	Standard	15	SMT	Top	Without	No	Cat 3	Without	No	Without
1-338086-3	RJ25	Standard	12.7	SMT	Top	Without	No	Cat 3	Without	No	Without
1-338086-5	RJ25	Standard	12.7	SMT	Bottom	Without	No	Cat 3	Without	No	Without
1-338086-6	RJ25	Standard	12.7	SMT	Bottom	Without	No	Cat 3	Without	No	Without
1857381-1	RJ25	Standard	12.7	SMT	Top	Without	No	Cat 3	Without	No	Without
216446-1	RJ25	Low	12	Thru-hole	Bottom	Without	No	Cat 3	Without	No	Without

VERTICAL JACKS (CONTINUED)

6 positions/ 6 contacts											
Part number	Type	Profile	Height (mm)	Mount style	Mating entry	LEDs	Shielded	Performance	Panel stops	Inverted	Grounding options
216548-1	RJ25	Standard	16.4	Thru-hole	Top	Without	No	Cat 3	With	No	Without
216564-1	RJ25	Standard	16.4	Thru-hole	Top	Without	No	Cat 3	With	No	Without
2-338086-3	RJ25	Standard	12.7	SMT	Top	Without	No	Cat 3	Without	No	Without
5520258-3	RJ25	Standard	16.5	Thru-hole	Top	Without	No	Cat 3	With	No	Without
5520425-3	RJ25	Standard	16.5	Thru-hole	Top	Without	No	Cat 3	Without	No	Without
5554990-1	RJ25	Standard	16.38	Thru-hole	Top	Without	No	Cat 3	With	No	Without
5569984-1	RJ25	Standard	16.51	Thru-hole	Top	Without	No	Cat 3	Without	No	Without

8 positions/ 8 contacts											
Part number	Type	Profile	Height (mm)	Mount style	Mating entry	LEDs	Shielded	Performance	Panel stops	Inverted	Grounding options
100616-1	RJ45	Standard	16.71	Thru-hole	Top	Without	Yes	Cat 3	With	No	PCB
100616-2	RJ45	Standard	16.71	Thru-hole	Top	Without	Yes	Cat 3	With	No	PCB
1-1734577-1	RJ45	Standard	16.5	Thru-hole	Top	With	Yes	Cat 3	Without	No	PCB
1-1734577-3	RJ45	Standard	16.5	Thru-hole	Top	With	Yes	Cat 3	Without	No	PCB
1-1734577-4	RJ45	Standard	16.5	Thru-hole	Top	With	Yes	Cat 3	Without	No	PCB
1-1775089-3	RJ45	Low	16.5	Thru-hole	Top	Without	No	Cat 3	Without	No	Without
1-338088-3	RJ45	Standard	12.7	SMT	Top	Without	No	Cat 3	Without	No	Without
1-338088-6	RJ45	Standard	12.7	SMT	Top	Without	No	Cat 3	Without	No	Without
1705549-1	RJ45	Standard	13.02	SMT	Top	Without	Yes	Cat 3	Without	-	PCB
1734577-1	RJ45	Standard	16.5	Thru-hole	Top	With	Yes	Cat 3	Without	No	PCB
1734577-2	RJ45	Standard	16.5	Thru-hole	Top	With	Yes	Cat 3	Without	No	PCB
1734577-3	RJ45	Standard	16.5	Thru-hole	Top	With	Yes	Cat 3	Without	No	PCB
1734577-4	RJ45	Standard	16.5	Thru-hole	Top	With	Yes	Cat 3	Without	No	PCB
216550-1	RJ45	Standard	16.4	Thru-hole	Top	Without	No	Cat 3	With	No	Without
216550-2	RJ45	Standard	16.4	Thru-hole	Top	Without	No	Cat 3	With	No	Without
216811-1	RJ45	Standard	19	SMT	Side	Without	Yes	Cat 3	Without	No	Without
2-1734858-3	RJ45	Standard	15.9	SMT	Top	Without	No	Cat 3	Without	No	Without
2-338088-3	RJ45	Standard	12.7	SMT	Top	Without	No	Cat 3	Without	No	Without
3-1734577-1	RJ45	Standard	16.5	Thru-hole	Top	Without	Yes	Cat 3	Without	No	PCB
3-1734577-4	RJ45	Standard	16.5	Thru-hole	Top	Without	Yes	Cat 3	Without	No	PCB
3-1734577-5	RJ45	Standard	16.5	Thru-hole	Top	Without	Yes	Cat 3	Without	No	PCB
3-338088-3	RJ45	Standard	12.7	SMT	Top	Without	No	Cat 3	Without	No	Without
4-1734577-1	RJ45	Standard	16.5	Thru-hole	Top	With	Yes	Cat 3	Without	No	PCB
4-338088-3	RJ45	Standard	12.7	SMT	Top	Without	No	Cat 3	Without	No	Without
5406436-1	RJ45	Standard	16.64	Thru-hole	Top	Without	Yes	Cat 3	With	No	PCB and panel

VERTICAL JACKS (CONTINUED)

8 positions/ 8 contacts											
Part number	Type	Profile	Height (mm)	Mount style	Mating entry	LEDs	Shielded	Performance	Panel stops	Inverted	Grounding options
5520259-4	RJ45	Standard	16.51	Thru-hole	Top	Without	No	Cat 3	With	No	Without
5520260-4	RJ45	Standard	16.51	Thru-hole	Top	Without	No	Cat 3	With	No	Without
5555799-1	RJ45	Standard	16.5	Thru-hole	Top	Without	No	Cat 3	Without	No	Without
5556416-1	RJ45	Standard	16.5	Thru-hole	Top	Without	No	Cat 3	Without	No	Without
5557484-1	RJ45	Standard	16.89	Thru-hole	Top	Without	Yes	Cat 3	With	No	PCB and panel
5557730-1	RJ45	Standard	16.76	Thru-hole	Top	Without	Yes	Cat 3	With	No	PCB and panel
5557969-1	RJ45	Standard	16.77	Thru-hole	Top	Without	Yes	Cat 3	With	No	PCB and panel
5557969-2	RJ45	Standard	16.77	Thru-hole	Top	Without	Yes	Cat 3	With	No	PCB and panel
5569284-1	RJ45	Standard	16.5	Thru-hole	Top	Without	No	Cat 3	Without	No	Without
6116201-1	RJ45	Standard	16.5	Press-fit	Top	Without	No	Cat 5	Without	No	Without
6116201-2	RJ45	Standard	16.5	Press-fit	Top	Without	No	Cat 5	Without	No	Without
6116202-1	RJ45	Standard	16.63	Press-fit	Top	Without	Yes	Cat 5	Without	Yes	PCB
6116202-2	RJ45	Standard	16.63	Press-fit	Top	Without	Yes	Cat 5	Without	Yes	PCB
6116202-6	RJ45	Standard	16.63	Press-fit	Top	Without	Yes	Cat 5	Without	Yes	PCB
6116418-1	RJ45	Standard	16.82	Press-fit	Top	Without	Yes	Cat 5	Without	Yes	PCB and panel
6368115-1	RJ45	Standard	16.64	Thru-hole	Top	Without	Yes	Cat 3	With	No	PCB and panel
6368150-1	RJ45	Standard	16.82	Thru-hole	Top	Without	Yes	Cat 5	Without	No	PCB
6368150-2	RJ45	Standard	16.58	Thru-hole	Top	Without	Yes	Cat 5	Without	Yes	PCB
6368150-3	RJ45	Standard	16.82	Thru-hole	Top	Without	Yes	Cat 5	Without	No	PCB

For more information

te.com/products/stdmodjacks

TE Technical Support Center

USA:	+1 (800) 522-6752
Canada:	+1 (905) 475-6222
Mexico:	+52 (0) 55-1106-0800
Latin/S. America:	+54 (0) 11-4733-2200
Germany:	+49 (0) 6251-133-1999
UK:	+44 (0) 800-267666
France:	+33 (0) 1-3420-8686
Netherlands:	+31 (0) 73-6246-999
China:	+86 (0) 400-820-6015

Connect With Us

We make it easy to connect with our experts and are ready to provide all the support you need.
Visit te.com/support to chat with a Product Information Specialist.

te.com

TE, TE Connectivity, TE connectivity (logo), EVERY CONNECTION COUNTS and MRJ21 are trademarks owned or licensed by the TE Connectivity Ltd. family of companies. Other product names, logos, and company names mentioned herein may be trademarks of their respective owners.

The information given herein, including drawings, illustrations and schematics which are intended for illustration purposes only, is believed to be reliable. However, TE Connectivity makes no warranties as to its accuracy or completeness and disclaims any liability in connection with its use. TE Connectivity's obligations shall only be as set forth in TE Connectivity's Standard Terms and Conditions of Sale for this product and in no case will TE Connectivity be liable for any incidental, indirect or consequential damages arising out of the sale, resale, use or misuse of the product. Users of TE Connectivity products should make their own evaluation to determine the suitability of each such product for the specific application.

©2024 TE Connectivity. All Rights Reserved.

06-24