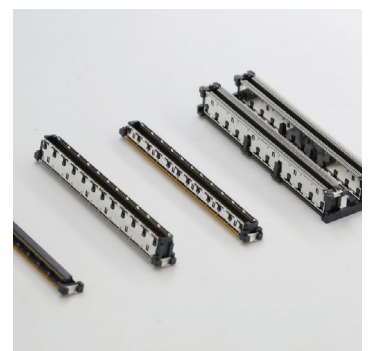
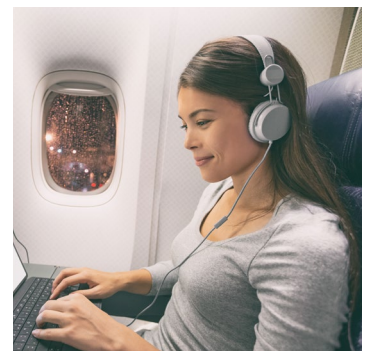


BROCHURE

COMPUTER-ON-MODULE (COM) BOARD-TO-BOARD CONNECTOR SOLUTIONS

*High-speed vertical parallel board-to-board connectors
with excellent mechanical and signal integrity performance*



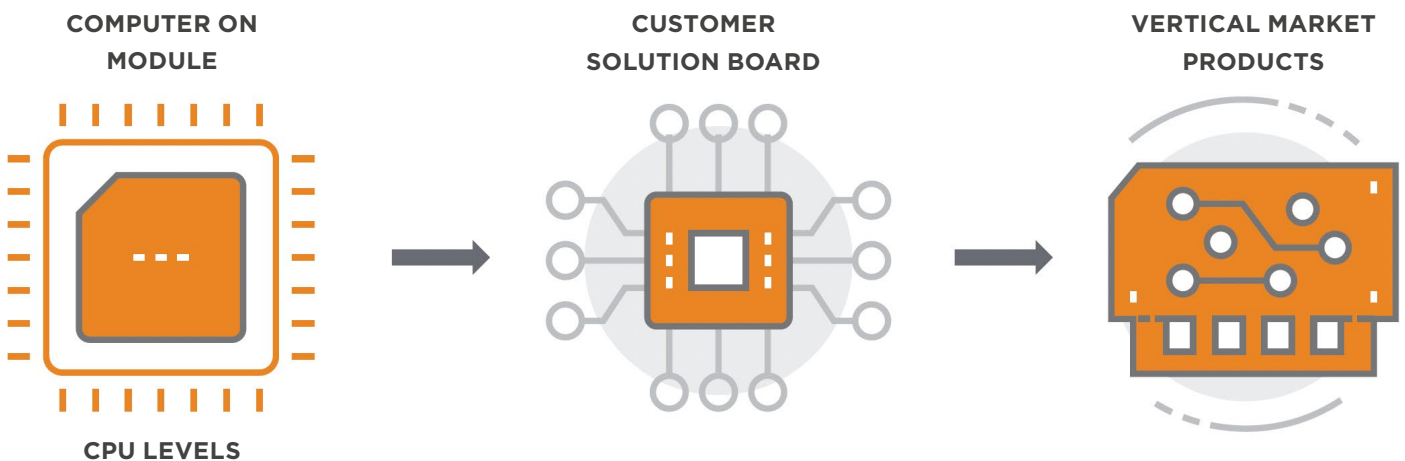
COMPUTER-ON-MODULE (COM) BOARD-TO-BOARD CONNECTOR SOLUTIONS

0.5mm centerline connectors can offer up to 25 giga transmission per second (GT/s) in flexible stacking heights to address COM Express connections between COM and solution boards.

COMPUTER-ON-MODULE & COM EXPRESS

COMs are widely-used modular CPU boards that feature high integration, quick design, easy installation and maintenance and facilitate smooth upgrades. They are ready-to-use, application-agnostic embedded platforms that can accelerate end product's time-to-market in a cost-effective way.

COM Express is a PCI Industrial Computer Manufacturers Group (PICMG) standard for COMs, which provides next generation performance for the smallest state-of-the-art embedded modules in diverse applications from high-end systems and harsh environments. It is designed for the latest chip sets and serial signaling protocols, including PCI Express Gen 4, Gen 3, 10GbE, SATA, USB 3.0, and high resolution video interfaces.

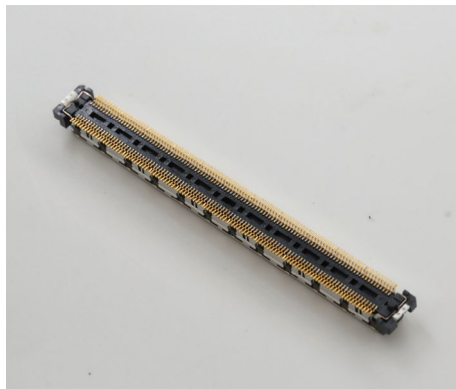


COM CONNECTORS FROM TE CONNECTIVITY (TE)



- Two-piece connectors in 0.5mm centerline, designed for use in vertical parallel stacking board-to-board applications
- Includes solution board (carrier board) mount receptacles and plugs on COMs
- Connection solutions come in various combinations of plug and receptacle height and can provide design flexibility with the ability to vary the spacing between parallel boards
- New generations can support up to 25 GT/s data rate

New contact design can economically enable better performance: higher speed, improved mechanical and signal integrity performance



Product Specification

- Position sizes:
 - 40/80/120/160/220P dual in-line
 - 440P using two 220P connected by a bridge
- Stack heights: 5mm and 8mm
- Speed: 8Gbps (PCIe Gen3) & 16Gbps (PCIe Gen4) & 25+Gbps (PCIe Gen4)
- Smooth upgrade from 8G to 16G to 25G with full backwards compatibility
- PCB Termination: Surface mount (SMT)
- Temperature Range: -45°C to 105°C
- Vertical mating configuration
- Plating options available
- Tape & Reel / Tray packaging

Key Features & Benefits

Faster Data Speed

- Enhanced contact design can enable better signal integrity performance
- Up to 25 Gbps data rate, enabling PCIe Gen4 applications

Easier Assembly

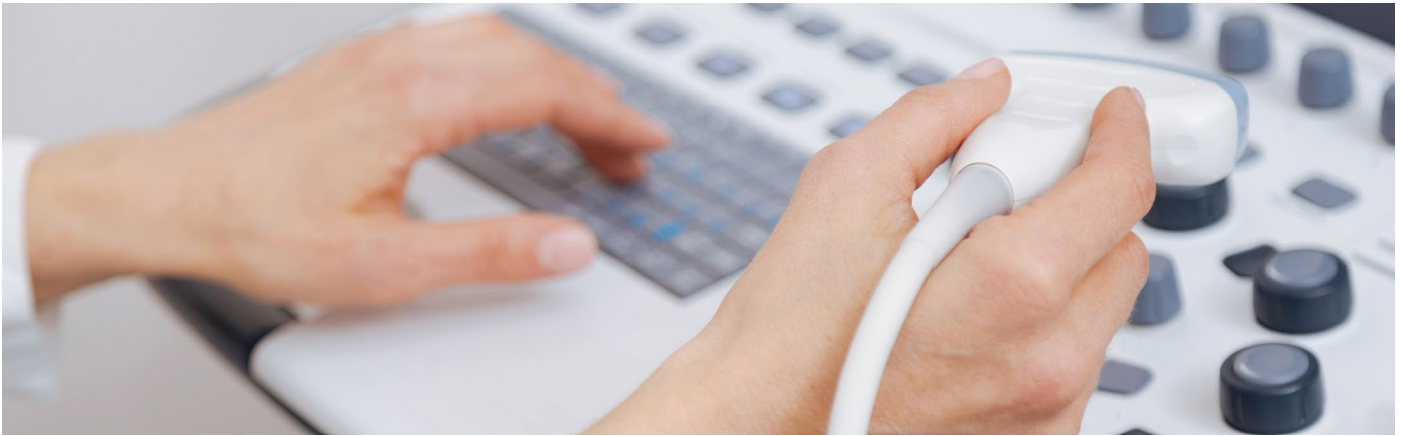
- Improved mechanical design can reduce mating and unmating force by 30% compared to our previous generation products

Smooth Upgrade

- Same footprint to COM Express standards
- Not required to change PCB footprints when upgrading applications

Design Flexibility

- More position options - 40/80/120/160/220/440
- 5mm & 8mm stacking heights



Target Applications

- COM designs
- Other applications where vertical parallel board-to-board connections are needed, for example:
 - Embedding modules
 - Customized carrier/PC/control boards

Primary Industries

- Industrial Machinery & Equipment
- Test & Measurement Equipment
- Aerospace & Defense
- Computer Equipment & Peripherals
- Medical Devices & Equipment
- Telecommunication Equipment
- Security Products

PRODUCT OFFERING - 25 GT/S

Height (mm)	40 Position	80 Position	120 Position	160 Position	220 Position	440 Position
Receptacle, Vertical						
3.25	2499542-1	2499542-2	2499542-3	2499542-4	2499542-5	2499542-6
Plug, Vertical						
7.45	2499538-1	2499538-2	2499538-3	2499538-4	2499538-5	2499538-6
4.45	2499526-1	2499526-2	2499526-3	2499526-4	2499526-5	2499526-6

Mating height = REC height + Plug height - 2.7 mm

PRODUCT OFFERING - 16 GT/S

Height (mm)	Part Number	Position	Plating	Cap	Package
5 mm Plug	2357787-1	220	8u"	No	Hard Tray
	2357787-3	220	8u"	Yes	Tape & Reel
	2357787-4	220	8u"	No	Tape & Reel
	2369316-1	440	8u"	Yes	Hard Tray
8 mm Plug	2357798-1	220	8u"	No	Hard Tray
	2357798-2	220	8u"	Yes	Hard Tray
	2357798-3	220	8u"	Yes	Tape & Reel
	2357798-4	220	8u"	No	Tape & Reel
	2369317-1	440	8u"	Yes	Hard Tray
4 mm Receptacle	2357739-1	220	8u"	No	Hard Tray
	2357739-2	220	8u"	Yes	Hard Tray
	2357739-3	220	8u"	Yes	Tape & Reel
	2369315-1	440	8u"	Yes	Hard Tray

PRODUCT OFFERING - 8 GT/S

Height (mm)	Part Number	Position	Plating	Cap	Package
5 mm Plug	3-1827253-6	220	8u"	No	Hard Tray
	4-1827253-8	220	8u"	Yes	Tape & Reel
	4-1827253-6	220	8u"	No	Tape & Reel
	9-1827253-6	220	30u"	No	Hard Tray
	9-1827253-9	220	30u"	Yes	Tape & Reel
	3-1827233-6	440	8u"	Yes	Hard Tray
8 mm Plug	3-6318491-6	220	8u"	No	Hard Tray
	9-6318491-6	220	8u"	Yes	Hard Tray
	8-6318491-6	220	8u"	No	Hard Tray
	9-1939756-6	220	30u"	Yes	Hard Tray
	3-1939756-6	220	30u"	No	Hard Tray
	3-2040713-6	220	30u"	Yes	Tape & Reel
	3-5353652-6	440	8u"	Yes	Hard Tray
	3-5353652-7	440	8u"	Yes	Hard Tray*
4 mm Receptacle	3-6318490-6	220	8u"	No	Hard Tray
	3-2040714-7	220	8u"	Yes	Tape & Reel
	6-5353606-6	220	8u"	Yes	Hard Tray
	3-1939755-6	220	30u"	No	Hard Tray
	3-1827231-6	440	8u"	Yes	Hard Tray

*Slim tray

Connect With Us

We make it easy to connect with our experts and are ready to provide all the support you need.
Visit te.com/support to chat with a Product Information Specialist.

te.com

TE, TE Connectivity, TE connectivity (logo), and EVERY CONNECTION COUNTS are trademarks owned or licensed by the TE Connectivity plc family of companies. Other product names, logos, and company names mentioned herein may be trademarks of their respective owners.

The information given herein, including drawings, illustrations and schematics which are intended for illustration purposes only, is believed to be reliable. However, TE Connectivity makes no warranties as to its accuracy or completeness and disclaims any liability in connection with its use. TE Connectivity's obligations shall only be as set forth in TE Connectivity's Standard Terms and Conditions of Sale for this product and in no case will TE Connectivity be liable for any incidental, indirect or consequential damages arising out of the sale, resale, use or misuse of the product. Users of TE Connectivity products should make their own evaluation to determine the suitability of each such product for the specific application.

©2026 TE Connectivity. All Rights Reserved.

01-26