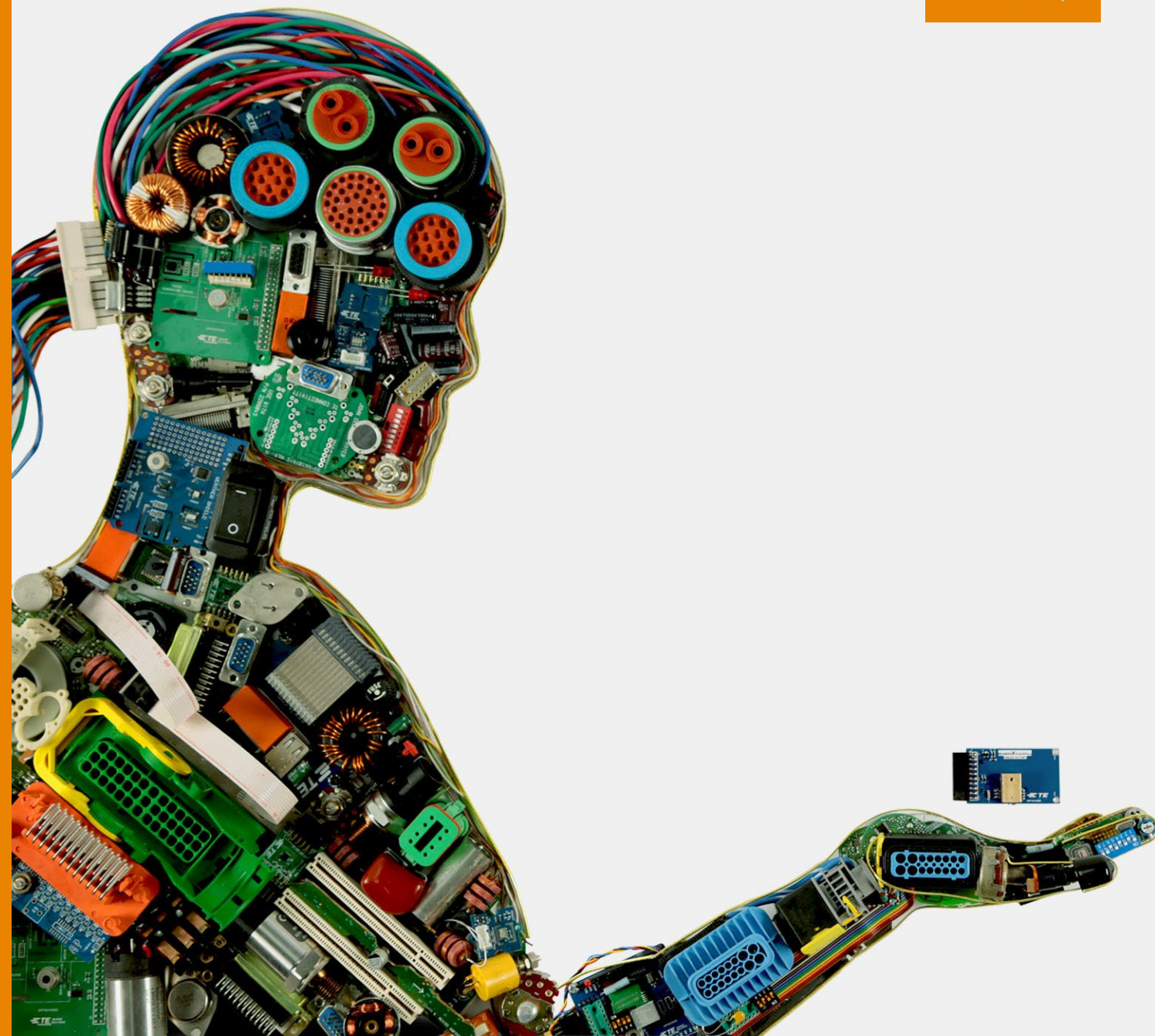


# WHEN TECHNOLOGY CONNECTS, SO DOES HUMANITY.

TE CONNECTIVITY  
2022 COMPANY OVERVIEW

EVERY CONNECTION COUNTS





**OUR PURPOSE**

**WE CREATE  
A SAFER,  
SUSTAINABLE,  
PRODUCTIVE AND  
CONNECTED  
FUTURE.**



**ADVANCING THE FUTURE  
OF TRANSPORTATION**



**REVOLUTIONIZING  
MEDICAL TECHNOLOGY**



**ENABLING GLOBAL  
COMMUNICATION  
NETWORKS**



**MAKING FACTORIES &  
HOMES SMARTER**



**\$2.1B**

**COMMUNICATIONS**

Appliances, Data  
& Devices

**\$3.8B**

**INDUSTRIAL**

Industrial, Aerospace,  
Defense & Marine,  
Medical, Energy



**\$9.0B**

**TRANSPORTATION**

Automotive, Industrial &  
Commercial Transportation,  
Sensors, Application Tooling

**CONNECT  
LIKE THE WORLD  
DEPENDS ON IT.  
BECAUSE IT DOES.**

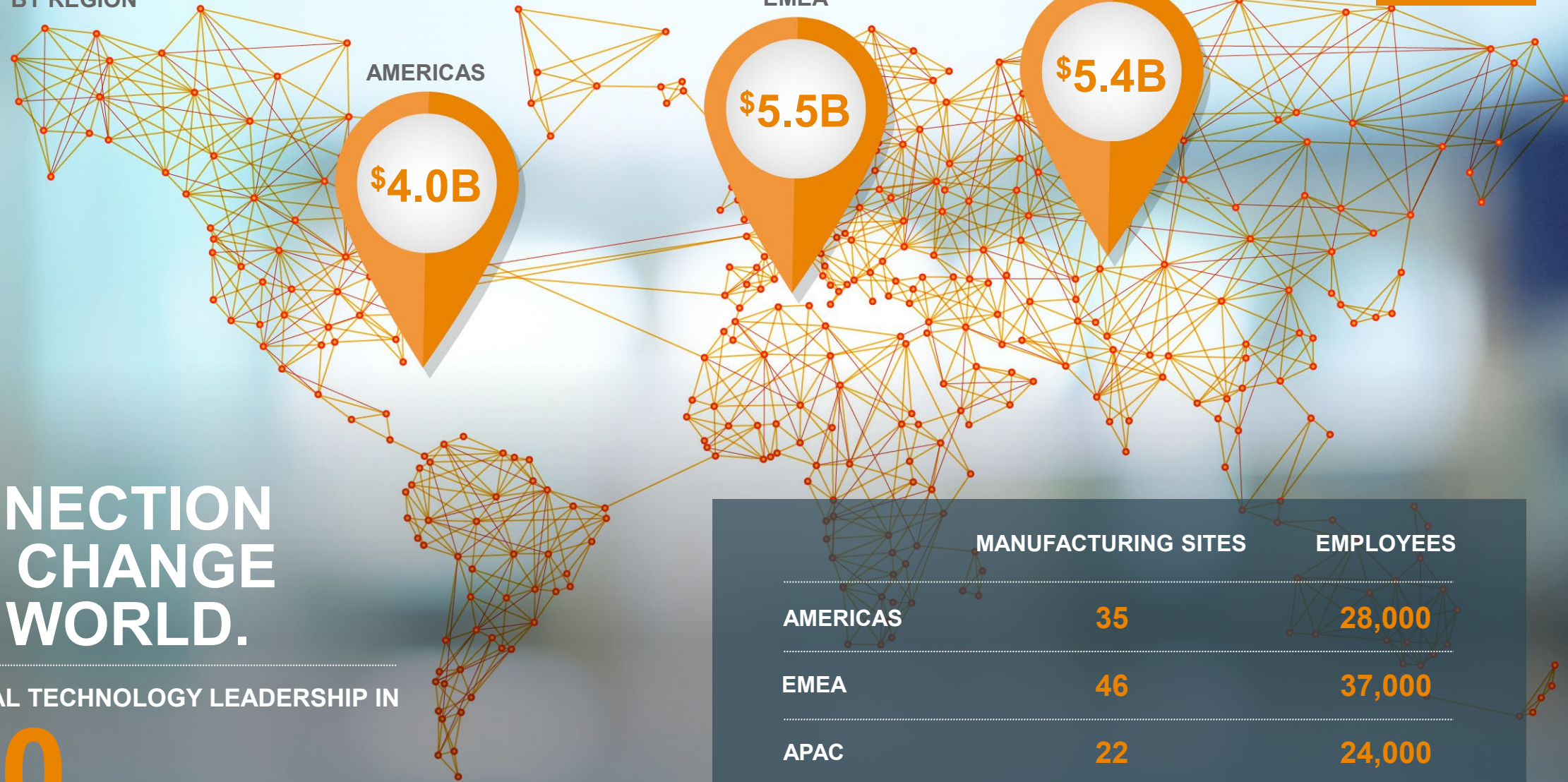
**247B**

PRODUCTS MANUFACTURED ANNUALLY





FY21 SALES BY REGION



AMERICAS

\$4.0B

EMEA

\$5.5B

APAC

\$5.4B

ANY CONNECTION CAN CHANGE THE WORLD.

INDUSTRIAL TECHNOLOGY LEADERSHIP IN

140

COUNTRIES

	MANUFACTURING SITES	EMPLOYEES
AMERICAS	35	28,000
EMEA	46	37,000
APAC	22	24,000

*Sales figures have been rounded for presentation purposes*



# INDUSTRIAL TECHNOLOGY LEADERSHIP



**FORTUNE**  
WORLD'S MOST  
ADMIRED  
COMPANIES 2021



Top 100  
Global  
Innovator  
2021



Clarivate™



**FAST COMPANY**



TE CONNECTIVITY

**15K+**

**PATENTS**  
granted or pending

**\$675M+**

**INVESTED** in engineering,  
research & development

**8000+**

**ENGINEERS**  
globally

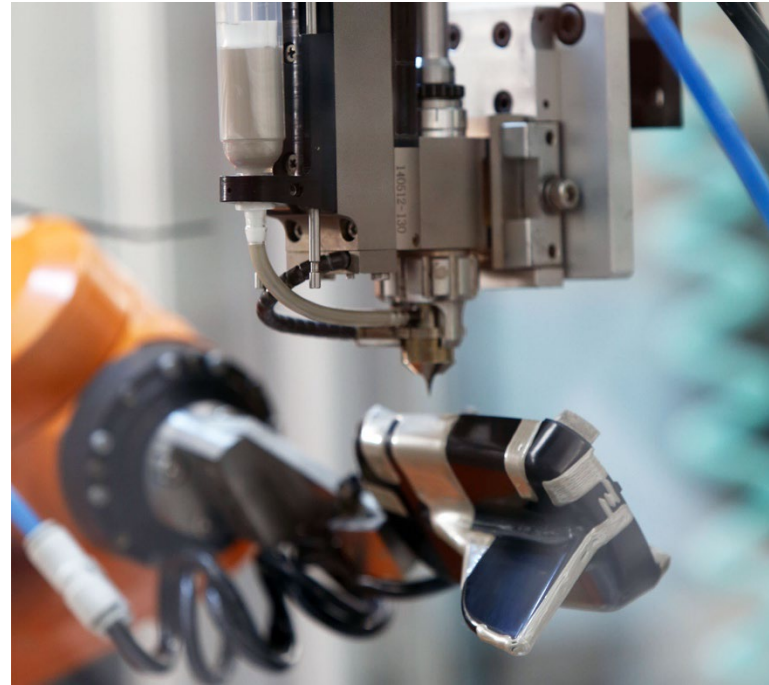
Approximately

**20%**

of sales from  
new products



# We Unleash the Potential of Every Connection



**THE TE OPERATING ADVANTAGE (TEOA) PROVIDES VALUE TO CUSTOMERS BY OPTIMIZING:**



**QUALITY**



**SERVICE**



**DELIVERY**



**CUSTOMER SUPPORT**



# With Great Power Comes Great Sustainability



**GREENHOUSE GAS INTENSITY**  
FY20 VS FY10



**ENERGY USE INTENSITY**  
FY20 VS FY10



**WATER USAGE**  
FY20 VS FY10



**\$5.6M**

GLOBAL CHARITABLE GIVING FY20

**650K+**

PEOPLE IMPACTED IN NEXT-GENERATION TECHNOLOGY EDUCATION FY20

**\$2.1B**

LOCAL ECONOMIC IMPACT FROM SUPPLY CHAIN FY20



Member of **Dow Jones Sustainability Indices**

Powered by the S&P Global CSA

**Sustainability Yearbook**  
Member 2021

**S&P Global**



# Unleash Our Global Talent



We are committed to a safe, diverse and inclusive work environment where creativity, collaboration and innovation flourish.

## OUR CORE VALUES

- INTEGRITY
- ACCOUNTABILITY
- TEAMWORK
- INNOVATION





# Connect With Us

Learn more  
[www.te.com](http://www.te.com)



Podcast



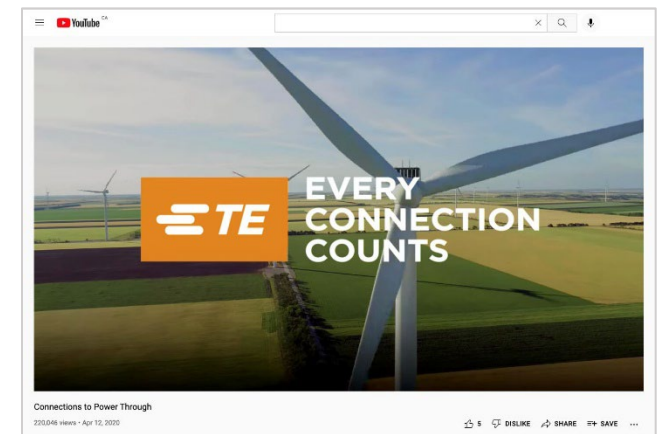
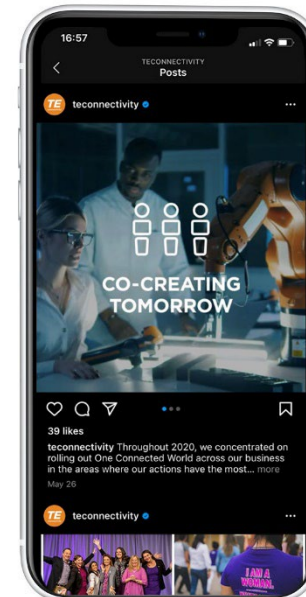
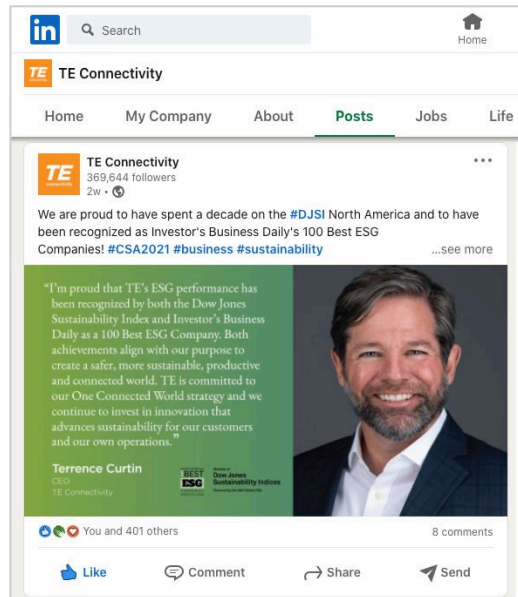
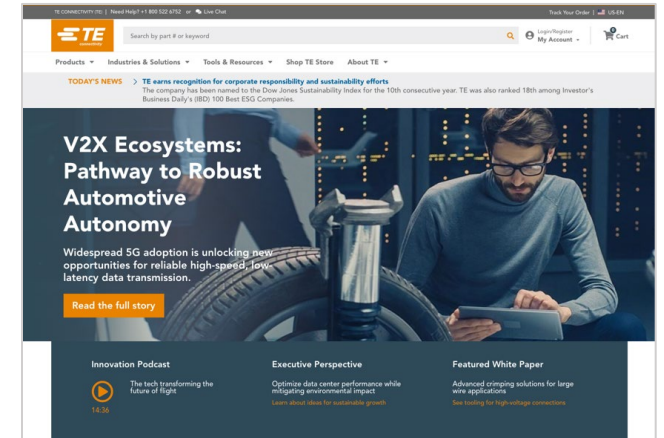
TE Tech Talks



Newsletter



24x7 Live Chat





---

# EVERY CONNECTION COUNTS

---