

TE CONNECTIVITY INDUSTRIAL AUTOMATION AND ELECTRIFICATION PRODUCT PORTFOLIO

BOARD CONNECTIVITY & SUBSYSTEMS

BOARD CON BESS

ERNI MaxiBridge
Connector

DYNAMIC BESS

BOARD HYBRID

DYNAMIC
Power & Signal Connector

**PCB TERMINAL BLOCKS
& RITS**

BOARD SIGNAL CORE

AMPMODU
Headers & Receptacles

MICRO-MATCH
Headers & Receptacles

BOARD SIGNAL FINE PITCH

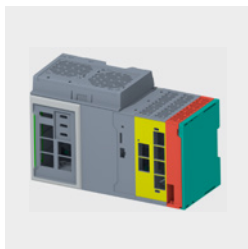
**SMC (Small Multiple
Connector)**

MicroSpeed Connector

SUBSYSTEMS



**Custom Electro-mechanical
Solutions - Focus IO (Input Output)**

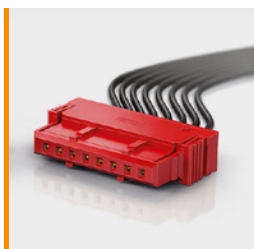


HPC
(High Power Charging)

HDC
(Heavy Duty Connector)

POWER & SIGNALS

BOARD CONNECTOR ASSEMBLED CABLE



Standard, Configurable & Customized Assembled Cables

FILTERS

EMC FILTERS

3-Phase Filters

DC Filters

1-Phase Filters

Inlet Filters

PQ FILTERS

Passive Harmonic Filters

Active Harmonic Filters

Output Filters

Filters for AFE

Line/Road Reactors

CHOKES

EMC Choke

ACCESSORIES

C13, C19 Connectors,
Power Cords

schaffner
MORE POWER TO YOU

is now part of



DELIVER A STRONGER VALUE
PROPOSITION TO OUR CUSTOMERS
AND PARTNERS

PANEL & RELAY SOLUTIONS

PCB UP TO 16 A RELAYS

SIGNAL RELAYS

PCB POWER RELAYS > 30 A



FORCE GUIDED RELAYS

PANEL & RELAY SOLUTIONS

PANEL-PLUG IN (PPI) RELAYS AND CIRCUIT BREAKERS



ENTRELEC DIN RAIL TERMINAL / DISTRIBUTION BLOCKS

SOLID STATE RELAYS

HIGH VOLTAGE DC CONTACTORS

SYSTEMS

MOTOR CONNECTIVITY

INTERCONTEC
(Signal/ Hybrid/Power)

MOTORMAN
Hybrid Connectors

INDUSTRIAL COMMS

**Circular And Rectangular
Connectors**

RJ45 Connectors

SYS CCAO

Cable Assembly

CABLE MANAGEMENT SOLUTION (CMS)

Cable Gland

Wiring Duct

ROOFLINE

**Roofline Products for
Rail Application**

About TE Connectivity

TE Connectivity plc (NYSE: TEL) is a global industrial technology leader creating a safer, sustainable, productive, and connected future. Our broad range of connectivity and sensor solutions enable the distribution of power, signal and data to advance next-generation transportation, energy networks, automated factories, data centers, medical technology and more. With more than 85,000 employees, including 9,000 engineers, working alongside customers in approximately 130 countries, TE ensures that EVERY CONNECTION COUNTS. Learn more at www.te.com and on LinkedIn, Facebook, WeChat, Instagram and X (formerly Twitter).

Connect With Us

We make it easy to connect with our experts and are ready to provide all the support you need. Visit te.com/support to chat with a Product Information Specialist.

te.com

TE, TE Connectivity, TE connectivity (logo), ERNI, MaxiBridge, Intercontec, MOTORMAN, ENTRELEC, Potter & Brumfield, Micro-MaTch, AMPMODU, Schaffner, MicroSpeed and EVERY CONNECTION COUNTS are trademarks owned or licensed by the TE Connectivity plc. family of companies. Other product names, logos, and company names mentioned herein may be trademarks of their respective owners.

While TE has made every reasonable effort to ensure the accuracy of the information in this document, TE does not guarantee that it is error-free, nor does TE make any other representation, warranty or guarantee that the information is accurate, correct, reliable or current. TE reserves the right to make any changes to the information contained herein without prior notice. TE Connectivity assumes only those obligations set forth in the terms and conditions for this product and shall in no event be liable for any incidental, indirect, or consequential damages arising out of the sale, resale, use, or misapplication of the product. TE expressly disclaims any implied warranties with respect to the information contained herein, including, but not limited to, implied warranties of merchantability or fitness for a particular purpose. Dimensions, specifications and/or information contained herein are for reference purposes only and are subject to change without notice. Consult TE for the latest dimensions, specifications and/or information. Users of TE Connectivity products must make their own assessment as to whether the respective product is suitable for the respective desired application.

© 2025 TE Connectivity. All Rights Reserved.

JS 04/25