



DIGITAL DATA NETWORKS PRODUCT PORTFOLIO

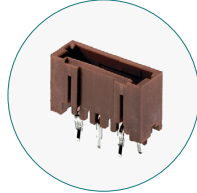
TE Connectivity (TE) offers a diverse and comprehensive product portfolio to support your connectivity needs. TE helps shape the connected future through collaborating with customers and ecosystem partners while pioneering new technologies. Our products can support the market needs for higher speeds, energy efficiency, and miniaturization in AI/cloud, edge, and endpoint markets. TE's manufacturing, value-added support and investments are focused on delivering top quality, highly efficient wired and wireless products to address dynamic design cycles.

TE offers a broad range of products which can be used across many industries, providing extensive options for customers and the opportunity to consolidate their supplier base. Our engineering and manufacturing expertise, combined with our global footprint allows us to deliver one of the largest connectivity and sensor product portfolios.

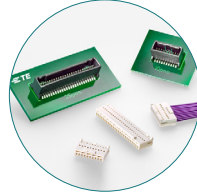
WIRE-TO-BOARD



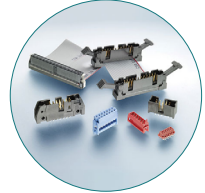
AMP CT
CONNECTORS



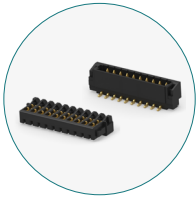
AMP MINI CT
CONNECTORS



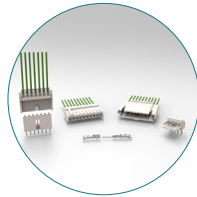
AMP MICRO CT
CONNECTORS



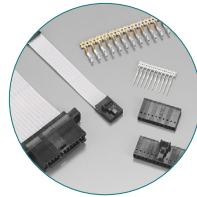
AMP-LATCH RIBBON
CABLE INTERCONNECTS



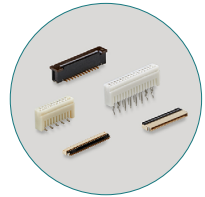
0.8MM LOW
PROFILE IDC



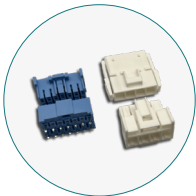
ECONOMY
INTERCONNECTION SERIES
(EIS)



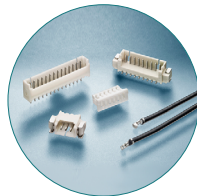
FLAT FLEXIBLE
CABLE (FFC)
CONNECTORS



FLEXIBLE PRINTED
CIRCUIT (FPC)
CONNECTORS



HIGH CURRENT
INTERCONNECT (HCI)



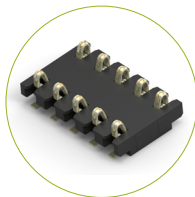
HIGH PERFORMANCE
INTERCONNECT (HPI)
CONNECTORS



BOARD-TO-BOARD



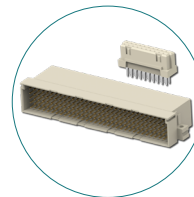
CHAMP DOCKING
CONNECTORS



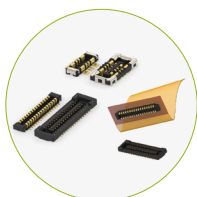
COMPRESSIVE
CONNECTORS



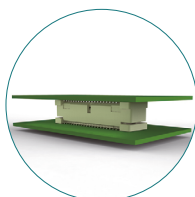
EUROCARD
CONNECTORS



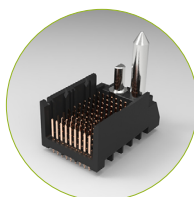
ERNI DIN/ERMET
CONNECTORS



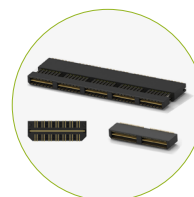
FINE PITCH BOARD-TO-BOARD
CONNECTORS



FREE HEIGHT
CONNECTORS



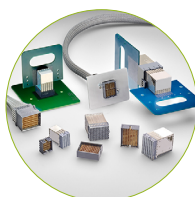
IMPACT BACKPLANE
CONNECTORS



MICTOR
CONNECTORS



PCB SPRING
CONTACTS

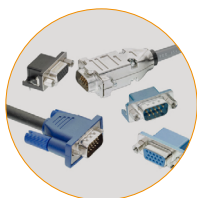


STRADA WHISPER BACKPLANE
CONNECTORS



Z-PACK BACKPLANE
CONNECTORS

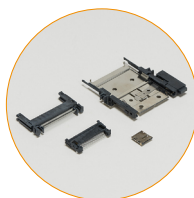
INPUT/OUTPUT (I/O)



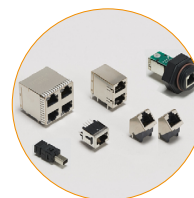
AMPLIMITE D-SUBMINIATURE
CONNECTORS



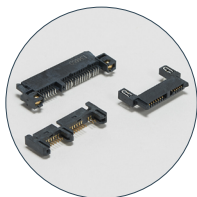
AUDIO & VIDEO
CONNECTORS



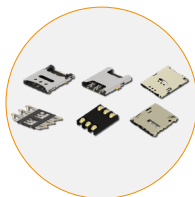
MEMORY CARD
CONNECTORS



MODULAR JACKS
& PLUGS



SATA & MICRO SATA
CONNECTORS



SIM CARD
CONNECTORS

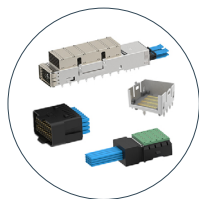


USB
CONNECTORS

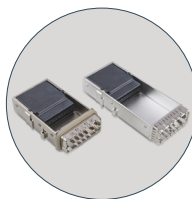
HIGH SPEED I/O



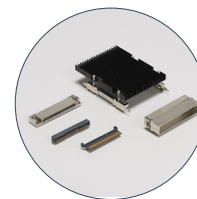
ACTIVE OPTICAL CABLE
ASSEMBLIES



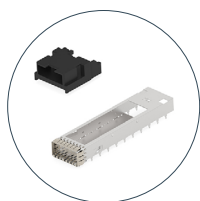
ADRENALINE 224G
PRODUCT PORTFOLIO



CDFP
PORTFOLIO



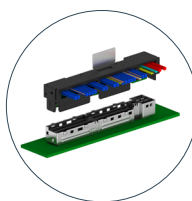
CFP, CFP2 & CFP4
PORTFOLIO



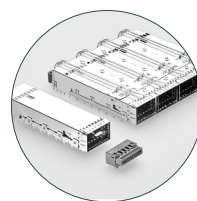
ELSFP (EXTERNAL LASER
SMALL FORM-FACTOR
PLUGGABLE) PORTFOLIO



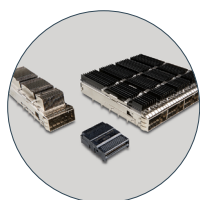
MCIO (MINI COOL EDGE
I/O) PORTFOLIO



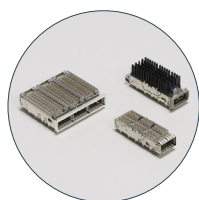
M-XIO (MODULAR
EXTENSIBLE I/O)
PORTFOLIO



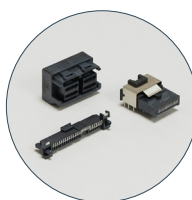
QSFP
PORTFOLIO



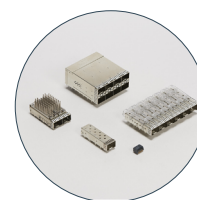
QSFP, QSFP+, & ZQSFP+
PORTFOLIO



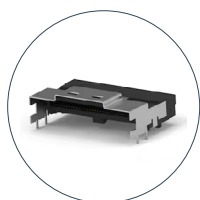
QSFP-DD
PORTFOLIO



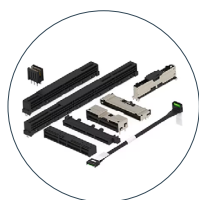
SAS AND MINI-SAS SCSI
CONNECTORS



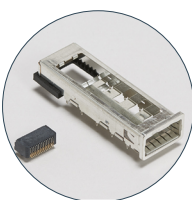
SFP, SFP+ & ZSFP
PORTFOLIO



SLIMSAS & SLIMSAS LP
PORTFOLIO



SLIVER CABLED
INTERCONNECT SYSTEM



XFP PORTFOLIO



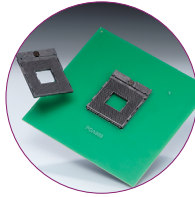
HIGH SPEED BACKPLANE
CONNECTORS



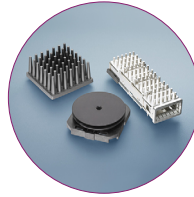
SOCKETS



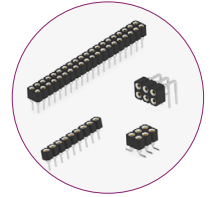
LAND GRID ARRAY (LGA)
PROCESSOR SOCKETS
AND HARDWARE



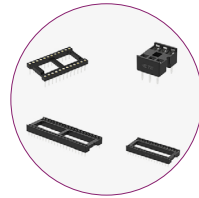
PIN GRID ARRAY (PGA)
PROCESSOR SOCKETS
AND HARDWARE



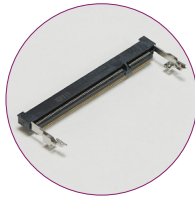
HEAT SINKS



SINGLE IN-LINE
PACKAGE (SIP)
SWITCH SOCKETS

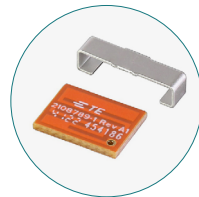


DUAL IN-LINE PACKAGE
(DIP) SWITCH SOCKETS



MEMORY SOCKETS

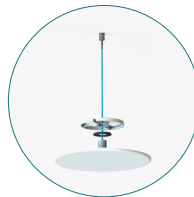
ANTENNAS



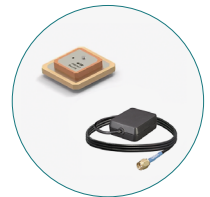
2.4 GHz ISM
ANTENNAS



CELLULAR
ANTENNAS



DISTRIBUTED ANTENNA
SYSTEM (DAS) ANTENNAS



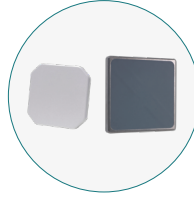
GNSS & GPS
ANTENNAS



ISM, LPWAN & LoRaWAN
ANTENNAS



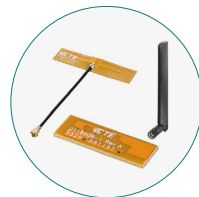
OUTDOOR
ANTENNAS



RFID
ANTENNAS



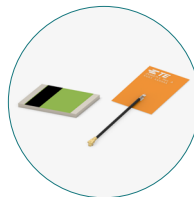
VEHICLE
ANTENNAS



WI-FI
ANTENNAS



NFC
ANTENNAS

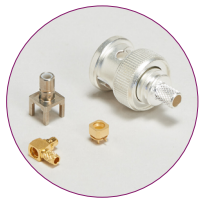


UWB
ANTENNAS



CUSTOM
ANTENNAS

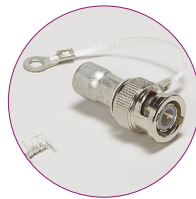
RF PRODUCTS



[RF CONNECTORS](#)



[RF MODULES](#)



[RF TERMINATORS](#)

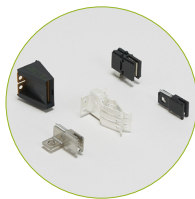


[RF CABLE
ASSEMBLIES](#)

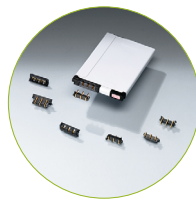
POWER



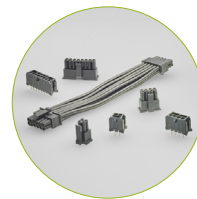
[BATTERY CONNECTORS
& HOLDERS](#)



[BUSBAR
CONNECTORS](#)



[DC JACK BATTERY
CONNECTORS](#)



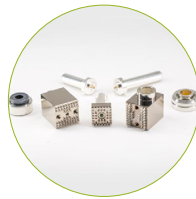
[ELCON CONNECTORS
AND CABLE ASSEMBLIES](#)



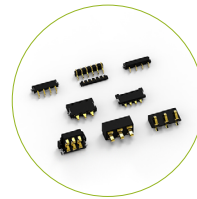
[ELCON DRAWER
CONNECTORS](#)



[HIGH DENSITY
CARD EDGE POWER
CONNECTORS](#)



[ICCON HIGH POWER
BLOCK & INSERT, PIN
AND SOCKET](#)



[MOBILE BATTERY
CONNECTORS](#)



[MULTI-BEAM XL, MULTI-
BEAM XLE, AND MULTI-
BEAM HD CONNECTORS](#)



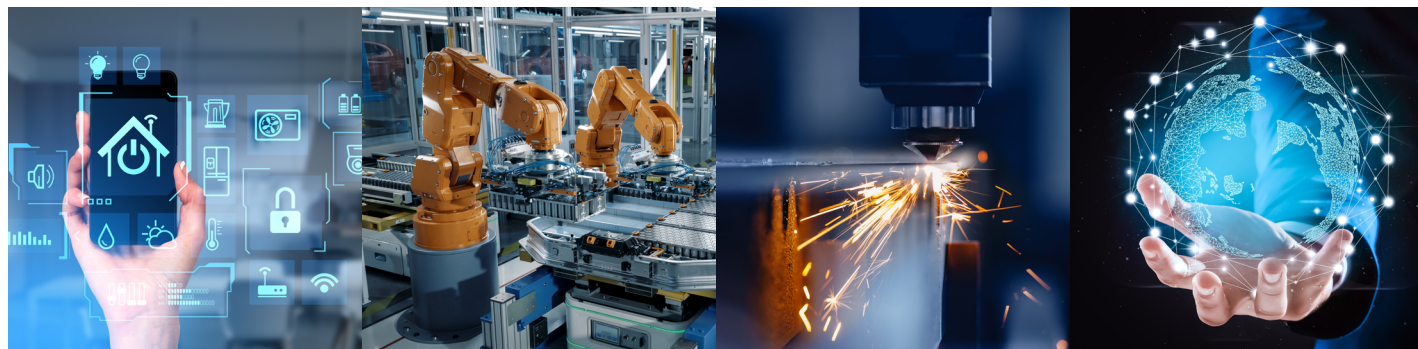
[OPEN COMPUTE
PROJECT COMPATIBLE
POWER SOLUTIONS](#)



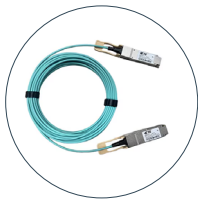
[RAPID LOCK POWER
CONNECTORS](#)



[WAVE CRIMP FLAT
COPPER POWER
CONNECTORS](#)



CABLE ASSEMBLIES



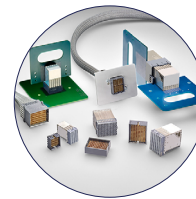
[ACTIVE OPTICAL CABLE
ASSEMBLIES](#)



[AMPLIMITE D-SUB CABLE
ASSEMBLIES](#)



[HIGH SPEED
BACKPLANE CABLE
ASSEMBLIES](#)



[HIGH SPEED
INTERNAL I/O CABLE
ASSEMBLIES](#)



[HIGH SPEED
PLUGGABLE I/O
CABLE ASSEMBLIES](#)

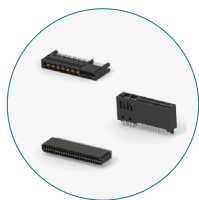


[RF CABLE
ASSEMBLIES](#)

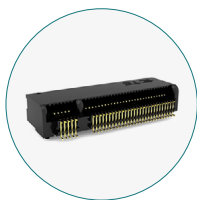


[VIRTUAL REALITY \(VR\)
CABLE ASSEMBLIES](#)

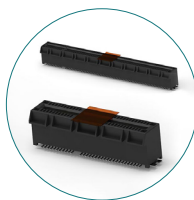
CARD EDGE CONNECTORS



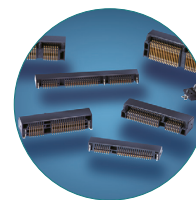
[CARD EDGE POWER
CONNECTORS](#)



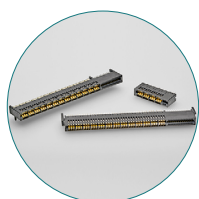
[M.2 NGFF
CONNECTORS](#)



[PCI & PCI EXPRESS
\(PCIe\) CONNECTORS](#)



[MINI PCIE/mSATA
CONNECTORS](#)



[MULTI-BEAM CARD EDGE
CONNECTORS](#)

te.com

AMP-LATCH, CHAMP, AMP, AMPLIMITE, MICTOR, Z-PACK, MULTI-BEAM HD, MULTI-BEAM XLE, MULTI-BEAM XL, RAPID LOCK, ELCON, ICCON, STRADA Whisper, TE, TE Connectivity, TE connectivity (logo), ADRENALINE, SLIVER, ERNI, ERMET and EVERY CONNECTION COUNTS are trademarks owned or licensed by the TE Connectivity plc family of companies. Other product names, logos, and company names mentioned herein may be trademarks of their respective owners.

The information given herein, including drawings, illustrations and schematics which are intended for illustration purposes only, is believed to be reliable. However, TE Connectivity makes no warranties as to its accuracy or completeness and disclaims any liability in connection with its use. Antenna performance may vary. TE is a component manufacturer, and customer and/or end-user is responsible for all end-use compliance and regulatory requirements. TE Connectivity's obligations shall only be as set forth in TE Connectivity's Standard Terms and Conditions of Sale for this product and in no case will TE Connectivity be liable for any incidental, indirect or consequential damages arising out of the sale, resale, use or misuse of the product. Users of TE Connectivity products should make their own evaluation to determine the suitability of each such product for the specific application.

© 2025 TE Connectivity. All Rights Reserved.

04-25