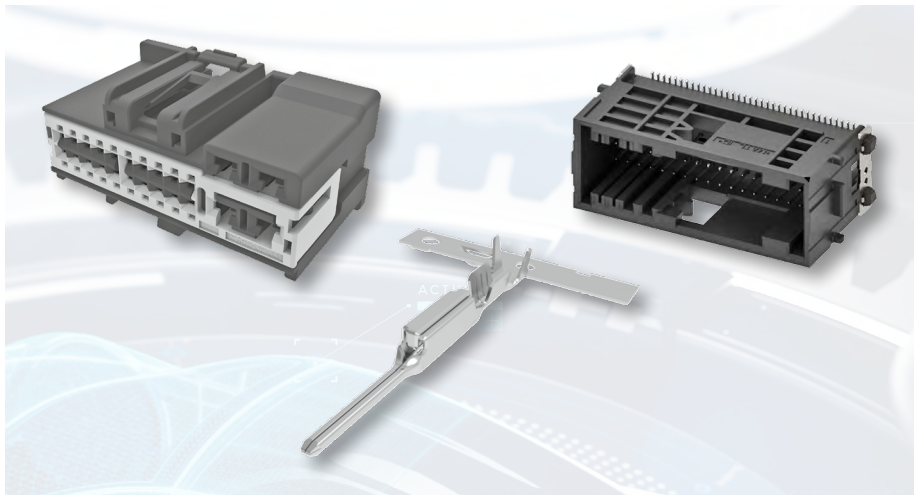


GENERATION Y CONNECTOR SYSTEM

For the Automotive Industry

PRODUCT CATALOG



INNOVATIVE TECHNOLOGIES

TE Connectivity (TE) is a leader in automotive connectivity and sensor technology. Our engineers are always working to meet complex requirements. We connect nearly every electronic function in the vehicle – from alternative power systems to data connectivity and sensor technologies. Our technologies withstand harsh environments and tolerate high temperature, vibration, shock, pressure and long-life in electronic control systems.



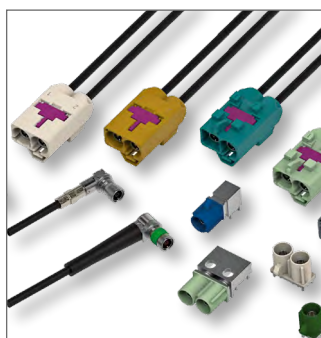
INTERCONNECTION SYSTEMS

Our electrical and electronic interconnection products and solutions are used to electrically and mechanically connect wires and cables, printed circuit boards, integrated circuit packages, batteries and more.



HYBRID & ELECTRIC MOBILITY SOLUTIONS

Our technologies leverage decades of innovation and experience with high-voltage transmission and distribution. Our hybrid and electric mobility solutions include a complete line of connectors, terminals, sensors, cable assemblies, contactors, and battery connection protection to help safeguard the flow of power in hybrid and electric vehicles.



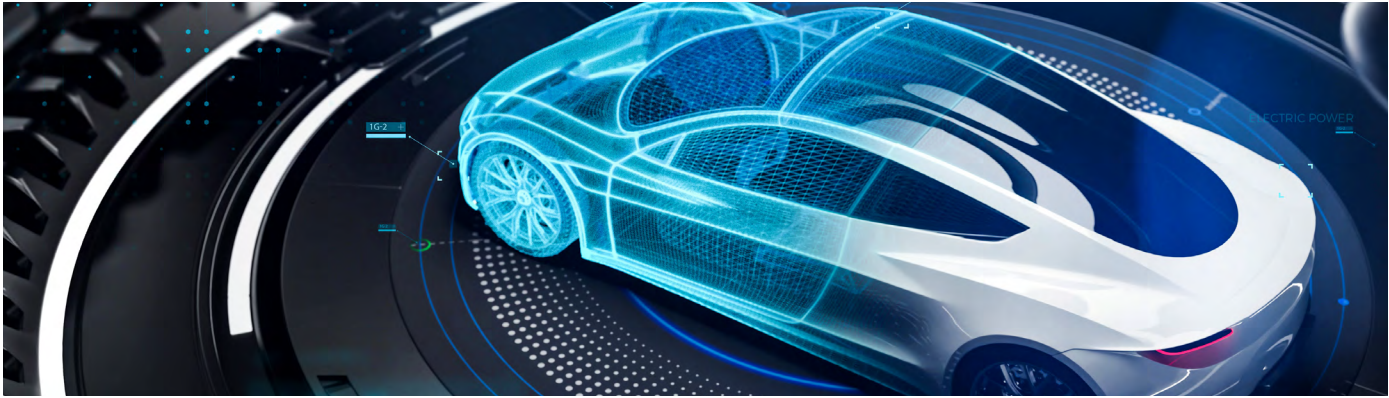
DATA CONNECTIVITY

Our wide range of data connectivity solutions are ideal for consumer port connections, high data rate applications, next-generation harness architecture, board-to-board connections and vehicle-to-vehicle communication.



WIRELESS

HIRSCHMANN MOBILITY wireless solutions enable high-performance signal reception and transmission for vehicles. We offer customized antenna systems as well as radio tuner systems for all common global standards. Together with the TE connectors solutions we provide one-stop-connectivity solutions with components along the signal chain that are optimized and compatible with each other to provide excellent signal quality and real-time data.



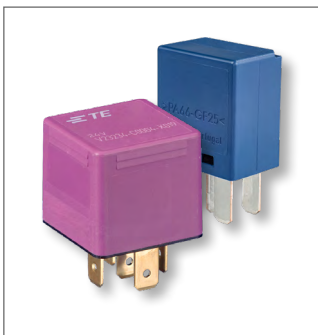
SENSOR SOLUTIONS

Customers rely on our sensor technology to provide data for control, adaptation and response of vehicle functions and features that increase safety, comfort, efficiency, and more. We collaborate to provide solutions for demanding and harsh applications such as automated transmissions, engines, chassis, clutch, brake and exhaust. Our products can be found in vehicles traveling the world's roads and highways.



CABLE ASSEMBLY

TE is your partner for vehicle-specific cable assemblies. We offer research and development capabilities, prototypes and samples, as well as manufacturing facilities.



RELAYS

From passenger comfort and infotainment to higher DC voltages and power levels to harsh environments, our relays and contactors provide critical switching functions in multiple vehicle applications. With increased contact gaps and other key design features, our relays are ideal for harsh environments such as shock and vibration.



APPLICATION TOOLING

Ensuring a quality connection is essential to delivering high performance and reliability in extreme environments. From crimping a terminal onto a wire or pressing a connector onto a board, our equipment and services are designed to maximize production uptime, extend tooling life and minimize manufacturing waste.

GENERATION Y CONNECTOR SYSTEM

Introduction	9
--------------	-------------------

1 CONTACTS

Female Receptacle Contacts (Sealed and Unsealed Applications)	10
Female Receptacle Contacts (Unsealed Applications Only)	11
Female Receptacle Contacts (Sealed and Unsealed 2.54 Centerline Applications)	12
Female Receptacle Contacts (Sealed Applications)	13
Male Tab Terminal (0.64 x 0.80 mm Wire-to-Wire Blade Sealed and Unsealed Applications)	14

2 HOUSINGS & CONNECTORS**Unsealed Connector System**

2 Position Unsealed Female Plug	15
2 Position Unsealed Male Cap	16
4 Position (1 x 4) Female Plug	17
4 Position (1 x 4) Male Cap	18
6 Position (1 x 6) Female Plug	19
6 Position (2 x 3) Unsealed Plug Assembly	20
10 Position (1 x 10) Female Plug	21
14 Position Splice Plug	22
16 Position Unsealed Plug Assembly	23
20 Position (2 x 10) Single Piece Plug	24
20 Position (2 x 10) Plug Assembly	25
22 Position (2 x 11) Female Plug	26
22 Position (2 x 11) Male Cap	27

Unsealed Hybrid Connector System

4 Position (2 x 0.64, 2 x 2.8 mm) Unsealed Hybrid Plug Housing	28
4 Position Unsealed Hybrid Connector Assembly	29
8 Position Hybrid 0.64 mm / 2.8 mm Connector	30
10 Position Unsealed Inline Female Plug	31
10 Position Unsealed Inline Male Cap	32
13 Position Unsealed Inline Female Plug	33
13 Position Unsealed Inline Male Cap	34
13 Position Unsealed Connector System (Hybrid 0.64 mm / 2.8 mm Connector)	35
21 Position Unsealed Connector System (Hybrid 0.64 mm / 2.8 mm Connector)	36

GENERATION Y CONNECTOR SYSTEM**2 HOUSINGS & CONNECTORS****Unsealed Hybrid Connector System** (continued)

22 (20 x 0.64, 2 x 2.8 mm) Position Plug Assembly	37
24 Position Unsealed Hybrid Plug	38
24 Position Unsealed Inline Male Plug	39
24 Position Unsealed Inline Female Plug	40
32 Position Hybrid Unsealed Plug Assembly	41
50 Position Unsealed Hybrid Plug Assembly	42
50 Position Protection Cap	43
72 Position Unsealed Hybrid Plug Assembly	44
72 Position Protection Cap	45

Sealed Connector System

6 Position Sealed Connector System	46
7 Position Sealed Connector System (Hybrid 0.64 mm / 2.8 mm Connector)	47
10 (2 x 5) Position Plug Assembly	48
68 Position Sealed Inline Male Cap	49
68 Position Sealed Inline Female Plug	50
90 Position Unsealed Hybrid Plug Assembly	51
90 and 112 Position Wire Cover	52
112 Position Unsealed Hybrid Plug Assembly	53

3 TERMINAL CARRIERS

Terminal Carriers	54
-------------------	--------------------

4 UNSEALED SHIELD ASSEMBLIES

26 Position Shield with Integrated Wire Routing	55
32 Position Hand Mate Shield	56
40 Position LAC Shield with Integrated Wire Routing	57
52 Position Lever Assist Connector (LAC) Shield with Integrated Wire Routing	58
54 Position Lever Assist Connector (LAC) Shield with Integrated Wire Routing	59

GENERATION Y CONNECTOR SYSTEM**5 UNSEALED PCB HEADERS**

8 Position Hybrid Header, unsealed	60
16 Position Vertical Header, unsealed	61
26 Position RA SMT Header, unsealed	62
26 Position Vertical SMT Header, unsealed	63
32 Position Vertical SMT Header, unsealed	64
54 Position Vertical SMT Header, unsealed	65
24 Position Hybrid Press-Fit Header, right-angle, unsealed	66
44 Position Hybrid Press-Fit Header, right-angle, unsealed	67

6 LOW CURRENT HIGH VOLTAGE CONNECTORS

Introduction	69
10 Position Vertical Header	70
18 Position Vertical Header	71
10 Position Plug Assembly, unsealed	72
18 Position Plug Assembly, unsealed	73
22 Position Inline Male Cap, unsealed	74
22 Position Inline Female Plug, unsealed	75

7 APPLICATION TOOLING[**77**](#)

TE Connectivity online	78
Global Contacts	79
Imprint	79



GENERATION Y CONNECTOR SYSTEM

Product Highlights

- Generation Y connector system offers a low engagement force 0.64 mm terminal system
- Sealed and unsealed; wire-to-wire, wire-to-board; wire-to-device; hand mate and lever assist
- Compact design and packaging to reduce complexity and cost

Automotive Applications

- Unsealed wire-to-device for power lift gate modules, junction box and instrument panel
- Sealed connectors for rear camera application and smart window motor
- Unsealed wire-to-board used for power inverters, multi-media modules, climate control modules
- Lever assist connectors for use in multi-media modules, body control and smart junction box modules

Product Features

- Sealed and unsealed connectors for use in cabin or engine applications
- Low engagement force contact allows higher pin count with hand mate while meeting requirements of USCAR-25
- 2.2 mm centerline pitch capable to allow greater density to reduce PCB costs
- 0.64 mm/2.8 mm hybrid connectors provide power and signal in one package to reduce complexity and cost
- Off-the-shelf or application specific designs available
- Header materials available for IR resistance and leadfree solder processing
- One piece hinge-lock plug housing provides independent secondary locking of female terminal
- Header designs available with thru-hole solder tails, surface mount tabs or press fit compliant pin terminals
- Header designs available in vertical or right-angle; with or without boardlocks
- Sealed and unsealed connectors exceed performance requirements of USCAR-2, -20, -21 and -25 connector design and ergonomic standards

Technical Features

Terminal Bend Strength:

4 N load

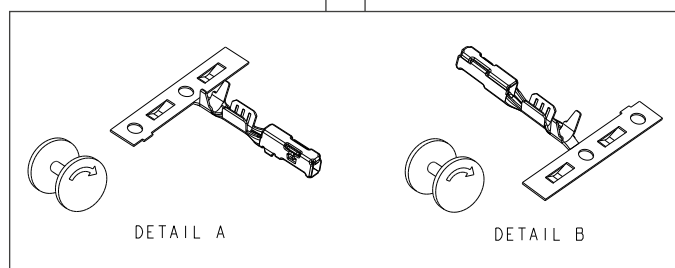
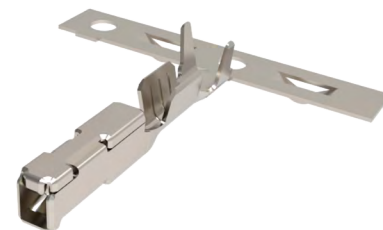
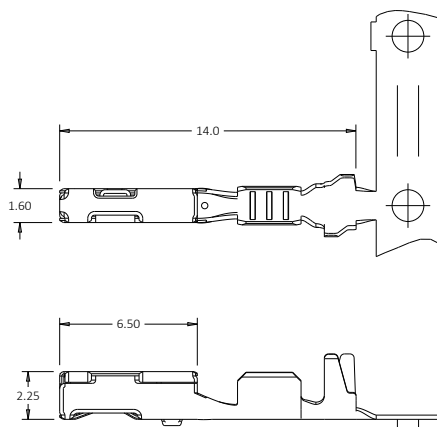
Maximum Current Rating:10.5 amps – 18 AWG,
30°C T-rise free air**Temperature Classification:**–40°C to +100°C (tin)
–40°C to +150°C (silver)**Vibration Class:**Body vibration (tin)
Engine vibration (silver)**Voltage Drop****(Initial Interface):**Voltage drop is 50mV after
environmental tests only.
Dry circuit resistance is
20 milliohms initial.**Product Specification:**

108-2296 (tin only)

Application Specification:

114-13183

Female Receptacle Contacts (Sealed and Unsealed Applications)



Bottom Orientation

Wire Size Range		Wire Insulation Diameter (mm)	Base Finish	Material	Part Number Receptacle Contact	Reeling Direction
mm ²	AWG					
0.13	26	0.85-1.05	Pre-Tin	Phosphor Bronze	2035334-5	Detail A
			Silver	CuNiSi	1456968-5	
0.35	22	1.10-1.40	Pre-Tin	Phosphor Bronze	2035334-6	
			Silver	CuNiSi	1456968-6	
0.35-0.50	20-22	1.50-1.85	Pre-Tin	Phosphor Bronze	2035334-1	
			Silver	CuNiSi	1456968-1	
0.75	18	1.60-2.06	Pre-Tin	Phosphor Bronze	2035334-2	Detail B *
			Silver	CuNiSi	1456968-2	
0.13	26	0.85-1.05	Pre-Tin	Phosphor Bronze	2035334-7	
			Silver	CuNiSi	1456968-7	
0.35	22	1.10-1.40	Pre-Tin	Phosphor Bronze	2035334-8	
			Silver	CuNiSi	1456968-8	
0.35-0.50	20-22	1.50-1.85	Pre-Tin	Phosphor Bronze	2035334-3	
			Silver	CuNiSi	1456968-3	
0.75	18	1.60-2.06	Pre-Tin	Phosphor Bronze	2035334-4	
			Silver	CuNiSi	1456968-4	

*) Reeled for TE Connectivity brand applicators.

Lubricant added to the connector mating end of receptacle provides reduced mating force and prevention of fretting corrosion.

Technical Features

Terminal Bend Strength:
4 N load

Maximum Current Rating:
10.5 amps – 18 AWG,
30°C T-rise free air

Temperature Classification:
–40°C to +100°C (tin)

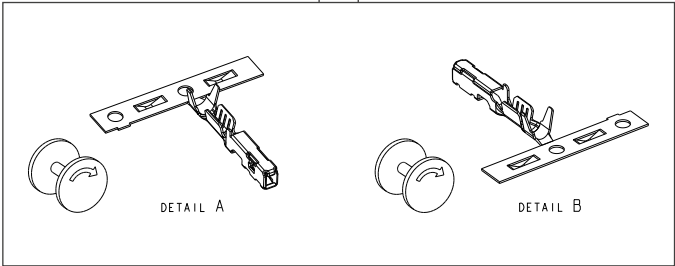
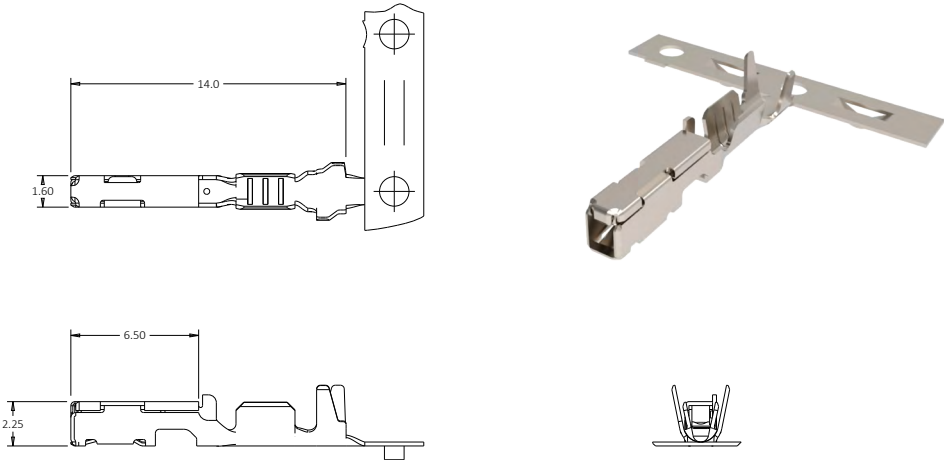
Vibration Class:
Body vibration (tin)

Voltage Drop (Initial Interface):
Voltage drop is 50mV after
environmental tests only.
Dry circuit resistance is
20 milliohms initial.

Product Specification:
108-2296

Application Specification:
114-13183

Female Receptacle Contacts (Unsealed Applications Only)



Top Flag Orientation

Wire Size Range		Wire Insulation Diameter (mm)	Base Finish	Material	Part Number Receptacle Contact	Reeling Direction	Hand Tool (408-10227)
mm²	AWG						
0.13	26	0.85-1.05	Pre-Tin	Phosphor Bronze	1924955-5	Detail A	-
0.35	22	1.10-1.40			1924955-6		-
0.35-0.50	20-22	1.50-1.85			1924955-1		-
0.75	18	1.60-2.06			1924955-2		-
0.13	26	0.85-1.05	Pre-Tin	Phosphor Bronze	1924955-7	Detail B *	-
0.35	22	1.10-1.40			1924955-8		-
0.35-0.50	20-22	1.50-1.85			1924955-3		2063291-1
0.75	18	1.60-2.06			1924955-4		2063291-1

*) Reeled for TE Connectivity brand applicators.
Lubricant added to the connector mating end of receptacle provides reduced mating force and prevention of fretting corrosion.

Technical Features

Terminal Bend Strength:

4 N load

Temperature Classification:

-40°C to +125°C (tin)

Vibration (per GMW3191, V1):

Body Vibration

Voltage Drop**(Initial Interface):**

Voltage drop is 50mV after environmental tests only.
Dry circuit resistance is 20 milliohms initial.

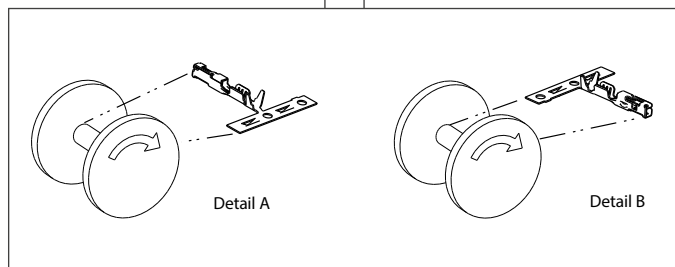
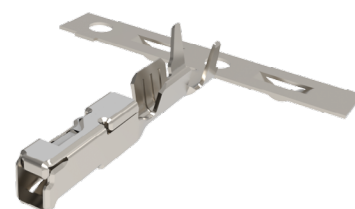
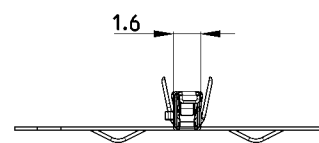
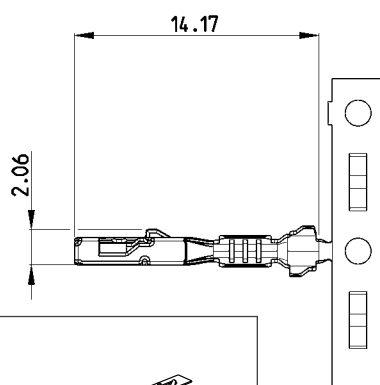
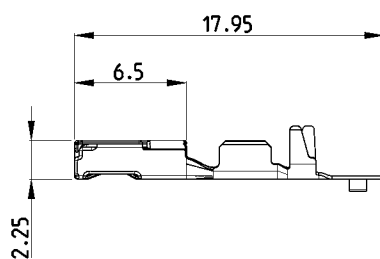
Product Specification:

N/A

Application Specification:

114-13183

Female Receptacle Contacts (Sealed and Unsealed 2.54 Centerline Applications)



Side Orientation

Wire Size Range		Wire Insulation Diameter (mm)	Base Finish	Material	Part Number Receptacle Contact	Reeling Direction
mm ²	AWG					
0.35-0.50	20-22	1.50-1.85	Pre-Tin	CuNiSi	2035170-1	Detail A *
0.75	18	1.60-2.06			2035170-2	
0.35-0.50	20-22	1.50-1.85	Pre-Tin	CuNiSi	2035170-5	Detail B
0.75	18	1.60-2.06			2035170-6	
0.35-0.50	20-22	1.50-1.85	Pre-Tin	CuNiSi	2098165-1 **	Detail A *
0.75	18	1.60-2.06			2098165-2 **	
0.35-0.50	20-22	1.50-1.85	Pre-Tin	CuNiSi	2098165-3 **	Detail B
0.75	18	1.60-2.06			2098165-4 **	

*) Reeled for TE Connectivity brand applicators.

**) High Normal Force (350 g)

Lubricant added to the connector mating end of receptacle provides reduced mating force and prevention of fretting corrosion.

Technical Features

Terminal Bend Strength:
4 N Load

Temperature Classification:
125°C (tin)

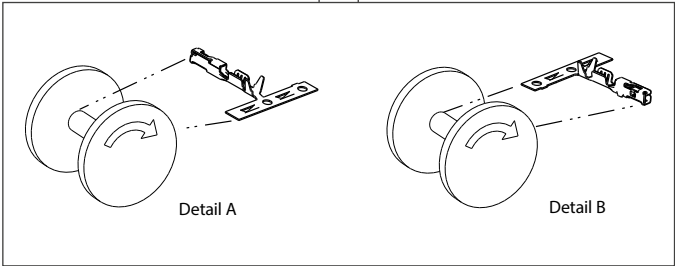
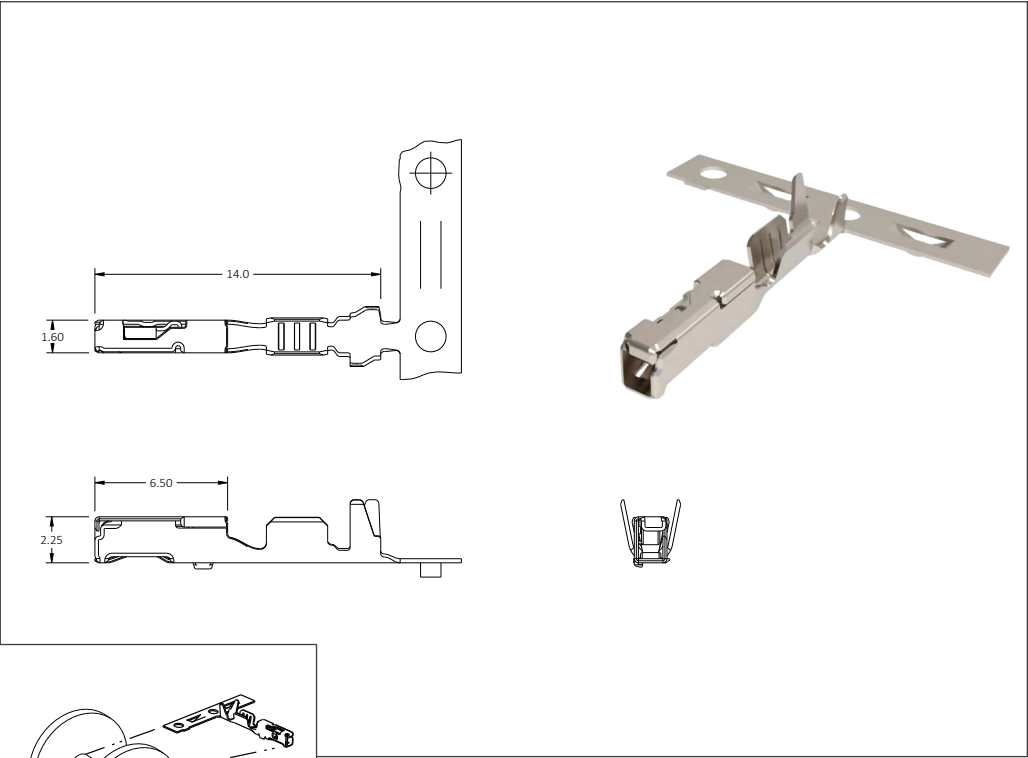
Vibration Class:
Chassis (V1)

Voltage Drop (Initial Interface):
Voltage drop is 50mV after environmental tests only.
Dry circuit resistance is 20 milliohms initial.

Product Specification:
108-2296

Application Specification:
114-13183

Female Receptacle Contacts (Sealed Applications)



Female Receptacle Contacts

Wire Size Range		Wire Insulation Diameter (mm)	Base Finish	Material	Part Number Receptacle Contact	Reeling Direction
mm²	AWG					
0.35-0.50	20-22	1.50-1.85	Pre-Tin	CuNiSi	2098762-1	Detail A *
0.75	18	2.06 max			2098762-2	
0.13	26	0.85-1.05			2098762-3	
0.35	22	1.10-1.40			2098762-4	
0.35-0.50	20-22	1.50-1.85	Pre-Tin	CuNiSi	2098762-5	Detail B
0.75	18	2.06 max			2098762-6	
0.13	26	0.85-1.05			2098762-7	
0.35	22	1.10-1.40			2098762-8	

*) Reeled for TE Connectivity brand applicators.
Lubricant added to the connector mating end of receptacle provides reduced mating force and prevention of fretting corrosion.

Technical Features**Terminal Bend Strength:**

4 N load

Maximum Current Rating:9.0 amps – 18 AWG,
30°C T-rise free air**Temperature Classification:**

–40°C to +100°C (tin)

Vibration Class:

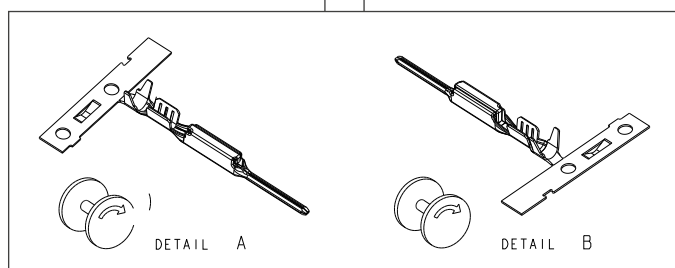
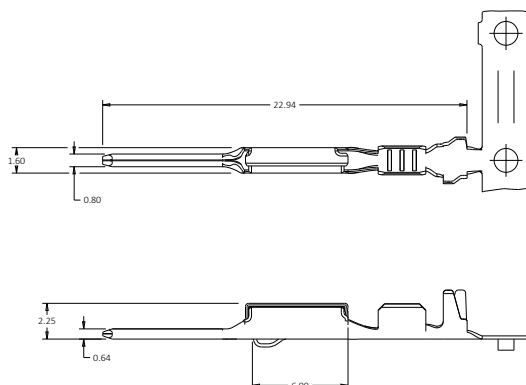
Body vibration

Voltage Drop**(Initial Interface):**Voltage drop is 50mV after
environmental tests only.
Dry circuit resistance is
20 milliohms initial.**Product Specification:**

108-2296-1

Application Specification:

114-13183

Male tab contacts (0.64 x 0.80 mm Wire-to-Wire Blade Sealed and Unsealed Applications)**Receptacle Contacts**

Wire Size Range		Wire Insulation Diameter (mm)	Base Finish	Material	Part Number Male Tab Contact	Reeling Direction	Hand Tool (408-10227)
mm ²	AWG						
0.13	26	0.85-1.05	Pre-Tin	-	1924968-5	Detail A	-
0.35	22	1.10-1.40			1924968-6		-
0.35-0.50	20-22	1.50-1.85			1924968-1		-
0.75	18	1.60-2.06			1924968-2		-
0.13	26	0.85-1.05	Pre-Tin	-	1924968-7	Detail B *	-
0.35	22	1.10-1.40			1924968-8		-
0.35-0.50	20-22	1.50-1.85			1924968-3		2063291-1
0.75	18	1.60-2.06			1924968-4		2063291-1

*) Reeled for TE Connectivity brand applicators.

Lubricant added to the connector mating end of receptacle provides reduced mating force and prevention of fretting corrosion.

Technical Features

No. of Positions:
2

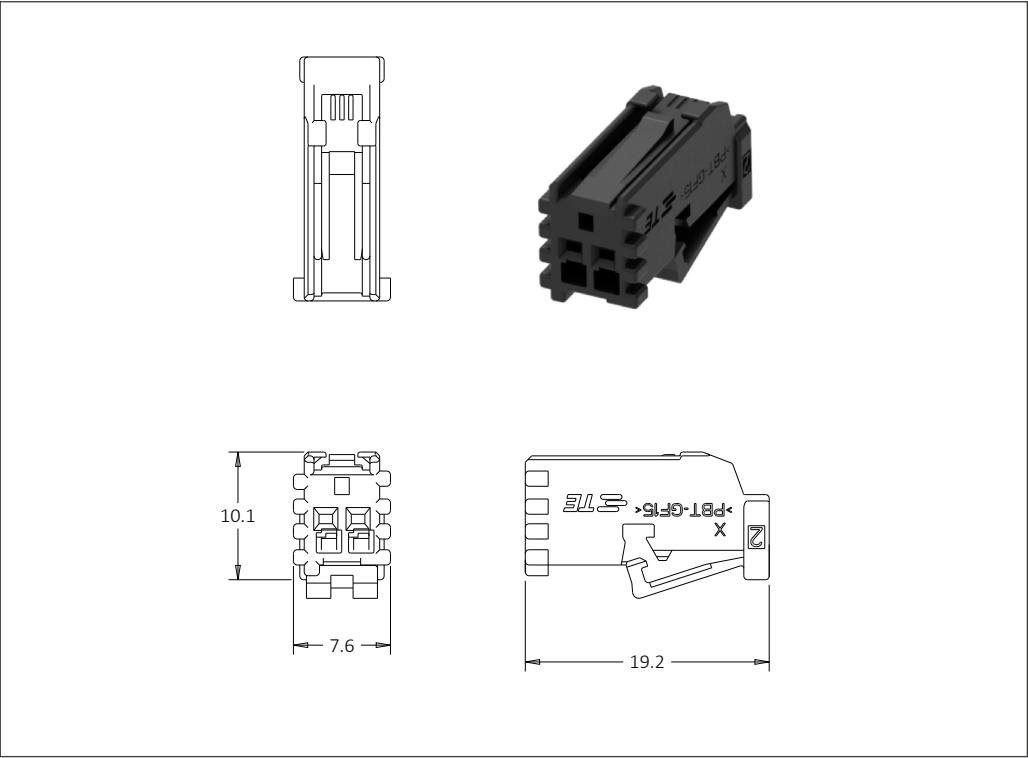
Housing Materials:
Glass filled PBT

Wire Size Range:
18-26 AWG

Instruction Sheet:
408-32069

- Notes
- Accepts TE Connectivity Generation Y 0.64 mm bottom orientation receptacle contact only (2098762)
 - Mates with cap housing 2138558

2 Position Unsealed Female Plug



Inline Female Plug

No. of Positions	Key Options	Housing Color	Part Numbers				
			Receptacle Housing	Cover	Mating Pin Housing	Mating PCB Header	
						Right-Angle	Vertical
2	Black	A	2386146-1	-	2138558-1	-	-
	Gray	B	2386146-2	-	2138558-2	-	-

Technical Features

No. of Positions:

2

Housing Material:

Glass filled PBT

Wire Size Range:

18-26 AWG

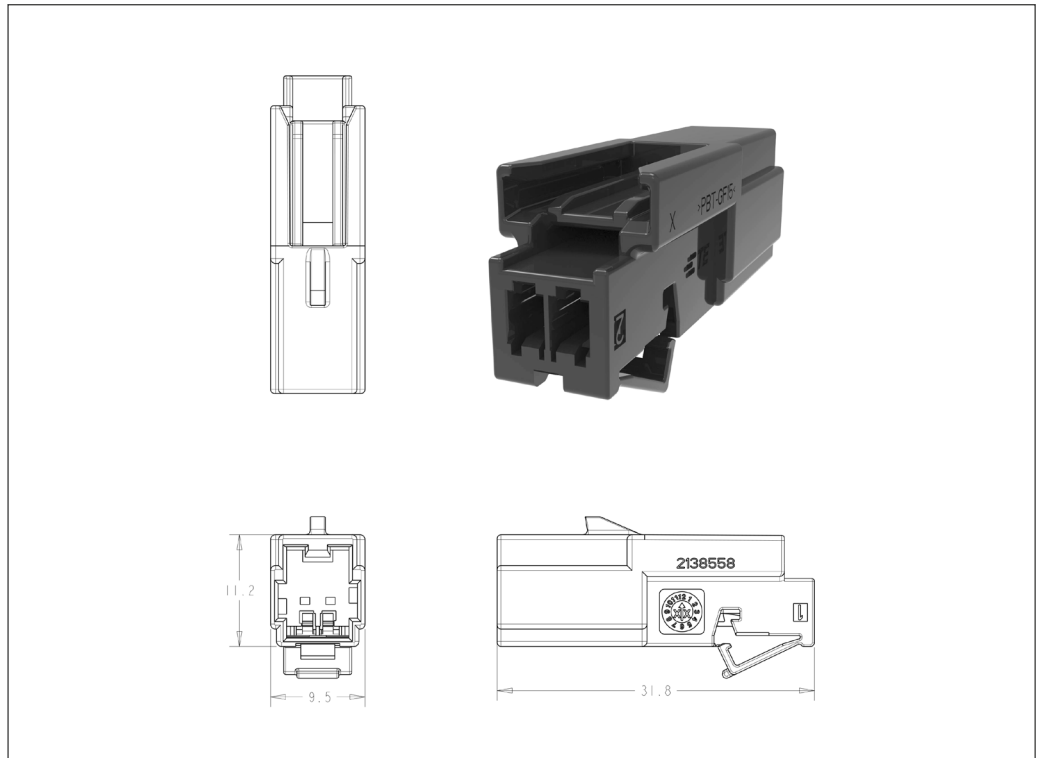
Instruction Sheet:

408-32069

Notes

- Accepts TE Connectivity Generation Y 0.64 mm male pin contact only (1924968)
- Mates with plug housing 2386146
- EWCAP_001 clip slot

2 Position Unsealed Male Cap



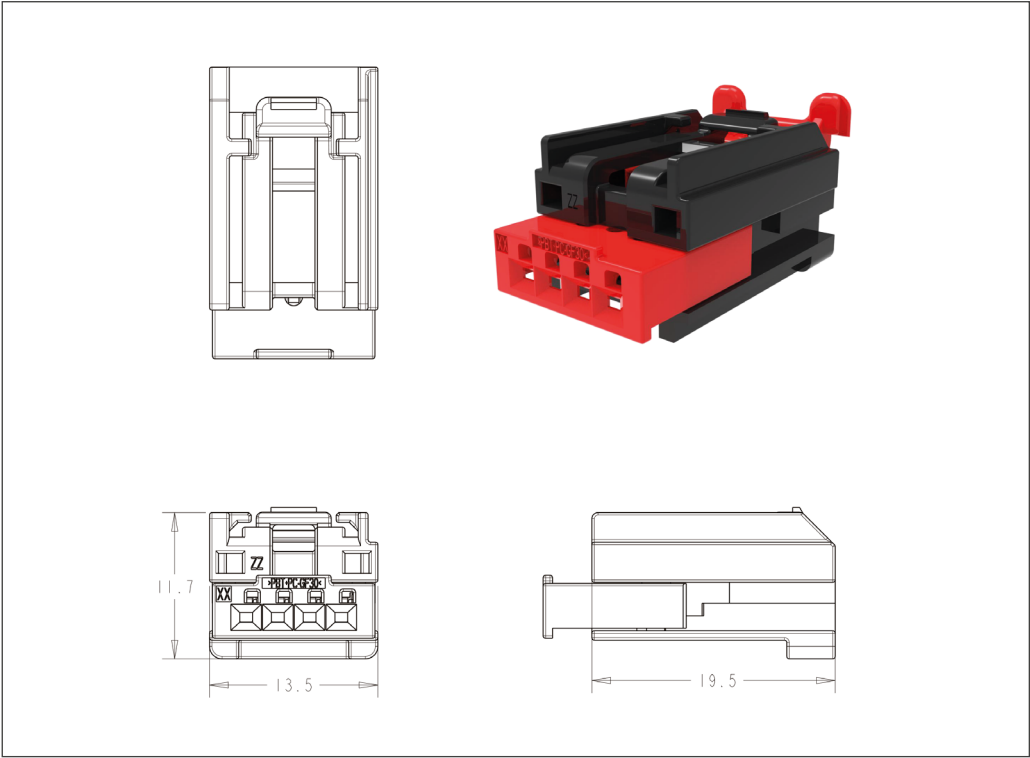
Inline Male Cap

No. of Positions	Key Options	Housing Color	Part Numbers				
			Receptacle Housing	Clip Slot	Mating Pin Housing	Mating PCB Header	
						Right-Angle	Vertical
2	Black	A	2138558-1	Yes	2386146-1	-	-
	Gray	B	2138558-2	Yes	2386146-2	-	-
	Black	A	2138558-3	No	2386146-1	-	-
	Gray	B	2138558-4	No	2386146-2	-	-

Technical Features

- No. of Positions:
4
- Housing Material:
Glass filled PBT
- Wire Size Range:
18-26 AWG
- Instruction Sheet:
408-32052
- Notes
 - Generation Y 0.64 mm receptacle contact 1924955
 - Mates with pin housing 2203535

4 Position (1 x 4) Female Plug



Female Plug

No. of Positions	Key Options	Housing Color	CPA	Part Numbers				
				Receptacle Housing	Cover	Mating Pin Housing	Mating PCB Header	
							Right-Angle	Vertical
4	A	Black	No	2035360-1	-	2203535-1	-	-
	A	Black	Yes	2035360-2	-	2203535-1	-	-
	B	Black	No	2035360-3	-	2203535-2	-	-
	B	Black	Yes	2035360-4	-	2203535-2	-	-
	C	Black	No	2035360-5	-	2203535-3	-	-
	C	Black	Yes	2035360-6	-	2203535-3	-	-
	D	Black	No	2035360-7	-	2203535-4	-	-
	D	Black	Yes	2035360-8	-	2203535-4	-	-
	B	Natural	No	2035360-9	-	2203535-2	-	-
	B	Natural	Yes	1-2035360-0	-	2203535-2	-	-

Technical Features

No. of Positions:

4 (1 x 4)

Housing Material:

Glass filled PBT

Wire Size Range:

18-26 AWG

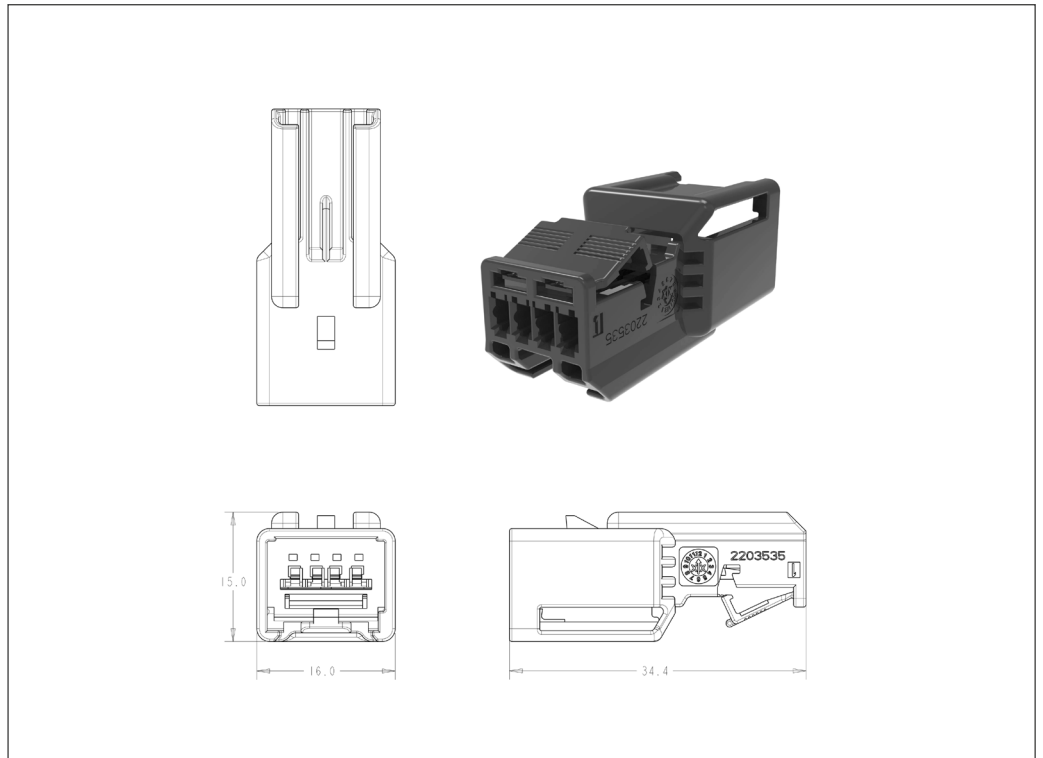
Instruction Sheet:

408-32069

Notes

- Accepts TE Connectivity's Generation Y 0.64 mm male pin contact (1924968)
- Clip Slot #: EWCAP-005-11

4 Position (1 x 4) Male Cap



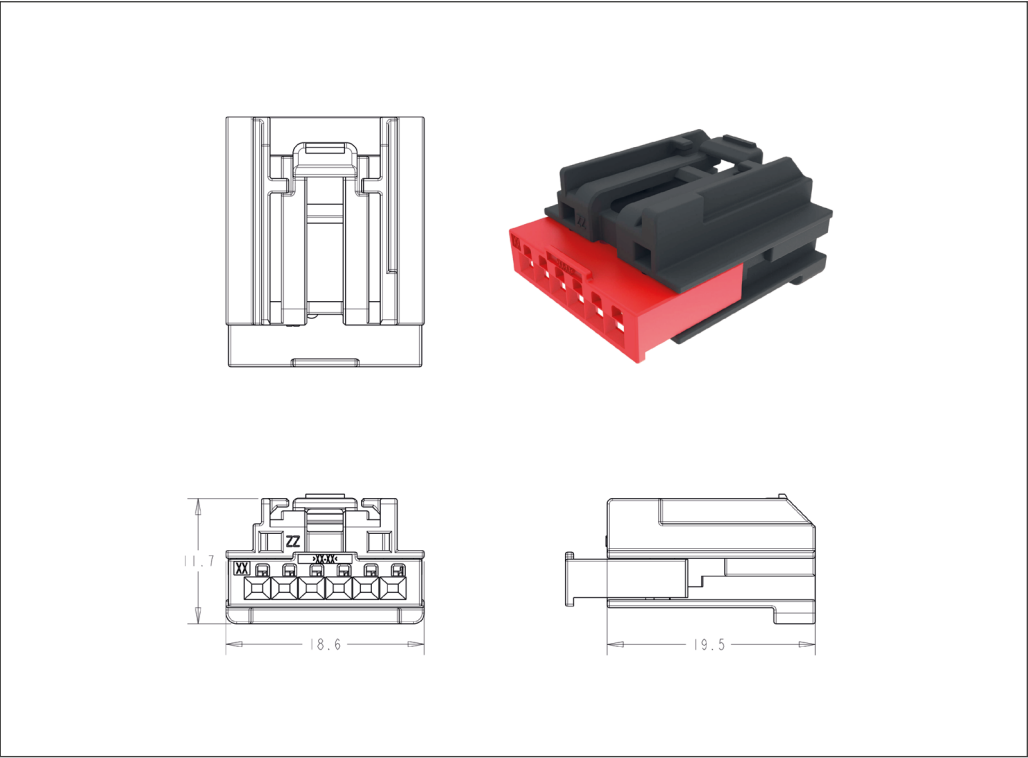
Inline Male Cap

No. of Positions	Key Options	Housing Color	Part Numbers	
			Male Housing	Mating Female Housing
4	A	Black	2203535-1	2035360-1
	B		2203535-1	2035360-1
	C		2203535-1	2035360-1
	D		2203535-1	2035360-1
	E		2203535-1	-
	F		2203535-1	-
	G		2203535-1	-
	H		2203535-1	-

Technical Features

- No. of Positions:
6 (1 x 6)
- Housing Material:
Glass filled Nylon
- Wire Size Range:
18-26 AWG
- Instruction Sheet:
408-32052
- Notes
 - Accepts TE Connectivity Generation Y 0.64 mm top orientation receptacle only (1924955)
 - Contains optional CPA

6 Position (1 x 6) Female Plug



Inline Female Plug

No. of Positions	Key Options	Housing Color	CPA	Part Numbers				
				Receptacle Housing	Cover	Mating Pin Housing	Mating PCB Header	
							Right-Angle	Vertical
6	F	Black	Yes	1-2035363-0	-	-	-	-
	B		No	2035363-1	-	-	-	-
	B		Yes	2035363-2	-	-	-	-
	C		No	2035363-3	-	-	-	-
	C		Yes	2035363-4	-	-	-	-
	D		No	2035363-5	-	-	-	-
	D		Yes	2035363-6	-	-	-	-
	E		No	2035363-7	-	-	-	-
	E		Yes	2035363-8	-	-	-	-
	F		No	2035363-9	-	-	-	-

Technical Features

No. of Positions:

6 (2 x 3)

Housing Materials:

Glass filled Nylon

Wire Size Range:

18-26 AWG

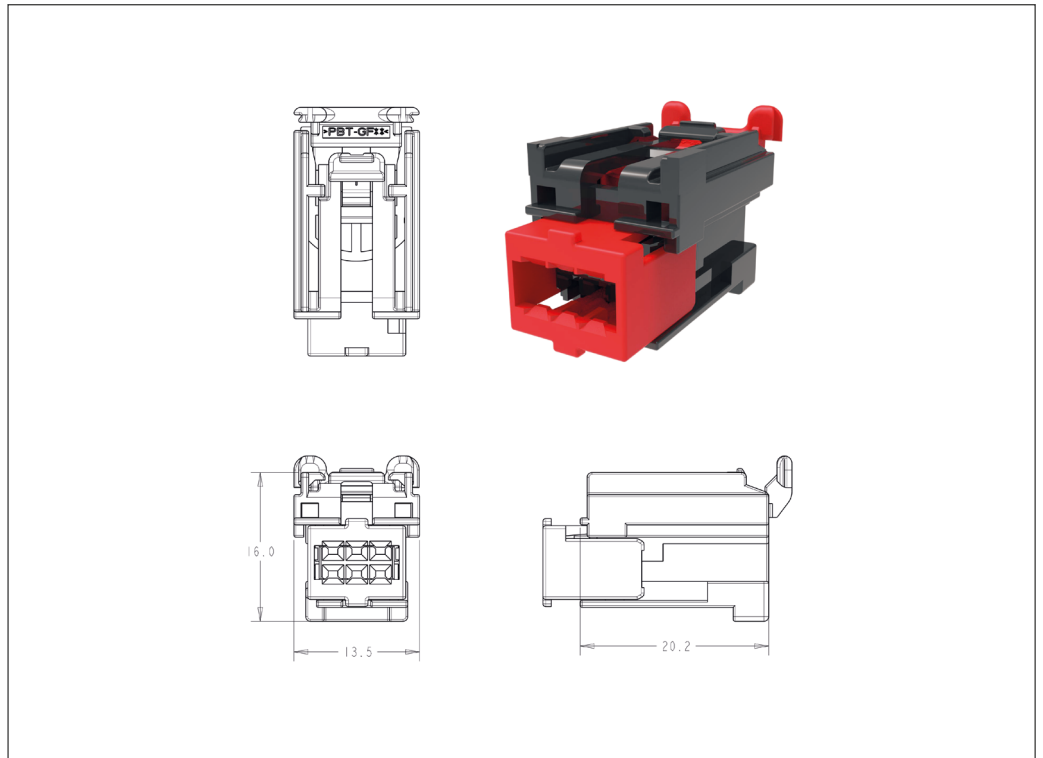
Application Specification:

114-9442

Notes

- Accepts TE Connectivity Generation Y 0.64 mm bottom orientation receptacle contact (2035334) and top orientation receptacle contact (1924955)

6 Position (2 x 3) Unsealed Plug Assembly



Female Plug

No. of Positions	Key Options	Housing Color	Part Numbers			
			Receptacle Housing	Mating Pin Housing	Mating PCB Header	
					Right-Angle	Vertical
6	A	Black	2208798-5	-	-	-
	B	Black	2208798-6	-	-	-
	C	Brown	1-2208798-3	-	-	-
	E	Black	9-2208798-5	-	-	-

Technical Features

No. of Positions:
10

Housing Materials:
Glass filled Nylon

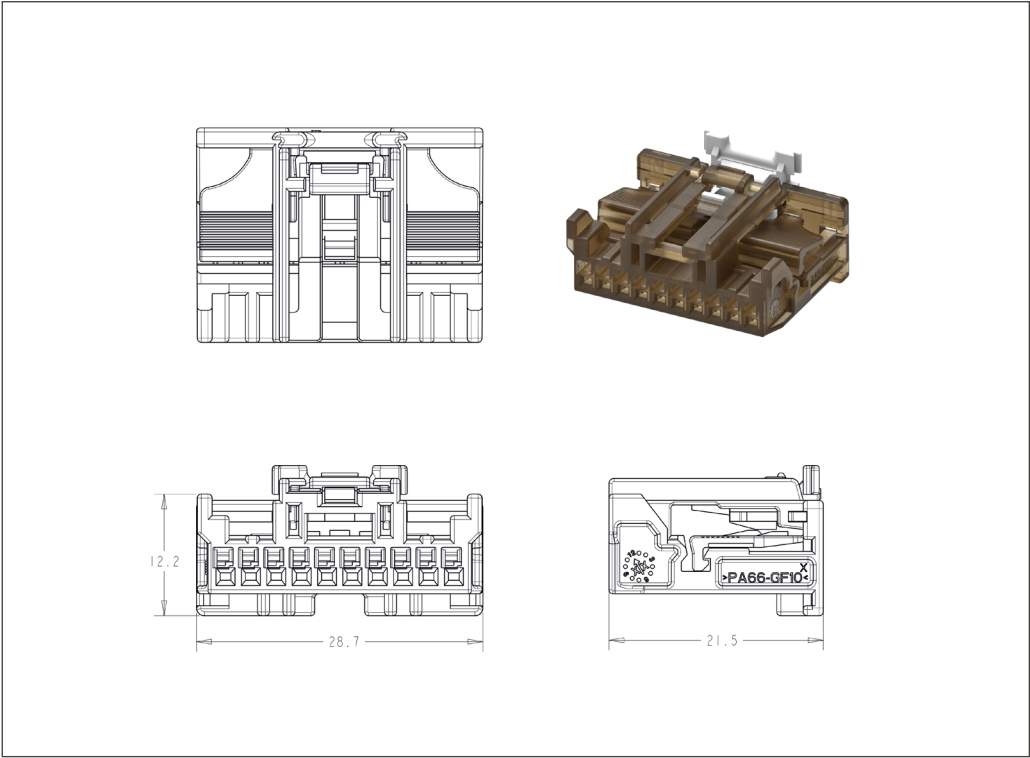
Wire Size Range:
8-26 AWG

Instruction Sheet:
408-32069

Mating USCAR Interface:
064-U-010-1-Z04

- Notes**
- Accepts TE Connectivity Generation Y 0.64 mm side orientation receptacle contact only (2035170) for environment T3 and below (2098165) for environments with a rating of transmission specific environments with a temperature rating of T3.

10 Position (1 x 10) Female Plug



Female Plug

No. of Positions	Key Options	Housing Color	Part Numbers				
			Receptacle Housing	CPA	Mating Pin Housing	Mating PCB Header	
						Right-Angle	Vertical
10	A	Brown	2291594-1	Yes	-	-	-
			2291593-1	No	-	-	-

Technical Features

No. of Positions:

14

Housing Materials:

Glass filled PBT

Wire Size Range:

18-22 AWG

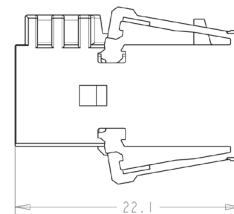
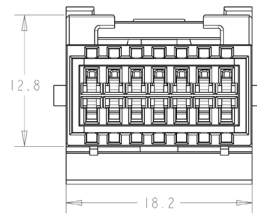
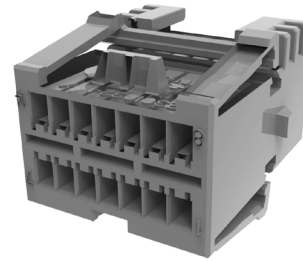
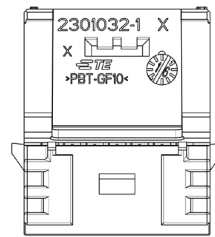
Application Specification:

114-94450

Notes

- Accepts TE Connectivity Generation Y 0.64 mm top orientation receptacle contact (1924955)
- Mates with 2301033 cap
- Other pin counts can be tooled on request

14 Position Splice Plug



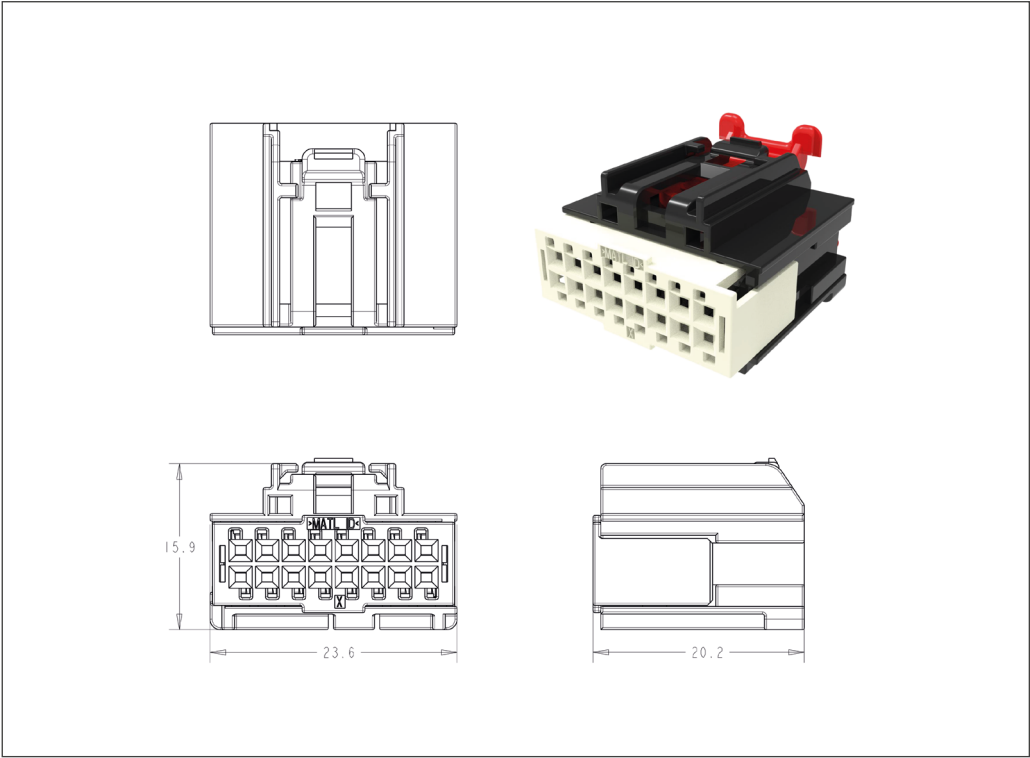
Female Plug

No. of Positions	Key Options	Housing Color	Part Numbers				
			Receptacle Housing	Cover	Mating Pin Housing	Mating PCB Header	
						Right-Angle	Vertical
14	A	Gray	2301029-3	2301033-1			
	B	Brown	2301029-4	2301033-1	-	-	-

Technical Features

- No. of Positions:
16
- Housing Materials:
Glass filled Nylon
- Notes
 - Accepts TE Connectivity Generation Y 0.64 mm bottom orientation receptacle contact (2035334) or top orientation receptacle contact (1924955)

16 Position Unsealed Plug Assembly



Female Plug

No. of Positions	Key Options	Housing Color	Part Numbers				
			Receptacle Housing	Cover	Mating Pin Housing	Mating PCB Header	
						Right-Angle	Vertical
16	C	Black	1456867-3	-	-	-	1456819-3
	D		1456867-4	-	-	-	-
	E		1456867-5	-	-	-	-
	F		1456867-6	-	-	-	-
	G		1456867-7	-	-	-	-
	H		1456867-8	-	-	-	-

Technical Features

No of Positions:

20 (2 x 10) Positions

Housing Materials:

Plug: Glass filled PBT

Wire Size Range:

18-26 AWG

Instructions Sheet:

408-32069

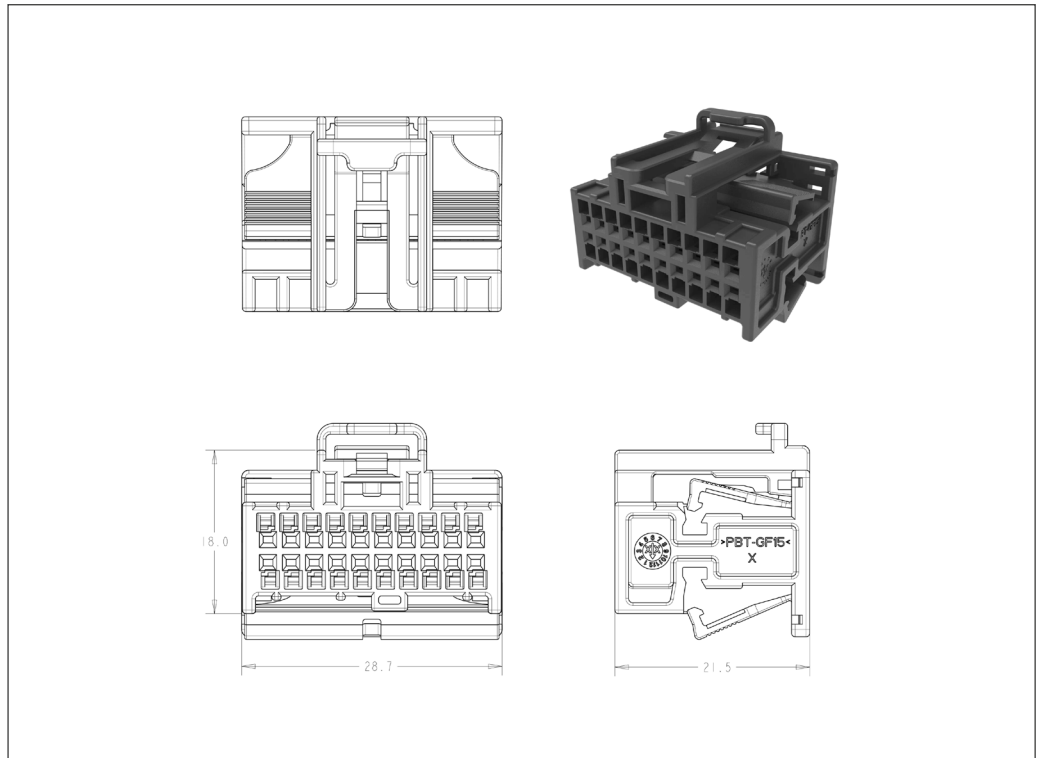
Application Specification:

114-13183

Note

- Accepts TE Connectivity Generation Y 0.64 mm bottom orientation receptacle contact only (2098762)
- Contains a locking latch and secondary lock plate

20 Position (2 x 10) Single Piece Plug



Female Plug

No. of Positions	Key Options	Housing Color	Part Numbers				
			Receptacle Housing	Cover	Mating Pin Housing	Mating PCB Header	
						Right-Angle	Vertical
20	A	Black	2098904-1	-	-	-	1438981-1 (SMT)
	B		2098904-2	-	-	-	
	C		2098904-3	-	-	-	
	D		2098904-4	-	-	-	
	E		2098904-5	-	-	-	-
	F		2098904-6	-	-	-	-

Technical Features

No of Positions:
20 (2 x 10)

Housing Materials:
Plug: Glass filled Nylon

Wire Size Range:
18-26 AWG

Instructions Sheet:
408-8599

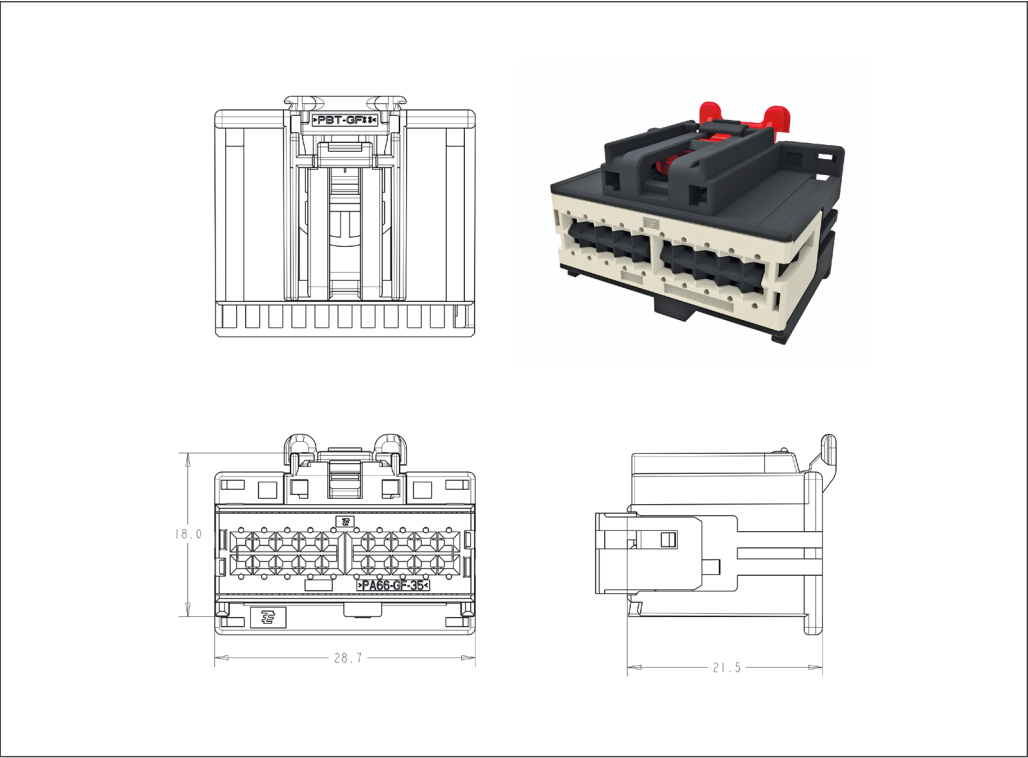
Application Specification:
408-10372

Mating USCAR Interface:
064-4-020-2-201

Notes

- Receptacle housing, USCAR interface with optional CPA (front loaded TPA)
- Accepts TE Connectivity Generation Y 0.64 mm top orientation receptacle contact (1924955)
- Optional keying available on bottom orientation receptable contact (2035334)

20 Position (2 x 10) Plug Assembly



Female Plug

No. of Positions	Key Options	Housing Color	Part Numbers				
			Receptacle Housing	Cover	Mating Pin Housing	Mating PCB Header	
						Right-Angle	Vertical
20	A	Black	2288276-1	-	-	-	1438981-1 (SMT)
	B	Gray	2288276-2	-	-	-	
	A	Black	2288276-7	-	-	-	
	B	Gray	2288276-8	-	-	-	

Technical Features

No. of Positions:

22

Housing Materials:

Glass filled Nylon

Wire Size Range:

18-26 AWG

Application Specification:

114-94258

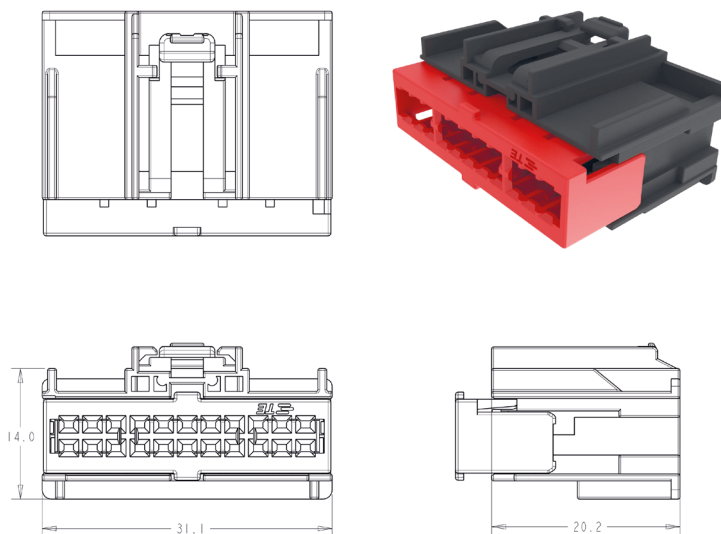
Interface Specification:

114-94181

Notes

- Accepts TE Connectivity Generation Y 0.64 mm bottom orientation receptacle contact (2035334) or top orientation receptacle contact (1924955)

22 Position (2 x 11) Female Plug



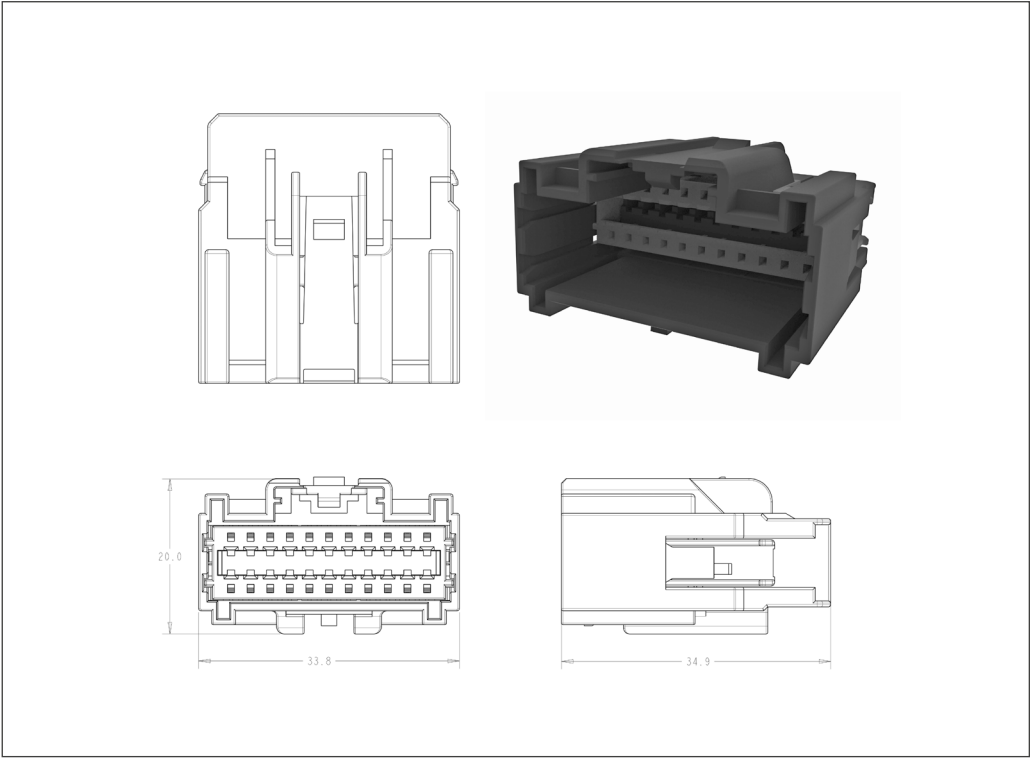
Inline Female Plug

No. of Positions	Key Options	Housing Color	Part Numbers				
			Receptacle Housing	Cover	Mating Pin Housing	Mating PCB Header	
						Right-Angle	Vertical
22	A	Black	1-2208021-1	-	2-2208018-1	-	-
	B	Natural	1-2208021-2	-	2-2208018-2	-	-
	C	Gray	1-2208021-3	-	2-2208018-3	-	-
	D	Green	1-2208021-4	-	2-2208018-4	-	-

Technical Features

- No. of Positions:
22
- Housing Material:
Glass filled Nylon
- Wire Size Range:
18-26 AWG
- Application Specification:
114-94258
- Interface Specification:
114-94181
- Notes
 - Accepts TE Connectivity Generation Y 0.64 mm male pin contact (1924968)
 - Clip Slot #: EWCAP-001

22 Position (2 x 11) Male Cap



Inline Male Cap

No. of Positions	Key Options	Housing Color	Part Numbers				
			Pin Housing	Cover	Mating Pin Housing	Mating PCB Header	
						Right-Angle	Vertical
22	A	Black	2-2208018-1	-	1-2208021-1	-	-
	B	Natural	2-2208018-2	-	1-2208021-2	-	-
	C	Gray	2-2208018-3	-	1-2208021-3	-	-
	D	Green	2-2208018-4	-	1-2208021-4	-	-

Technical Features**No of Positions:**

4 (2 x 0.64, 2 x 2.8 mm)

Housing Materials:

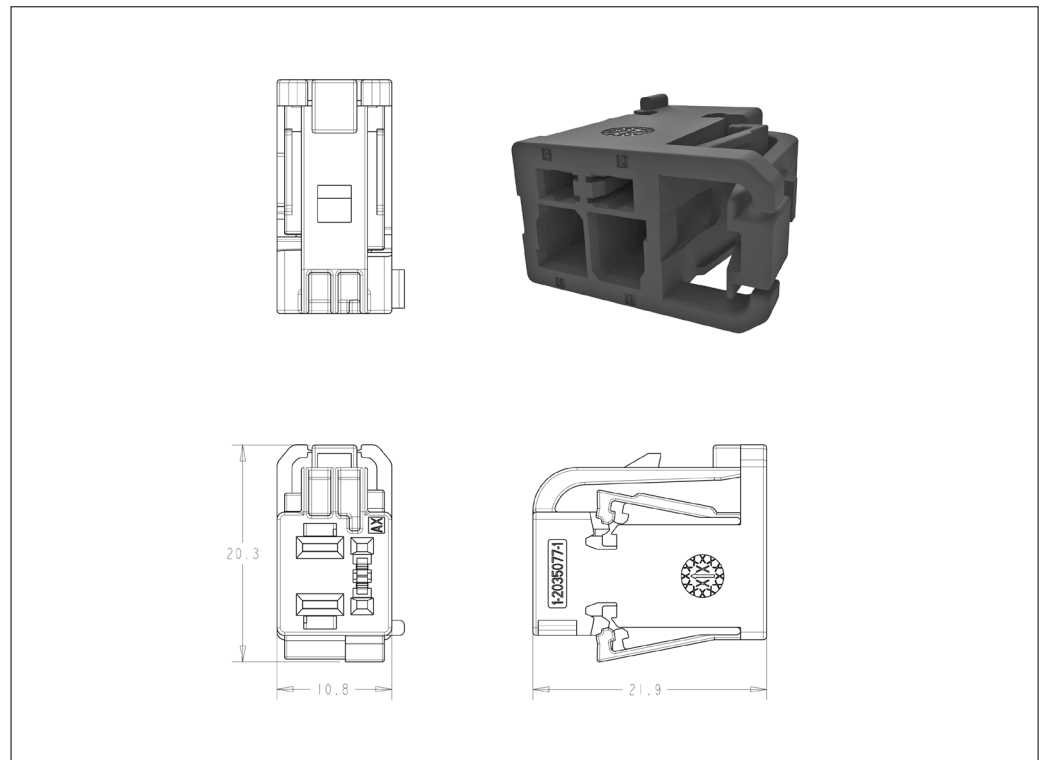
Plug: Glass filled PBT

Wire Size Range:

18-26 AWG

Notes

- Plug housing positions 2 + 4 accept TE Connectivity Generation Y 0.64 mm top orientation receptacle contacts (1924955)
- Plug housing positions 1 + 3 accept 2.8 mm Micro Power Quadlok receptacle contacts
- Contains a hinge lock
- Commonly used for seat motor applications
- Mating Interface: 2035077-MXCU

4 Position (2 x 0.64, 2 x 2.8 mm) Unsealed Hybrid Plug Housing**Female Hybrid Plug**

No. of Positions	Key Options	Housing Color	Part Numbers				
			Receptacle Housing	Cover	Mating Pin Housing	Mating PCB Header	
						Right-Angle	Vertical
4	F	Black	1-2035077-X	-	-	-	-
	A	Light Gray	1-2035077-X	-	-	-	-
	E	Dark Gray	1-2035077-X	-	-	-	-
	B	Brown	1-2035077-X	-	-	-	-

Technical Features

No of Positions:
4

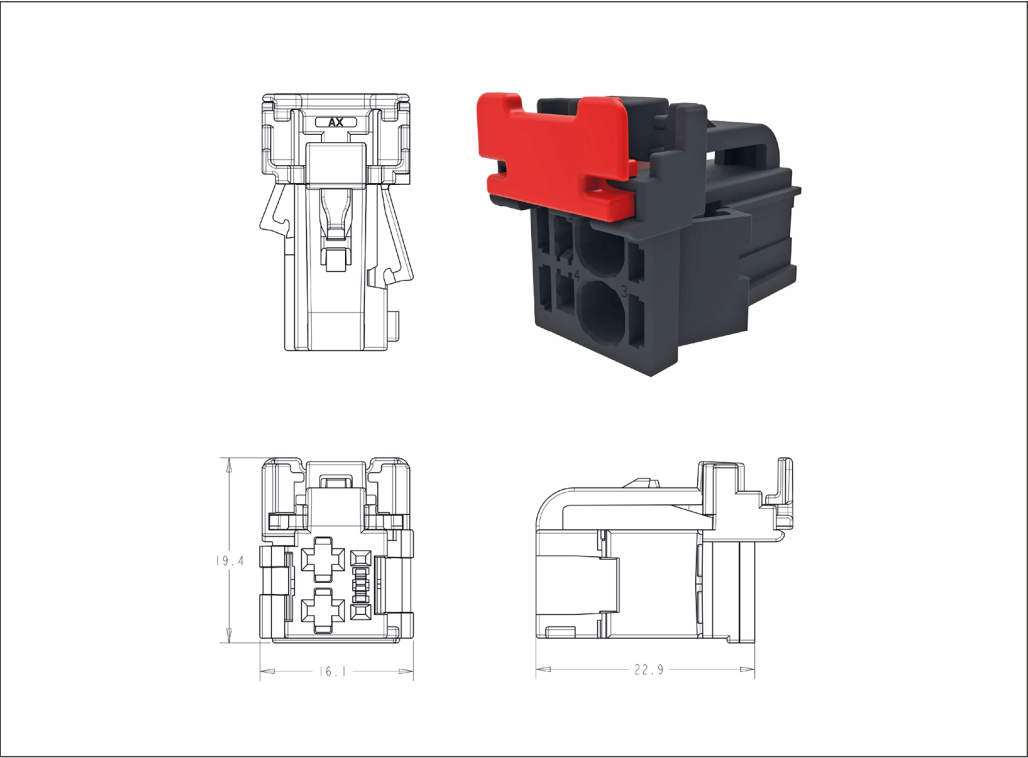
Housing Materials:
Plug: Glass filled PBT

Wire Size Range:
18-26 AWG

Instruction Sheet:
408-32158

- Notes
- Plug Housing Positions 2 + 4 accept TE Connectivity Generation Y 0.64 mm top orientation only (1924955)
 - Plug housing positions 1 + 3 accept TE Connectivity's AMP MCP 2.8K Flat Type receptacle contact (1564982 & 1241390)
 - Commonly used for seat motor applications
 - Mating Interface: 2035077-MXCU

4 Position Unsealed Hybrid Connector Assembly



Female Hybrid Plug

No. of Positions	Key Options	Housing Color	Part Numbers				
			Receptacle Housing	Cover	Mating Pin Housing	Mating PCB Header	
						Right-Angle	Vertical
4	F	Black	2316171-1	-	-	-	-
	A	Light Gray	2316171-2	-	-	-	-
	E	Dark Gray	2316171-3	-	-	-	-
	B	Brown	2316171-4	-	-	-	-

Technical Features

No. of Positions:

8 (4 + 4)

Housing Materials:

Plug: Glass filled Nylon

Wire Size Range:

18-26 AWG

Qualification Test Report:

501-699

Product Specification:

108-2400

Instruction Sheet:

408-10134, 408-10305

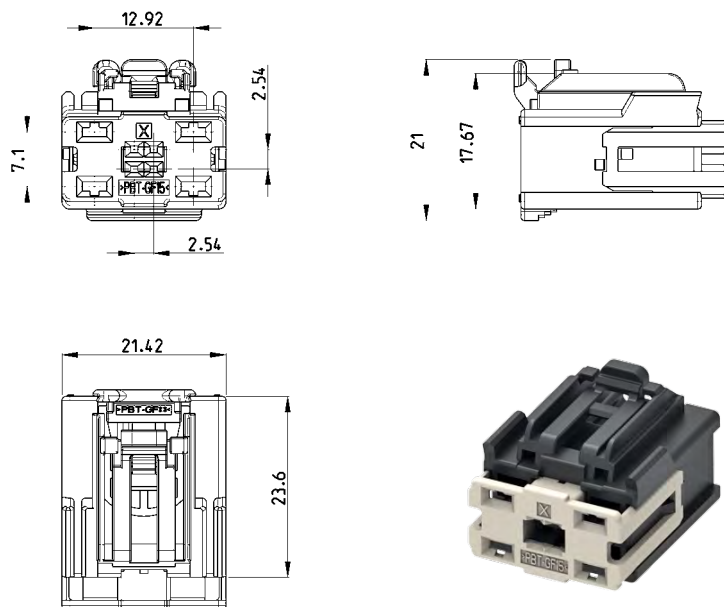
Application Specification:

114-13183

Notes

- Generation Y 0.64 mm top orientation receptacle contact.
- Accepts TE Connectivity 2.8 mm receptacle contact (1326030) 12-22 AWG
Application Specification: 114-13013

8 Position Hybrid 0.64 mm / 2.8 mm Connector



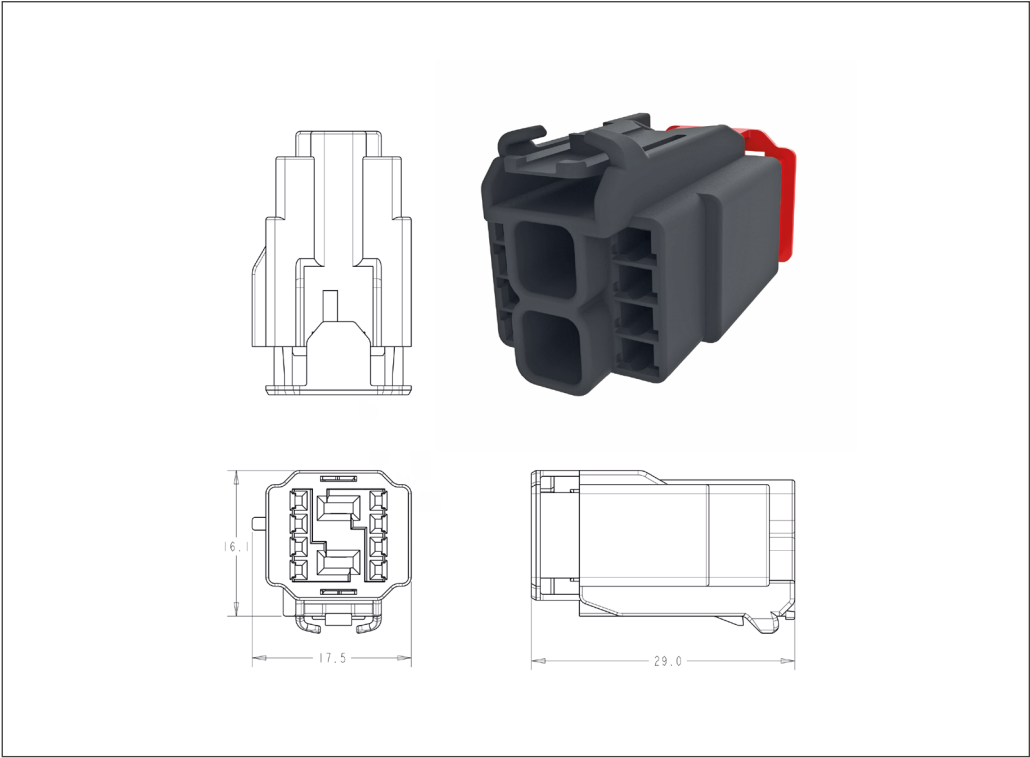
Hybrid Plug

No. of Positions	Key Options	Housing Color	Part Numbers						
			Receptacle Housing	CPA	Locking Device	Cover and Lever	Mating Pin Housing	Mating PCB Header	
								Right-Angle	Vertical
8	A	Black	1456471-1	Yes	-	-	-	-	1456468-1
			1456471-2	Yes	-	-	-	-	1456468-2
			1456471-3	Yes	-	-	-	-	1456468-3
			1456471-4	Yes	-	-	-	-	1456468-4
			1456471-5	-	-	-	-	-	1456468-5
			1456471-6	-	-	-	-	-	1456468-6
			1456471-7	-	-	-	-	-	1456468-7
			1456471-8	-	-	-	-	-	1456468-8

Technical Features

- No. of Positions:
10 (8 x 0.64, 2 x 2.8)
- Housing Materials:
Glass filled Nylon
- Wire Size Range:
18-26 AWG
- Interface Specification:
114-94188
- Application Specification:
114-94140
- Notes
 - Accepts TE Connectivity Generation Y 0.64 mm top orientation receptacle contact (1924955)

10 Position Unsealed Inline Female Plug



Female Hybrid Plug

No. of Positions	Key Options	Housing Color	Part Numbers				
			Receptacle Housing	Cover	Mating Pin Housing	Mating PCB Header	
						Right-Angle	Vertical
10	A	Black	2141999-1	-	2141994-1	-	-
	B	Gray	2177000-1	-	2141995-1	-	-
	C	Blue	2177612-1	-	2177614-1	-	-
	D	Green	2177613-1	-	2177615-1	-	-

Technical Features

No. of Positions:

10 Positions (8 x 0.64, 2 x 2.8)

Wire Size Range:

18-26 AWG

Application Specification:

114-94140

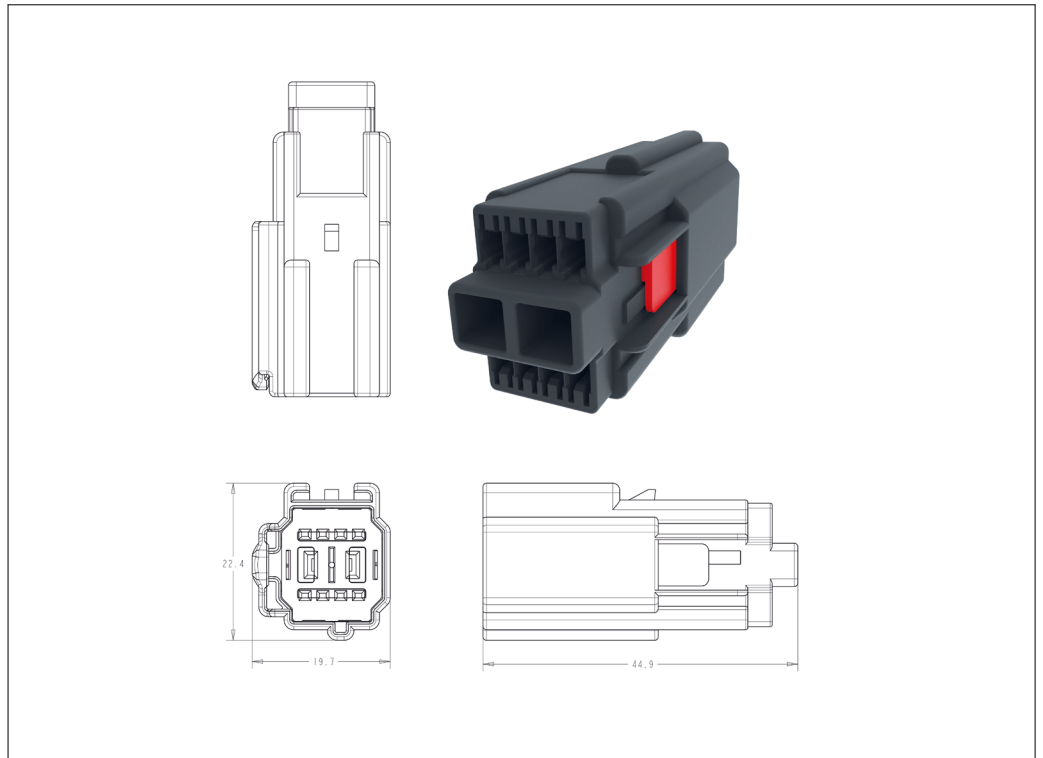
Interface Specification:

114-94188

Notes

- Accepts TE Connectivity Generation Y 0.64 mm male pin contact. (1924968)

10 Position Unsealed Inline Male Cap



Inline Male Cap

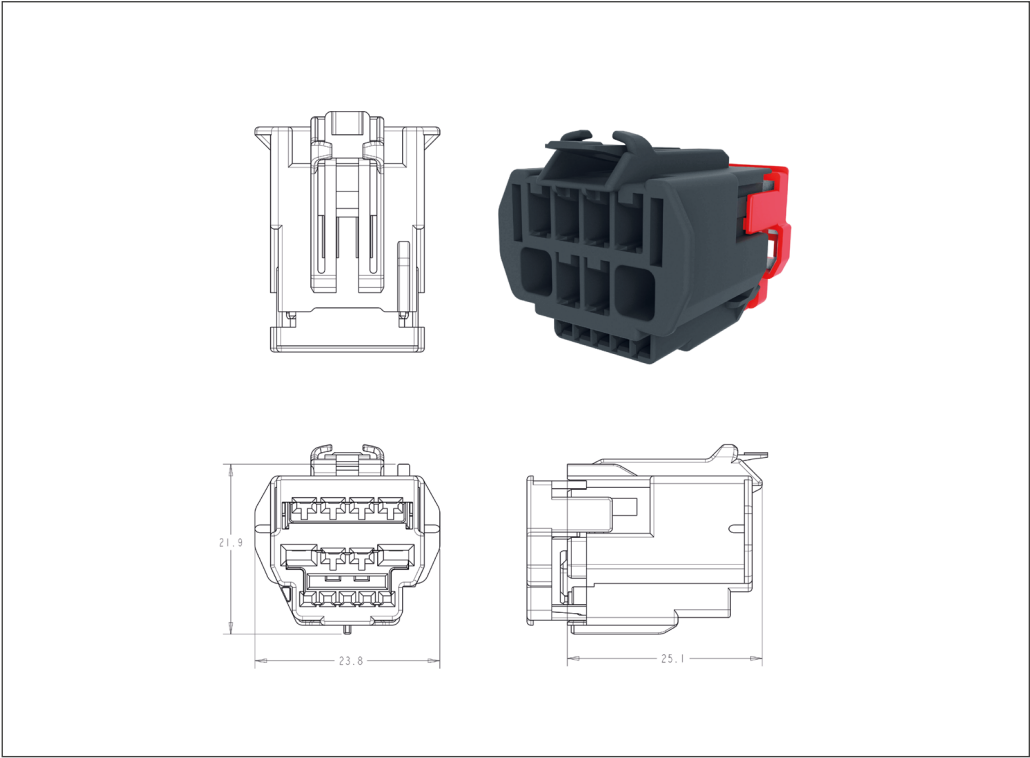
No. of Positions	Key Options	Housing Color	Part Numbers				
			Receptacle Housing	Cover	Mating Pin Housing	Mating PCB Header	
						Right-Angle	Vertical
10	A	Black	2141994-1	-	2141999-1	-	-
	B	Gray	2141995-1	-	2177000-1	-	-
	C	Blue	2177614-1	-	2177612-1	-	-
	D	Green	2177615-1	-	2177613-1	-	-

Technical Features

- No. of Positions:
13 (5 x 0.64, 6 x 1.5, 2 x 2.8)
- Housing Materials:
Glass filled Nylon
- Wire Size Range:
18-26 AWG
- Application Specification:
114-94220
- Interface Specification:
114-94221

- Notes
- Accepts TE Connectivity Generation Y 0.64 mm top orientation receptacle contact (1924955)
 - Qualification Test Report: DTR-00-140-953

13 Position Unsealed Inline Female Plug



Inline Female Plug

No. of Positions	Key Options	Housing Color	Part Numbers				
			Receptacle Housing	Cover	Mating Pin Housing	Mating PCB Header	
						Right-Angle	Vertical
13	A	Black	2141648-1	-	2141647-1	-	-
	B	Gray	2141648-2	-	2141647-2	-	-

Technical Features

No. of Positions:

13 (2 x 2.8, 6 x 1.5, 5 x 0.64)

Housing Materials:

Glass filled Nylon

Wire Size Range:

18-26 AWG

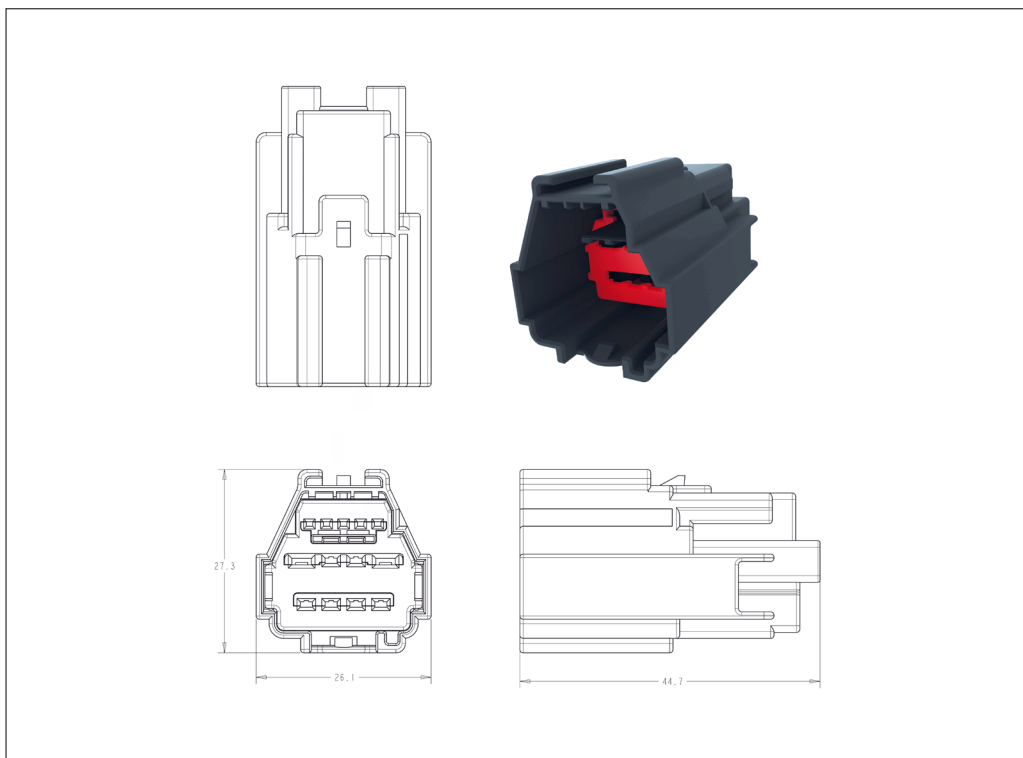
Application Specification:

114-94220

Notes

- Accepts TE Connectivity Generation Y 0.64 mm male pin contact (1924968)

13 Position Unsealed Inline Male Cap



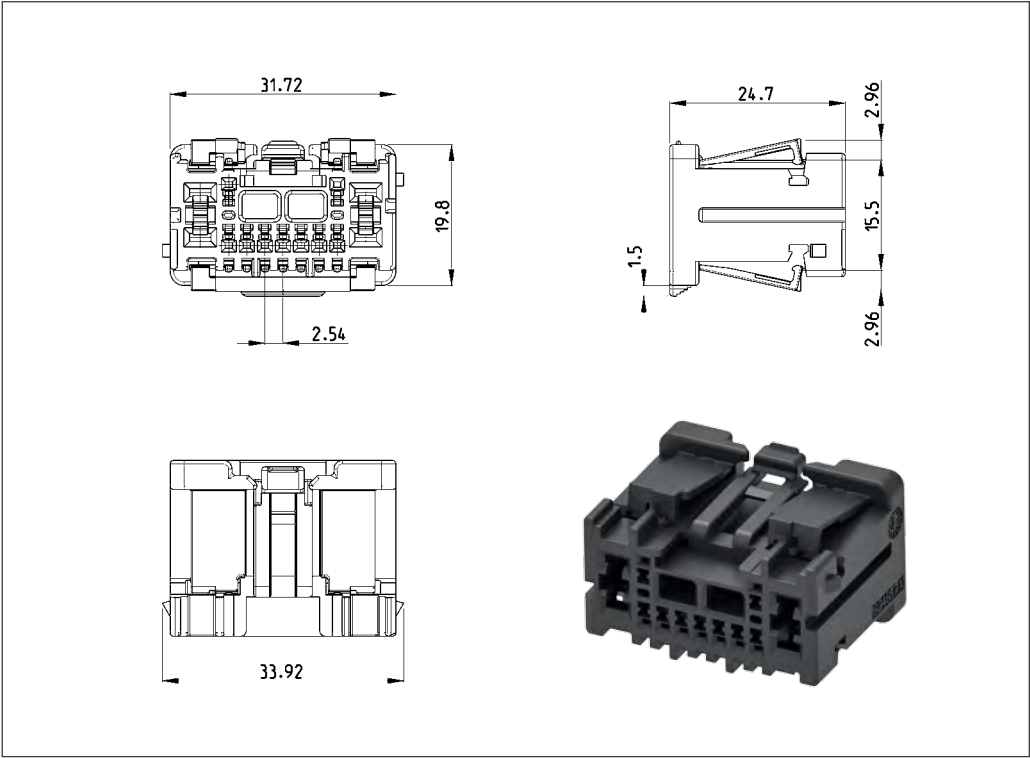
Inline Male Cap

No. of Positions	Key Options	Housing Color	Part Numbers				
			Pin Housing	Cover	Mating Receptacle Housing	Mating PCB Header	
						Right-Angle	Vertical
13	A	Black	2141647-1	-	2141648-1	-	-
	B	Gray	2141647-2	-	2141648-2	-	-
	A	Black	2141647-3	-	2141648-1	-	-
	B	Gray	2141647-4	-	2141648-2	-	-

Technical Features

- No. of Positions:
13 (4+9)
- Housing Materials:
Glass filled PBT
- Wire Size Range:
12-22 AWG
- Instruction Sheet:
408-10292
- Application Specification:
114-13013
- Notes
 - Accepts TE Connectivity Generation Y 0.64 mm Terminal Top Orientation only. 18-22 AWG
 - Application Specification: 114-13183
 - Accepts TE Connectivity 2.8 mm receptacle contact (1326030)
 - Mating Interface: 1924667-INT

13 Position Unsealed Connector System (Hybrid 0.64 mm / 2.8 mm Connector)



Hybrid Connector

No. of Positions	Key Options	Housing Color	Part Numbers						
			Receptacle Housing	Cover	Locking Device	Cover and Lever	Mating Pin Housing	Mating PCB Header	
								Right-Angle	Vertical
13	A	Black	1924667-1	-	-	-	-	-	-

Technical Features**No. of Positions:**

21 (4+17)

Housing Materials:

Glass filled PBT

Wire Size Range:

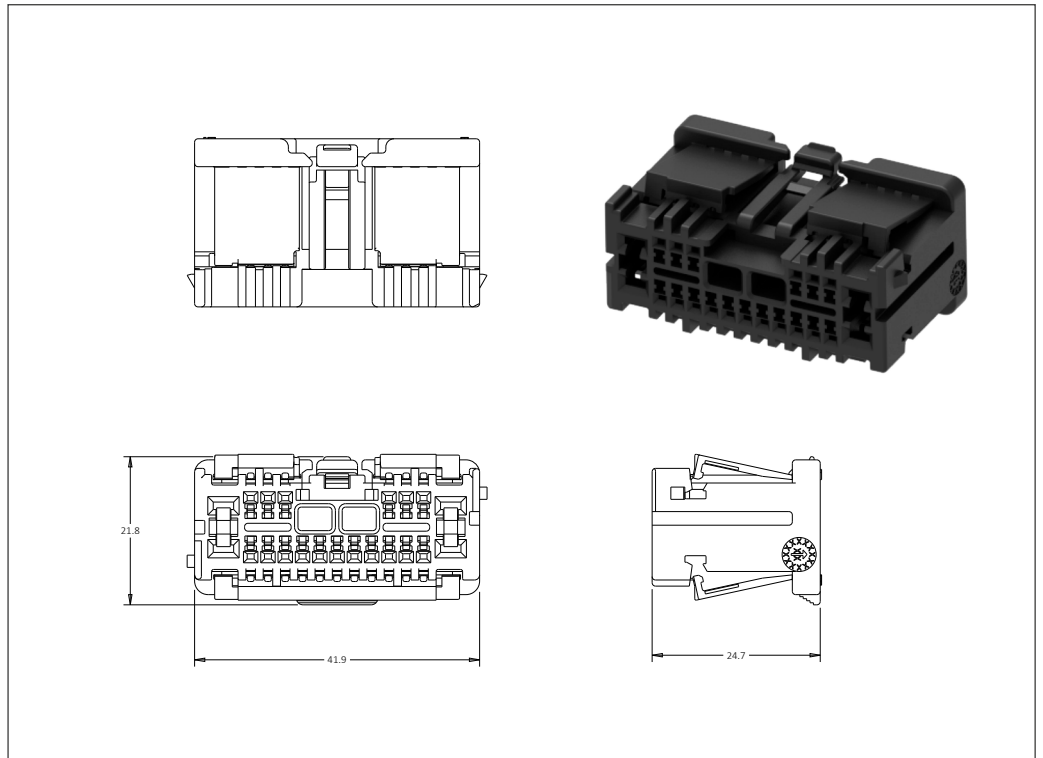
See below

Instruction Sheet:

408-10292

Notes

- Accepts TE Connectivity Generation Y 0.64 mm top orientation receptacle contact only.
18-22 AWG
- Application Specification: 114-13183
- Accepts TE Connectivity 2.8 mm receptacle contact (1326030).
12-22 AWG
Application Specification: 114-13013
- Mating Interface: 1924126-GEN

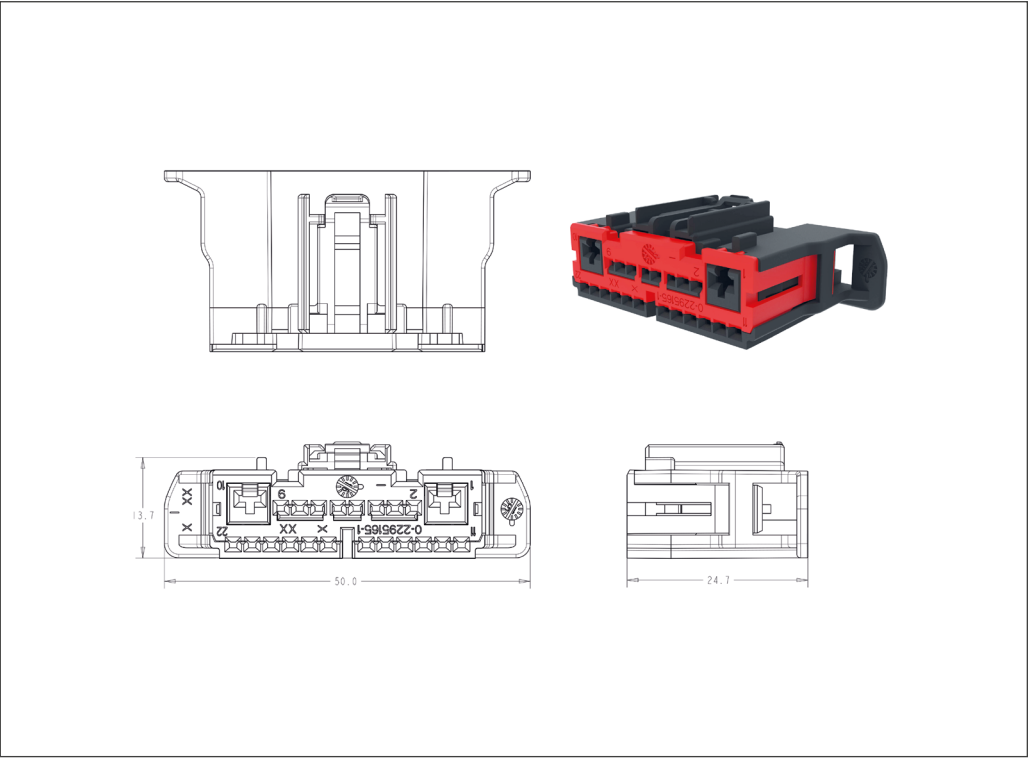
21 Position Unsealed Connector System (Hybrid 0.64 mm / 2.8 mm Connector)**Hybrid Connector**

No. of Positions	Key Options	Housing Color	Part Numbers						
			Receptacle Housing	Cover	Locking Device	Cover and Lever	Mating Pin Housing	Mating PCB Header	
								Right-Angle	Vertical
21	A	Black	1924126-1	-	-	-	-	-	-

Technical Features

- No. of Positions:
22 (20 x Gen Y, 2 x TE 2.8)
- Housing Materials:
Glass filled Nylon
- Wire Size Range:
18-26 AWG
- Application Specification:
114-94484
- Interface Specification:
114-94384
- Notes
 - Accepts TE Connectivity Generation Y 0.64 mm bottom orientation receptacle contact (2098762).
 - Application Specification: 114-13183
 - Accepts TE Connectivity 2.8mm receptacle contact (1326030) 14-20 AWG Application Specification: 114-13013

22 (20 x 0.64, 2 x 2.8 mm) Position Plug Assembly



Female Plug

No. of Positions	Key Options	Housing Color	Part Numbers				
			Receptacle Housing	Cover	Mating Pin Housing	Mating PCB Header	
						Right-Angle	Vertical
22	A	Black	2295163-1	-	-	-	-
	B	Gray	2295163-2	-	-	-	-
	C	Blue	2295163-3	-	-	-	-
	D	Green	2295163-4	-	-	-	-

Technical Features

No of Positions:
24 (20 x 0.64 mm, 4 x 2.8 mm)

Housing Materials:
Plug: Glass filled Nylon

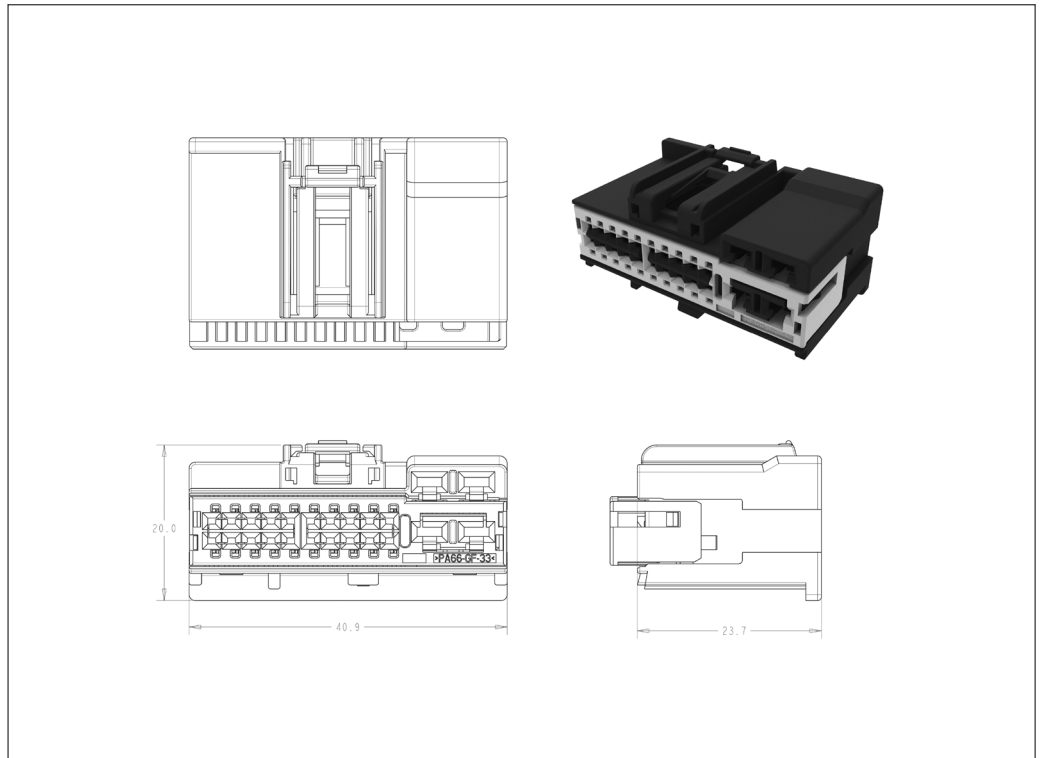
Wire Size Range:
18-26 AWG

Instruction Sheet:
408-32044

Notes

- Receptacle housing, with optional CPA (front loaded TPA)
- Accepts TE Connectivity Gen Y 0.64 mm top orientation receptacle contact (1924955 or 2035334)
- Optional keying available

24 Position Unsealed Hybrid Plug



Female Plug

No. of Positions	Key Options	Housing Color	Part Numbers				
			Receptacle Housing	Cover	Mating Pin Housing	Mating PCB Header	
						Right-Angle	Vertical
24	A	Black	2288274-1	-	-	-	-
	B	Gray	2288274-2	-	-	-	-
	C	Brown	2288274-3	-	-	-	-

Technical Features

No. of Positions:
24 (13 x 0.64 mm, 8 x 1.5 mm, 3 x 2.8 mm)

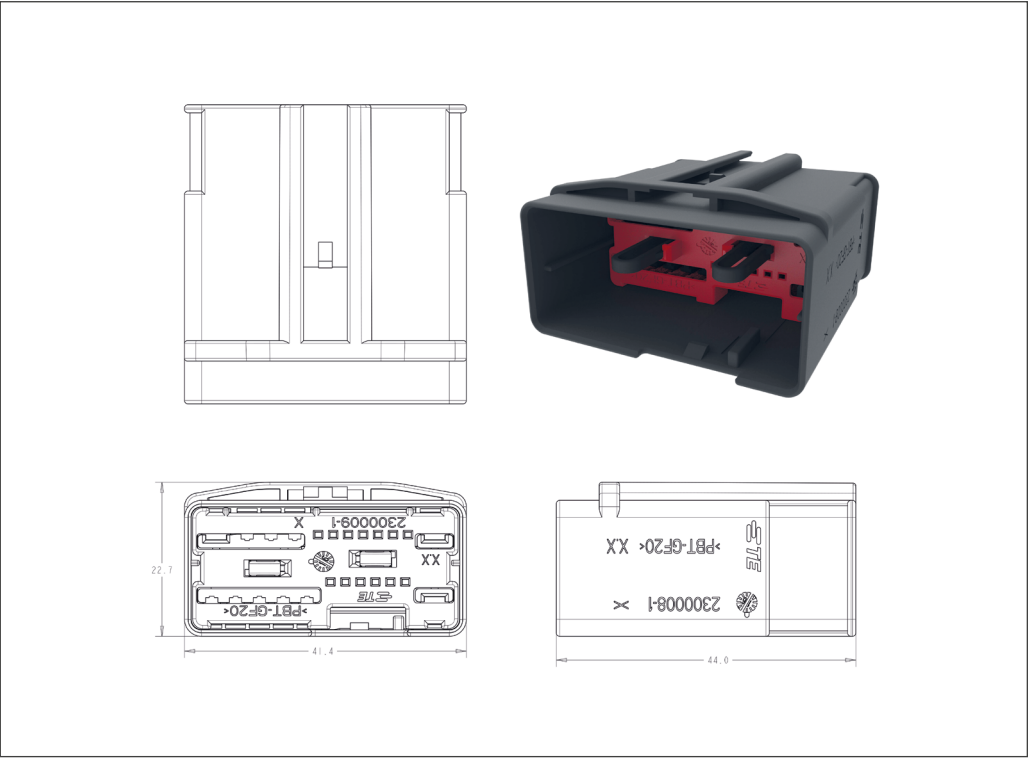
Housing Materials:
Glass filled PBT

Wire Size Range:
See below

Application Specification:
114-94483

- Notes**
- Accepts TE Connectivity Generation Y 0.64 mm pin contact (1924968)
 - Accepts 1.5 mm male receptacle contact
 - Accepts 2.8 mm male receptacle contact (1326029)
 - Mates with 2300010 plug series

24 Position Unsealed Inline Male Plug



Inline Male

No. of Positions	Key Options	Housing Color	Part Numbers				
			Pin Housing	Cover	Mating Receptacle Housing	Mating PCB Header	
						Right-Angle	Vertical
24	A	Gray	2300007-1	-	2300010-1	-	-
	B	Black	2300007-2	-	2300010-2	-	-
	C	Natural	2300007-3	-	2300010-3	-	-

Technical Features

No. of Positions:

24 Positions (13 x 0.64mm,
8 x 1.5 mm, 3x 2.8 mm)

Housing Materials:

Glass filled PBT

Wire Size Range:

See below

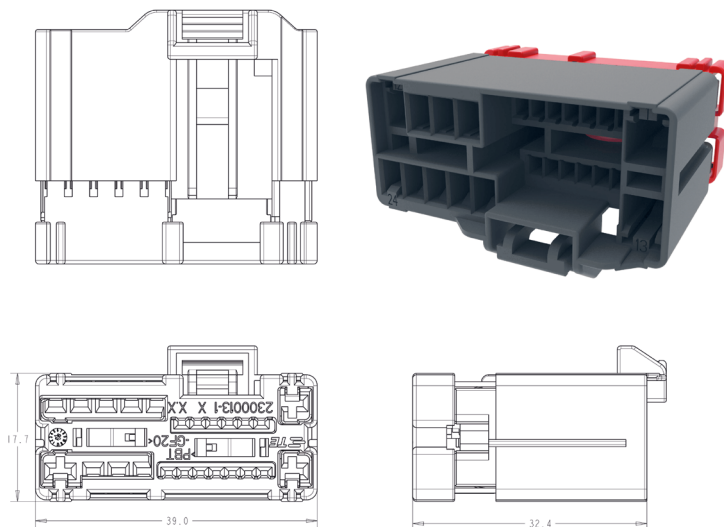
Application Specification:

114-94483

Notes

- Accepts TE Connectivity Generation Y 0.64 mm bottom orientation receptacle contact (2035334) 18-22 AWG
- Accepts 2.8 mm female receptacle contact (1326030) 14-22 AWG
- Application Specification: 114-13013
- Mates with 2300007 plug series

24 Position Unsealed Inline Female Plug



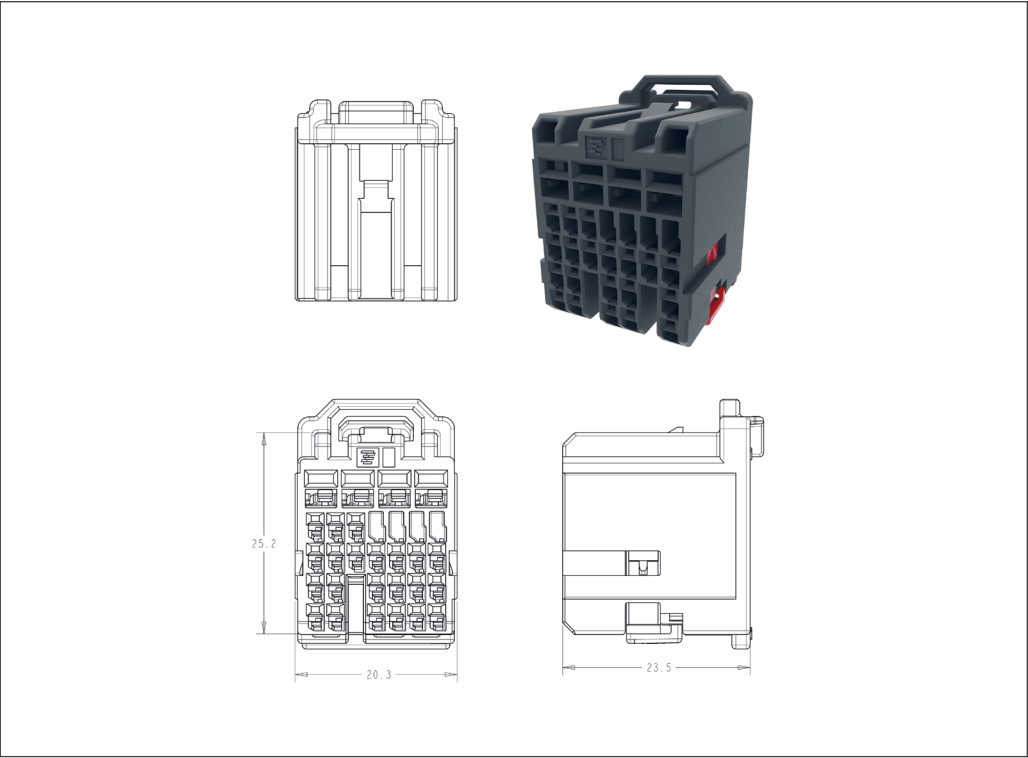
Female Plug

No. of Positions	Key Options	Housing Color	Part Numbers				
			Receptacle Housing	Cover	Mating Pin Housing	Mating PCB Header	
						Right-Angle	Vertical
24	B	Gray	2300010-1	-	2300007-1	-	-
	B	Black	2300010-2	-	2300007-2	-	-
	C	Natural	2300010-3	-	2300007-3	-	-

Technical Features

- No. of Positions:
27 maximum
- Housing Materials:
Glass Filled PBT
- Wire Size Range:
18-26 AWG
- Instruction Sheet:
408-10318
- Notes
 - Accepts TE Connectivity Generation Y 0.64 mm bottom orientation receptacle contact only (2098762)
 - Contains a locking latch and secondary lock plate
 - Mating Interface: 2098385

32 Position Hybrid Unsealed Plug Assembly



Female Hybrid Plug

No. of Positions	Key Options	Housing Color	Connector ID	Part Numbers				
				Receptacle Housing	Cover	Mating Pin Housing	Mating PCB Header	
							Right-Angle	Vertical
27 max	A	Natural	IP1	2098067-1	-	-	-	-
	B	Blue	IP2	2098067-2	-	-	-	-
	C	Black	U1	2098067-3	-	-	-	-
	D	Brown	U2	2098067-4	-	-	-	-
	E	Pink	B1	2098067-5	-	-	-	-
	F	Gray	B2	2098067-6	-	-	-	-
	G	Green	CL	2098067-7	-	-	-	-

Technical Features

No. of Positions:

50 Positions (36 x 0.64 mm,
14x 1.5 mm)

Housing Materials:

Glass filled PBT

Wire Size Range:

18-26 AWG

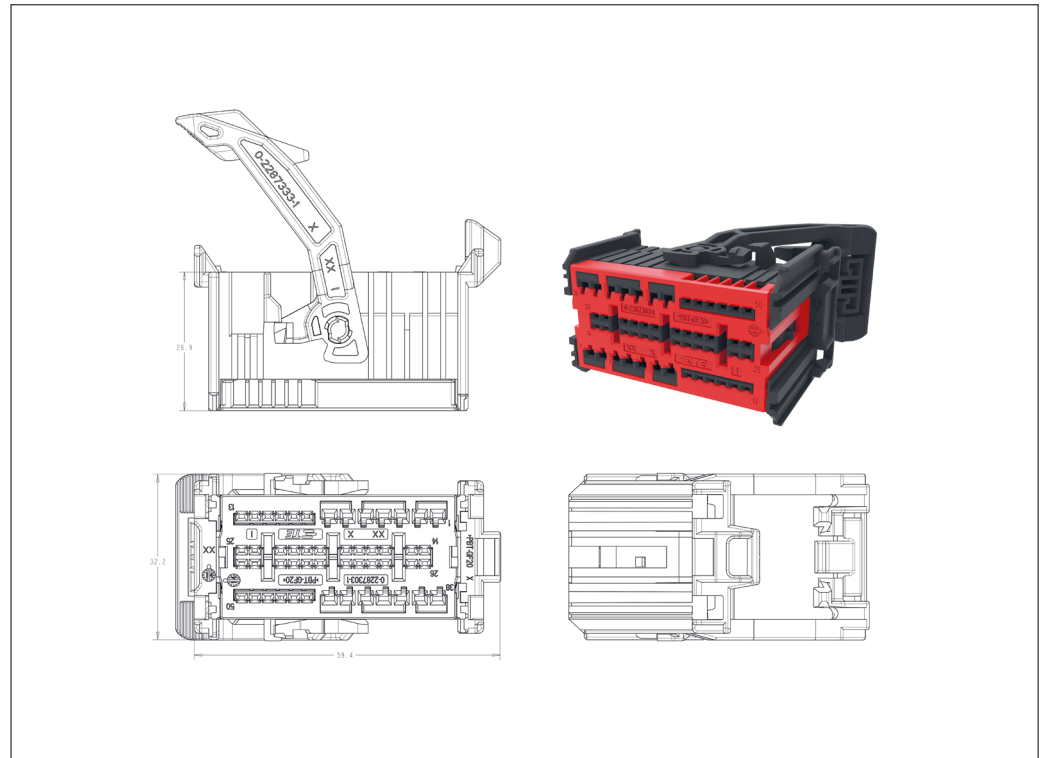
Application Specification:

114-94371

Notes

- Accepts TE Connectivity Generation Y 0.64 mm bottom orientation receptacle contact (2035334)
- Accepts 1.5 mm receptacles
- Mates with 2287334 cover series

50 Position Unsealed Hybrid Plug Assembly



Female Plug

No. of Positions	Key Options	Housing Color	Part Numbers				
			Receptacle Housing	Cover	Mating Pin Housing	Mating PCB Header	
						Right-Angle	Vertical
50	A	Black	2287277-1	2287334-1	-	-	-
	B	Gray	2287277-2	2287334-1	-	-	-

Technical Features

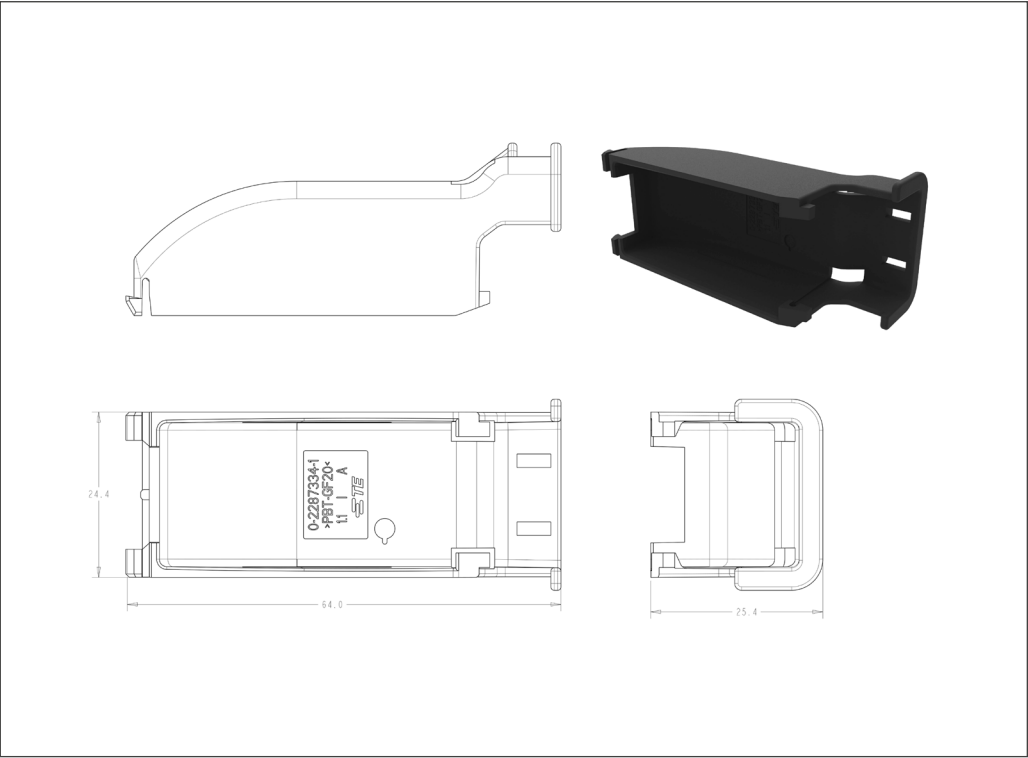
No. of Positions:
50

Housing Materials:
Glass filled PBT

Application Specification:
114-94371

- Notes**
- Cover used with 2287277 series

50 Position Protection Cap



Protection Cap

No. of Positions	Key Options	Housing Color	Part Numbers				
			Cover	Mating Receptacle Housing	Mating Pin Housing	Mating PCB Header	
						Right-Angle	Vertical
50	A	Black	2287334-1	2287277-1	-	-	-
	B	Black	2287334-1	2287277-2	-	-	-

Technical Features

No. of Positions:

72 (44 x 0.64 mm, 18 x 1.5 mm,
6 x 2.8 mm)

Housing Materials:

Glass filled PBT

Wire Size Range:

18-26 AWG

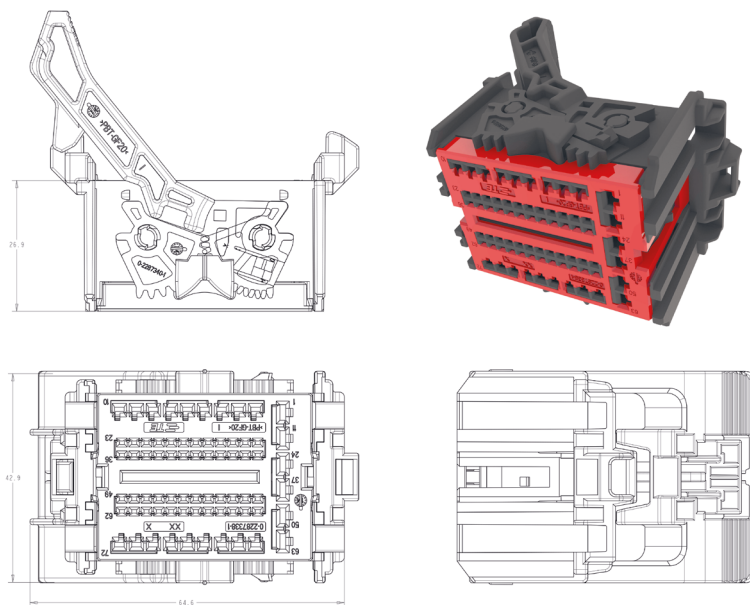
Application Specification:

114-94370

Notes

- Accepts TE Connectivity Generation Y 0.64 mm bottom orientation receptacle contact (2035334)
- Accepts 1.5 mm and 2.8 mm receptacles
- Mates with 2287341 cover series

72 Position Unsealed Hybrid Plug Assembly



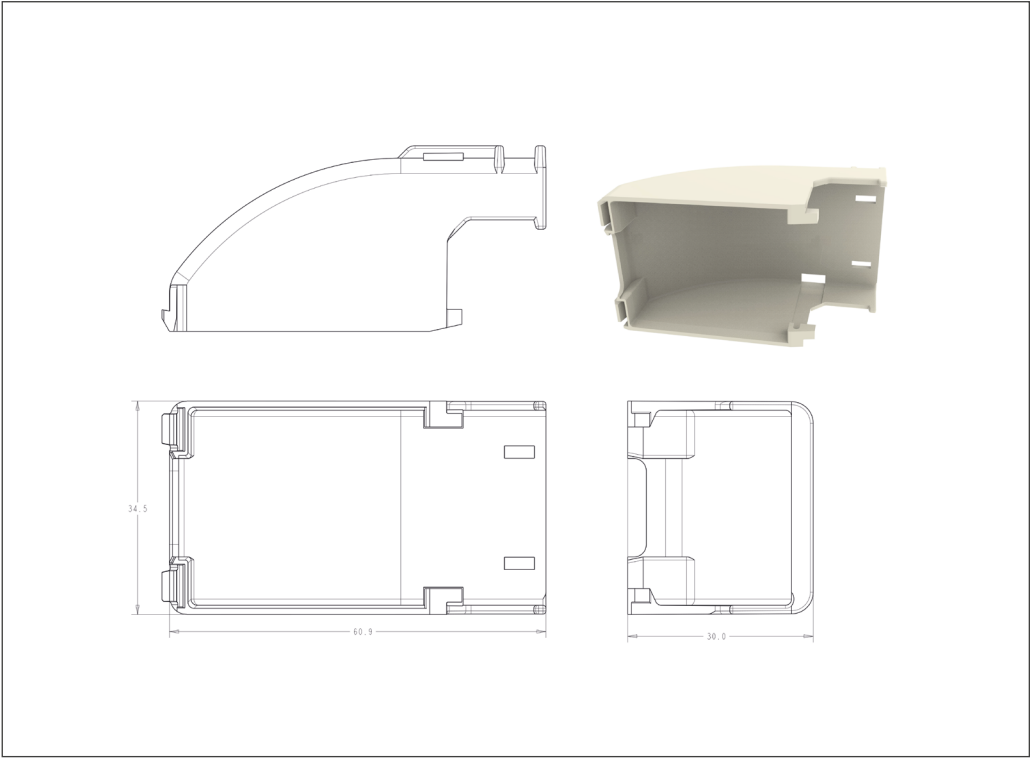
Female Plug

No. of Positions	Key Options	Housing Color	Part Numbers				
			Receptacle Housing	Cover	Mating Pin Housing	Mating PCB Header	
						Right-Angle	Vertical
72	A	Black	2287336-1	1-2287341-2	-	-	-
	B	Gray	2287336-2	1-2287341-2	-	-	-

Technical Features

- No. of Positions:
72
- Housing Materials:
Glass filled PBT
- Application Specification:
114-94370
- Notes
 - Cover used with 2287336 plug series

72 Position Protection Cap



Protection Cap

No. of Positions	Key Options	Housing Color	Wire Exit Angle	Part Numbers				
				Cover	Mating Receptacle Housing	Mating Pin Housing	Mating PCB Header	
							Right-Angle	Vertical
72	A	Natural	90 (right angle)	1-2287341-2	2287336-1	-	-	-
	B	Natural		1-2287341-3	2287336-2	-	-	-

Technical Features

No. of Positions:

6 (2 x 3)

Housing Material:

Glass filled Nylon

Wire Size Range:

20-22 AWG

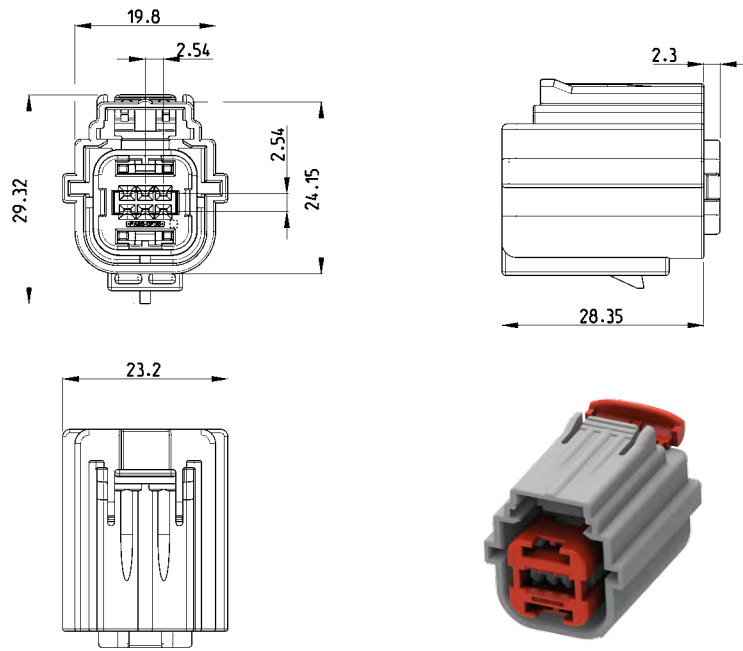
Instruction Sheet:

408-10178

Notes

- Accepts TE Connectivity Generation Y 0.64 mm side orientation receptacle contact only.
18-22 AWG
- Application Specification:
114-13183

6 Position Sealed Connector System



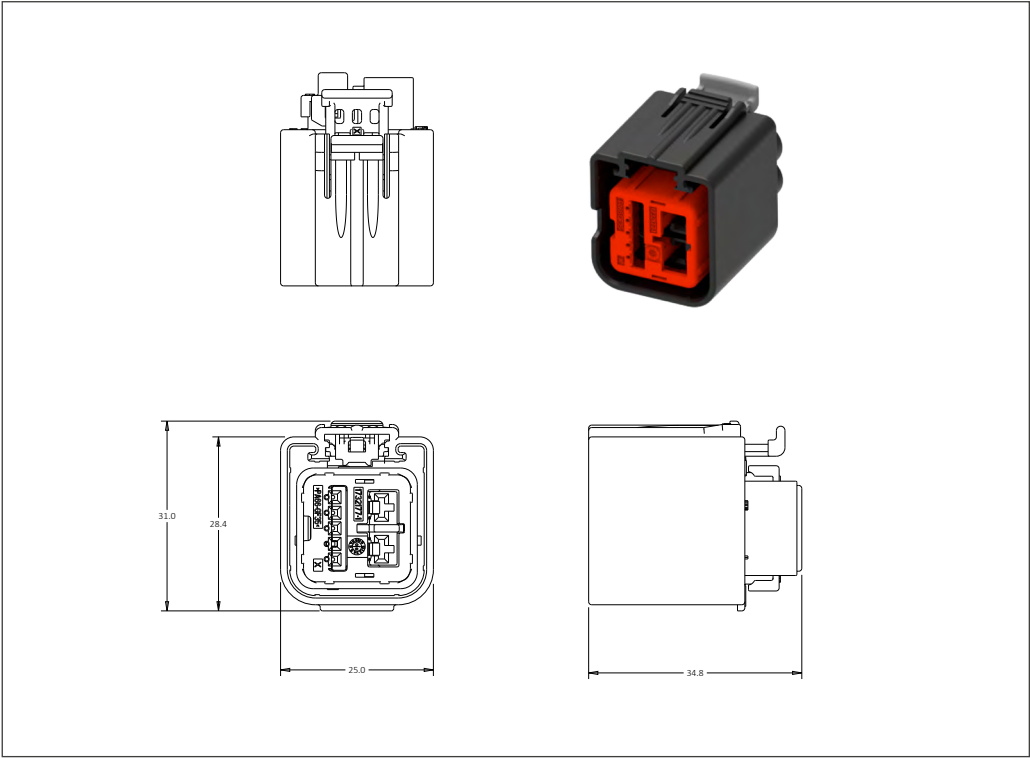
Sealed Connector

No. of Positions	Key Options	Housing Color	Part Numbers						
			Receptacle Housing	Cover	Locking Device	Cover and Lever	Mating Pin Housing	Mating PCB Header	
								Right-Angle	Vertical
6	A	Gray	1924211-1	-	-	-	1924212-1	-	-

Technical Features

- No. of Positions:
7 (2+5)
- Housing Materials:
Glass filled Nylon
- Wire Size Range:
See below
- Instruction Sheet:
408-10106
- Notes
 - Accepts TE Connectivity Generation Y 0.64 mm bottom orientation receptacle contact only.
20-22 AWG
Application Specification: 114-13183
 - Accepts TE Connectivity 2.8 mm receptacle contact (1326032) with wire seal.
12-22 AWG
 - Application Specification: 114-13013
 - Mating USCAR Interface: 999-S-007-2-A01
 - Pin-out configurations available.

7 Position Sealed Connector System (Hybrid 0.64 mm / 2.8 mm Connector)



Sealed Connector

No. of Positions	Key Options	Housing Color	Part Numbers						
			Receptacle Housing	Cover	Locking Device	Cover and Lever	Mating Pin Housing	Mating PCB Header	
								Right-Angle	Vertical
7	A	Black	1732175-1	-	-	-	-	-	-

Technical Features

No. of Positions:

10 (2 x 5)

Housing Materials:

Glass filled PBT

Wire Size Range:

18-22 AWG

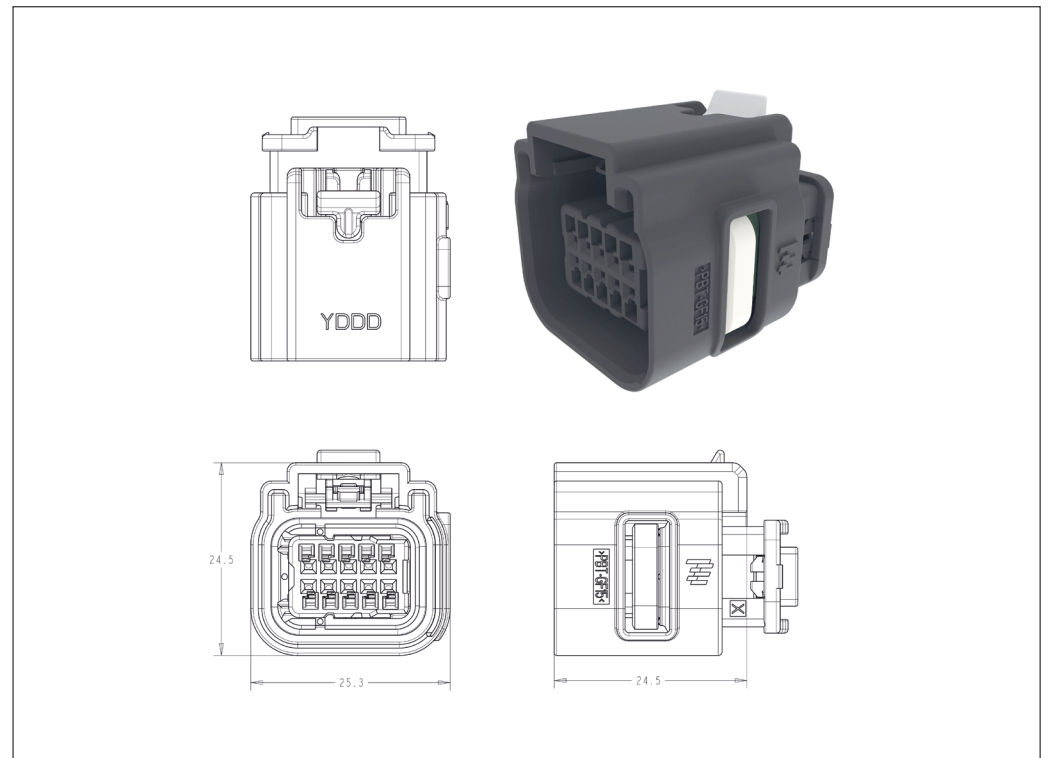
Instruction Sheet:

408-10350

Notes

- Receptacle housing, USCAR interface with optional CPA and ISL
- Accepts TE Connectivity Generation Y 0.64 mm side orientation receptacle contact only (2035170)
- Mating USCAR Interface: 064-S-010-2-Z01
- Pin-out configurations available.
- Optional terminals: 2035170 (tan) 2203242 (silver)

10 (2 x 5) Position Plug Assembly



Female Plug

No. of Positions	Key Options	Housing Color	CPA	Part Numbers				
				Receptacle Housing	Cover	Mating Pin Housing	Mating PCB Header	
							Right-Angle	Vertical
10	A	Black	No	2098269-1	2293583-1	-	-	-
	B	Gray	No	2098269-2	2293583-1	-	-	-
	C	Brown	No	2098269-3	2293583-1	-	-	-
	D	Green	No	2098269-4	2293583-1	-	-	-
	A	Black	No	2098269-5	2293583-1	-	-	-
	A	Black	Yes	3-2098269-1	2293583-1	-	-	-
	B	Gray	Yes	3-2098269-2	2293583-1	-	-	-
	C	Brown	Yes	3-2098269-3	2293583-1	-	-	-
	D	Green	Yes	3-2098269-4	2293583-1	-	-	-

Technical Features

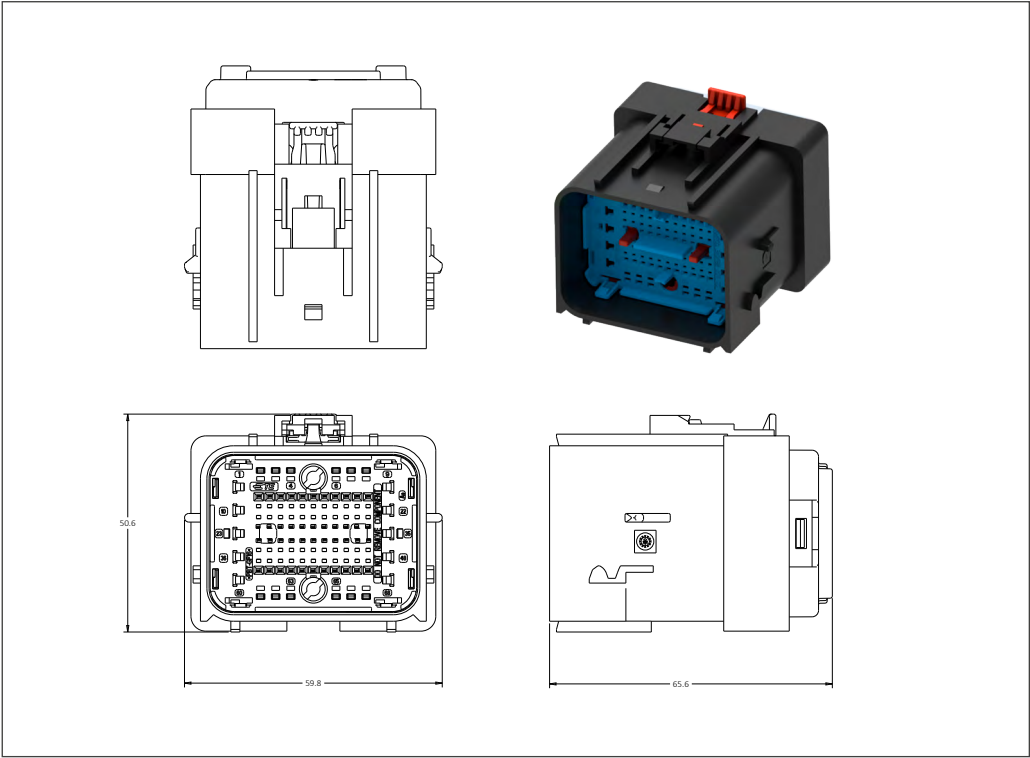
No. of Positions:
68 (44 x 0.64 mm, 12 x 1.5 mm,
10 x 2.8 mm, 2 x TE MATE-AX)

Housing Materials:
Glass filled PA6

Wire Size Range:
18-22 AWG

- Notes**
- Accepts TE's MATE-AX data connectivity and Generation Y male terminals

68 Position Sealed Inline Male Cap



Male Cap (Inline)

No. of Positions	Key Options	Housing Color	Part Numbers				
			Male Connector	Cover	Mating Female Connector	Mating PCB Header	
						Right-Angle	Vertical
68	A	Black	2377649-1	-	2377653-1	-	-
	B	Light Gray	2377650-1	-	2377654-1	-	-
	C	Dark Gray	2377651-1	-	2403333-1	-	-
	D	Black	2377652-1	-	2377656-1	-	-

Technical Features

No. of Positions:

68 (44 x 0.64 mm, 12 x 1.5 mm,
10 x 2.8 mm, 2 x MATE-AX)

Housing Materials:

Glass Filled PA6

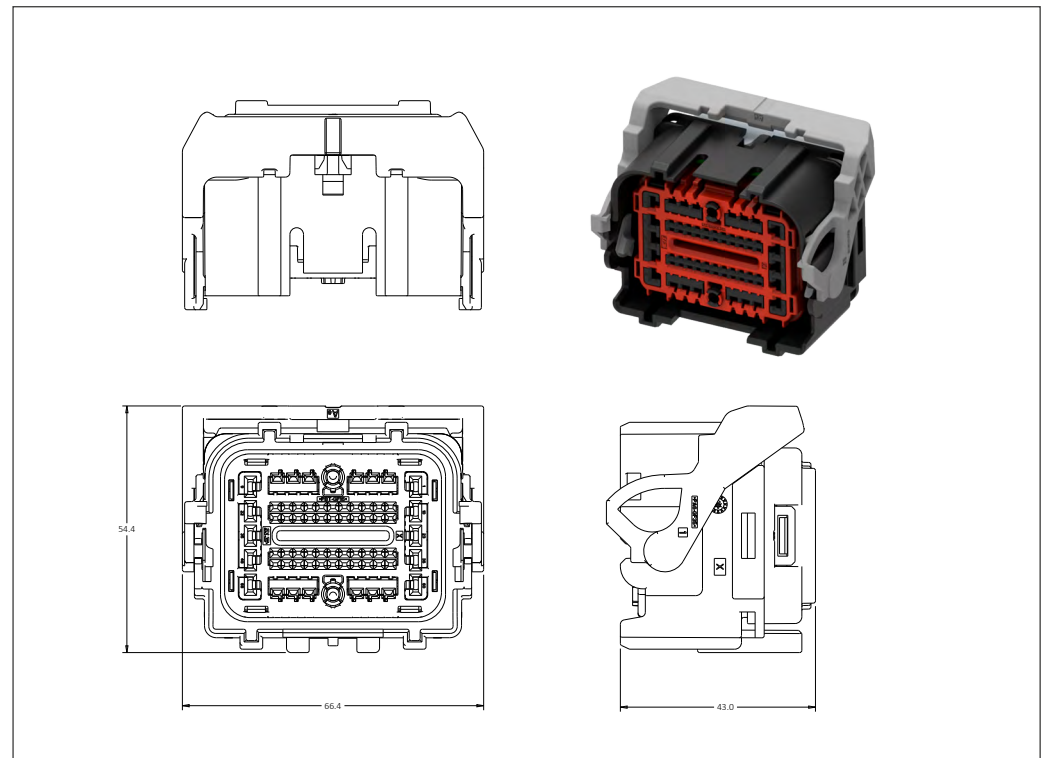
Wire Size Range:

18-22 AWG

Notes

- Accepts TE Connectivity MATE-AX data connectivity and Generation Y female terminals

68 Position Sealed Inline Female Plug



Female Plug (Inline)

No. of Positions	Key Options	Housing Color	Part Numbers				
			Female Connectors	Cover	Mating Male Connector	Mating PCB Header	
						Right-Angle	Vertical
68	A	Black	2377653-1	-	2377649-1	-	-
	B	Light Gray	2377654-1	-	2377650-1	-	-
	C	Dark Gray	2403333-1	-	2377651-1	-	-
	D	Black	2377656-1	-	2377652-1	-	-

Technical Features

No. of Positions:
90 (80 x 0.64 mm, 8 x 1.5 mm, 2x 6.3 mm)

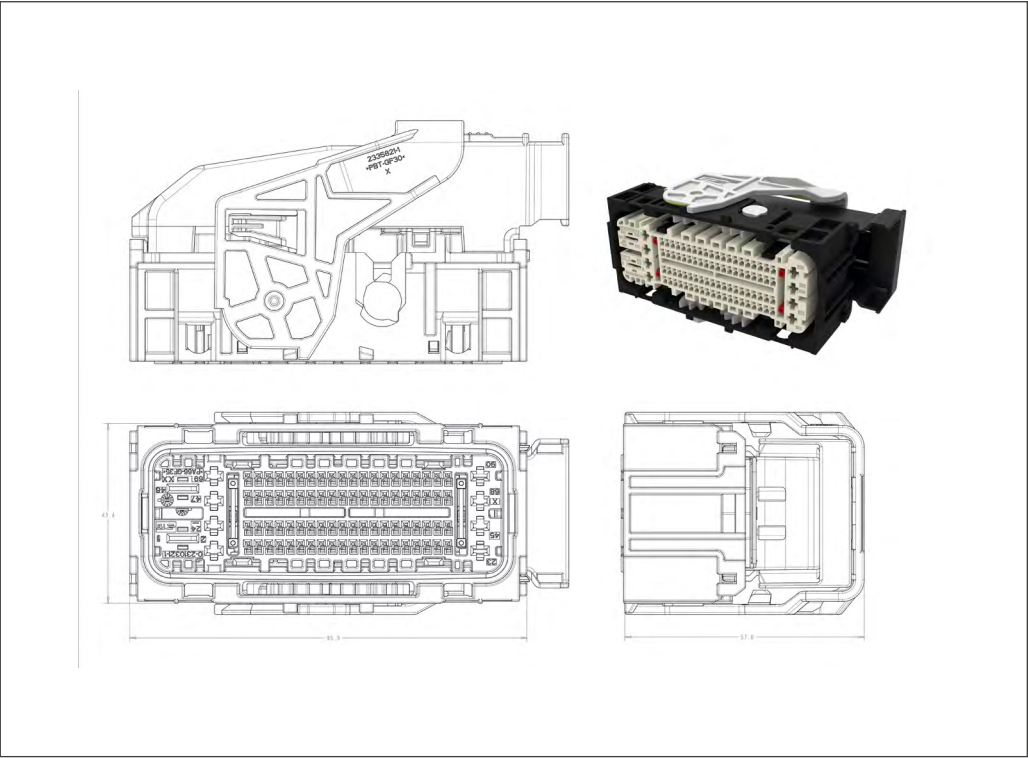
Housing Materials:
Glass filled PBT

Wire Size Range:
8-22 AWG

Instruction Sheet:
408-32192

- Notes**
- Accepts TE Connectivity Generation Y 0.64 mm side orientation receptacle contact (2203242)
 - Accepts AMP MCP 2.8 mm receptacle contact (968855, 968857)
 - Accepts AMP MCP 6.3 mm receptacle contact (1241412, 1241418)
 - Application Specification: 114-13183 (0.64), 114-18148 (2.8), 18388 (6.3)
 - Mating Interface: 208-162001

90 Position Unsealed Hybrid Plug Assembly



Female Plug

No. of Positions	Key Options	Housing Color	Lever Swing	Part Numbers				
				Receptacle Housing	Cover	Mating Pin Housing	Mating PCB Header	
							Right-Angle	Vertical
90	A	Black	Right	2344715-1	2310337-2	-	-	-
	A	Black	Left	2344716-1	2310337-2	-	-	-

Technical Features

No. of Positions:

90 & 112

Housing Materials:

Glass filled PBT

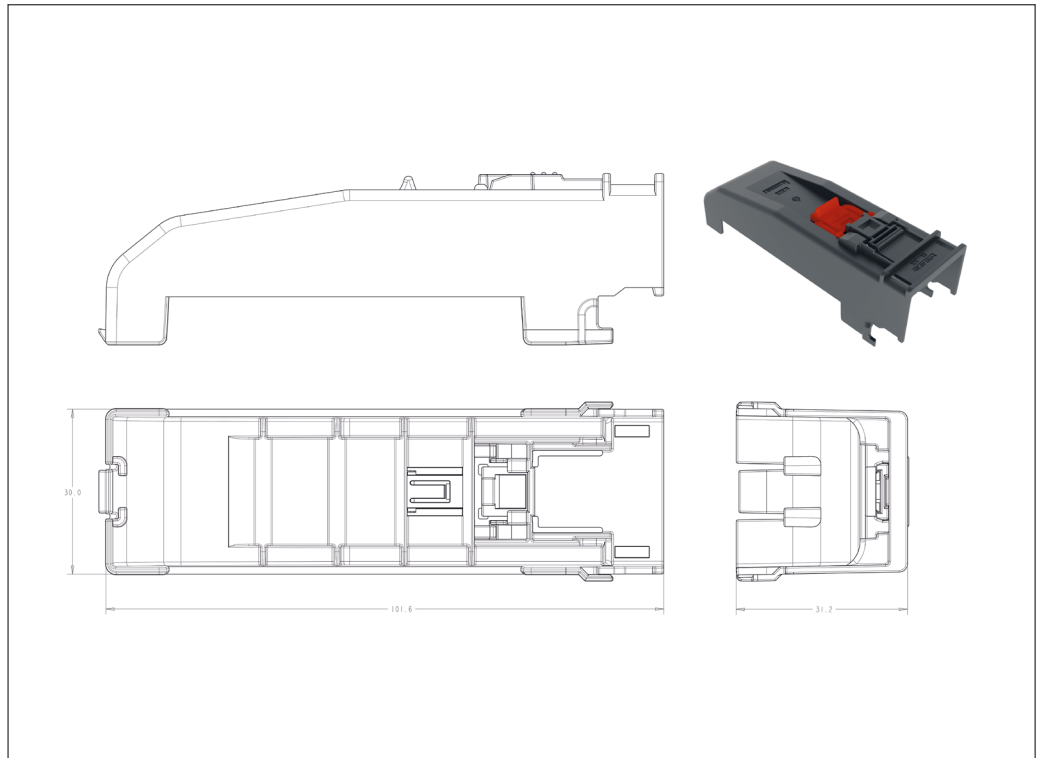
Instruction Sheet:

408-32192

Notes

- Compatible with 2344715, 2344716, 2344717, 2344718 receptacle assemblies

90 and 112 Position Wire Cover



Wire Cover

No. of Positions	Housing Color	Part Numbers				
		Cover	Mating Receptacle Housing	Mating Pin Housing	Mating PCB Header	
					Right-Angle	Vertical
90 / 112	Black	2360105-1	2344715-1	-	-	-
			2344716-1	-	-	-
			2344717-2	-	-	-
			2344718-2	-	-	-

Technical Features

No. of Positions:
112

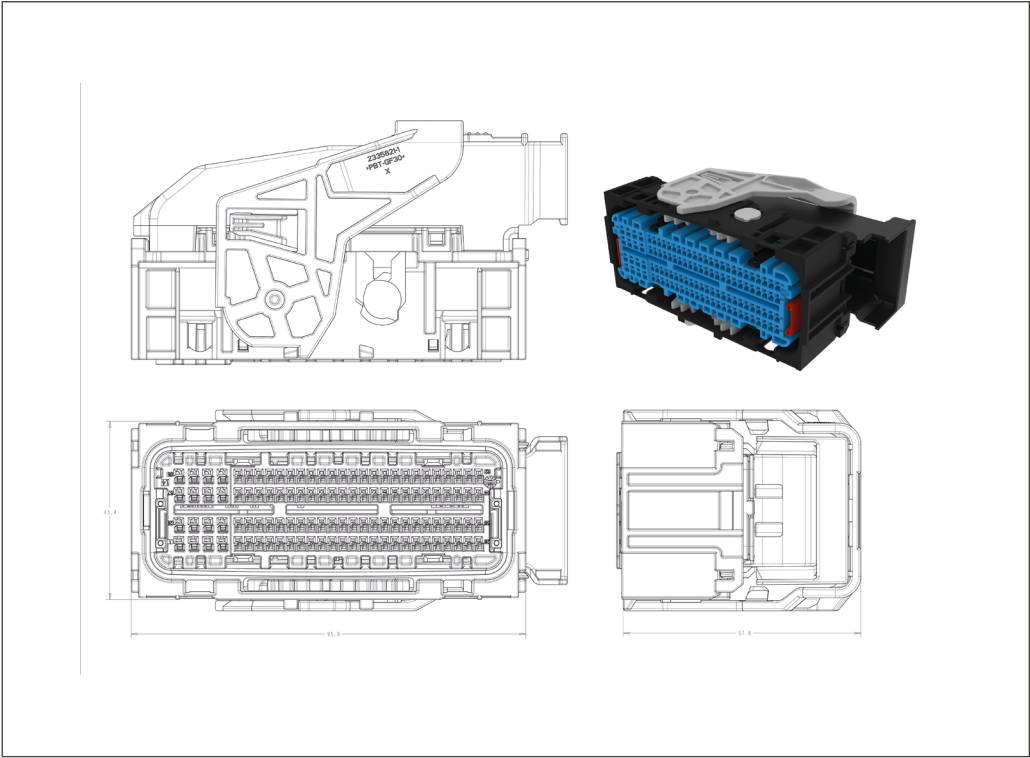
Housing Materials:
Glass filled PBT

Wire Size Range:
18-22 AWG

Instruction Sheet:
408-32192

- Notes
- Accepts TE Connectivity Generation Y 0.64 mm side orientation receptacle contact (2203242)
 - Accepts MCON 1.2 mm receptacle contact (1670144,1452503)
 - Application Specification: 114-13183 (0.64), 114-18464 (1.2)
 - Mating Interface: 208-162000

112 Position Unsealed Hybrid Plug Assembly



Female Plug

No. of Positions	Key Options	Housing Color	Lever Swing	Part Numbers				
				Receptacle Housing	Cover	Mating Pin Housing	Mating PCB Header	
							Right-Angle	Vertical
112	B	Black	Right	2344717-2	2310337-2	-	-	-
			Left	2344718-2		-	-	-

Technical Features

No. of Positions:

18, 20, 26, 32, 36

Housing Materials:

Glass filled Nylon

Wire Size Range:

18 – 22 AWG

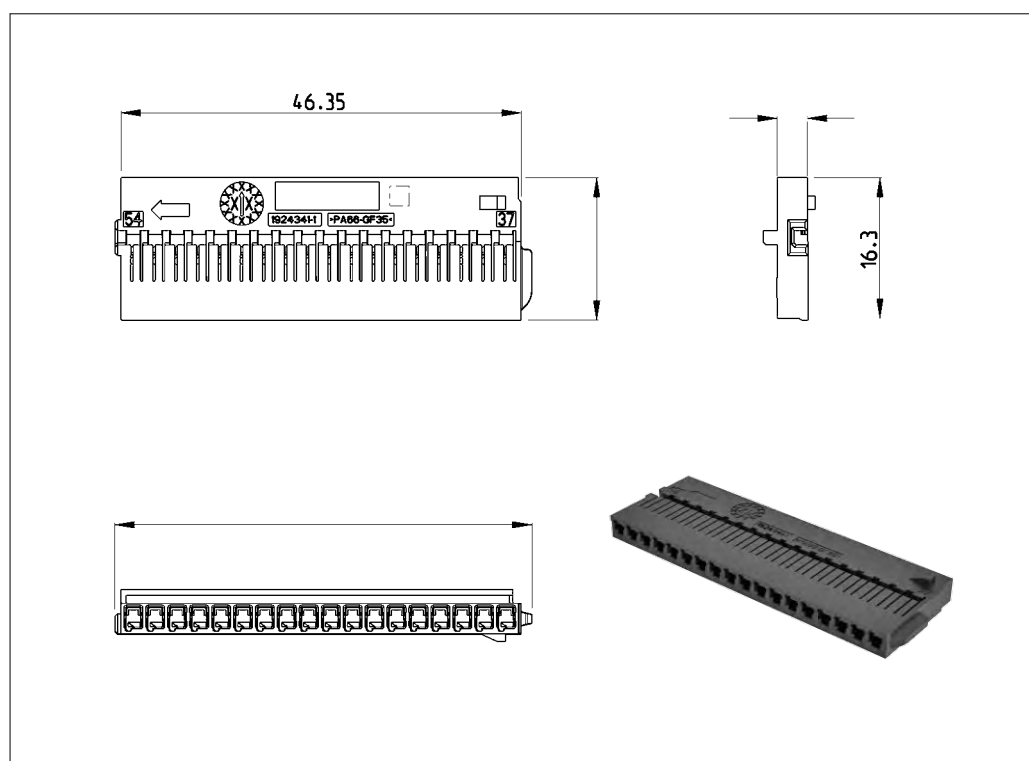
Instruction Sheet:

408-10195

Notes

- Accepts TE Connectivity Generation Y 0.64 mm top orientation receptacle contact only.
18-22 AWG
- Application Specification: 114-13183

Terminal Carrier



Terminal Carriers

No. of Positions	Used with	Keying Options	Color	Part Numbers	Dimensions		
					A	B	C
18	54p LAC Shield Assembly	A	Black	1924341-1	47.6	3.6	16.5
20	40p LAC Shield Assembly PN 2098633-1 or 2098633-2	A	Black	2098634-1 2098634-2	26.08	7.1	16.5
26	52p LAC Shield Assembly	A	Black	1924136-1	33.7	7.1	19.8
26	52p LAC Shield Assembly	B	Gray	1924136-2	33.7	7.1	19.8
26	26p Hand Mate Plug	C	Black	1924136-3	33.7	7.1	19.8
32	32p Hand Mate Plug PN 2098660-1	A	Black	2098216-1	41.7	7.1	16.5
36	54p LAC Shield Assembly	A	Black	1924340-1	47.6	6.8	16.5

Technical Features

No. of Positions:
26

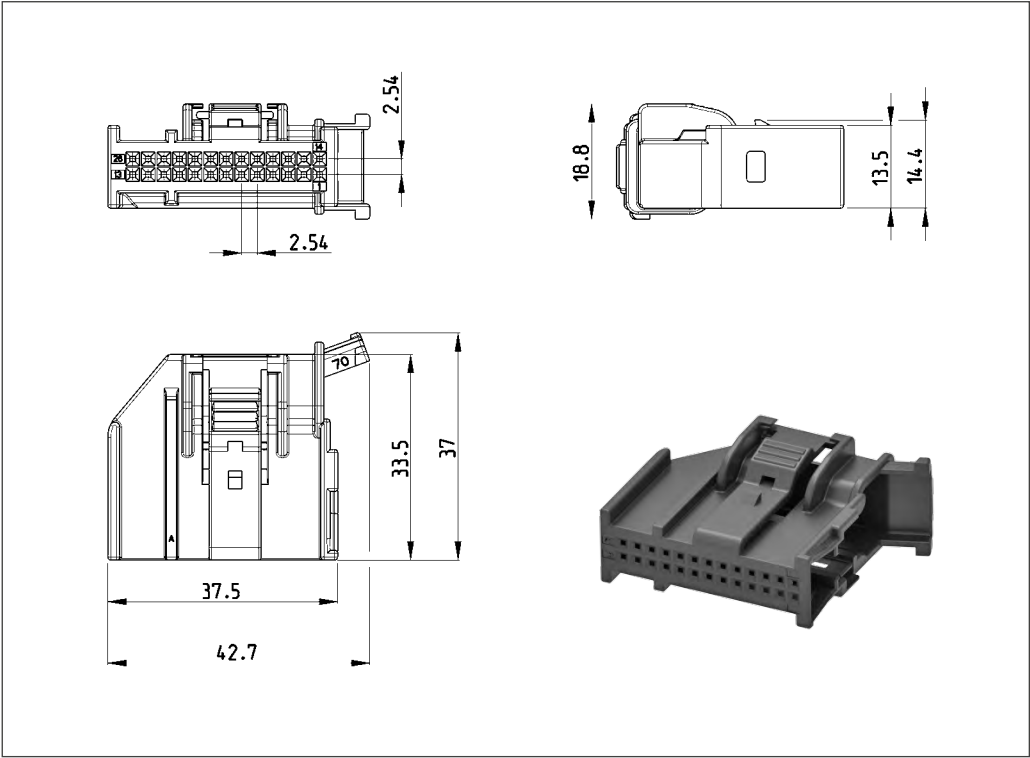
Housing Materials:
Glass filled Nylon

Wire Size Range:
18 - 22 AWG

Instruction Sheet:
408-10195

- Notes
- Used with 26p terminal carrier
Key C

26 Position Shield with Integrated Wire Routing



Shield with Integrated Wire Routing

No. of Positions	Keying Options	Housing Color	Wire Exit Angle / Direction	Receptacle Housing	Applicable Terminal Carrier	Mating PCB Header	
						Right-Angle	Vertical
26	A-E	Black	70/right	1924141-1	1924163-3	1456549-1	1924678-1
	B-E	Gray		1924141-2	1924163-3	1456549-2	1924678-2
	B-F	Blue		1924141-3	1924163-3	1456549-3	1924678-2
	A-E	Black	20/right	1924141-7	1924163-3	1456549-1	1924678-1
	B-F	Blue		1924141-9	1924163-3	1456549-3	1924678-3/-4
	A-E	Black	70/left	2378797-1	1924136-4	1456549-1	1924678-1

Technical Features

No. of Positions:

32 Positions

Housing Materials:

Glass filled Nylon

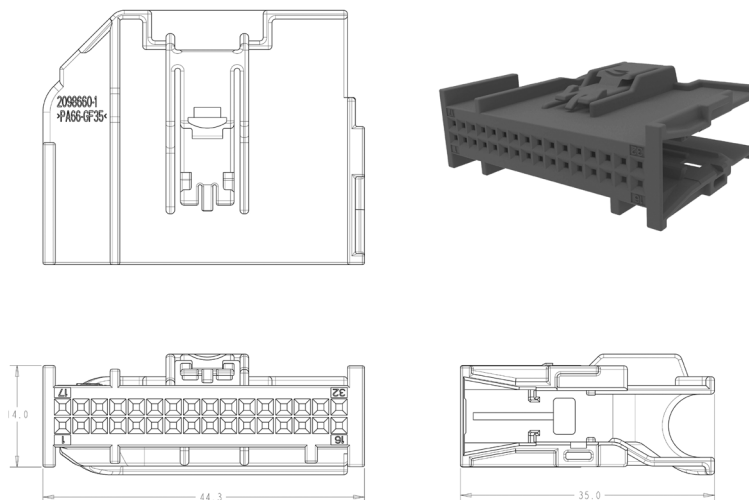
Wire Size Range:

18-26 AWG

Notes

- Used with 32p terminal carrier 2098216-1

32 Position Hand Mate Shield



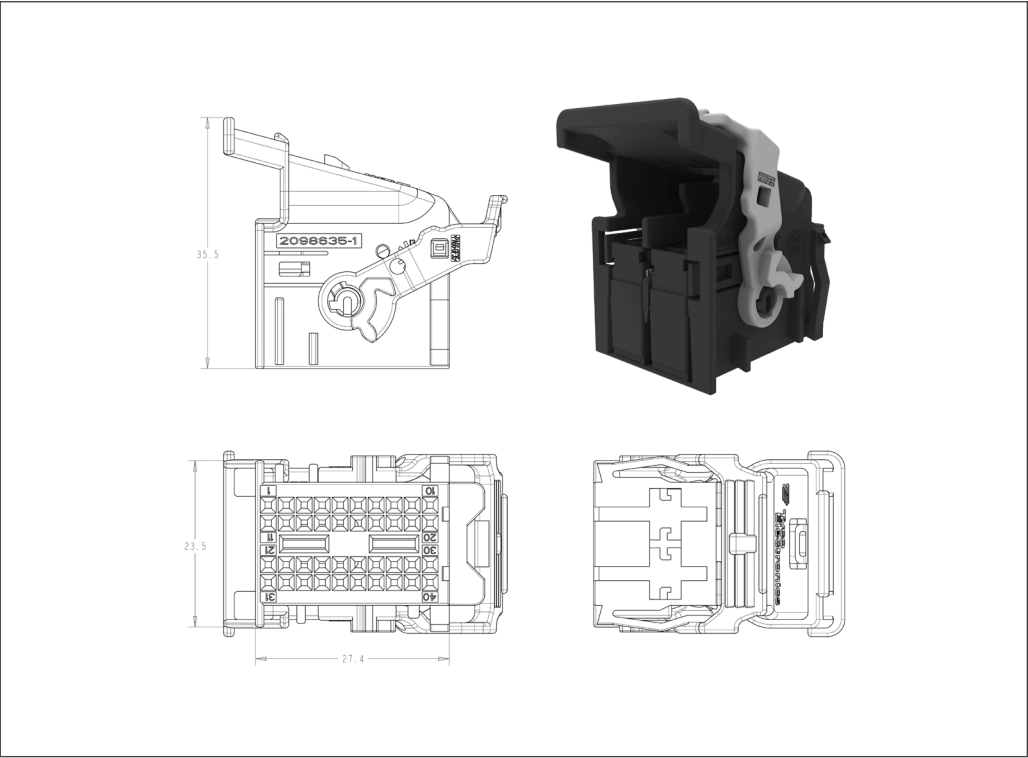
32 Position Hand Mate Shield

No. of Positions	Keying Options	Housing Color	Part Numbers			
			Receptacle Housing	Mating Terminal Carrier	Mating PCB Header	
					Right-Angle	Vertical
32	A	Black	2098660-1	2098216-1	-	-
	B	Gray	2098660-2		-	-
	C	Blue	2098660-3		-	-

Technical Features

- No. of Positions:**
40 Positions
- Housing Materials:**
Glass filled Nylon
- Wire Size Range:**
18-26 AWG
- Notes**
- Used with 20P terminal carrier 2098634-1 and 2098634-2 (requires both)
 - Mating Interface 2098633-MXCU

40 Position LAC Shield with Integrated Wire Routing



UNSEALED SHIELD ASSEMBLIES

40 Position LAC Shield with Integrated Wire Routing

No. of Positions	Keying Options	Housing Color	Part Numbers			
			Receptacle Housing	Mating Terminal Carrier	Mating PCB Header	
					Right-Angle	Vertical
40	A	Black	2098633-1	2098634-1 /-2	-	-
	B	Gray	2098633-2	2098634-1 /-2	-	-

Technical Features

No. of Positions:

52

Housing Materials:

Glass filled Nylon

Wire Size Range:

18 – 22 AWG

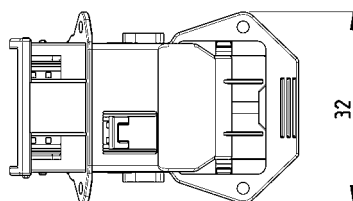
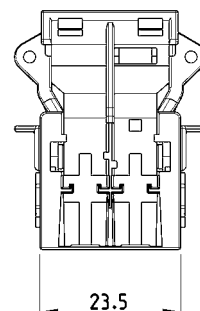
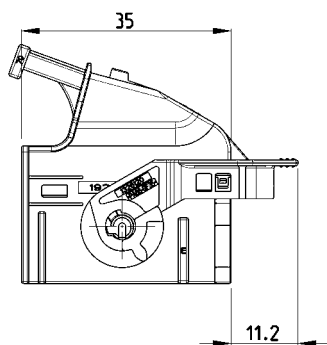
Instruction Sheet:

408-10195

Notes

- Used with two 26p terminal carriers, Key A & B
- Mating Interface: 1438985-GEN

52 Position Lever Assist Connector (LAC) Shield with Integrated Wire Routing



52 Position Lever Assist Connector (LAC) Shield with Integrated Wire Routing

No. of Positions	Keying Options	Housing Color	Wire Exit Angle	Part Numbers			
				Receptacle Housing	Applicable Terminal Carrier	Mating PCB Header	
						Right-Angle	Vertical
52	A-E	Black	70°	1924346-1	1924136-1 1924136-2	-	-
	B-E	Gray		1924346-2		-	-
	B-F	Blue		1924346-3		-	-
	A-E	Black	45°	1924346-4		-	-
	B-E	Gray		1924346-5		-	-
	B-F	Blue		1924346-6		-	-

Technical Features

No. of Positions:
54

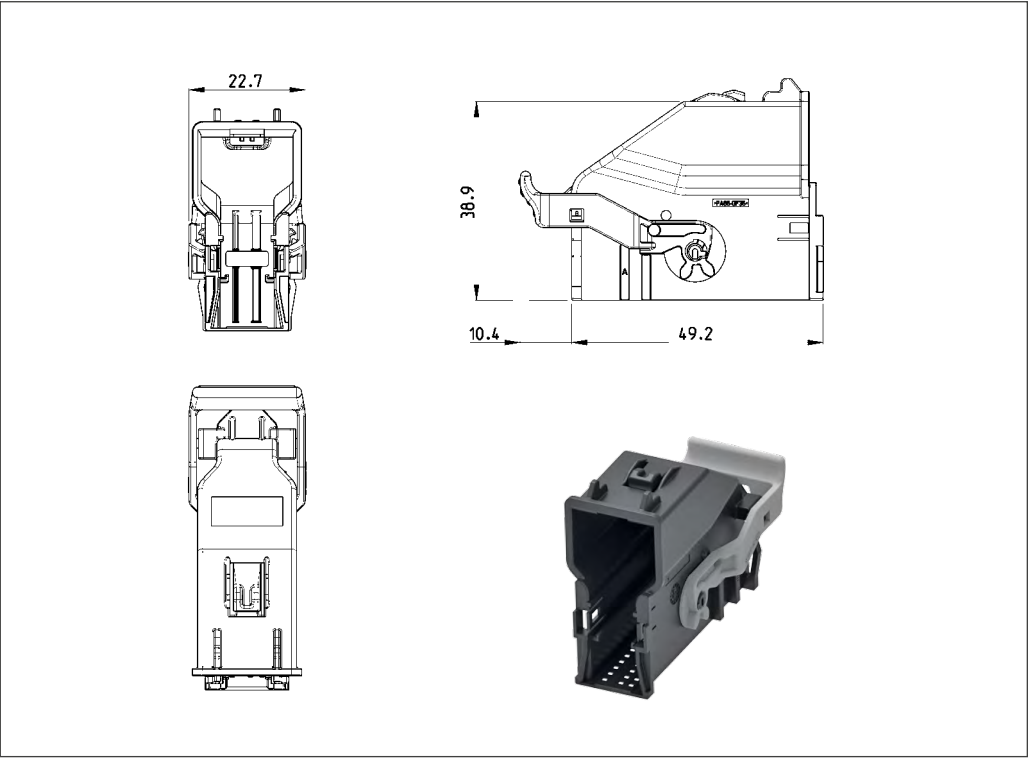
Housing Materials:
Glass filled Nylon

Wire Size Range:
18 - 22 AWG

Instruction Sheet:
408-10195

- Notes
- Used with 18p and 36p terminal carrier
 - Mating Interface: 1924337-MXCU

54 Position Lever Assist Connector (LAC) Shield with Integrated Wire Routing



UNSEALED SHIELD ASSEMBLIES

54 Position Lever Assist Connector (LAC) Shield with Integrated Wire Routing

No. of Positions	Keying Options	Housing Color	Wire Exit Angle	Part Numbers			
				Receptacle Housing	Applicable Terminal Carrier	Mating PCB Header	
						Right-Angle	Vertical
54	A-E	Black	90°	1924337-1	1924340-1 1924341-1	1924342-1	2035239-1
	A-E	Black	20°	1-1924337-3			
	B / F	Gray	90°	1924337-2			
	C / D	Blue	90°	1924337-3			

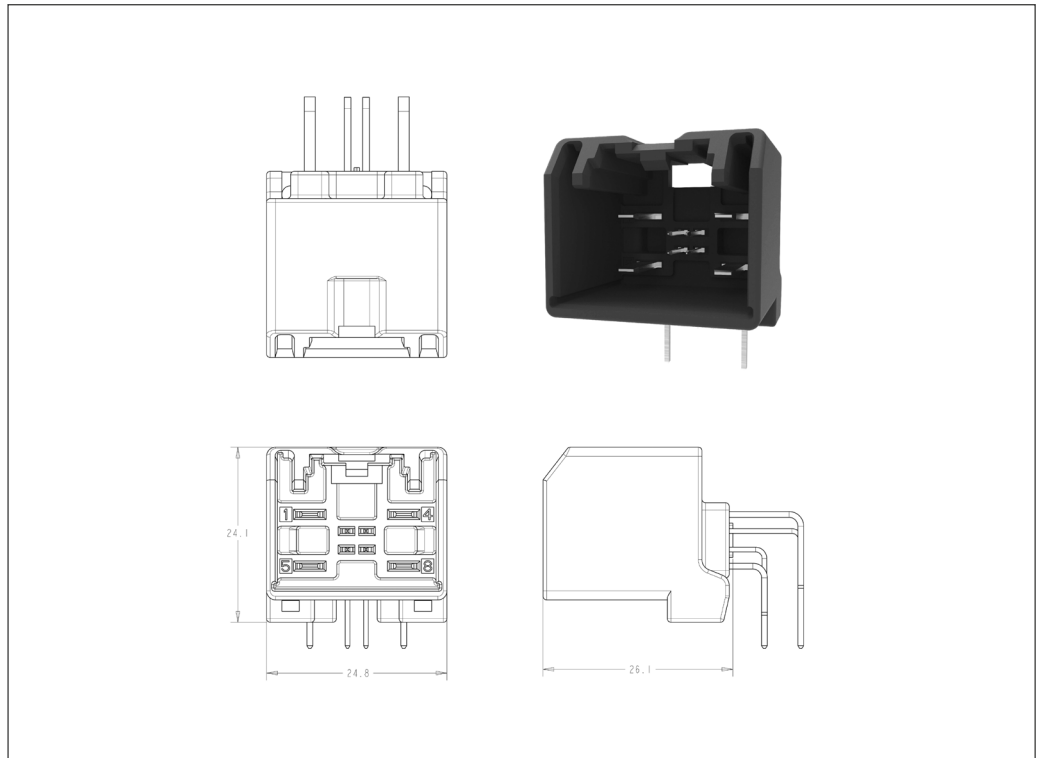
Technical Features

No. of Positions:
8 (4 x 0.64mm, 4 x 2.8 mm)

Housing Materials:
Glass filled PA66

Terminal Plating:
Tin

8 Position Hybrid Header, unsealed



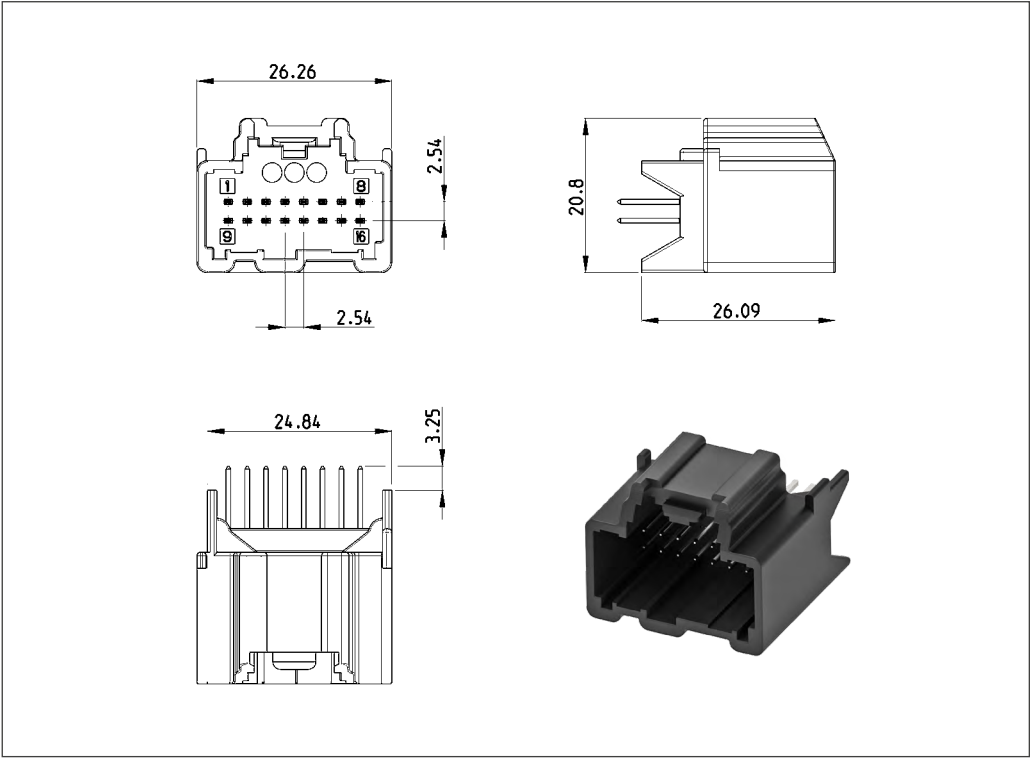
PCB Header, unsealed, right-angle

No. of Positions	Key Options	Housing Color	Part Numbers	
			PCB Header	Mating Receptacle Housing
8	A	Black	1456468-1	1456471-1
	B	Gray	1456468-2	1456471-2
	C	Black	1456468-3	1456471-3
	D	Gray	1456468-4	1456471-4

Technical Features

- No. of Positions:**
16 Positions
- Housing Materials:**
PCT
- Notes**
- Optional keying available

16 Position Vertical Header, unsealed



16 Position Vertical Header, unsealed

No. of Positions	Key Options	Housing Color	Part Numbers						
			Receptacle Housing	Cover	Locking Device	Cover and Lever	Mating Pin Housing	Mating PCB Header	
								Right-Angle	Vertical
16	C	Black	1456867-3	-	-	-	-	-	1456819-3

Technical Features

No. of Positions:

26 (26 x 0.64 mm)

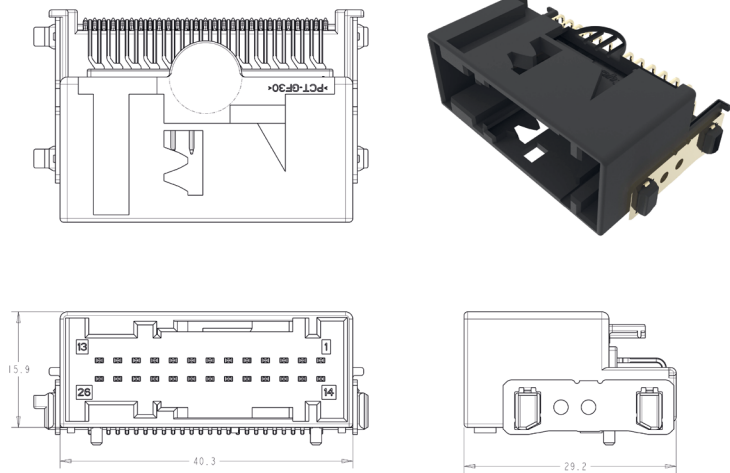
Housing Materials:

High temperature PCT

Terminal Plating:

Tin

26 Position RA SMT Header, unsealed



26 Position RA SMT Header, unsealed

No. of Positions	Key Options	Housing Color	Part Numbers	
			PCB Header	Mating Shield Assembly *
26	A-E	Black	1456549-1	1924141-1
	B-E	Gray	1456549-2	1924141-2
	B-F	Blue	1456549-3	1924141-3

* Shield assembly requires mating terminal carriers

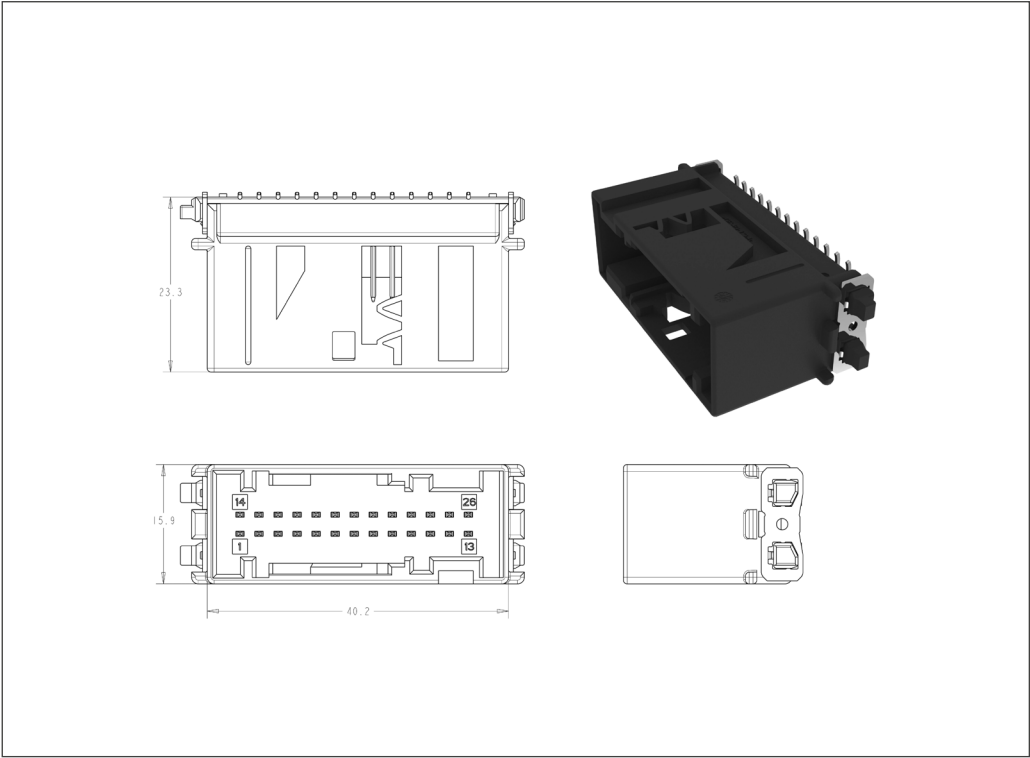
Technical Features

No. of Positions:
26 (26 x 0.64 mm)

Housing Materials:
High temperature PCT

Terminal Plating:
Tin

26 Position Vertical SMT Header, unsealed



UNSEALED PCB HEADERS

26 Position Vertical SMT Header, unsealed

No. of Positions	Key Options	Housing Color	Part Numbers	
			PCB Header	Mating Shield Assembly *
26	A-E	Black	1924678-1	1924141-1
	B-E	Gray	1924678-2	1924141-2
	B-F	Blue	1924678-3	1924141-3

* Shield assembly requires mating terminal carriers

Technical Features

No. of Positions:

32 (32 x 0.64 mm)

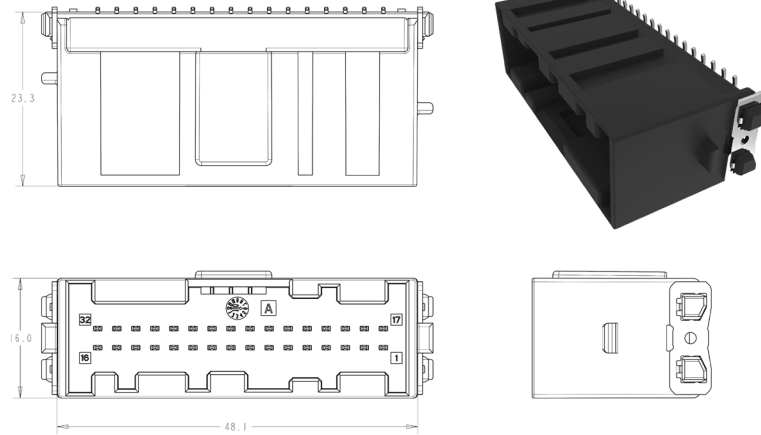
Housing Materials:

High temperature PCT

Terminal Plating:

Tin

32 Position Vertical SMT Header, unsealed



32 Position Vertical SMT Header, unsealed

No. of Positions	Key Options	Housing Color	Part Numbers	
			PCB Header	Mating Shield Assembly *
32	A	Black	2338965-1	2098660-1
	B	Gray	2338965-2	2098660-2
	C	Blue	2338965-3	2098660-3

* Shield assembly requires mating terminal carriers

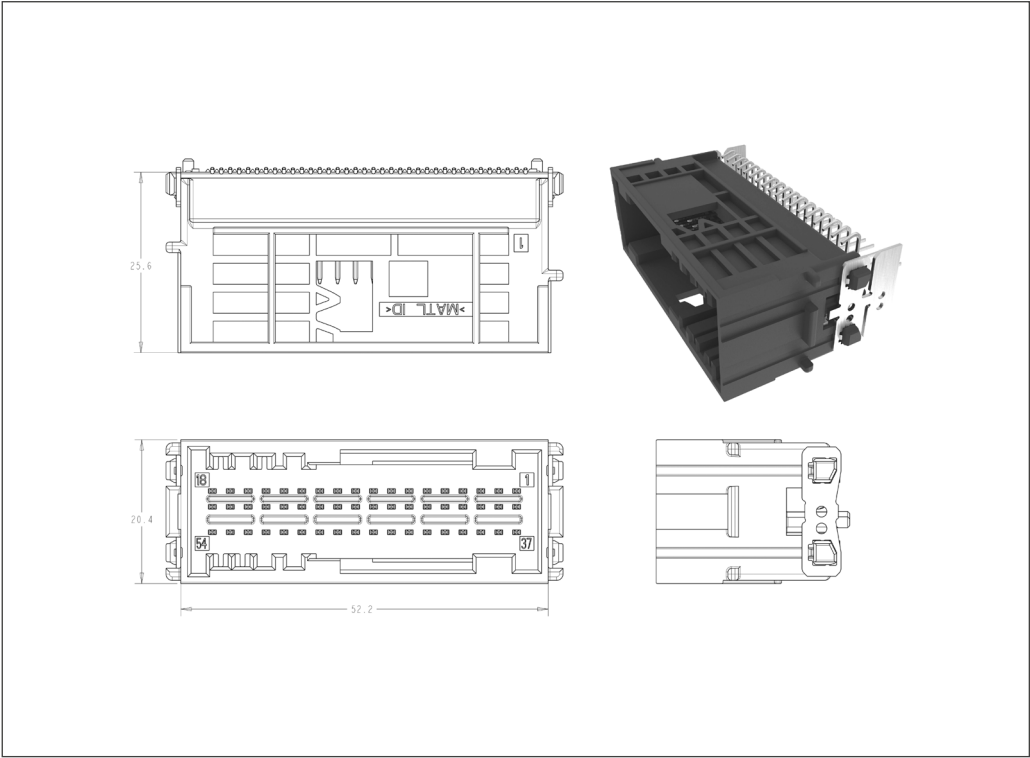
Technical Features

No. of Positions:
54 (54 x 0.64 mm)

Housing Materials:
High temperature PCT

Terminal Plating:
Tin

54 Position Vertical SMT Header, unsealed



UNSEALED PCB HEADERS

54 Position Vertical SMT Header, unsealed

No. of Positions	Key Options	Housing Color	Part Numbers	
			PCB Header	Mating Shield Assembly *
54	A-E	Black	2035239-1	1924337-1

* Shield assembly requires mating terminal carriers

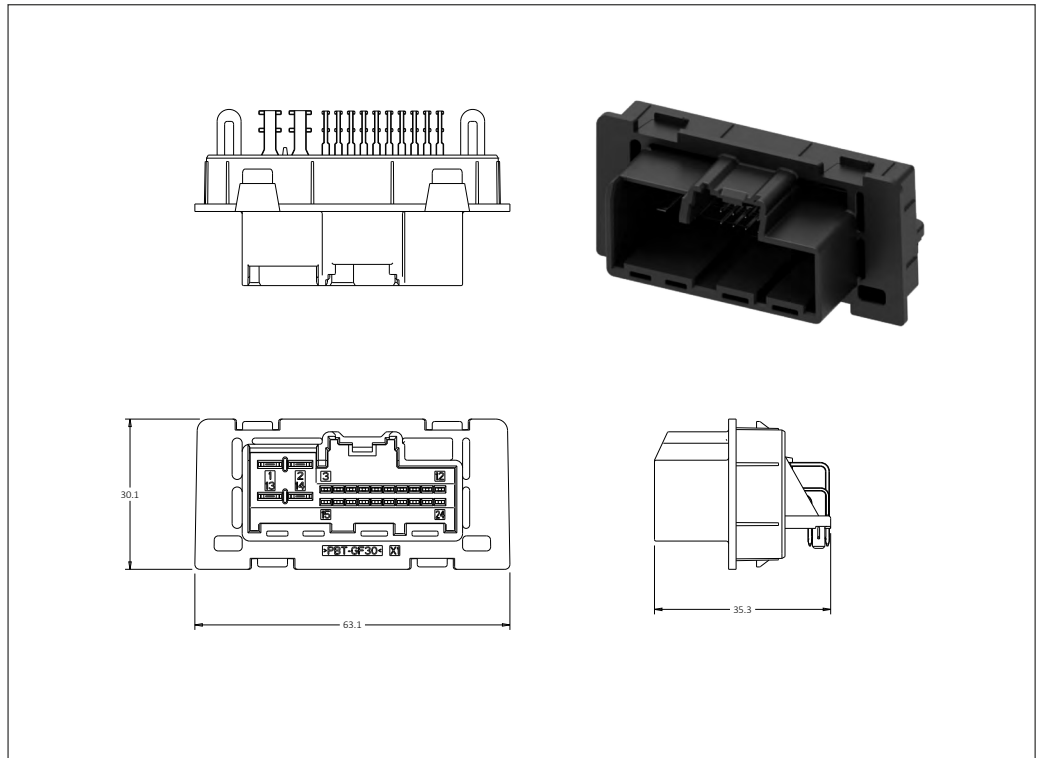
Technical Features

No. of Positions:
24 (20 x 0.64 mm, 4 x 2.8 mm)

Housing Materials:
PBT 30% GF

Terminal Plating:
Tin

24 Position Hybrid Press-Fit Header, right-angle, unsealed



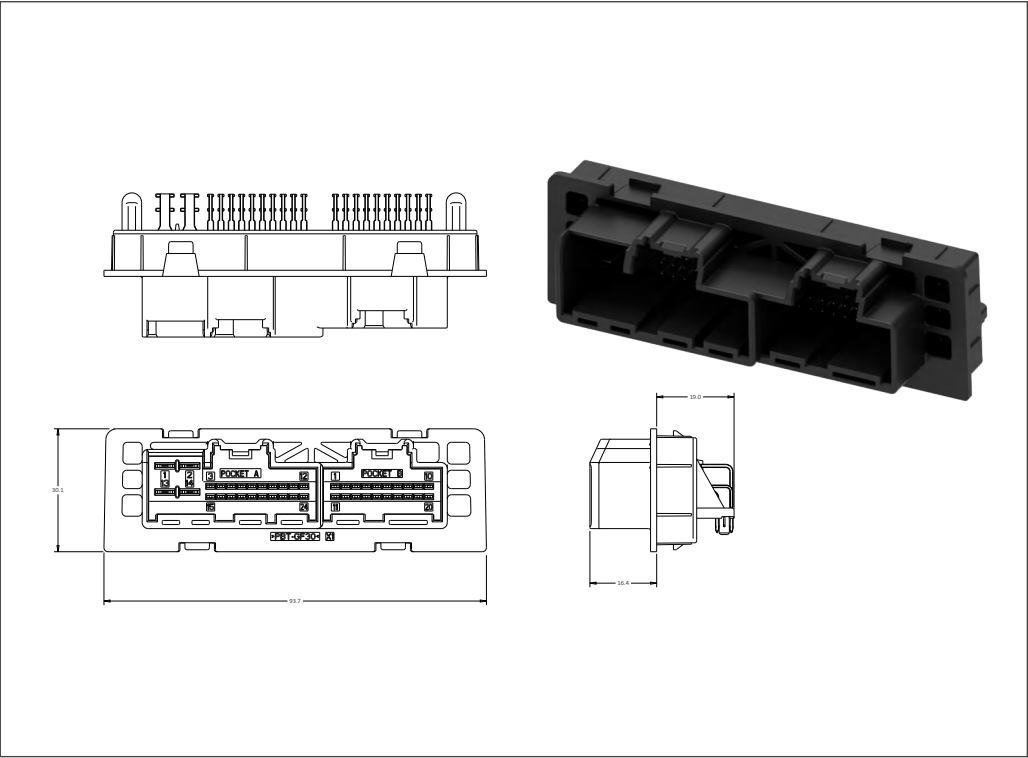
24 Position Hybrid Press-Fit Header, right-angle, unsealed

No. of Positions	Key Options	Housing Color	Part Numbers	
			PCB Header	Mating Female Assembly
24	A	Black	2288244-1	2288274-1
	B	Gray	2288244-2	2288274-2

Technical Features

No. of Positions:
44
Pocket #1 =
20 x 0.64 mm,
4 x 2.8 mm
Pocket #2 =
20 x 0.64 mm
Housing Materials:
PBT 30% GF
Terminal Plating:
Tin

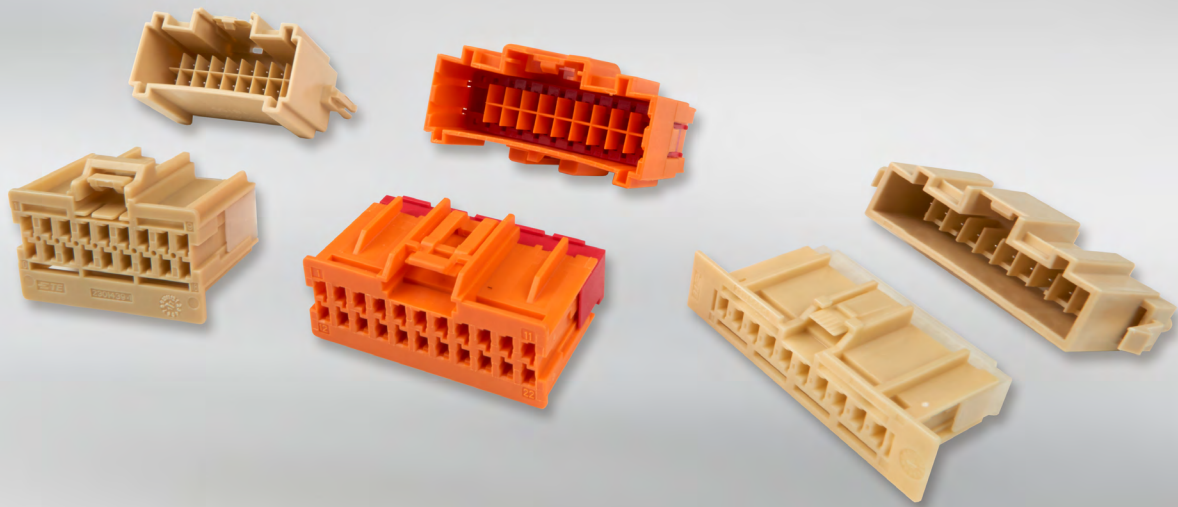
44 Position Hybrid Press-Fit Header, right-angle, unsealed



UNSEALED PCB HEADERS

44 Position Hybrid Press-Fit Header, right-angle, unsealed

No. of Positions	Key Options	Housing Color	Part Numbers		
			PCB Header	Mating 24 pos Female Assembly	Mating 20 pos Female Assembly
44	A-A	Black	2288241-1	2288274-1	2288276-1
	B-B	Gray	2288241-2	2288274-2	2288276-2



GENERATION Y HIGH VOLTAGE CONNECTORS

TE Connectivity, a world leader in connectivity and sensors, launches its Generation Y connectors for high-voltage (HV) automotive battery applications. The product extends TE's range of Generation Y connectors that can be used in HEV batteries.

The Generation Y HV connectors support a signal current range from 4 to 10.5 amps and a voltage rating of up to 432 V.

The Generation Y HV connectors feature innovative plastic barrier walls that meet IEC IP2XB, UL840 and IEC 60664 standards, provide creepage and clearance distances, as well as finger protection that is so crucial in the HV environment.

The connectors are tested according to USCAR-37 high-voltage specifications. Product options include: two 10- and 18-position plugs and PCB headers and a 22 position in-line system, available in four key codes.

Technical Highlights

- Compact packaging
- HV touch safety
- Meet UL840
- Meet IEC 60664 creepage and clearance distances
- Tested acc. to USCAR-37

Typical Applications

- Battery management systems of hybrid, all-electric vehicles.

Technical Features

No. of Positions:

10 (10 x 0.64mm)

Housing Materials:

PA66

Terminal Plating:

Tin

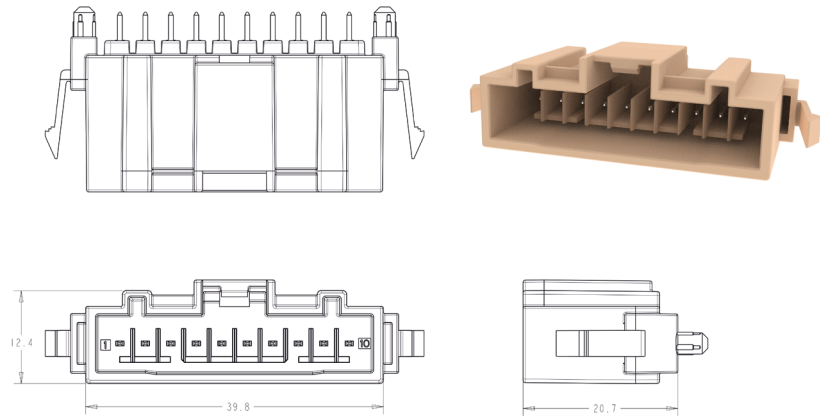
Sealing:

Unsealed

Notes

- Increased terminal pitch and barrier walls for improved creep/clearance and finger protection in HEV applications.

10 Position Vertical Header



10 Position Vertical Header

No. of Positions	Key Options	Housing Color	Part Numbers	
			PCB Header	Mating Plug Assembly
10	A	Natural	1-2315562-1	2315564-1
	B	Gray	1-2315562-2	2315564-2
	C	Green	1-2315562-3	2315564-3
	D	Blue	1-2315562-4	2315564-4

Technical Features

No. of Positions:

18 (18 x 0.64mm)

Housing Materials:

PA66

Terminal Plating:

Tin

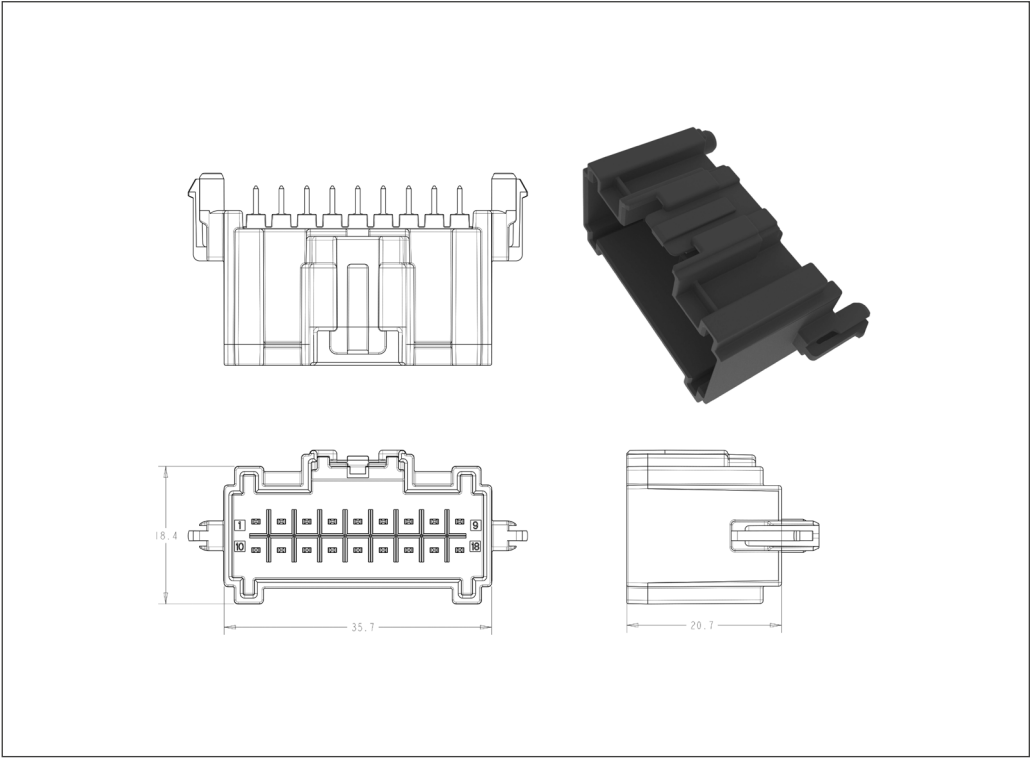
Sealing:

Unsealed

Notes

- Increased terminal pitch and barrier walls for improved creep/clearance and finger protection in HEV applications.

18 Position Vertical Header



18 Position Vertical Header

No. of Positions	Key Options	Housing Color	Part Numbers	
			PCB Header	Mating Plug Assembly
18	A	Natural	2318053-1	2322290-1
	B	Gray	2318053-2	2322290-2
	C	Green	2318053-3	2322290-3
	D	Blue	2318053-4	2322290-4

Technical Features

No. of Positions:
10 (10 x 0.64 mm)

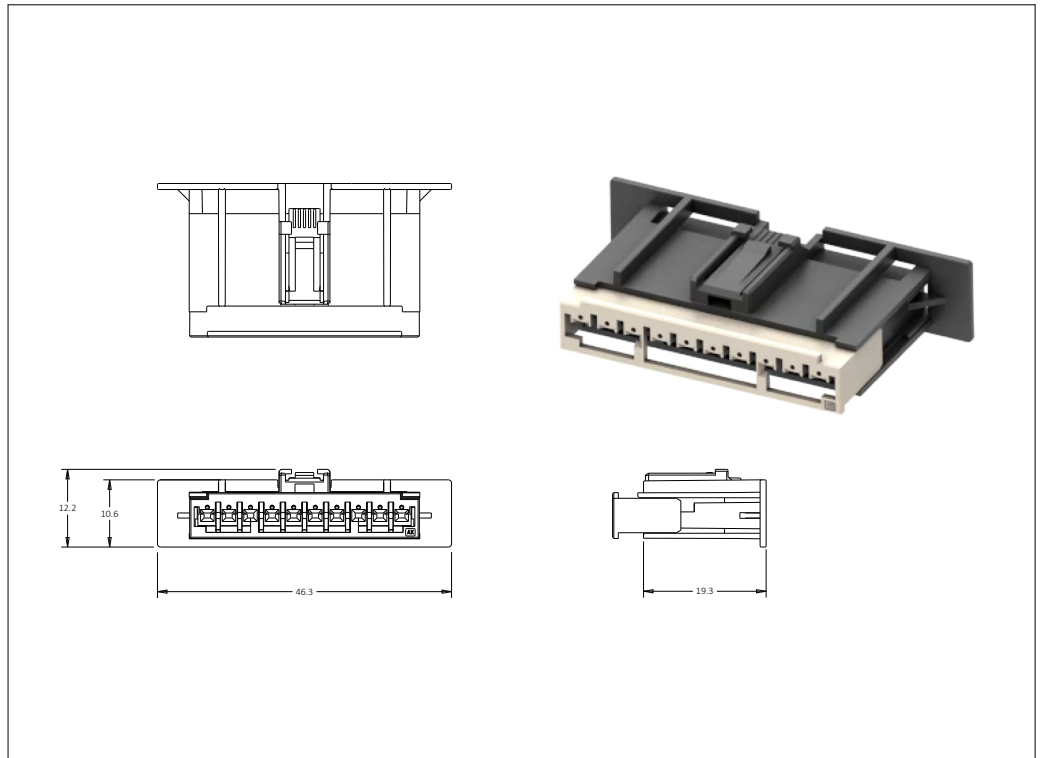
Housing Material:
Glass filled Nylon

Wire Size Range:
18-26 AWG

Notes

- Increased terminal pitch and barrier walls for improved creep/clearance and finger protection in HEV applications.
- Accepts TE Connectivity Generation Y 0.64 mm bottom orientation receptacle contact (2098762)

10 Position Plug Assembly, unsealed



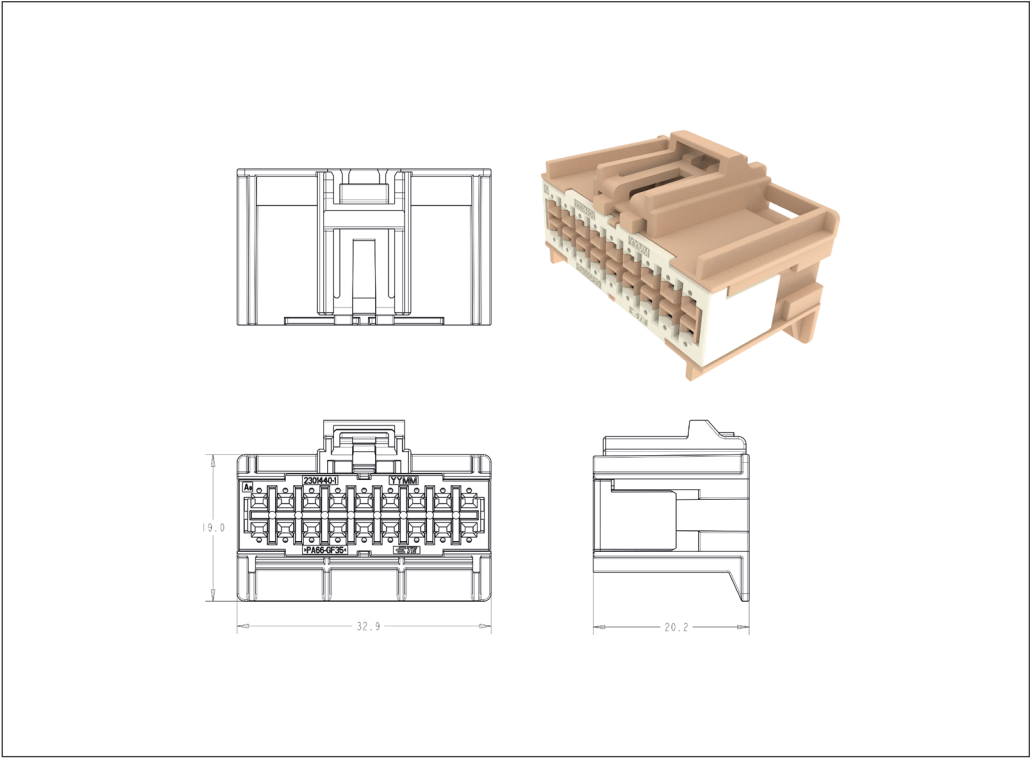
10 Position Plug Assembly, unsealed

No. of Positions	Key Options	Housing Color	Part Numbers		
			Receptacle Housing	Cover	Mating PCB Header
10	A	Natural	2315564-1	-	1-2315562-1
	B	Gray	2315564-2	-	1-2315562-2
	C	Green	2315564-3	-	1-2315562-3
	D	Blue	2315564-4	-	1-2315562-4

Technical Features

- No. of Positions:**
18 (18 x 0.64 mm)
- Housing Material:**
Glass filled Nylon
- Wire Size Range:**
18-26 AWG
- Notes**
- Increased terminal pitch and barrier walls for improved creep/clearance and finger protection in HEV applications.
 - Accepts TE Connectivity Generation Y 0.64 mm bottom orientation receptacle contact (2098762)
 - Optional CPA available

18 Position Plug Assembly, unsealed



18 Position Plug Assembly, unsealed

No. of Positions	Key Options	Housing Color	Part Numbers		
			Receptacle Housing	CPA	Mating PCB Header
18	A	Natural	2322290-1	Optional	2318053-1
	B	Gray	2322290-2		2318053-2
	C	Green	2322290-3		2318053-3
	D	Blue	2322290-4		2318053-4

Technical Features

No. of Positions:

22

Housing Material:

Glass filled Nylon

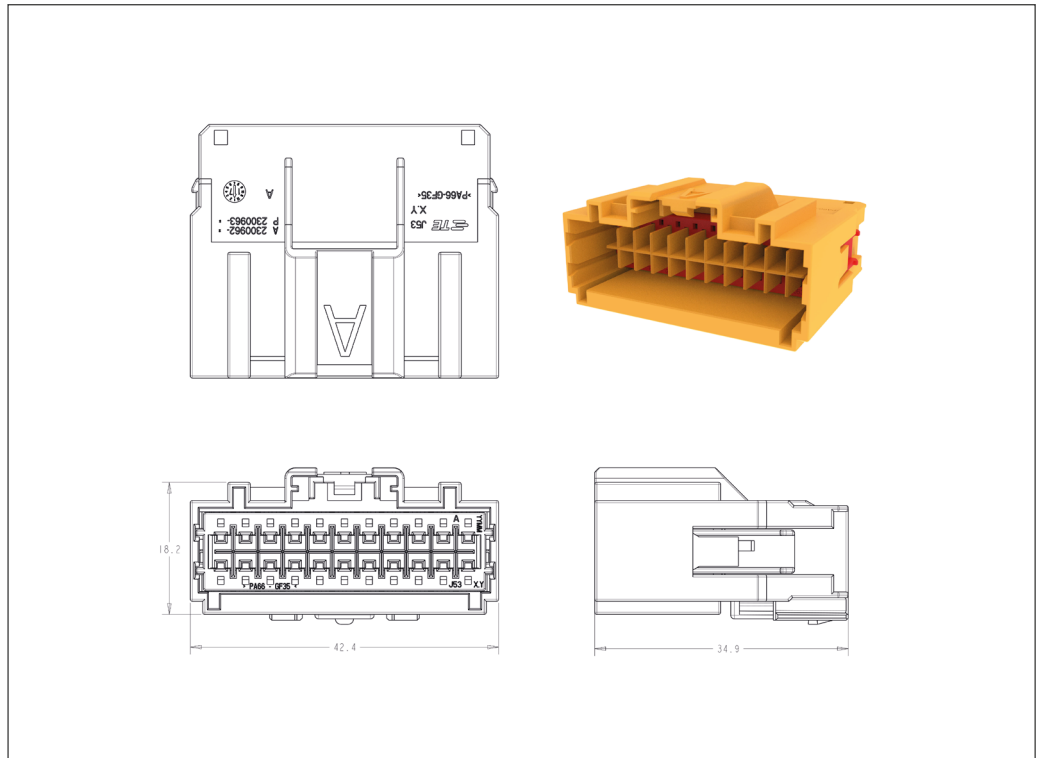
Wire Size Range:

18-26 AWG

Notes

- Increased terminal pitch and barrier walls for improved creep/clearance and finger protection in HEV applications.
- Accepts TE Connectivity Generation Y 0.64 mm male pin contact (1924968)

22 Position Inline Male Cap, unsealed



22 Position Inline Male Cap, unsealed

No. of Positions	Key Options	Housing Color	TPA Color	Part Numbers	
				Pin Housing	Mating Female Plug
22	A	Orange	Red	2300962-1	2300979-1
	B	Orange	White	2300962-2	2300979-2

Technical Features

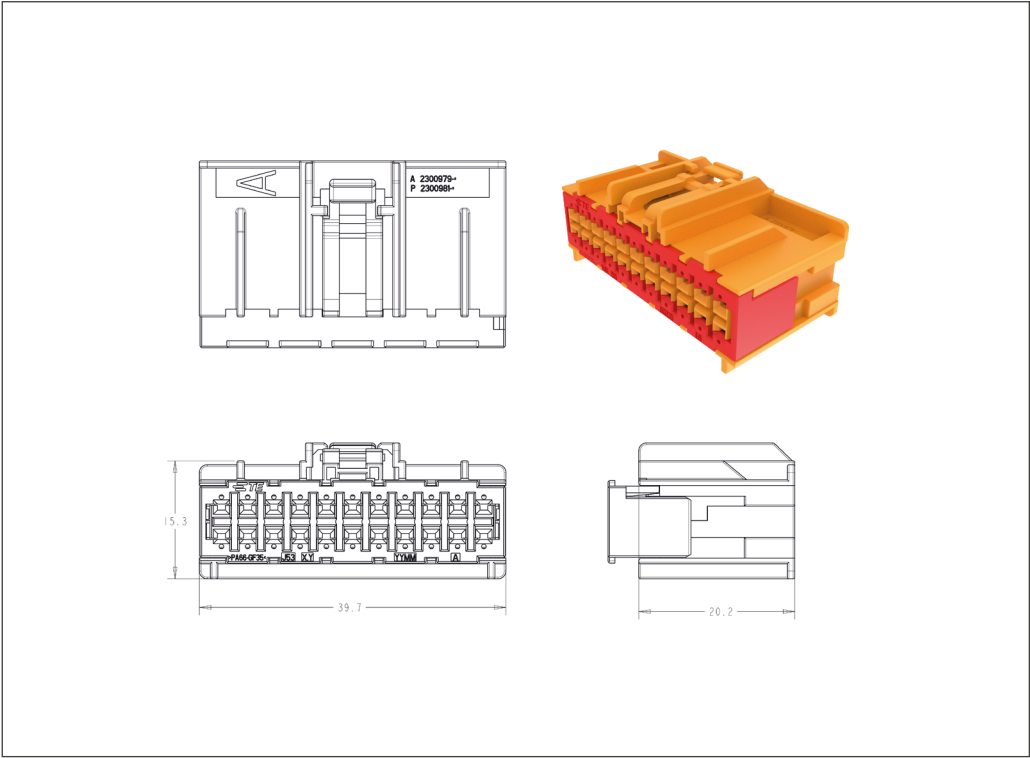
No. of Positions:
22

Housing Material:
Glass filled Nylon

Wire Size Range:
18-26 AWG

- Notes**
- Increased terminal pitch and barrier walls for improved creep/clearance and finger protection in HEV applications.
 - Accepts TE Connectivity Generation Y 0.64 mm bottom orientation receptacle contact (2098762)

22 Position Inline Female Plug, unsealed



22 Position Inline Female Plug, unsealed

No. of Positions	Key Options	Housing Color	TPA Color	Part Numbers	
				Pin Housing	Mating Female Plug
22	A	Orange	Red	2300979-1	2300962-1
	B	Orange	White	2300979-2	2300962-2



APPLICATION TOOLING

TE Application Tooling is dedicated to providing high quality equipment options to meet all levels of our connector products specifications. We are also able to provide a broad range of equipment for other manufacturer's products.

Our equipment range is vast and almost unmatched by others operating in the same industry segments, as is our global presence and support network in the form of field service engineers and product managers. We supply everything from simple hand tools to the most complex automated systems.

Equipment is segregated into two types and managed accordingly:

Generic Equipment

Where we can supply you with sufficient information referenced by part number such that you can identify and order what you need yourself.

Specialized Equipment

Where you will need help from our product managers to identify what's just right for your application.

Finding Equipment Online

tooling.te.com

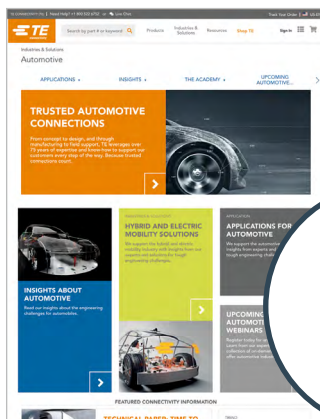
- Powerful searches to find generic equipment options (Hand Tools / Applicators).
- Brochures and more detailed flyers for the specialized equipment.
- It's quick, easy and more importantly the latest and most up to date information available online.

Regional Assistance

www.te.com/support-center

TE CONNECTIVITY ONLINE

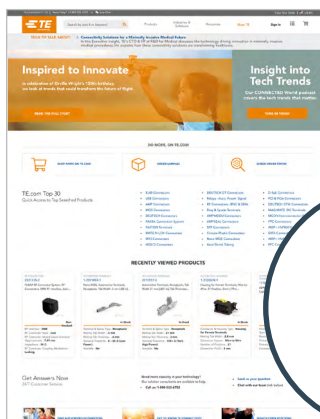
[TE.com](http://www.TE.com) offers an enhanced digital experience, with more than 250,000 parts profiled. The site has deep, rich product data and easier access to tools and services. Other offerings include improved search and navigation and knowledge and idea sharing.



TE AUTOMOTIVE

We are one of the leading providers of advanced automobile connectivity solutions. The automotive industry uses our products in automotive technologies for body and chassis systems, convenience applications, driver information, infotainment solutions, miniaturization solutions, motor and powertrain applications, and safety and security systems. TE Connectivity is developing automotive solutions to help drive innovations for designs today and into tomorrow.

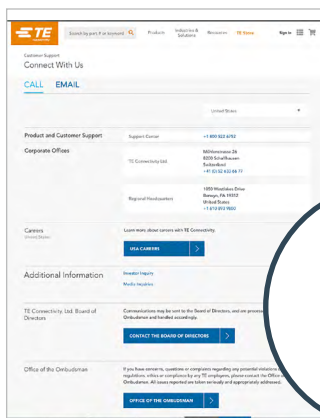
www.TE.com/Automotive



PRODUCT INFORMATION

Search for a specific product by category, part number or document number.

www.TE.com



STAY CONNECTED

You can rely on TE's PIC Team to answer your general or technical questions. To contact a PIC representative, visit

www.TE.com/support-center

EUROPE Germany Product Information Center: Phone: +800 0440-5100 Fax: +49 6251 133-1988	UNITED STATES United States – Harrisburg Product Information Center: Phone: +1 800-522-6752 Fax: +1 717-986-7575	SOUTH AMERICA South America Phone: +54 11-4733-2015 Fax: +54 11-4733-2083	AFRICA South Africa – Port Elizabeth Phone: +27 41-503-4500 Fax: +27 41-581-0440
ASIA/PACIFIC Australia – Sydney Product Information Center: Phone: +61 2-9840-8200 Fax: +61 2-9634-6188	ASIA/PACIFIC People’s Republic of China Hong Kong Phone: +852 2738-8731 Fax: +852 2735-0243	ASIA/PACIFIC People’s Republic of China Shanghai Phone: +86 21-3398-0000 Fax: +86 21-3398-1999	ASIA/PACIFIC Korea – Seoul Phone: +82 2-3415-4500 Fax: +82 2-3486-3810

DISCLAIMER

This document reflects the state-of-the-art result of the work of TE Connectivity (TE). While TE has made every reasonable effort to ensure the accuracy of the information in this document, TE does not guarantee that it is error-free, nor does TE make any other representation, warranty or guarantee that the information is accurate, correct, reliable or current. TE expressly disclaims all implied warranties regarding the information contained herein, including, but not limited to, any implied warranties of merchantability or fitness for a particular purpose. The document is subject to change without notice. Consult TE for the latest dimensions and design specifications.

TRADEMARKS

AMP MCP, Generation Y, HIRSCHMANN MOBILITY, MATE-AX, MCON, TE, TE Connectivity, TE connectivity (logo), and EVERY CONNECTION COUNTS are trademarks owned or licensed by the TE Connectivity Ltd. family of companies. USCAR is a trademark. Other product names, logos, and company names mentioned herein may be trademarks of their respective owners.

COPYRIGHT

© 2022 TE Connectivity | All rights reserved.
1654356-1 | Revision 10-2022

PUBLISHED BY

TE Connectivity Germany GmbH
Ampèrestrasse 12-14
64625 Bensheim | Germany

