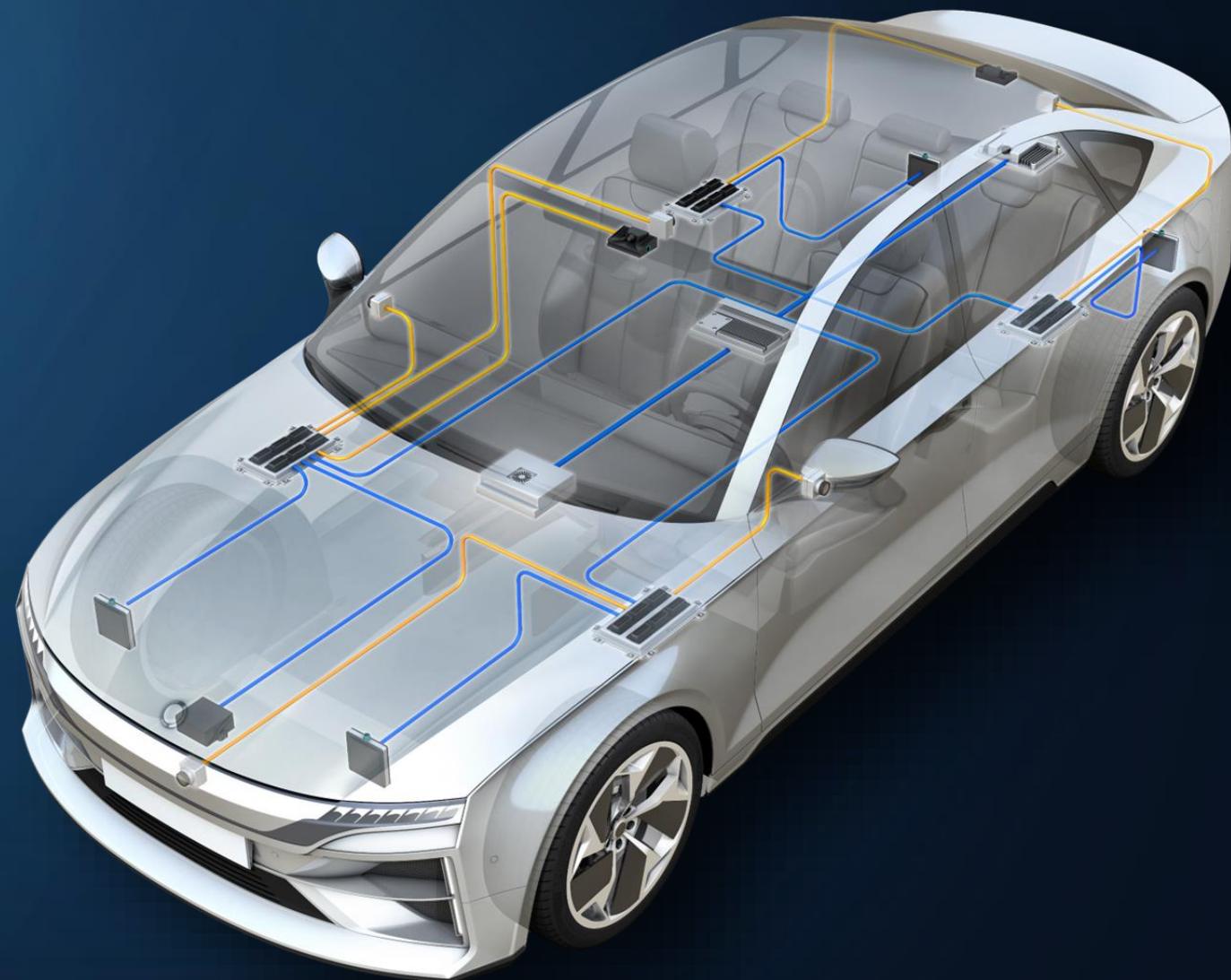


# AUTOMOTIVE CAMERA CONNECTIVITY SOLUTIONS



CLICK ON CATEGORY!



**AUTONOMOUS  
DRIVING CAMERA**



**INTERIOR CAMERA**

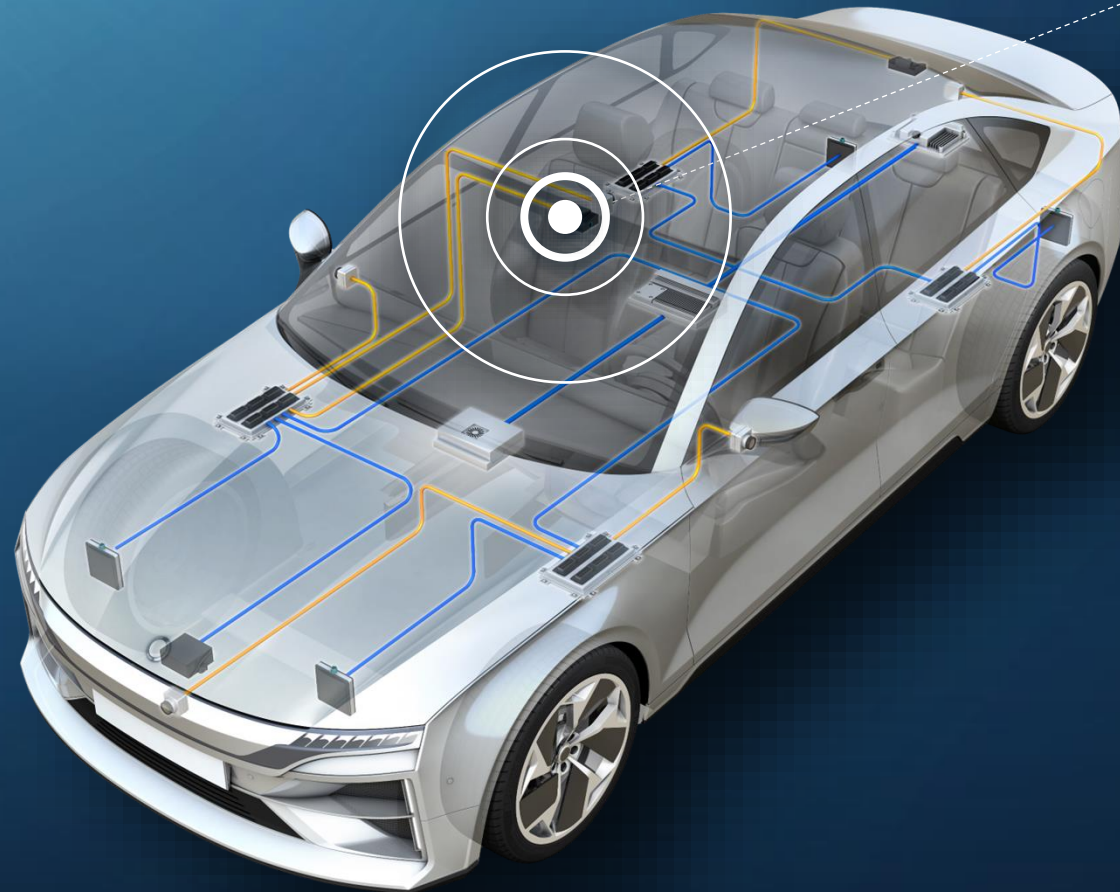


**SATELLITE CAMERA**

# AUTOMOTIVE CAMERA CONNECTIVITY SOLUTIONS



## Autonomous Driving Camera



CLICK ON SECTION!

Autonomous Driving  
Camera

Interior Camera

Satellite Camera

### Link requirements\*

- Coaxial
- Up to 12 Gbps+

### Typical protocol

SerDes



### Camera Connection

**Fixed and floating coaxial connector solutions**

Supports cameras with 12 megapixels / 60+ fps



### MATE-AX

**Miniaturized Automotive Coax Connector System**

Enabling up to 9 GHz RF performance



### FAKRA

**Coaxial Connector System**

Enabling RF performance up to 6 GHz



### Generation Y 68P

**Sealed hybrid inline connector**

Combining signal, power and data connectivity enabling up to 9 GHz RF performance



### Conductive Elastomers

**Excellent resistance to compression**

Provides superior EMI/RFI shielding performance combined with excellent environmental sealing



### Connector Gasket

**Solving Galvanic Corrosion Challenges**

Meeting the demands of EMI shielding, environmental sealing, galvanic compatibility and fuel / oil resistance

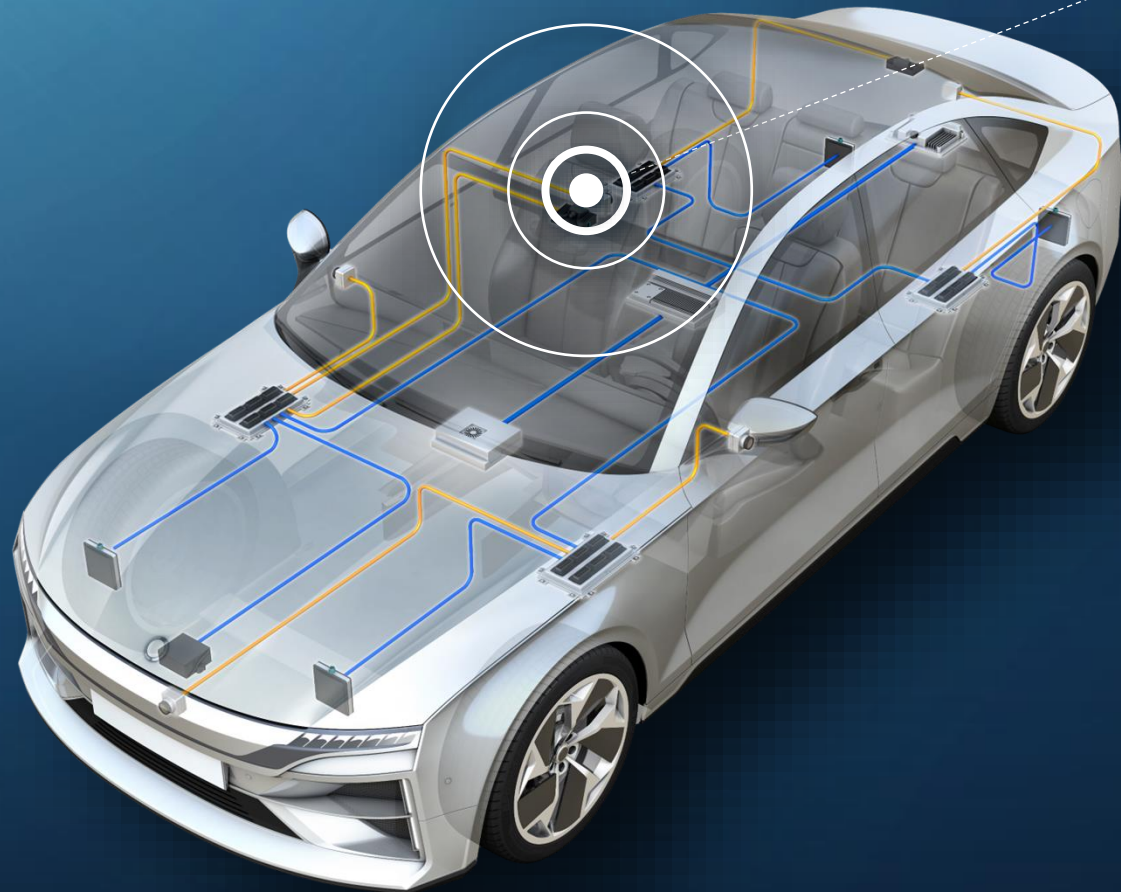
— Coaxial link

— Differential link

\*Based on 2028 requirements



# AUTOMOTIVE CAMERA CONNECTIVITY SOLUTIONS



CLICK ON SECTION!

Autonomous Driving  
Camera

Interior Camera

Satellite Camera



## Interior Camera

### Link requirements\*

- Coaxial
- 3 Gbps

### Typical protocol

SerDes



### Camera Connection

**Fixed and floating coaxial connector solutions**

Supports cameras with 12 megapixels / 60+ fps



### MATE-AX

**Miniaturized Automotive Coax Connector System**

Enabling up to 9 GHz RF performance



### FAKRA

**Coaxial Connector System**

Enabling RF performance up to 6 GHz



### Generation Y 68P

**Sealed hybrid inline connector**

Combining signal, power and data connectivity enabling up to 9 GHz RF performance



### Conductive Elastomers

**Excellent resistance to compression**

Provides superior EMI/RFI shielding performance combined with excellent environmental sealing



### Connector Gasket

**Solving Galvanic Corrosion Challenges**

Meeting the demands of EMI shielding, environmental sealing, galvanic compatibility and fuel / oil resistance

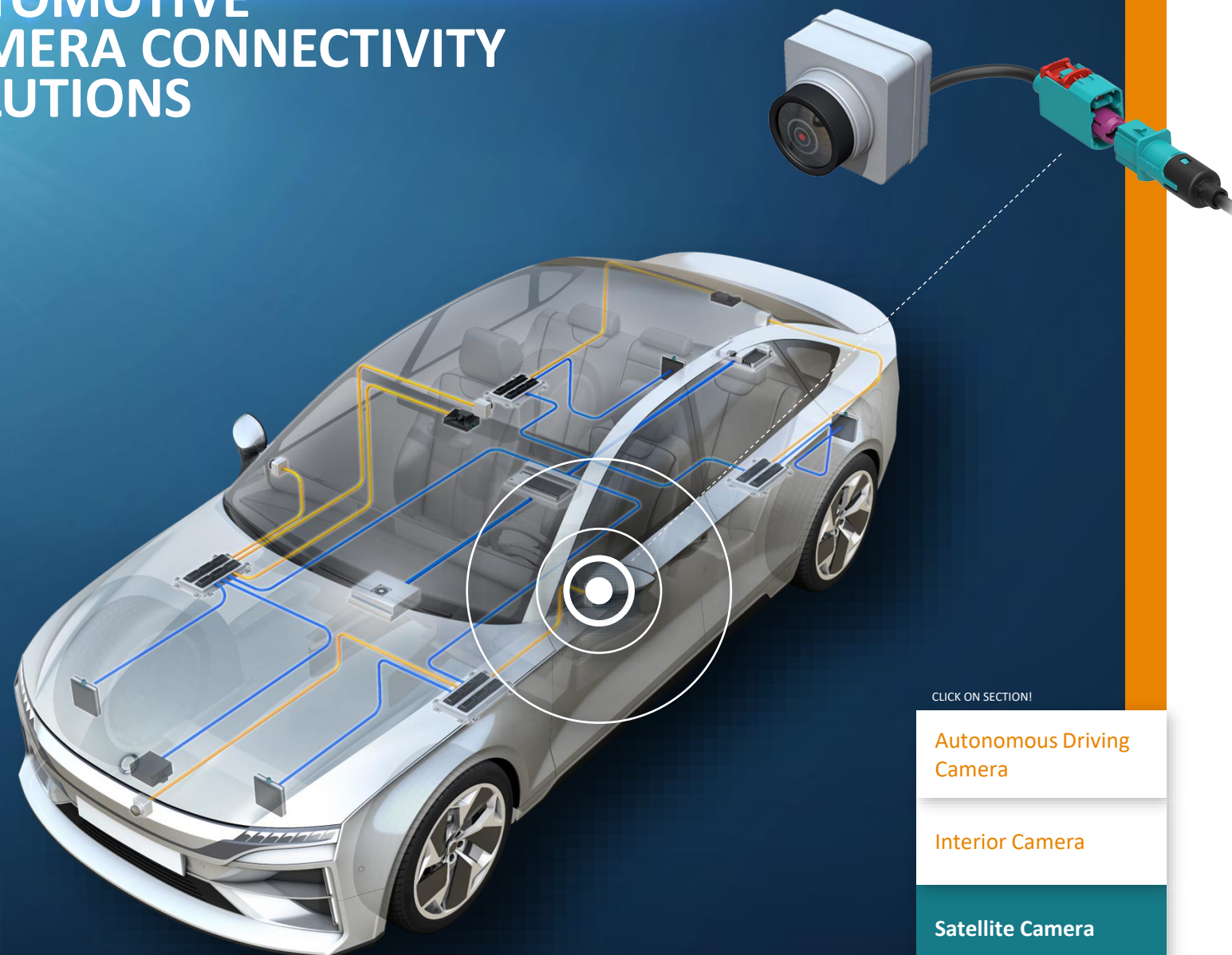
— Coaxial link

— Differential link

\*Based on 2028 requirements



# AUTOMOTIVE CAMERA CONNECTIVITY SOLUTIONS



CLICK ON SECTION!

Autonomous Driving Camera

Interior Camera

Satellite Camera

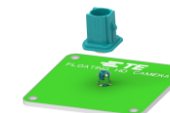
## Satellite Camera

### Link requirements\*

- Coaxial
- 8.5 Gbps

### Typical protocol

SerDes



### Camera Connection

**Fixed and floating coaxial connector solutions**

Supports cameras with 12 megapixels / 60+ fps



### MATE-AX

**Miniaturized Automotive Coax Connector System**

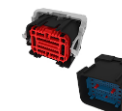
Enabling up to 9 GHz RF performance



### FAKRA

**Coaxial Connector System**

Enabling RF performance up to 6 GHz



### Generation Y 68P

**Sealed hybrid inline connector**

Combining signal, power and data connectivity enabling up to 9 GHz RF performance



### Conductive Elastomers

**Excellent resistance to compression**

Provides superior EMI/RFI shielding performance combined with excellent environmental sealing



### Connector Gasket

**Solving Galvanic Corrosion Challenges**

Meeting the demands of EMI shielding, environmental sealing, galvanic compatibility and fuel / oil resistance

— Coaxial link

— Differential link

\*Based on 2028 requirements



---

**CONNECT  
LIKE THE WORLD  
DEPENDS ON IT.  
BECAUSE IT DOES.**

---

**EVERY CONNECTION COUNTS**



© 2024 TE Connectivity Ltd. family of companies. All Rights Reserved.

TE Connectivity, TE, TE connectivity (logo), GEMnet, MATEnet, MATE-AX, NET-AX+ and EVERY CONNECTION COUNTS are trademarks owned or licensed by the TE Connectivity Ltd. family of companies. Other logos, product and/or company names may be trademarks of their respective owners.