

MCON 1.2 & HPF 1.2 CONNECTOR SERIES

ULTRA ROBUST CONNECTIVITY FOR EXTERIOR APPLICATIONS

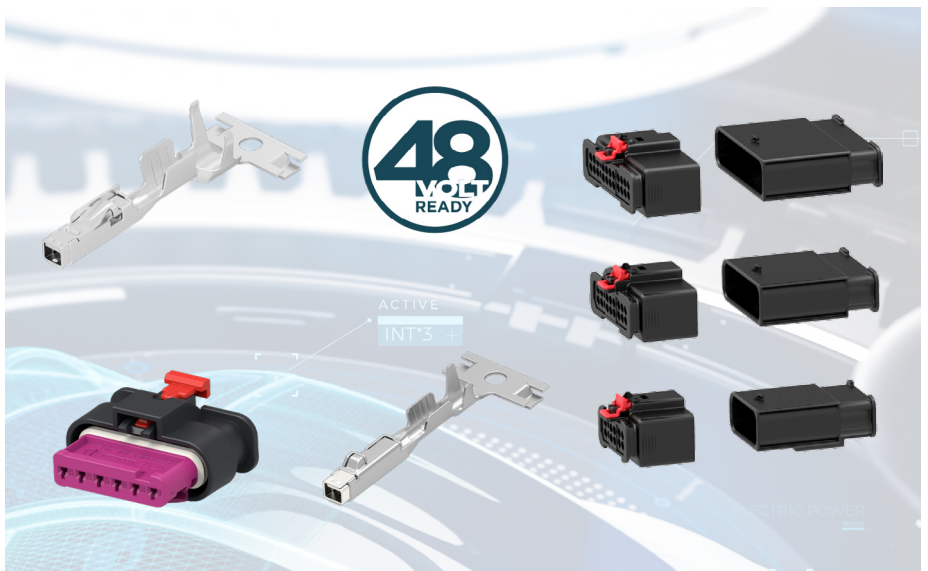
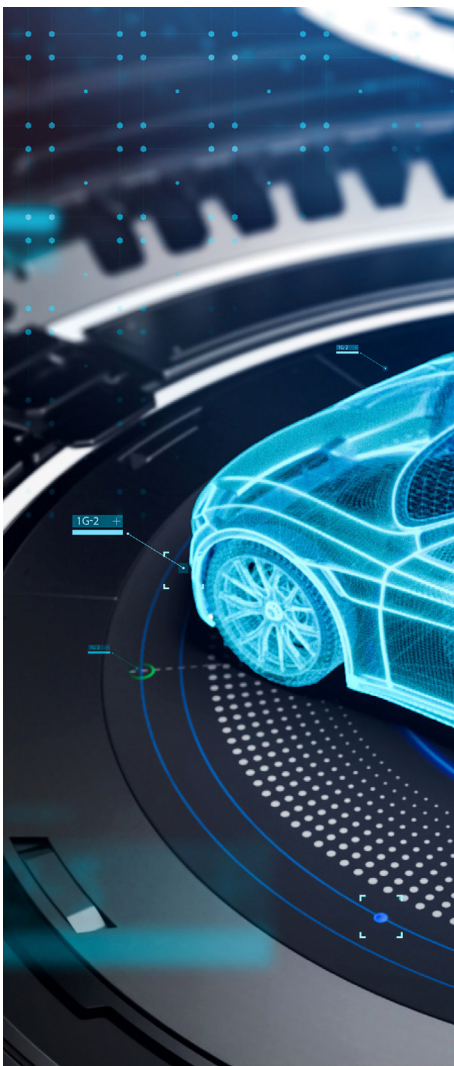


TABLE OF CONTENTS

Ultra Robust Connectivity for Exterior Applications.....3

MCON 1.2 and HPF 1.2 Terminals.....4

MCON 1.2 Connector systems.....6

 NextGen and NextGen Plus MCON 1.2 Sealed 1-Row LOCKING LANCE Housing Series.....6

 MCON 1.2 1-Row Sealed LOCKING LANCE Standard Housing Series.....7

 MCON 1.2 2-Row Sealed LOCKING LANCE Housing Series.....8

 MCON 1.2 1-Row Sealed CLEAN BODY Housing Series.....9

 MCON 1.2 One-Piece Sealed CLEAN BODY Housing Series.....10

 MCON 1.2 2-Row Sealed CLEAN BODY Housing Series.....10

 HPF 1.2 1-Row and 2-Row Sealed Housing Series.....11

Accessories.....12

 Single Wire Seals.....12

 Cavity Plugs.....13

 Blackshells.....14



Ultra Robust Connectivity for Exterior Applications

The increasing safety-critical nature of many automotive applications means connectors require a high level of robustness ensuring reliability throughout the lifetime of the vehicle. That means a fully sealed design capable of operating in temperatures up to 150°C and up to Level 6 vibration and be certified against the strictest automotive standards such as LV214 and USCAR2. It is critical that connectors and contacts be designed to avoid movement and surface layer destruction of the contact points.

In addition, connector system interfaces need to support the increasing functional sophistication of applications and a greater number of connecting wires – from 2 wires up to 24. Meanwhile, these additional connections must be realized within the increasingly constrained space.

Suitable for tab sizes of 1.2 mm x 0.6 mm, the MCON 1.2 and HPF 1.2 families incorporate a compact connector system for low power up to 17 Amps and are highly robust against harsh automotive applications. Their two-piece terminal design, separating the electrical and mechanical contact, is designed to maximize performance in high-vibration environments. Its sealed receptacle and tab housings offer IPx9K waterproofing as well as up to level 6 vibration resistance making it highly reliable for exterior chassis mounted applications.



“Electrical connectors for safety-critical exterior vehicle applications need to be ultra-robust against moisture, vibration and abrasion.”



KEY APPLICATIONS

- Suspension Control
- Transmission Control
- Window / Roof Motors
- Signal/sensing applications in engine bay, exhaust system, wheels
- Lighting
- 48V Applications (AC compressor, starter, active stabilization, electronic power steering, braking system, catalytic converter, start/stop/ heated seats)
- Low voltage inline connector systems (primary body harness, rear axle harness, door harness, headlight cable harness, interior lighting harness, bumper harness)
- Next Gen Electrical/Electronic (E/E) Architectures

BENEFITS

- Proven performance and reliability by fleet track record in the field
- Extensive footprint to support global customers in every market
- High performance copper allows for sustained performance throughout lifetime
- BluSurf Plating Technology for reduced insertion force, increased durability and increased mating cycles
- Redundant contact point technology for high vibration capability and reliability
- Contact box with polarization and secondary locking providing additional security and support
- Ideal for sealed applications
- AK and USCAR2 Interface
- Short and long shroud
- Consolidation of vehicle functions
- Space and weight reduction

FEATURES

- Locking lance and clean body terminal designs
- Industry standard 1.2mm terminal cavity capability
- High vibration level & high temperature peaks to meet future requirements
- 2-piece and mono terminals available
- Three directional secondary locking access
- Overstress protection of the contact springs
- CPA (Connector Position Assurance) capability
- Polarization, several keyings
- Modular housings available
- LV214 and USCAR2 validated
- Improved ergonomics
- Versatile – full compatibility between series
- Automation-ready and QR codes for improved ease-of-use and traceability
- Sustainable versions offering significant reduction of carbon footprint



**-40° C up to 150° C
temperature range**
(180° C with innovative
surface technology)



48V ready



IPx9K
Weather-proof rating for
exterior applications



**SG6 vibration level
supported**



BluSurf
Plating Technology



Sustainability



Automation

MCON 1.2 AND HPF 1.2 TERMINALS

MCON is a series of contact systems commonly used for electrical and electronic applications for passenger cars and commercial vehicles. The contact design meets standardized blade sizes and interface requirements of the automotive industry.

The MCON contact series is available for sealed and unsealed applications. The new generation MCON connector system offers receptacle and tab housings with capability for waterproofing and resistance to conditions of extreme vibration. For a fast and economic termination process, TE Application Tooling offers a vast portfolio of application equipment.

HPF 1.2 is the contact system of choice for the harshest and most severe vibration resistance applications. This best-in-class contact system with the related housing family enables connectivity directly mounted to combustion engines and is also perfectly suitable for high vibration load applications such as wheel speed sensing.

MCON 1.2 LOCKING LANCE High Performance Terminal Family

Tab Size: 1.2 x 0.6 mm

Vibration Resistance: Up to SG4 (LV214) in conjunction with MCON 1.2 Gen2 and 2-row

Contact Design: 2-piece design for high performance in peak conditions

Wire Size: 0.13 – 1.5 mm²

Current Carrying Capacity: Up to 17 Ampere (80° C ambient temperature)

Total Temperature Range:

-40° C - +130° C Sn (Tin Plating -1)

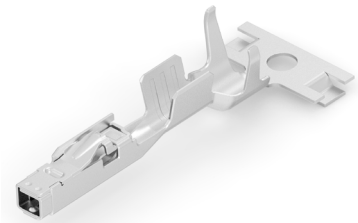
-40° C - +150° C Au (Gold Plating -2)

-40° C - +150° C Ag (Silver Plating -3)

Standards Compliance: LV214 / USCAR2

Product Specification: 108-18782

Application Specification: 114-18464



Part Numbers

Wire Size (mm ²)	Single Wire Sealed	Unsealed/(Mat Seal)	Surface Plating
0.13 - 0.22mm ²	2141970-x (Rec) 2141868-x (Tab)	2141861-x (Rec) 2141864-x (Tab)	-x -1 Sn (Tin) -2 Au (Gold) -3 Ag (Silver)
0.25 - 0.35mm ²	7-1452665-x (Rec) 1718758-x (Tab)	7-1452653-x (Rec) 5-1418758-x (Tab)	
0.50 - 0.75mm ²	7-1452668-x (Rec) 1718760-x (Tab)	7-1451656-x (Rec) 5-1418760-x (Tab)	
1.0 - 1.5mm ²	7-1452671-x (Rec) 1718762-x (Tab)	7-1452659-x (Rec) 1418762-x (Tab)	

MCON 1.2 CLEAN BODY High Performance Terminal Family

Tab Size: 1.2 x 0.6 mm

Vibration Resistance: Up to Class 4 (USCAR) in conjunction with MCON 1.2 Gen2 and 2-row

Contact Design: 2-piece design for high performance in peak conditions

Wire Size: 0.25 – 1.5 mm²

Current Carrying Capacity: Up to 17 Ampere (80° C ambient temperature)

Total Temperature Range:

-40° C - +130° C Sn (Tin Plating -1)

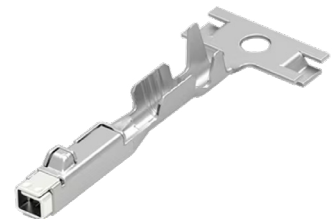
-40° C - +150° C Au (Gold Plating -2)

-40° C - +150° C Ag (Silver Plating -3)

Standards Compliance: LV214 / USCAR2

Product Specification: 108-18782

Application Specification: 114-18464

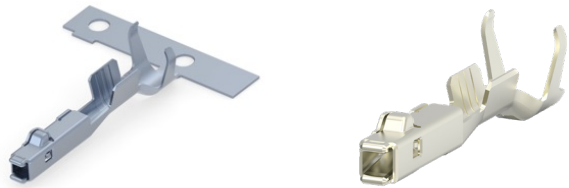


Part Numbers

Wire Size (mm ²)	Single Wire Sealed	Unsealed/Mat Seal	Surface Plating
0.25 - 0.35mm ²	1418844-x (Rec) 2141114-x (Tab)	1534594-x (Rec) 1718348-x (Tab)	-x -1 Sn (Tin) -2 Au (Gold) -3 Ag (Silver)
0.50 - 0.75mm ²	1670146-x (Rec) 2141116-x (Tab)	1670144-x (Rec) 1718350-x (Tab)	
1.0 - 1.5mm ²	1418850-x (Rec) 2177610-x (Tab)	1452503-x (Rec) 1718352-x (Tab)	

MCON MONO CLEAN BODY Terminals (Average Performance Requirements)

Tab Size: 1.2 x 0.6mm
Vibration Resistance: V1
Contact Design: 1-piece design for low insertion force
Wire Size: 0.35 – 1.0mm²
Current Carrying Capacity: Up to 17 Ampere
(80° C ambient temperature)
Total Temperature Range: -40° C - +125° C
Standards Compliance: USCAR2 / GMW3191
Product Specification: 108-32199
Application Specification: 114-32121



Part Numbers

Surface Plating	Single Wire Sealed	Wire Size (mm ²)
Tin Plating	2321539-x (Rec) 2312538-x (Tab)	-1 is 0.75 - 1.00mm ² -2 is 0.5mm ² -3 is 0.35mm ²
Silver Plating	2321537-x (Rec) 2-2321973-x (Tab)	-1 is 0.75 - 1.00mm ² -2 is 0.5mm ² -3 is 0.35mm ²
BluSurf Plating	1-2321537-x (Rec) BluSurf Plating	-1 is 0.75 - 1.00mm ² -2 is 0.5mm ² -3 is 0.35mm ²

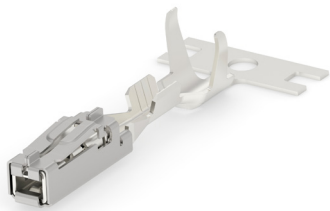


TE Connectivity (TE's) innovative BluSurf plating technology is now available for use with TE's MCON 1.2 12P-24P sealed inline connector system with TE's mono clean body contact systems, providing automotive manufactures reduced mating force by (up to 40% lower than standard terminals), increased durability and mating cycles and improved insertion force.

LEARN MORE ►

HPF 1.2 LOCKING LANCE High Performance Terminal

Tab Size: 1.2 x 0.6 mm
Vibration Resistance: Up to SG6 (LV214)
Contact Design: 2-piece design for high performance in peak conditions
Wire Size: 0.35 – 1.0 mm²
Current Carrying Capacity: Up to 17 Ampere (80° C ambient temperature)
Total Temperature Range:
-40° C - +180° C Ag (GreenSilver Plating -1)
-40° C - +150° C Ag (Silver Plating -3)
Standards Compliance: LV214 / USCAR2
Product Specification: 108-94432
Application Specification: 114-18912



Part Numbers

Wire Size (mm ²)	Single Wire Sealed	Surface Plating
0.35mm ²	2292289-1 (Rec) 2208363-3 (Rec)	-1 (GreenSilver) -3 Ag (Silver) GreenSilver Contact Surface Technology is the preferred choice for new designs.
0.50mm ²	2292290-1 (Rec) 2208362-3 (Rec)	
0.75 - 1.00mm ²	2292291-1 (Rec) 2208360-3 (Rec)	



TE's innovative scalable and sustainable GreenSilver Contact Surface Technology is now available for use with TE's HPF 1.2 high performance contact systems, enabling manufactures to meet their sustainability goals while further improving product performance.

LEARN MORE ►

MCON 1.2 CONNECTOR SYSTEMS

NextGen and NextGen Plus MCON 1.2 Sealed 1-Row LOCKING LANCE Housing Series Preferred locking lance housing family for new applications

TE has designed the next generation of ultra-robust, high-performance, sustainable 1.2mm low power connectivity for harsh automotive environments. Offering a superior and versatile product that is fully compatible with TE's MCON standard and Gen2 series, the NextGen and NextGen Plus MCON 1.2 locking lance series offers customers the largest portfolio of sealed automotive compact connectors that are LV214 and USCAR2 validated. In addition, it provides a sustainable design (reducing CO₂ footprint by approximately 20% and up to 40% with NextGen Plus), improved CPA, vibration performance, and ease of assembly.



- Receptacle housings with compatible tab connectors (for inliner applications)
- Locking Lance terminal use
- 2-8 positions (standard interface AK/USCAR)
- Vibration: SG4 (LV214)
- Temperature class: 130° C
- LV214/USCAR2 qualification
- Sustainable materials – PBT resins (20% - 50% lower CO₂ emissions)
- Improved CPA design
- Integrated secondary lock
- Large contact area for automatic locking system
- Full interface compatibility across standard series (same interface)

Positions	Female Housings			Male Housings		Temperature
	Base Part Number	Available Code Options	CPA	Base Part Number	Available Code Options	
2	2378602 / 2441392 (NextGen+)	A, B, C	Optional	1703498	A, B	130° C
3	2378603 / 2441393 (NextGen+)	A, B, C, D	Optional	1703494	A, B	130° C
4	2378604	A, B, C	Optional	1564559	A, B	130° C
5	2378605	A, B, C	Optional	2141520	A, B	130° C
6	2378606	A, B, C, D	Optional	2141324	A, B	130° C
8	2378608	A, B	Optional	1703506	A, B	130° C

ADDITIONAL VARIANTS FOR FEMALE HOUSINGS AVAILABLE

- NextGen+ (sustainable)
- 180° turned inner housing
- Version without CPA
- Customized DMC or QR code (female housings), customized customer logo on part

ADDITIONAL VARIANTS FOR MALE HOUSINGS

- Various fixation elements available

Additional Codings and Variants on Request (contact TE sales rep)

For a more detailed list of available part numbers, please refer to the MCON Portfolio Browser.

LEARN MORE ►

MCON 1.2 Sealed 1-Row LOCKING LANCE Standard Housing Series

(Fully supported legacy family. Recommended to use new MCON 1.2 NextGen/NextGen Plus Series for new applications)

- Receptacle housings with compatible tab connectors (for inline applications)
- Locking lance terminal use
- 2-8 positions (standard interface AK/USCAR2)
- Vibration: SG3
- Temperature range 130° C - 150° C
- With and without CPA
- 180° turned housing based on request



Positions	Female Housings			Male Housings		Temperature
	Base Part Number	Available Code Options	CPA	Base Part Numbers	Available Code Options	
2	1718643 1670916	A, B, C	Yes No	1703498	A, B	130° C
2	2236896	A, B, C, D, E	Optional	2236952	A, B	150° C
3	1718644 1670917	A, B, C, D	Yes No	1703494	A, B	130° C
3	2236343	A, B, C, D	Optional	2236953	A, B	150° C
4	1718645 1670918	A, B, C	Yes No	1564559	A, B	130° C
4	2294256	A, B, C, D	Optional			150° C
5	1718806 1670921	A, B, C	Yes No	2141520	A, B	130° C
5	2236898	A, B	Optional	2236954	A, B	150° C
6	1718646 1670919	A, B, C	Yes No	2141324	A, B	130° C
6	2294261	A, B, C, D	Optional			150° C
8	1719393 1670920	A, B	Yes No	1703506	A, B	130° C

ADDITIONAL VARIANTS FOR FEMALE HOUSINGS AVAILABLE

- 180° turned inner housing
- Version available with/without CPA

ADDITIONAL VARIANTS FOR MALE HOUSINGS

- Various fixation elements available

Additional Codings and Variants on Request (contact TE sales rep)

For a more detailed list of available part numbers, please refer to the MCON Portfolio Browser.

LEARN MORE ▶

MCON 1.2 2-Row Sealed LOCKING LANCE Housing Series

The 2-row connector variant extends the MCON 1.2 range offering a highly compact connector housing, with up to 12 positions in its standard connector series. In addition, a larger number of positions and other terminal cavities are available for up to 26 position in-line connections. This provides the flexibility to support any low power and signal application within the vehicle with a cost effective highly robust connector solution.

- Receptable and Tab connectors
- Locking Lance terminal use
- 4-12 positions (new AK interface)
- Vibration: SG4 validated
- According to new AK 2-row interface
- Improved audible click feature
- Temperature range 130° C



Positions	Female Housings		Male Housings		Temperature
	Part Numbers	Codings	Base Part Numbers	Codings	
4	1-2287960-5	A	1-2301519-5	A	130° C
6	1-2287965-5	A	1-2294976-5	A	130° C
8	1-2287970-5	A	1-2301520-5	A	130° C
10	1-2282337-5	A	1-2301521-5	A	130° C
12	1-2323170-5	A	1-2316338-5	A	130° C

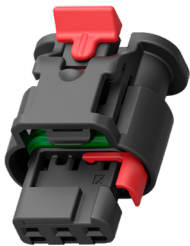
Additional Codings and Variants on Request (contact TE sales rep)

For a more detailed list of available part numbers, please refer to the MCON Portfolio Browser.

[LEARN MORE ▶](#)

MCON 1.2 1-Row Sealed CLEAN BODY Housing Series

- Receptable connectors
- Clean body terminal use
- 2-6 positions
- Vibration: V4 (USCAR2)
- Sealing: S3
- Temperature range 125° C - 150° C (T4)
- With and without CPA, Ergonomic design available



Positions	Female Housings			Temperature
	Base Part Number	Available Code Options	CPA	
2	1924067	A, B, C	Yes	125° C
3	1488991	A, B, C, D	Yes	125° C
6	1924292	A, B, C, D	Yes	125° C
2	2098557	A, B, C, E, F	Yes	150° C
2	2098641 (Side Latch)	A, B, C	Yes	150° C
3	2098541	A, B, C, D	Yes	150° C
4	1456426	A, B, C, D	Yes	150° C
6	2098559	A, B, C, D	Yes	150° C
ADDITIONAL VARIANTS AVAILABLE <ul style="list-style-type: none">• CPA Option• Side Latch available for 2p and 3p• Ergonomic/Normal• High Temp T4				

Additional Codings and Variants on Request (contact TE sales rep)

For a more detailed list of available part numbers, please refer to the MCON Portfolio Browser.

LEARN MORE ▶

MCON 1.2 One-Piece Sealed CLEAN BODY Housing Series

- Receptable and Tab connectors
- One-piece housing structure
- Clean Body terminal use
- 2-5 positions
- Temperature range 130° C - 150° C
- Vibration: V4 (USCAR2)
- Sealing: S3
- With and without CPA



Positions	Female Housings			Male Housings		Temperature
	Base Part Number	Available Code Options	CPA	Base Part Number	Available Code Options	
2	2203769	A, B, C	Yes	2203770	A, B, C	150° C
3	2203771	A, B, C, D	Yes	2203772	A, B, C, D	150° C
4	2203773	A, B, C, D, E, F, G	Yes	2203774	A, B, C, D, E, F, G	150° C
5	2203775	A, B, C, F	Yes	2203776	A, B, C, F	150° C

ADDITIONAL VARIANTS AVAILABLE

- Special version for oil pan application

Additional Codings and Variants on Request (contact TE sales rep)

For a more detailed list of available part numbers, please refer to the MCON Portfolio Browser.

[LEARN MORE](#)

MCON 1.2 2-Row Sealed CLEAN BODY Housing Series

The 2-row connector variant extends the MCON 1.2 range offering a highly compact connector housing, with 12, 18 and 24 circuit counts in its standard connector series. Combined with TE's innovative BluSurf plating technology, this new inline connector family enables the highest pin-count solution for inline connectivity without any mate-assist. Thanks to 40% reduced mating force by the BluSurf plating technology (vs. standard silver plating), this product family is not only highly robust but also cost effective, offering greater design flexibility and durability to support any low power and signal application within the vehicle



- Receptable and Tab connectors
- Clean Body Mono (one-piece) Terminal use
- 12 - 24 positions
- Vibration: V2 validated (USCAR2)
- According to new VDA 2-row interface
- Improved audible click feature
- Temperature range T3 (125° C)
- Barcode revealing CPA
- No mate-assist lever
- Optional male side pin protection plate - retractable
- 1 key tooled, protected for 4 keys
- BluSurf Plating Technology

Positions	Female Housings			Male Housings		Temperature
	Base Part Number	Available Code Options	CPA	Base Part Number	Available Code Options	
12	2382981-1	A	Yes	2382987-1	A	125° C
18	2388216-1	A	Yes	2388220-1	A	125° C
24	2388211-1	A	Yes	2388206-1	A	125° C

ADDITIONAL VARIANTS AVAILABLE

- Physical conversion kits will be created for relevant opportunities
- Key A tooled, three other key codes reserved

Additional Codings and Variants on Request (contact TE sales rep)

For a more detailed list of available part numbers, please refer to the MCON Portfolio Browser.

[LEARN MORE](#)

HPF 1.2 1-Row and 2-Row Sealed Housing Series

The modern internal combustion engine boasts a higher compression ratio and more precise control technologies, such as advanced ignition timing, fuel injection, and turbocharged downsizing. Consequently, they operate at higher temperatures compared to previous generations of internal combustion engines (ICE). Therefore, this evolution necessitates the implementation of various sensing and electronic engine control technologies that require robust electrical connections that provide new levels of vibration resistance for the proper functioning of these applications not provided by standard connectors.

- Receptable connectors
- HPF 1.2 Locking Lance terminal use
- 2-5 positions
- 1-row and 2-row design
- Vibration: **SG6** validated (LV214)
- Temperature 150° C
- Short and Long shroud



Positions	Base Part Number	Available Code Options	Shroud Variant	Temperature
2	5-2297795-X	A, B, C	Short	150° C
2	5-2297790-X	A, B, C	Long	150° C
3	5-2297811-X	A, B, C	Short	150° C
3	5-2297807-1	A	Long	150° C
4	5-2307329-1	A	Short	150° C
4	1-2310164-4	A	2-row	150° C
5	5-2307334-1	A	Short	150° C

For additional Codings and 180° C versions, contact TE sales rep.

Accessories – Reliable, Safe and Sealed Connections

SINGLE WIRE SEALS

TE Connectivity's (TE) broad portfolio offers a variety (>180) of different seals and cavity plugs for various wire sizes and connector cavities designed for automotive connector systems to effectively prevent contaminants from entering the connectors, enabling safe and reliable connections.

Thanks to our global manufacturing footprint, TE offers local-to-local supply for complete one-stop-shop sealed connector systems (terminal, connector, seal, and cavity plug). In addition, TE also provides family/mat seals, radial seals to complete your automotive connector requirements and solutions.

Single wire seals (SWS) have three different interfaces that use a multi-lip configuration that creates layers of redundant sealing. SWS elements are generally made of liquid silicon rubber that offers high mechanical resistance and can work in a wide window of operating temperatures. The material hardness is typically specified as 50-60 Shore A (ShA) durometer and is optimal in providing the necessary compression, tear resistance, and durability needed for automotive applications.



Single Wire Seals (SWS) consist of three sealing interfaces:

SEAL-TO-WIRE

Automatically placed on the wire where the outer diameter is within a well-defined range. This wire size is linked to the hole dimension of the SWS and is smaller in diameter to have geometrical interference needed to create the sealing. Seal geometry with two lips is generally adopted to provide a point-distributed sealing pressure against the cable.

Three Single Wire Seals (SWS) consist of three sealing interfaces:

- Multiple sealing surfaces are better than a continuous sealing surface due to possible cable shape defects.
- The inner lip profile assures good sealing even when the wires are bent.
- Fluid pressure drops occurs from the first lip to the second lip. For this reason, fluid infiltration is avoided.

SEAL-TO-CONTACT

The seal is crimped onto the contact. The outer diameter of the “crimping zone”, the useful length of the neck where the terminal crimp hugs the silicone, and the presence or not of a collar (defined by design) are important parameters to ensure the contact barrels close and retain the SWS without generating cuts on the surfaces. The crimp quality is fundamental to ensure a proper seal-to-contact interface.

SEAL-TO-CAVITY

The sealed contact is inserted into the cavity. The difference between the outer diameter of the seal and the cavity diameter generates a radial compression of the rubber element and the consequent sealing pressure at the interface. This interference causes additional closure pressure on the wire interface increasing the tightness level towards the cable.

Recommended Single Wire Seals (SWS) are listed below. For a complete list of suitable seals for various wire types and applications, please consult the application specification for the related terminal system or contact a TE sales representative for further assistance.

MCON 1.2 LOCKING LANCE

Wire			MCON 1.2 Locking Lance	Part Numbers			
Type	∅	Size (mm²)		SWS Part Number	SWS Color	Blind Plug Part Number / Color	
FLR ACW	1.2 - 1.4	0.35	7-1452665-3	967067-2	Yellow	967056-1	Blue
	1.4 - 1.6	0.50	7-1452668-3	967067-1	Green		
	1.7 - 1.9	0.75	7-1452668-3	967067-1	Green		
	1.9 - 2.1	1.00	7-1452671-3	967067-1	Green		
	2.2 - 2.4	1.50	7-1452671-3	2287497-1	Green		

Applicable for MCON Standard, NextGen MCON and MCON 2-row housings.

MCON 1.2 and HPF 1.2 Connector Series

MCON 1.2 CLEAN BODY

Wire			MCON 1.2 Clean Body	Cavity Diameter (3.55 mm)				Cavity Diameter (3.95 mm)			
Type	AWG	Size (mm²)		SWS Part Number	SWS Color	Plug Part Number	Plug Color	SWS Part Number	SWS Color	Plug Part Number	Plug Color
FLR FLU AWG	24	0.25 - 0.35	1418844-x	967067-1	Green	967056-1	Blue	963142-2	Grey	963143-1	White
	22			967067-2	Yellow						
	20	0.50 - 0.75	1670146-x	967067-1	Green	967056-1	Blue	963142-1	Black	963143-1	White
	18										
	18	1.00 - 1.50	1418850-x	967067-1	Green	967056-1	Blue	963142-1	Green	963143-1	White
	16										

Applicable for MCON Clean Body and Mono Clean Body

HPF 1.2 LOCKING LANCE

HPF 1.2 Part Number	Wire Cross Section mm²	Single Wire Seal Part Number	Color
2292289-1 (GreenSilver) 2208363-3 Ag (Silver)	0.35	2297816-1	White
2292290-1 (GreenSilver) 2208362-3 Ag (Silver)	0.50	2297817-1	Green
2292291-1 (GreenSilver) 2208360-3 Ag (Silver)	0.75	2297818-1	Orange
2292291-1 (GreenSilver) 2208360-3 Ag (Silver)	1.00	2297819-1	Yellow

CAVITY PLUGS

TE's cavity plugs are used to seal a single connector cavity where no contact is used and can be used in either female or male housings with some that are cavity compatible with competitor terminals. The geometrical profile is fully sealed from the single wire seal element with the exception that it does not have an inner hole for wire.

Rubber material selection is very often limited to the silicone rubber with a ShA hardness range that is generally between 50 and 60; lubricant in the rubber raw material is generally not requested to increase the seal retention into cavity, as there is not any mechanical constraint for this rubber element.



Terminal/Connector Group	Part Number	Cavity Diameter	Material	Hardness Score	Color
MCON 1.2 Locking Lance/Clean Body and HPF 1.2	967056-1	3,6 mm	Silicone	60	Blue

**BACKSHELLS (COMPATIBLE WITH MCON LOCKING LANCE
AND CLEAN BODY SERIES)**

TE's portfolio of connector backsells are designed for two orientations - right angle and straight. These can be used in cable-to-cable connector systems among others and in power and signal circuit applications where the highest protection is needed for ruggedness. Additional variants available on request.



Part Number	Description	Positions
2272162-1	MCON Wire Dress, Straight	4-position
2272163-1	MCON Wire Dress, Right Angle	4-position
2272164-1	MCON Wire Dress, Straight	3-position
2272165-1	MCON Wire Dress, Right Angle	3-position
2272168-1	MCON Wire Dress, Straight	2-position plug
2272169-1	MCON Wire Dress, Right Angle	2-position plug
2203698-1	Mate with MCON 1.2 Clean Body, Unsealed Plug	2-position unsealed plug

Contact TE sales rep for compatibility inquiries.

**FOR MORE INFORMATION ON
TE CONNECTIVITY'S LOW-MEDIUM
POWER PORTFOLIO OF MCON PRODUCTS,
VISIT TE'S MCON PORTFOLIO LANDING PAGE**



www.te.com/mcon



DISCLAIMER

While TE Connectivity (TE) has made every reasonable effort to ensure the accuracy of the information in this catalog, TE does not guarantee that it is error-free, nor does TE make any other representation, warranty or guarantee that the information is accurate, correct, reliable or current. TE reserves the right to make any adjustments to the information contained herein at any time without notice.

TE expressly disclaims all implied warranties regarding the information contained herein, including, but not limited to, any implied warranties of merchantability or fitness for a particular purpose. The dimensions in this catalog are for reference purposes only and are subject to change without notice. Specifications are subject to change without notice. Consult TE for the latest dimensions and design specifications.

TRADEMARKS

AMP MCP, MCON, TE, TE Connectivity, TE connectivity (logo), and EVERY CONNECTION COUNTS are trademarks. Other product names, logos, and company names mentioned herein may be trademarks of their respective owners.

www.te.com

© 2024 TE Connectivity. All Rights Reserved.

TE Connectivity Germany GmbH certified acc. ISO 14001 and ISO/TS 16949:2002

TE Connectivity Germany GmbH

Ampèrestrasse 12-14 | 64625 Bensheim | Germany

Phone: +49 (0)6251 133-0

Fax: +49 (0)6251 133-1600

All specifications subject to change. Consult TE Connectivity for latest specifications.