

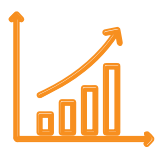


FLEXIBLE PRINTED CIRCUIT CABLE (FPC) FLEXIBLE FLAT CABLE (FFC) 300 TERMINATION SEMI AUTO MACHINE

Product Brochure

FLEXIBLE PRINTED CIRCUIT CABLE (FPC) FLEXIBLE FLAT CABLE (FFC) 300 TERMINATION SEMI AUTO MACHINE

TE Connectivity's (TE) latest crimping patent and new crimping process enables the position and posture of the terminal to be better controlled during the crimping process to avoid asymmetry. At the same time, the FPC copper foil deformation is reduced during the crimping process thereby achieving the realization of stable crimping quality. This new high-performance tool provides smart vision feature while complying with international standards and being widely adopted by multiple industries. The new termination semi auto machine monitors crimp height, crimp force, automated optical inspection (AOI), and provides higher overall equipment effectiveness (OEE). The parameter visualization provides user-friendly human-machine interface (HMI) allowing for less programming time. You can also program the number of crimping required. Individual conduct positions can be skipped.



New High Performance Tool



Quality Process Control



Highest Accuracy



Support

Key Features	Benefits
New High-Performance Tool	<ul style="list-style-type: none"> • New patented crimping process • Smart vision • Complies with international standard • Widely adopted by multiple industries
Quality Process Control	<ul style="list-style-type: none"> • Crimp force monitoring • Crimp height monitoring • Automated optical inspection (AOI) • Higher overall equipment effectiveness (OEE) • MES support • Crimp process parameter visualization
Highest Accuracy and Compatibility	<ul style="list-style-type: none"> • The new crimping process enables the position and posture of the terminal to be better controlled during the crimping process to avoid asymmetry • Individual conduct positions can be skipped • Insulation Material PEN PET PI and Color • Conduct Material Cu / Ni Cu / Au Cu / Sn 35um 70um
Service and Support	<ul style="list-style-type: none"> • Less maintenance required • Less spares needed • Less programming time needed • User friendly interface and less programming time needed • Our machines are supported by an established, experienced and responsive field service organization • Field engineers are located worldwide and are available to assist with on-site and remote service; selection and installation of new equipment; training; and technical support

Industries

- Automotive
- Industrial & Commercial Transportation
- Aerospace Defense & Marine
- Data Communications

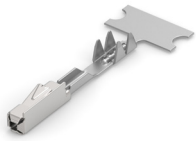
Applications

- Management systems Power Battery
- Management systems for Storage Battery
- Flat Cable Harness

Technical Details

Technical Specifications	
Working Condition Relative Humidity	10-90%
Storage Environment Relative Humidity	30 - 60%
Dimension	900 x 1200 x 1760mm
Weight	845 Kg
Voltage	220V 50Hz
Air Pressure	Min 6 bar
Nominal Crimp Speed	3 stroke/sec
Programmable Pitch	Between 1.27 mm and 5.08 mm
Maximum Width of Pressing Area	300mm
The Y Distance Difference of FPC	10mm
Straight Foil Length	50mm
Special Foil and Pitch	Available Upon Request

Current Available Product Applications



MQS Applied Connector



NanoMQS Applied Connector



PicoMQS Applied Connector



AMPMODU Interconnect System

Visual Inspection of Terminal Crimping Effect

- Terminal Angle Detection
- Distance from terminal centerline to copper centerline
- Terminal deformation and terminal presence detection
- Distance from the top of the terminal to the edge of the foil

Ordering Information

Specifications	
PN 2413730-3	FFC 300 Semi-Auto Machine
PN 2475642-1	FFC 300 Tooling Kit for 487406
PN TBD	FFC 300 Tooling Kit for - Terminal

Connect With Us

Our tooling is supported by an established, experienced and responsive field service organization. TE Connectivity field engineers are located worldwide and are available to assist with on-site and remote service; selection and installation of new equipment; training; and technical support. Service agreements are available to provide protection and support for all your application tooling equipment.

Contact Us

Phone: Americas 1-800-722-1111

EMEA 49-6151-607-1518

APAC 86-021-3325-9030

Tooling Portfolio: tooling.te.com

Field Service: te.com/fieldservice

te.com

TE Connectivity, TE Connectivity (logo) and Every Connection Counts are trademarks. All other logos, products and/or company names referred to herein might be trademarks of their respective owners.

The information given herein, including drawings, illustrations and schematics which are intended for illustration purposes only, is believed to be reliable. However, TE Connectivity makes no warranties as to its accuracy or completeness and disclaims any liability in connection with its use. TE Connectivity's obligations shall only be as set forth in TE Connectivity's Standard Terms and Conditions of Sale for this product and in no case will TE Connectivity be liable for any incidental, indirect or consequential damages arising out of the sale, resale, use or misuse of the product. Users of TE Connectivity products should make their own evaluation to determine the suitability of each such product for the specific application.

©2024 TE Connectivity. All Rights Reserved.

03/24