

# MAG-MATE TERMINALS

## ACCOMMODATING MORE SIZES OF AL AND CU MAGNET WIRE

MAG-MATE terminals are insulation displacement connection (IDC) terminals for copper and aluminum magnet wire terminations. This addition to the product line accommodate single or double 25-24 AWG (0.45-0.50mm dia.) aluminum magnet wires or 27-24 AWG (0.38-0.50mm dia.) copper magnet wires. MAG-MATE terminals with this wire capacity are designated as slot ID 9.

The slot ID 9 parts are available as a poke-in terminal that accepts a 20-18 AWG (0.5-0.8mm<sup>2</sup>) solid or fused stranded lead wire or a poke-in tab, or as a combination terminal that accepts a poke-in wire as well as offering a 187 series FASTON tab as an input/output option.

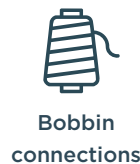
As with other MAG-MATE terminals, these are designed to be inserted into specified cavities in bobbins or housings by MAG-MATE terminal insertion machines, precisely positioning the magnet wires within the “U” shaped termination slots. The clean metal-to-metal interface produces stable, gas-tight electrical terminations free of oxides and other contaminants. No pre-stripping of the magnet wire is required, and there is no high temperature soldering or welding process that might damage heat-sensitive wiring or components.

Of course, a broad range of existing MAG-MATE and mini MAG-MATE terminals are available for use with magnet wire ranging from 52-12 AWG (0.254-2.05mm dia.).

### KEY FEATURES AND BENEFITS

- Terminates film-insulated copper and aluminum magnet wire
- Helps to eliminate need for pre-stripping conductors
- Accommodates 25-24 AWG (0.45-0.50mm dia.) aluminum wire or 27-24 AWG (0.38-0.50mm dia.) copper wire
- Simultaneously terminates two magnet wires of the same size in one terminal (for splicing or bi-filing)
- Helps to eliminate soldering or welding processes that might damage heat-sensitive wiring or components

### APPLICATIONS



### TECHNICAL DETAILS

- Material: Tin plated brass
- Product Specification: [108-2012](#)
- Application Specification: [114-2046](#)

## PART DETAILS

## MAG-MATE TERMINAL AND CAVITY



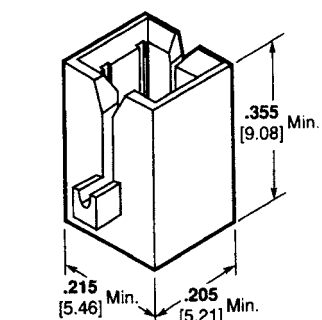
**Up to 4 contact points**  
for magnet wire

Up to 2 magnet wires of the same diameter

Cavities are either integrated into coil bodies or especially designed cavity housings.

## TYPICAL PLASTIC CAVITY

For reference only. Not a purchased item.  
Manufacture only according to TE specification.

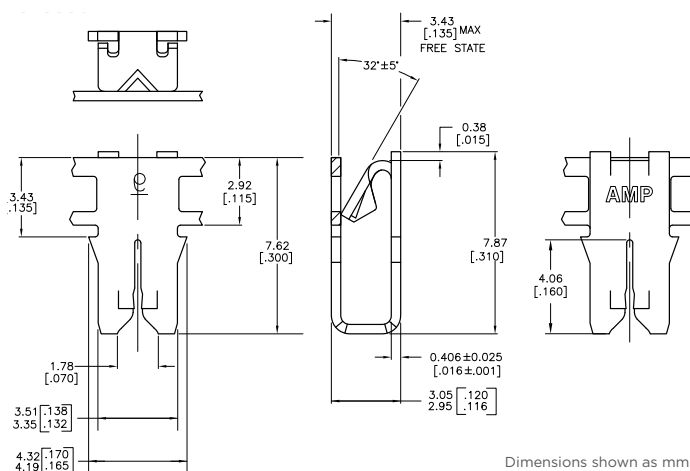


Cavity Size 2 .300 [7.62]  
Box MAG-MATE  
(Application Spec. [114-2046](#))  
Dimensions shown as in [mm].

## OUTLINE DIMENSIONS

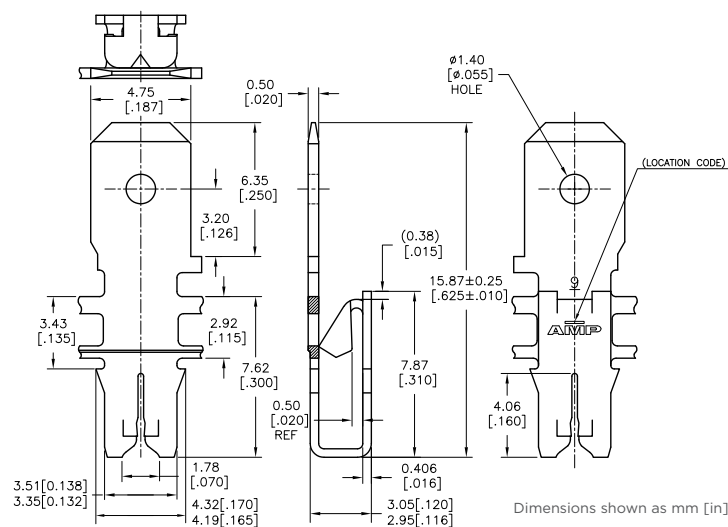
See customer drawings on [te.com](http://te.com) for more detail.

## 2825380-1



Dimensions shown as mm [in].

## 2825382-1



Dimensions shown as mm [in].

### TE TECHNICAL SUPPORT CENTER

USA:	+1 (800) 522-6752
Canada:	+1 (905) 475-6222
Mexico:	+52 (0) 55-1106-0800
Latin/S. America:	+54 (0) 11-4733-2200
Germany:	+49 (0) 6251-133-1999
UK:	+44 (0) 800-267666
France:	+33 (0) 1-3420-8686
Netherlands:	+31 (0) 73-6246-999
China:	+86 (0) 400-820-6015

## Connect With Us

We make it easy to connect with our experts and are ready to provide all the support you need.

Visit [te.com/support](https://te.com/support) to chat with a Product Information Specialist.

---

## te.com/mag-mate-terminals

TE Connectivity, TE, TE connectivity (logo), MAG-MATE, FASTON and EVERY CONNECTION COUNTS are trademarks owned or licensed by the TE Connectivity plc family of companies. All other logos, products and/or company names referred to herein might be trademarks of their respective owners.

While TE has made every reasonable effort to ensure the accuracy of the information in this document, TE does not guarantee that it is error-free, nor does TE make any other representation, warranty or guarantee that the information is accurate, correct, reliable or current. TE reserves the right to make any changes to the information contained herein without prior notice. TE Connectivity's obligations shall only be as set forth in TE Connectivity's Standard Terms and Conditions of Sale for this product and in no case will TE Connectivity be liable for any incidental, indirect, or consequential damages arising out of the sale, resale, use, or misapplication of the product. TE expressly disclaims any implied warranties with respect to the information contained herein, including, but not limited to, implied warranties of merchantability or fitness for a particular purpose. Dimensions, specifications and/or information contained herein are for reference purposes only and are subject to change without notice. Consult TE for the latest dimensions, specifications and/or information. Users of TE Connectivity products must make their own assessment as to whether the respective product is suitable for the respective desired application.

©2025 TE Connectivity. All Rights Reserved.

Published 09-25