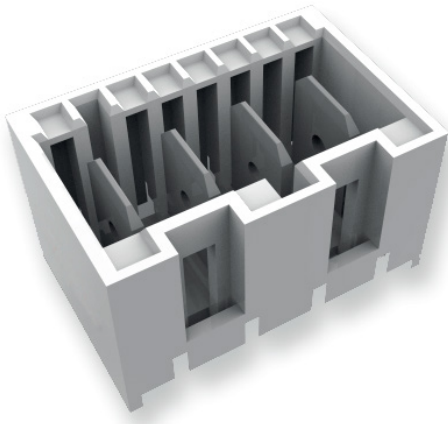


PCB CONNECTOR THAT MEETS RAST 5 STANDARD

PCB CONNECTOR THAT MEETS RAST 5 STANDARD WITH VERTICAL THROUGH HOLE TECHNOLOGY, AVAILABLE WITH TIN OR SILVER PLATING, EXTERNAL LOCKING

RAST 5 PCB connectors are designed for flexibility, reliability, and high performance. With a wide range of options, these connectors meet essential industrial and appliance safety standards, including UL94-V0 and IEC 60335-1 (GWT 750°C). They are also certified by UL, VDE, and CQC. Ideal for wire-to-board connections and control units in major appliances and other applications, these connectors feature a 5mm pitch and support 2 to 9 positions. Available in three different footprint layouts, they offer an optimized, versatile solution for a variety of design requirements.



ELECTRICAL

- Rated Current: 10A for Tin plated version; 16A for Silver plated version
- Rated Voltage: 250V AC
- Insulation Resistance: 5000M Ω
- Dielectric Strength: 3000V/m
- Current Rating (A): 20
- Voltage Rating (VAC): 250, 400, 600

MECHANICAL

- Positions: 3-17
- Configurations: Wire-To-Board

MATERIAL

- Housing: Meets Thermoplastic UL 94 V0 and IEC 60335-1
- Contact: Copper Alloy, Tin or Silver plating over Nickel
- Operating Temperature (°C): -40 to +120

STANDARDS & SPECIFICATIONS

- According to RAST 5 Specification
- Product Specification: 108-106080
- UL94 Rating: V-0 & v-2

KEY FEATURES

- Designed to the RAST 5 Standard
- Tin / Silver plating
- 2-8 positions
- Available in multiple colors
- 3 footprint layouts
- Thousands of configurations of keying & latching & polarization
- UL/VDE/CQC approval
- Meets UL 94 V0 & GWT 750°C w/o flame

APPLICATIONS



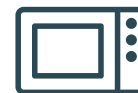
Refrigerator



Front-loading washing machine



Dishwasher



Microwave oven

PCB CONNECTOR THAT MEETS RAST 5 STANDARD

PRODUCT OFFERING

Part Number Ordering: Example for X-1971845-Y

-3

Substitute dash number listed for “Y”, therefore a -3 signifies PN 1971845-3.

1- -3

Substitute first number for “X” and second number listed for “Y”, therefore a 1- -3 signifies PN 1-1971845-3.

* Follow same numbering scheme throughout for other part numbers listed.

EXTERNAL LOCKING - FULLY LOADED

TIN PLATED							
No. of Pos.	2	3	4	5	6	7	8
X-1971845-Y	-2	-3	-4	-5	-6	-7	-8
	1- -2	1- -3	1- -4	1- -5	1- -6	1- -7	1- -8
	2- -2	2- -3	2- -4	2- -5	2- -6	2- -7	2- -8
	3- -2	3- -3	3- -4	3- -5	3- -6	3- -7	3- -8
	4- -2	4- -3	4- -4	4- -5	4- -6	4- -7	4- -8
	5- -2	5- -3	5- -4	5- -5	5- -6	5- -7	5- -8
	6- -2	6- -3	6- -4	6- -5	6- -6	6- -7	
	7- -2	7- -3	7- -4	7- -5	7- -6	7- -7	
	8- -2	8- -3	8- -4	8- -5	8- -6		
	9- -2	9- -3	9- -4	9- -5	9- -6		
X-1971895-Y	-2	-3	-4				
	1- -2		1- -4				
	2- -2		2- -4				
	3- -2		3- -4				
			4- -4				

PCB CONNECTOR THAT MEETS RAST 5 STANDARD

EXTERNAL LOCKING - FULLY LOADED

SILVER PLATED							
No. of Pos.	2	3	4	5	6	7	8
X-1971846-Y	-2	-3	-4	-5	-6	-7	-8
	1- -2	1- -3	1- -4	1- -5	1- -6	1- -7	1- -8
	2- -2	2- -3	2- -4	2- -5	2- -6	2- -7	2- -8
	3- -2	3- -3	3- -4	3- -5	3- -6	3- -7	3- -8
	4- -2	4- -3	4- -4	4- -5	4- -6	4- -7	4- -8
	5- -2	5- -3	5- -4	5- -5	5- -6	5- -7	5- -8
	6- -2	6- -3	6- -4	6- -5	6- -6	6- -7	
	7- -2	7- -3	7- -4	7- -5	7- -6	7- -7	
	8- -2	8- -3	8- -4	8- -5	8- -6		
	9- -2	9- -3	9- -4	9- -5	9- -6		
X-1971896-Y	-2	-3	-4				
	1- -2		1- -4				
	2- -2		2- -4				
	3- -2		3- -4				
			4- -4				

LEARN MORE ►

PCB CONNECTOR THAT MEETS RAST 5 STANDARD

	Series	RAST 5 Tab Header					
		DIN Style					
	Sub-type	Vertical Standard Fully		Vertical Standard Fully/ Selectively	Vertical Opposite Fully	Vertical Standard Selectively	Vertical Opposite Selectively
	Base No	521383	1971845 / 1971846 / 1971896	2390874 / 2390877 / 2392784	2232043 / 2232044 / 2232045 / 2232046	2232511	2322950
Drawing No	CD	521383	1971845	2390874	2232043	2232511	2322950
	PD	521383	1971845	2390874	2232043	2232511	2322950
Counterparts	Mating Part	AMP multifitting mark II, AMP MONO-SHAPE, AMP Standard Timer					
Housing	Material Type	PA	PA	PA	PA	PA	PA
	UL-V0	X	X	X	X	X	X
	UL-V2	-	-	-	-	-	-
	GWEPT 750°C	-	X	X	X	X	X
Contact	Bulk Material	CuZn	CuZn	CuZn	CuZn	CuZn	CuZn
	Plating	Tin	Tin / Ag	Tin	Tin / Ag	Tin / Ag	Tin
Application	Qty of Pole	2-9	2-8	2-5, 7	2-8	3-8	4-7
	Wire Range	NA					
	Current rating (A)	20A					
	Voltage Rating (V)	250V AC	400V AC (fully loaded) / 600V AC (selectively loaded)				
Document	Product Spec	108-2183	108-106080				
	Application spec						
Document	VDE	40017532	40037338				
	UL	E28476_20040922	E28476_20121227				

PCB CONNECTOR THAT MEETS RAST 5 STANDARD

	Series	RAST 5 Tab Header				
		DIN Style				
	Sub-type	Vertical Shrouded Standard/ Opposite Fully	Vertical Shrouded Standard/ opposite Selectively	R/A Standard Selectively	R/A Standard - Reverse Fully	R/A Standard Fully/Selectively
	Base No	521385	1969738	521386	1955660	1969352
Drawing No	CD	1969740	1969738	521386	1955660	1969352
	PD	1969740	1969738	521386	1955660	1969352
Counterparts	Mating Part					
Housing	Material Type	PA	PA	PA	PA	PA
	UL-V0	X	X	X	-	-
	UL-V2	-	-	-	X	X
	GWEPT 750°C	X	X	-	X	X
Contact	Bulk Material	CuZn	CuZn	CuZn	CuZn	CuZn
	Plating	Tin / Ag	Tin / Ag	Tin	Tin	Tin
Application	Qty of Pole	2~7	3~4	3~5	2~7	2~8
	Wire Range	NA				
	Current rating (A)	20A				
	Voltage Rating (V)	400V AC (fully loaded) / 600V AC (selectively loaded)			250V AC	
Document	Product Spec	108-106080		108-2183		
	Application spec					
Document	VDE	40037338		-	40017532	-
	UL	E28476_20121227		E28476_20040922		

PCB CONNECTOR THAT MEETS RAST 5 STANDARD

	Series	RAST 5 Tab Header					
		Positive Lock Style					
	Sub-type	Vertical Standard Selectively	Vertical Standard/ Opposite Fully	Vertical Opposite Fully	Vertical Opposite Selectively	Vertical Shrouded Standard w inner wall Fully	Vertical Shrouded Opposite w inner wall Fully
	Base No	2232611	2232647	2372858	2385644	2371464	2371673
Drawing No	CD	2232611	2232647	2372858	2385644	2371466	2371673
	PD	2232611	2232647	2372858	2385644	2371466	2371673
Counter-parts	Mating Part	Positive Lock RAST 5 Connector System					
Housing	Material Type	PA	PA	PA	PA	PA	PA
	UL-V0	X	X	X	X	X	X
	UL-V2	-	-	-	-	-	-
	GWEPT 750°C	X	X	X	X	X	X
Contact	Bulk Material	CuZn	CuZn	CuZn	CuZn	CuZn	CuZn
	Plating	Tin / Ag	Tin / Ag	Tin	Tin	Tin	Tin
Application	Qty of Pole	3-8	2-8	2-5	5	2-4	2-5
	Wire Range	NA					
	Current rating (A)	20A					
	Voltage Rating (V)	400V AC (fully loaded) / 600V AC (selectively loaded)					
Document	Product Spec	108-106080					
	Application spec						
Document	VDE	40037338					
	UL	E28476_20121227					

PCB CONNECTOR THAT MEETS RAST 5 STANDARD

	RAST 5 Tab Header						
	Series	Positive Lock Style					
	Sub-type	Vertical Shrouded Standard w Feet Fully	Vertical Shrouded Opposite w Feet Fully	Vertical Shrouded Standard Fully	Vertical Shrouded Opposite Fully	R/A Standard Fully	R/A Standard - GWT Fully
	Base No	2405963	2405966	2292457 / 2390868	2337101 / 2390869	521384	1969234
Drawing No	CD	2405963	2405966	2292457	2337101	521384	1969234
	PD	2405963	2405966	2292457	2337101	521384	1969234
Counter-parts	Mating Part						
Housing	Material Type	PA	PA	PA	PA	PA	PA
	UL-V0	X	X	X	X	X	-
	UL-V2	-	-	-	-	-	X
	GWEPT 750°C	X	X	X	X	-	X
Contact	Bulk Material	CuZn	CuZn	CuZn	CuZn	CuZn	CuZn
	Plating	Tin	Tin	Tin	Tin	Tin	Tin
Application	Qty of Pole	2-4	2	2 ~ 5	2	2-9	2
	Wire Range	NA					
	Current rating (A)	20A					
	Voltage Rating (V)	400V AC (fully loaded) / 600V AC (selectively loaded)					
Document	Product Spec	108-106080				108-2183	
	Application spec						
Document	VDE	40037338				40017532	
	UL	E28476_20121227				E28476_20040922	

te.com

TE Connectivity, TE connectivity (logo) and TE are trademarks owned or licensed by the TE Connectivity plc family of companies. All other logos, products and/or company names referred to herein might be trademarks of their respective owners. While TE has made every reasonable effort to ensure the accuracy of the information in this brochure, TE does not guarantee that it is error-free, nor does TE make any other representation, warranty or guarantee that the information is accurate, correct, reliable or current. TE reserves the right to make any adjustments to the information contained herein at any time without notice. TE expressly disclaims all implied warranties regarding the information contained herein, including, but not limited to, any implied warranties of merchantability or fitness for a particular purpose. TE Connectivity's obligations shall only be as set forth in TE Connectivity's Standard Terms and Conditions of Sale for this product and in no case will TE Connectivity be liable for any incidental, indirect or consequential damages arising out of the sale, resale, use or misuse of the product. Consult TE for the latest dimensions and design specifications.

© 2025 TE Connectivity. All Rights Reserved.

01/25