

MULTI-USE CONNECTOR CONTACTS

What is it:

Connector contacts which can be used across both circular and rectangular product options and utilize the same assembly tooling which helps reduce applied cost.

Where to find it:

CABLE HARNESS
SHOPS

CONTRACT
MANUFACTURERS

OEM'S

Critical for:

- ✓ Design flexibility
- ✓ Reduced inventory
- ✓ Off the shelf availability

Key challenges:

- ✓ Common assembly tooling
- ✓ Industry standards UL, CSA, ROHS, VDE
- ✓ High performance materials

FOR MORE INFORMATION

ASK OUR EXPERT ►

te.com/circular-plastic-connectors

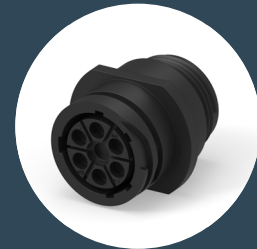
TE, TE Connectivity, TE connectivity (logo), and EVERY CONNECTION COUNTS are trademarks owned or licensed by the TE Connectivity plc family of companies. Other product names, logos, and company names mentioned herein may be trademarks of their respective owners.

The information given herein, including drawings, illustrations and schematics which are intended for illustration purposes only, is believed to be reliable. However, TE Connectivity makes no warranties as to its accuracy or completeness and disclaims any liability in connection with its use. TE reserves the right to make any adjustments to the information contained herein at any time without notice. TE Connectivity's obligations shall only be as set forth in TE Connectivity's Standard Terms and Conditions of Sale for this product and in no case will TE Connectivity be liable for any incidental, indirect or consequential damages arising out of the sale, resale, use or misuse of the product. TE expressly disclaims all implied warranties regarding the information contained herein, including, but not limited to, any implied warranties of merchantability or fitness for a particular purpose. Users of TE Connectivity products should make their own evaluation to determine the suitability of each such product for the specific application.

© 2025 TE Connectivity. All Rights Reserved.

05/25

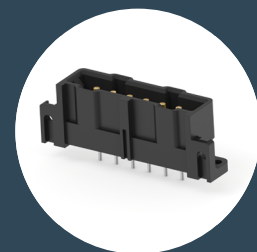
Related TE Connectivity components:



[Circular Plastic Connectors](#)



[Contacts](#)



[Rectangular Plastic Connectors \(RPC\)](#)