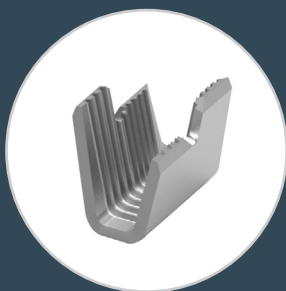


POWERING MOTORS, CONNECTING SOLUTIONS

SOLDERLESS MAGNET WIRE SOLUTIONS FOR ELECTRIC MOTORS

For engineers seeking to streamline electric motor manufacturing, TE Connectivity (TE) provides a lineup of solderless magnet wire solutions and cost-effective tooling options tailored for copper and / or aluminum magnet wire. Rev up your motor manufacturing by requesting [FREE magnet wire samples](#).



**AMPLIVAR
TERMINALS**



**CLUSTER BLOCK
TERMINALS**



**MAG-MATE
TERMINALS**



**SIAMEZE
TERMINALS**

DISCOVER MAGNET WIRE COMPONENT SOLUTIONS - TRY BEFORE YOU BUY!

Experience the cutting-edge possibilities of magnet wire component solutions firsthand with our free samples – explore, innovate, and elevate your projects today.

AMPLIVAR Terminals & Splices

AMPLIVAR terminals and splices are magnet wire connectors featuring crimp barrels with sharp edged serrations that pierce magnet wire insulation without wire stripping. This unique crimp results in a solderless and airtight connection without the contaminants, cold solder points, weld burns and wire embrittlement associated with thermal termination. Terminals are available in a variety of styles, including ring tongue and FASTON straight, flag or stator receptacles.



Crimp



Straight Orientation



Flag Orientation



Magnet Wire

SPLICE



3 Splice Capacity, Pigtail splice, 3000-7000 CMA Wire Size [62308-2](#)

RECEPTACLE



20-17 AWG, .25 in, Flag FASTON Receptacle [1742881-1](#)

RING TERMINAL



20-16 AWG, Closed Ring Tongue Terminal, Open Barrel, Straight, Tin, Uninsulated [60322-2](#)

Hermetic Cluster Block

Cluster blocks provide manufacturers of air conditioning and refrigeration products with a low-cost, fully insulated, electrical quick-connect to mate with hermetic compressor header pins. They feature high impact resistance to shock and abuse, and long-life performance in the presence of oils and refrigerants. Since the connectors accept pins from only one side, the danger of reversing polarity at the time of installation is minimized.



Low Insertion Force



Flame Resistance

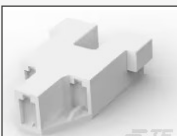


Magnet Wire




Multi-Position Housing

HOUSING



20-16 AWG, 3 Circuits, 2.3mm Cluster Block Housing [171370-3](#)



22-10 AWG, 3 Circuits, 2.29mm Cluster Block Housing [880631-5](#)

RECEPTACLE



Receptacle Cluster Pin 0.19 dia [1599105-1](#)

MAG-MATE Terminals

MAG-MATE terminals use insulation displacement contact technology for high-speed termination of copper or aluminum magnet wire without wire stripping, soldering or welding. The termination system includes the IDC terminal and a compatible plastic cavity that is either integrated into the coil body or part of a separate housing. MAG-MATE terminals are designed for fully or semi-automated assembly to provide uniform, gas-tight connections at low applied cost.



Insulation Displacement Connector



Straight Orientation

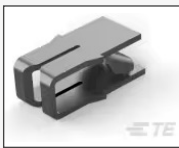


Flag Orientation



Magnet Wire

POKE-IN TERMINAL



20-18 AWG, Poke-In, Twisted, Size 2, Tin Plated, Insulation Displacement
[63658-1](#)

POKE-IN TAB



18-14 AWG, Poke-In Tab, Flag, Crimp / Insulation Displacement
[63458-1](#)

LEAF TERMINAL



22-20 AWG, Leaf Terminal, Twisted, Insulation Displacement
[928770-2](#)

POST TERMINAL



24-22 AWG Solder Post, Size 2, Insulation Displacement, Dimple Mating
[63659-1](#)

SIAMEZE Terminals

SIAMEZE insulation displacement contact terminals bring high-speed, solderless magnet wire termination to space constrained, small motor systems. The IDC terminal features a moving beam contact to fit a wide range of magnet wire sizes in a single terminal. SIAMEZE terminals can be applied with automated or manual assembly to achieve stable, gas-tight connections of either copper or aluminum magnet wire, without the need for pre-stripping.



Insulation Displacement Connector



Straight Orientation



Magnet Wire

TAB TERMINAL



34-18 AWG Tab .25 in Width, Straight, Insulation Displacement
[1601002-2](#)



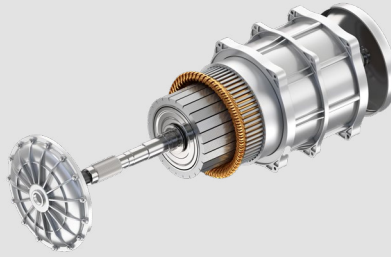
34-18 AWG, Solder Post, 1.5mm Mating Tab, Insulation Displacement
[2-1601063-2](#)

WIRE-TO-WIRE TERMINAL



20 AWG, Wire-To-Wire Terminal, Straight, Insulation Displacement
[4-1601237-1](#)

SOLDERLESS MOTOR SOLUTIONS



ELECTRIC BIKE



POWER TOOLS



HEAT COMPRESSOR

Learn more about our solderless magnet wire solutions and how they can help improve efficiency during electric motor manufacturing. These three case studies use the examples of electric bikes, power tools and heat compressors to show versatility of solderless magnet wire terminals and splices.

[LEARN MORE ▶](#)

APPLICATION TOOLING FOR MAGNET WIRE PROCESSING



MAGNET EQUIPMENT WIRE

Our magnet wire termination machines efficiently handle a variety of products, offering a wide range of configurations for MAG-MATE and AMPLIVAR splices and terminals. Automatic precision adjustment functionality ensures enhanced efficiency.

[LEARN MORE ▶](#)



AMPLIVAR PRODUCT TERMINATOR

Our AMPLIVAR 5A and AMPLIVAR 5E terminators efficiently crimp magnet wire and pigtail AMPLIVAR splices and direct connect AMPLIVAR contact terminals. No insulation stripping is needed. Just place the wires, press the foot switch, and the machine automatically crimps, shears, and advances to the next splice or contact.

[LEARN MORE ▶](#)

Connect With Us

We make it easy to connect with our experts and are ready to provide all the support you need. Visit the [HVAC contact us page](#) to chat with a Product Information Specialist.

te.com/hvac-solutions

© 2024 TE Connectivity Ltd. Family of Companies. All Rights Reserved.

TE, TE Connectivity, AMPLIVAR, FASTON, MAG-MATE, SIAMEZE and TE connectivity (logo) are trademarks owned or licensed by the TE Connectivity Ltd. family of companies. All other logos, products and/or company names referred to herein might be trademarks of their respective owners.

While TE Connectivity has made every reasonable effort to ensure the accuracy of the information in this document, TE Connectivity does not guarantee that it is error-free, nor does TE Connectivity make any other representation, warranty, or guarantee that the information is accurate, correct, reliable or current. TE Connectivity reserves the right to make any adjustments to the information contained herein at any time without notice. TE Connectivity expressly disclaims any liability and all implied warranties regarding the information contained herein, including, but not limited to, any implied warranties of merchantability or fitness for a particular purpose. TE Connectivity's obligations shall only be as set forth in TE Connectivity's Standard Terms and Conditions of Sale for this product and in no case will TE Connectivity be liable for any incidental, indirect or consequential damages arising out of the sale, resale, use or misuse of the product. Users of TE Connectivity products should make their own evaluation to determine the suitability of each such product for the specific application.

05/24