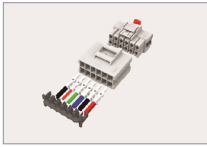


APPLIANCES PRODUCT LINE CARD



POWER INTERCONNECTS

[POWER INTERCONNECT DESIGN NAVIGATOR](#)



POWER TRIPLE LOCK
Connectors



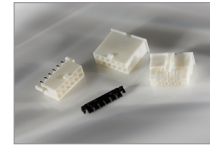
Power Key
Connectors



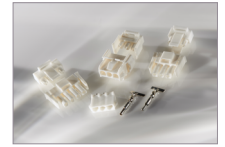
Economy Power
Connectors



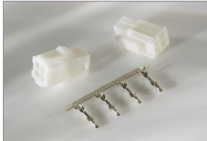
Micro MATE-N-LOK
Connectors



VAL-U-LOK
Connectors



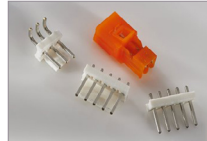
Universal MATE-N-LOK
Connectors



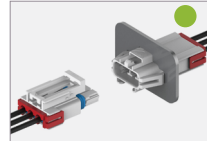
Mini Universal
MATE-N-LOK
Connectors



Power Double
Lock Connectors



MTA and SL 156
Connectors



Power Versa-Lock
Connectors



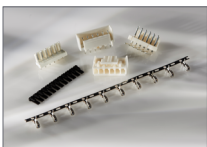
GRACE INERTIA
Connectors



Commercial MATE-N-LOK
Connectors

SIGNAL INTERCONNECTS

[SIGNAL INTERCONNECT DESIGN NAVIGATOR](#)



Economy Power
2.5 Connectors



Signal GRACE
INERTIA Connectors



Signal Double
Lock Connectors



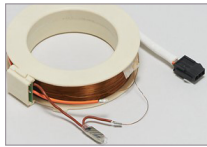
MTA 100
Connectors



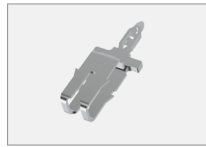
AMP-IN
Connectors

MAGNET WIRE CONNECTIONS

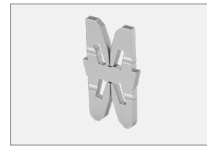
[MAGNET WIRE TERMINALS SELECTION TOOL](#)



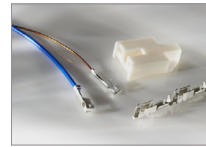
AMPLIVAR Terminals
& Splices



MAG-MATE
Terminals



SIAMEZE
Terminals



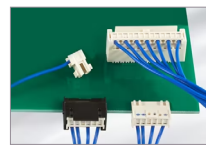
Hermetic Cluster
Blocks

RAST CONNECTORS

[RAST CONNECTORS DESIGN NAVIGATOR](#)



RAST Connector
System



Monoplug 2.5
Connectors



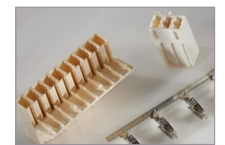
RAST Headers



AMP MONO-SHAPE
Connectors



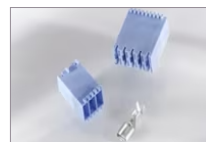
AMP Multifitting
Mark II Connectors



RAST 5 Standard
Timer Connectors



FASTIN-FASTON RAST
5 Connectors



Positive Lock RAST 5
Connectors



AMP DUOPLUG 2.5
Connector



AMP DUOPLUG
Power Connector

● New Product

RAST TOOLING



EL-SIM Compact
Semi-Automatic IDC
Termination Machine



HP-SIM
High-Performance
Semi-Automatic IDC
Termination Machine



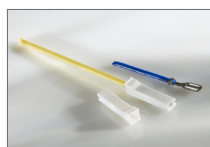
MHM Fully-Automatic
IDC & Crimp Harness
Maker



IHM Mark III
Fully-Automatic IDC
Harness Maker

TERMINALS AND SPLICES

[QUICK CONNECT TERMINALS DESIGN NAVIGATOR](#)



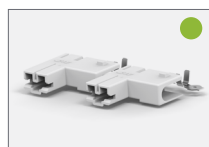
Positive Lock
Terminals



FASTON Terminals



Mini FASTON
Terminals



POD-LOK Terminals



Ultra-Fast
Terminals



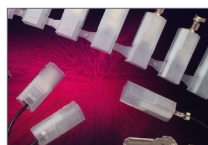
STANDARD FASTON
TERMINALS



F-Spring Terminals



Infinite Switch
Housings



Ultra-Pod FASTON
Pre-insulated
Terminals



4.8 Series FASTON
Receptacles for Multi
Thickness Tabs



Terminal Housings,
Insulation Sleeves &
Blocks



PCB
Terminals



For information on our heat shrink tubing and other performance material offerings please refer to the Performance Materials Line Card.

[EXPLORE MORE ▶](#)



SCAN TO VIEW
APPLIANCES DIGITAL
PRODUCT LINE CARD

te.com

Power Versa-Lock, SIAMEZE, AMP, FASTIN-FASTON, AMP DUOPLUG, AMP DUOPLUG 2.5, AMP MONO-SHAPE, POWER TRIPLE LOCK, MATE-N-LOK, MTA, VAL-U-LOK, MAG-MATE, AMPLIVAR, GRACE INERTIA, Positive Lock, POD-LOK, FASTON, TE Connectivity and TE Connectivity (logo) are trademarks owned or licensed by the TE Connectivity Ltd. family of companies.. All other logos, products and/or company names referred to herein might be trademarks of their respective owners.

The information given herein, including drawings, illustrations and schematics which are intended for illustration purposes only, is believed to be reliable. However, TE Connectivity makes no warranties as to its accuracy or completeness and disclaims any liability in connection with its use. TE Connectivity's obligations shall only be as set forth in TE Connectivity's Standard Terms and Conditions of Sale for this product and in no case will TE Connectivity be liable for any incidental, indirect or consequential damages arising out of the sale, resale, use or misuse of the product. Users of TE Connectivity products should make their own evaluation to determine the suitability of each such product for the specific application.

© 2024 TE Connectivity Ltd. family of companies. All Rights Reserved.

01/24 Revised