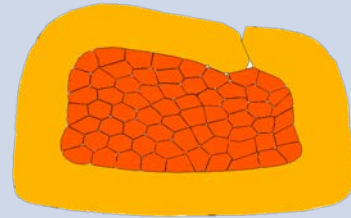
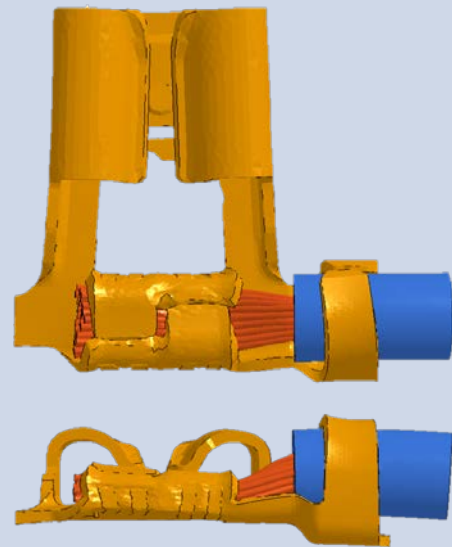
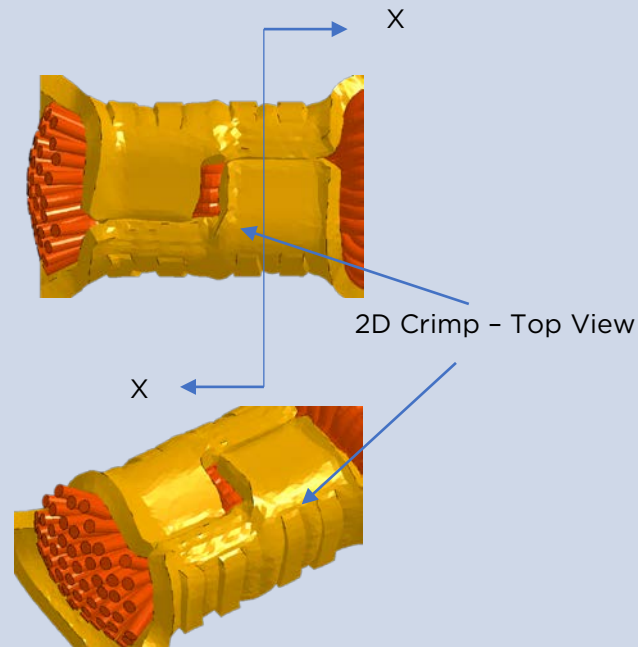


2D Crimp Quality Guidelines Flag Terminal

GOOD 2D CRIMP



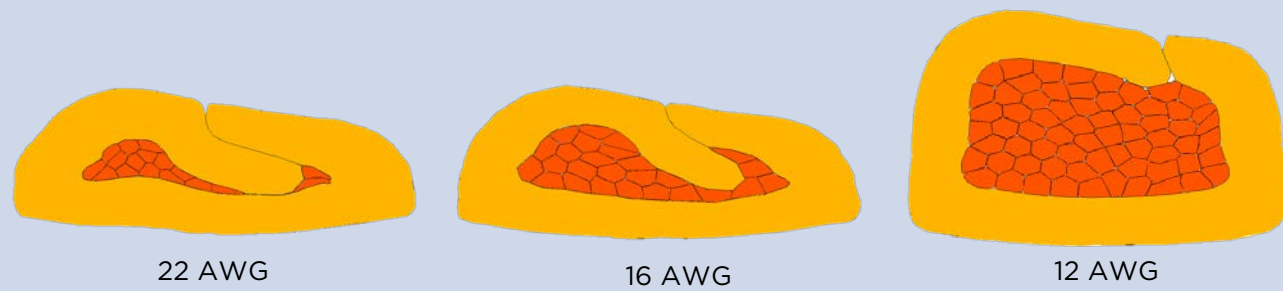
SECTION X-X
12 AWG



MEASURING 2D CRIMP



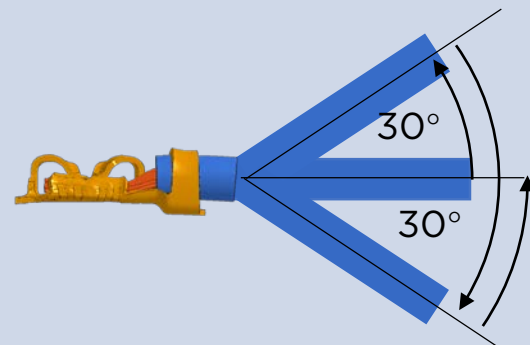
SPECIAL FIXTURE FOR 2D CRIMP MEASUREMENT



GOOD WIRE BARREL CRIMP CROSS SECTION

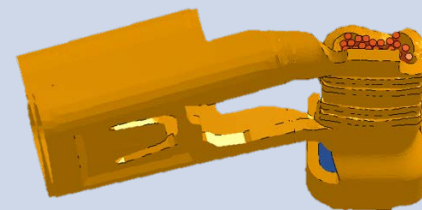


GOOD INSULATION BARREL CROSS SECTION

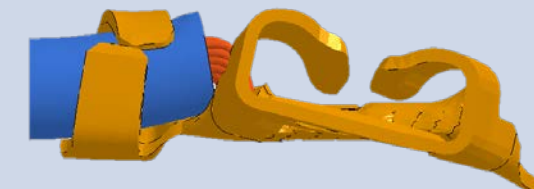


INSULATION CRIMP BEND TEST

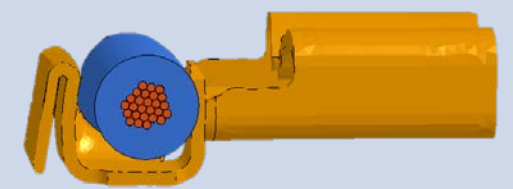
BAD 2D CRIMP



BENT TERMINAL



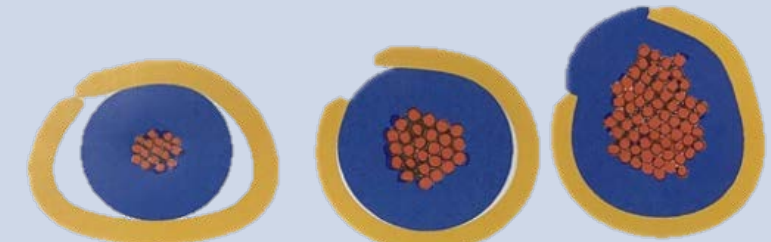
TWISTED TERMINAL



INSULATION BARREL DISTORTED



BAD WIRE BARREL CRIMP CROSS SECTION



BAD INSULATION BARREL CROSS SECTION

TE, TE Connectivity and TE Connectivity (logo) are trademarks. All other logos, products and/or company names referred to herein might be trademarks of their respective owners.

The information given herein, including drawings, illustrations and schematics which are intended for illustration purposes only, is believed to be reliable. However, TE Connectivity makes no warranties as to its accuracy or completeness and disclaims any liability in connection with its use. TE Connectivity's obligations shall only be as set forth in TE Connectivity's Standard Terms and Conditions of Sale for this product and in no case will TE Connectivity be liable for any incidental, indirect or consequential damages arising out of the sale, resale, use or misuse of the product. Users of TE Connectivity products should make their own evaluation to determine the suitability of each such product for the specific application.