



LUMAWISE ENDURANCE N SHORTING CAPS

TE Connectivity's (TE) LUMAWISE Endurance N Shorting Caps provide a safer, convenient and economical method to close or open the primary circuit path across a NEMA compliant receptacle on an outdoor light. The LUMAWISE Endurance N shorting caps are ANSI compliant and UL listed. They offer an IP66 rating for outdoor harsh environments. LUMAWISE Endurance N shorting caps are used to disconnect service (Open Cap) or to provide continual power from the pole to the luminaire (Shorting Cap). A shorting cap with an integrated Metal Oxide Varistor (MOV) provides surge protection for LED luminaires that are required to be on continuously.

APPLICATIONS

- Roadway
- [Street and area lighting fixtures](#)
- [Commercial lighting](#) (parking lots, car dealerships, etc)

MECHANICAL

- Operating temperature rating: -40°C to 120°C

MATERIALS

- UV stabilized material

SPECIFICATIONS

- Product specification: [108-133113](#)
- ANSI C136.10
- UL773
- IEC 61984:200 8
- IEC 60529
- IEC 62262

BENEFITS

- Provides IP66 water ingress protection helping reduce outdoor light fixture maintenance and extending operating life
- Shorting cap with MOV protects the luminaire from transient line voltages
- An alternative to light sensing control units
- Distinct cap shape helps improve visual distinction between standard photo controls and shorting caps
- IK08 high impact resistant

ELECTRICAL

- Current rating: 15 A max
- Voltage rating: 0VAC - 480VAC (parking lots, car dealerships, etc)

CERTIFICATES

- C-UL listed: E66375
- UL-EN certified: US-32907-UL

LUMAWISE ENDURANCE N SHORTING CAPS

PRODUCT INFORMATION

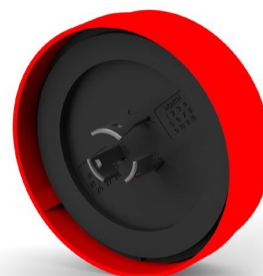
Description	Part Number
LUMAWISE Endurance N Shorting Cap Assembly	2328118-1
LUMAWISE Endurance N Shorting Cap Assembly w/Surge Protection	2328118-2
LUMAWISE Endurance N Shorting Cap Assembly, Open Cap	2328118-3



[2328118-1](#)



[2328118-2](#)



[2328118-3](#)

Contact Our Product Team

We make it easy to connect with our experts and are ready to provide the support you need.

Visit te.com/support to chat with a Product Information Specialist.

te.com/lumawise-endurance-n-shorting-caps

LUMAWISE, TE, TE Connectivity, TE, TE connectivity (logo) and EVERY CONNECTION COUNTS are trademarks owned or licensed by the TE Connectivity plc family of companies. All other logos, products and/or company names referred to herein might be trademarks of their respective owners.

While TE has made every reasonable effort to ensure the accuracy of the information in this document, TE does not guarantee that it is error-free, nor does TE make any other representation, warranty or guarantee that the information is accurate, correct, reliable or current. TE reserves the right to make any changes to the information contained herein without prior notice. TE Connectivity's obligations shall only be as set forth in TE Connectivity's Standard Terms and Conditions of Sale for this product and in no case will TE Connectivity be liable for any incidental, indirect, or consequential damages arising out of the sale, resale, use, or misapplication of the product. TE expressly disclaims any implied warranties with respect to the information contained herein, including, but not limited to, implied warranties of merchantability or fitness for a particular purpose. Dimensions, specifications and/or information contained herein are for reference purposes only and are subject to change without notice. Consult TE for the latest dimensions, specifications and/or information. Users of TE Connectivity products must make their own assessment as to whether the respective product is suitable for the respective desired application.

© 2025 TE Connectivity. All Rights Reserved.

06-25