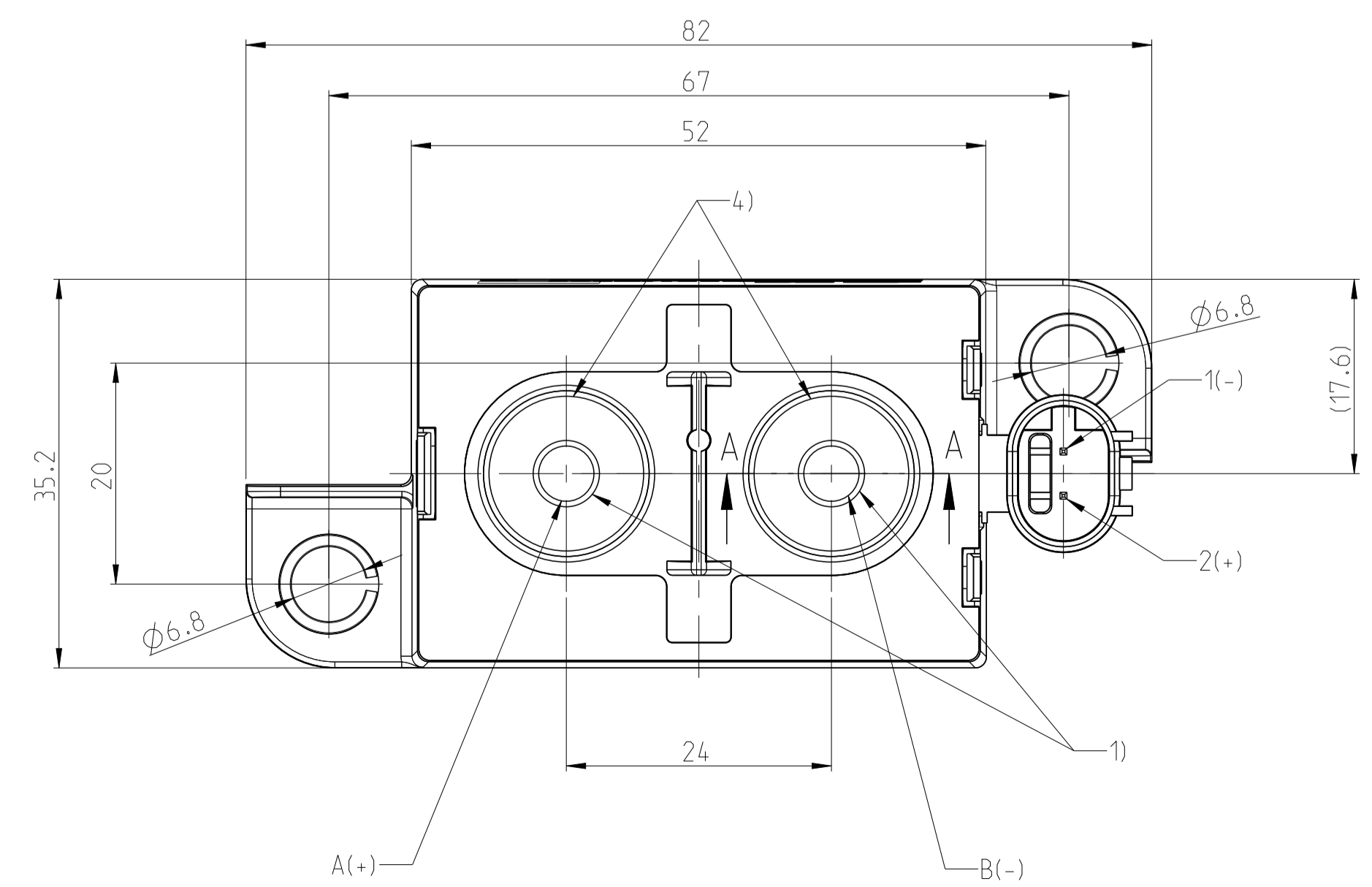
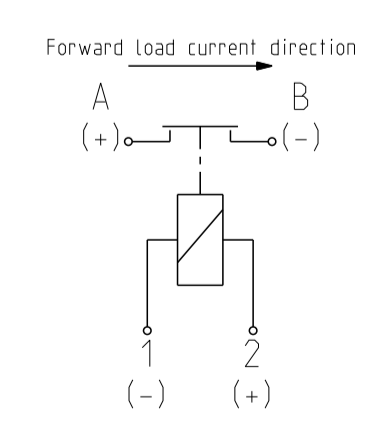
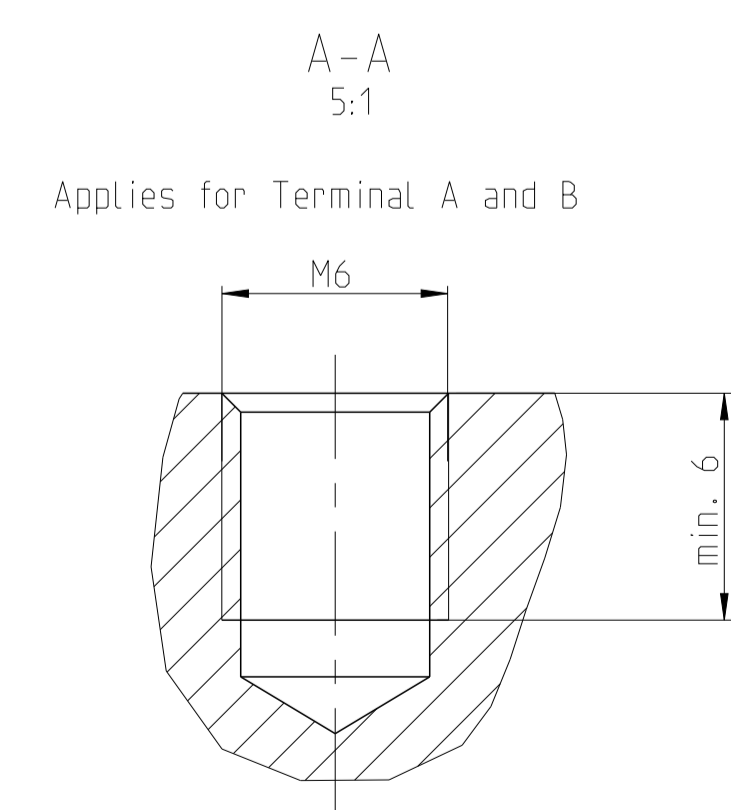
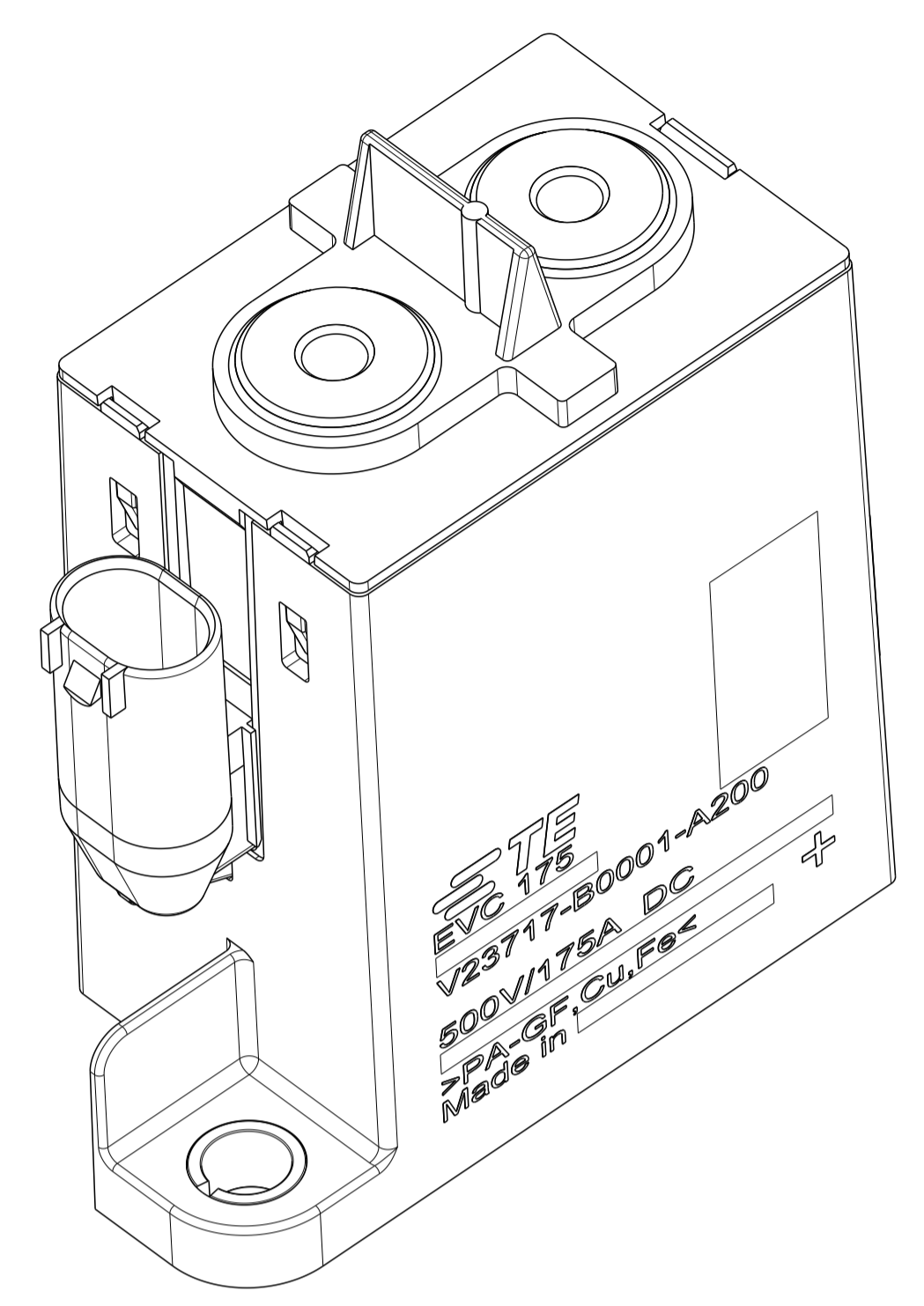
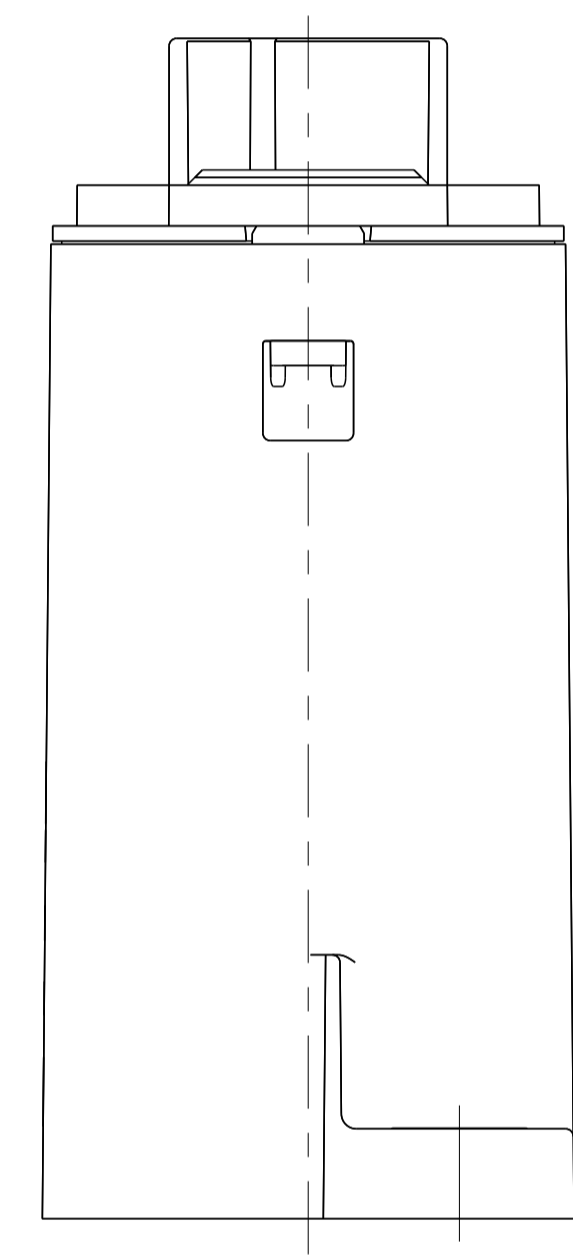
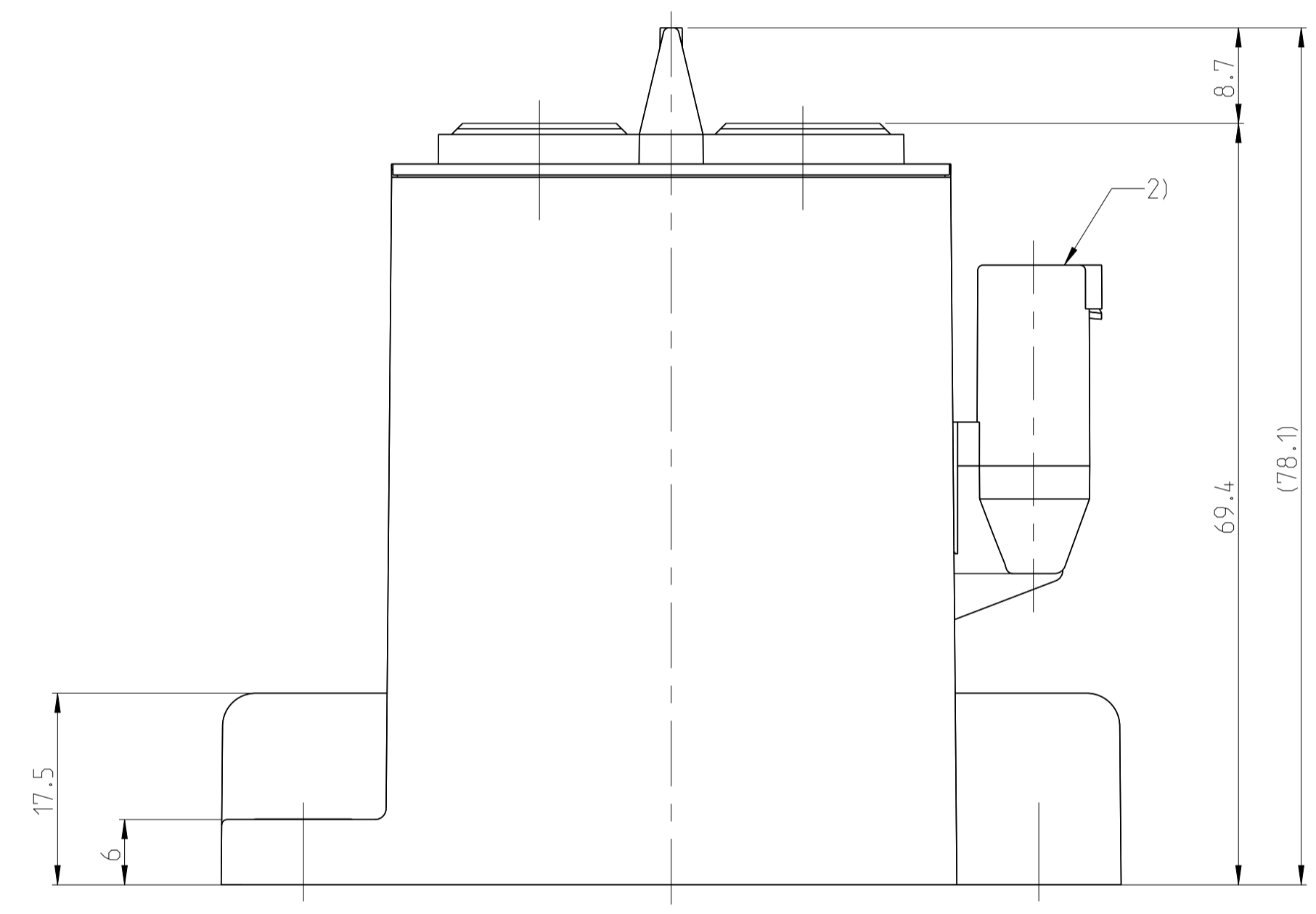
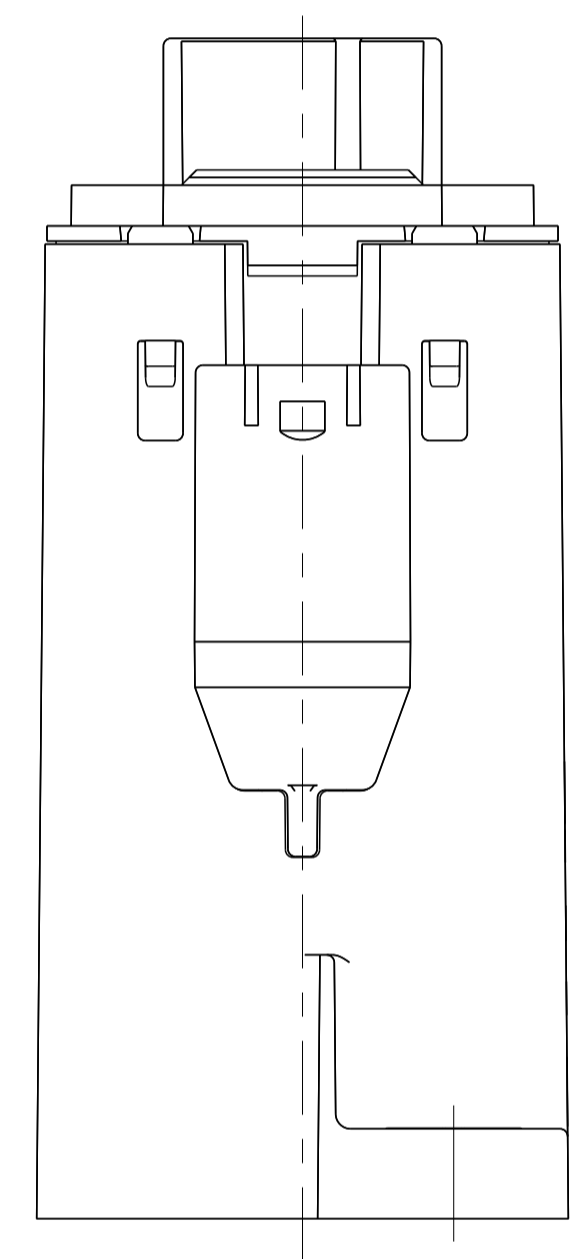
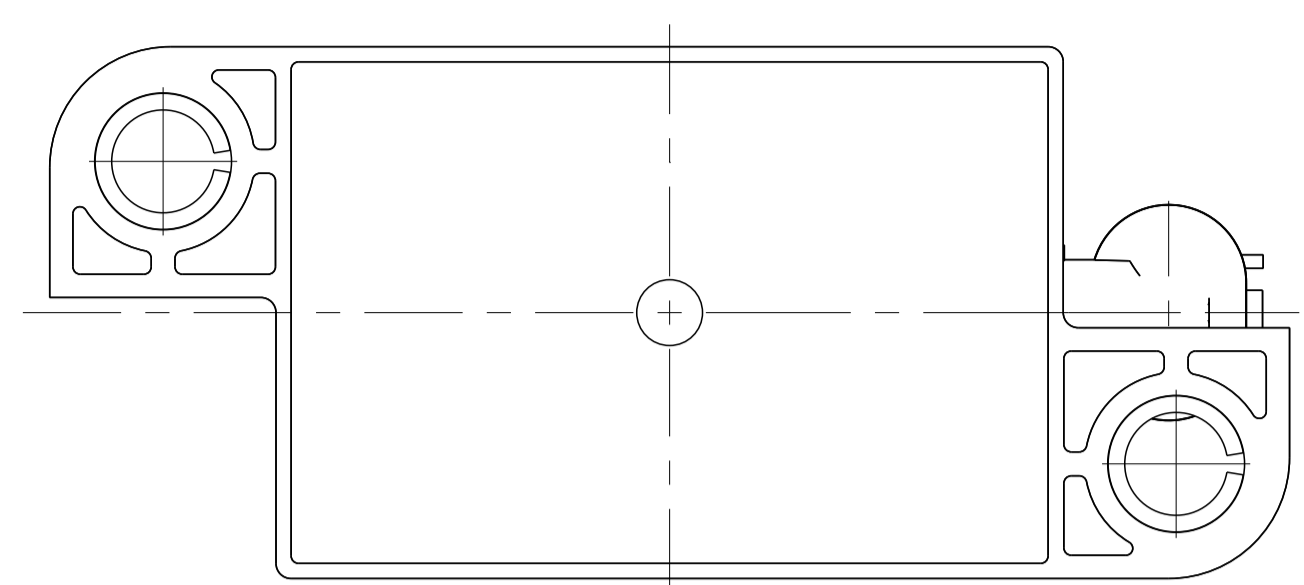
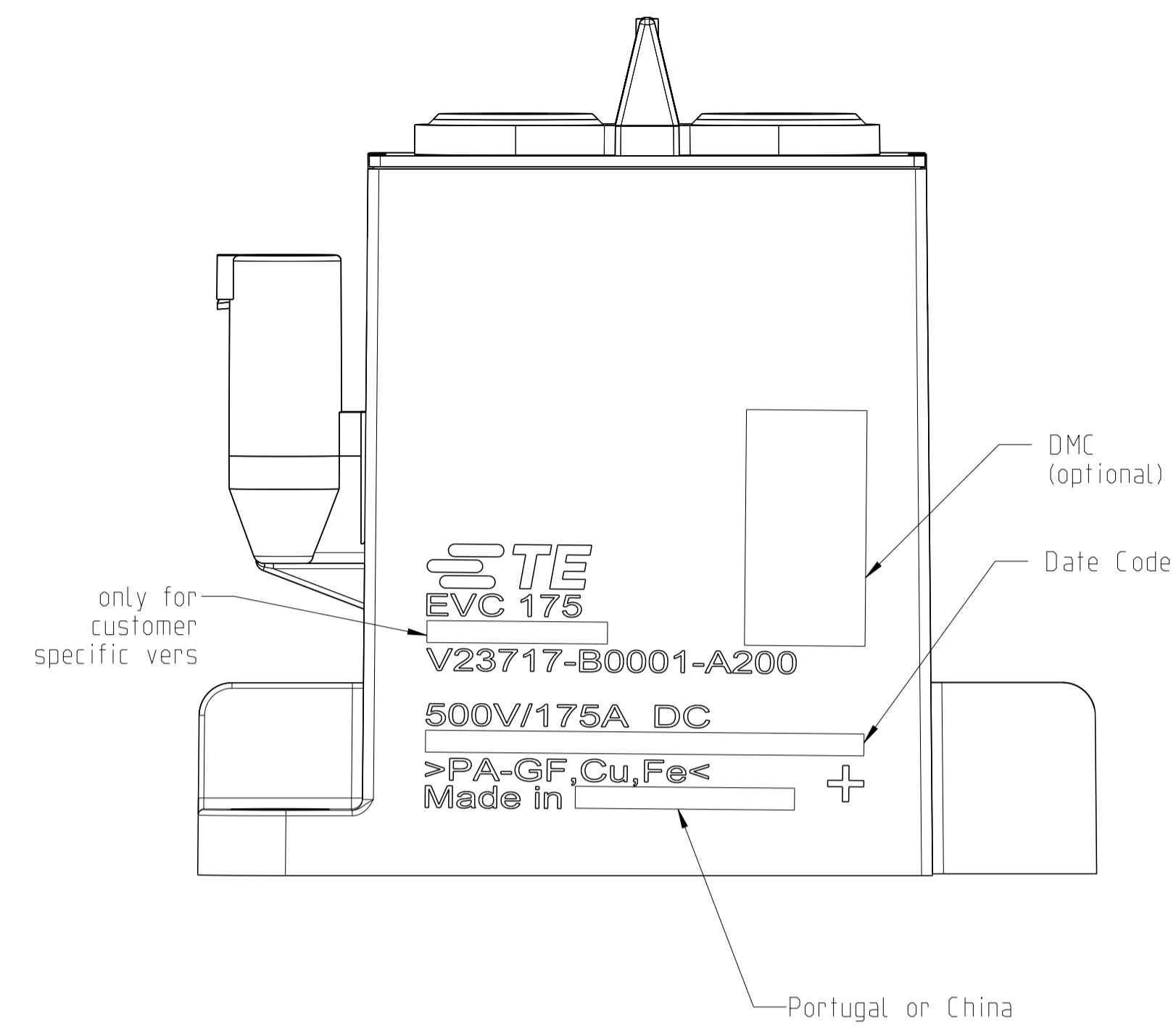


EVC175, Marking, Bottom Mount Relay for Portugal and China Production

REVISIONS					
P	LTR	DESCRIPTION	DATE	DMN	APVD
1		Internal	17MAY2017	LAME	THAE
A		Table TCPN, Marking (China / Portugal)	30Jul2019	JGAb	THAE
B		ECO-20-007661	02JUN2020	JGAB	THAE



Notice:

- 1) Permitted Torque max. 5 Nm
- 2) Socket Housing  
TE Interface 2 Pos. MQS Code A, appropriate for Socket Housing 2 Pos. MQS, TE Part No. 1-967644-1
- 3) Tolerances ISO8015 / ISO 2768-cl
- 4) Plating Sn

China Production	23123311-4	B	V23717-B0001-A200
Evora Production	5-1904144-3	B	V23717-B0001-A200
Remark	TCPN	REV	PART ALIAS

THIS DRAWING IS A CONTROLLED DOCUMENT.		DMN	17MAY2017	TE Connectivity	
DIMENSIONS: mm		CHK	L. Almeida	NAME	
TOLERANCES UNLESS OTHERWISE SPECIFIED:		APVD	T. Haehnel	EVC 175 Bottom Mount Single Coil	
0 PLC # 3)		APPLICATION SPEC			
1 PLC #		SIZE CAGE CODE DRAWING NO			
2 PLC #		RESTRICTED TO			
3 PLC #		WEIGHT 295g			
4 PLC #		A 1 --- C=V23717-B0001-A200			
ANGLES #		CUSTOMER DRAWING			
FINISH #1		SCALE 2:1 SHEET 1 OF 1 REV B			