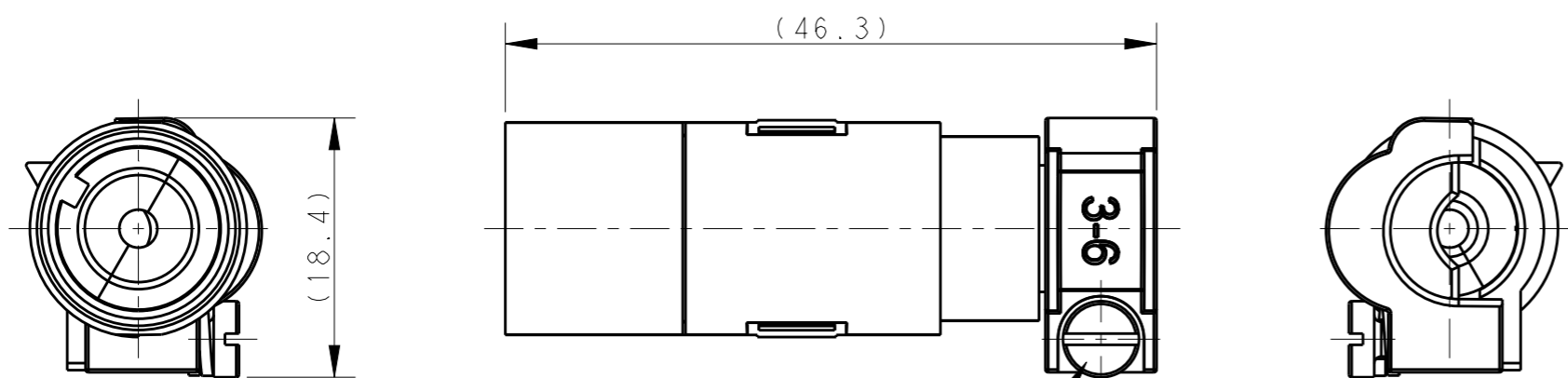


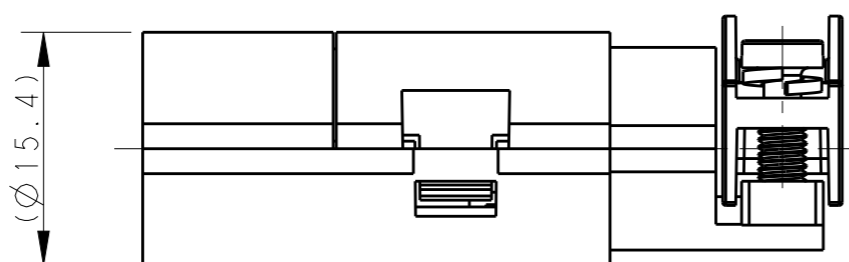
REVISIONS

P	LTR	DESCRIPTION	DATE	DWN	APVD
	A	INITIAL	22DEC2017	YC	CW

ASSEMBLY STATE OF THE PRODUCT, FOR REFERENCE
产品装配状态, 供参考



M3 SCREW, RECOMMENDED
TIGHTENING TORQUE 0.5 N.m
M3螺丝, 推荐锁紧力矩0.5 N.m



NOTES:

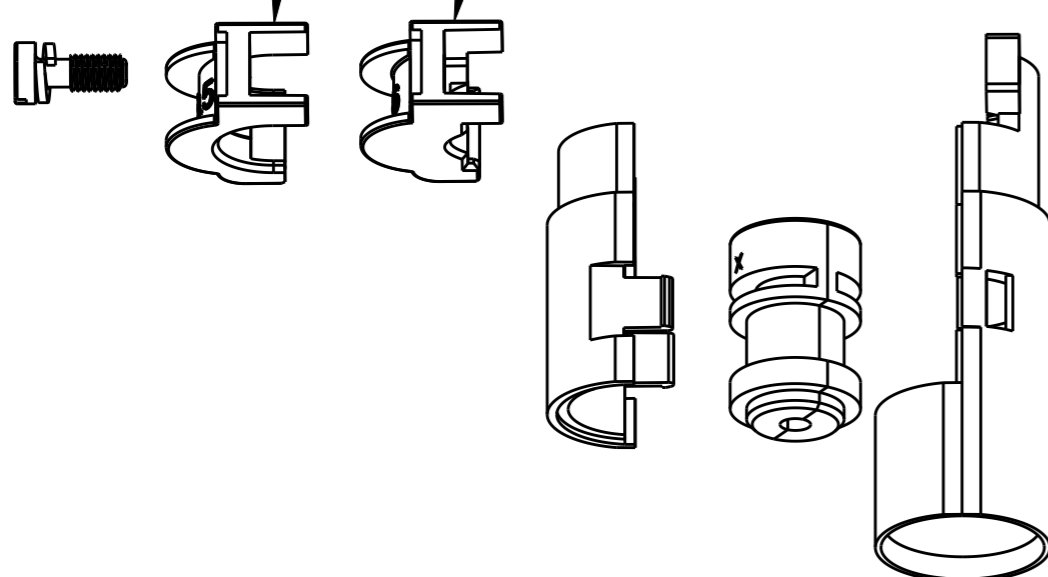
- TECHNICAL CHARACTERISTICS:
INSULATION MATERIAL: PC
RATED VOLTAGE: 50V
RATED CURRENT: 16A
RATED IMPULSE VOLTAGE: 0.8KV
POLLUTION DEGREE: 3
FLAMMABILITY: UL94V-0
WIRE RANGE: 0.14-4.0 mm² (26-12 AWG)
CONTACT TYPE: CRIMP CONTACT
- CONTACT NEED TO BE ORDERED SEPARATELY.
(ORDER No. REFER TO DRAWING: T20300X10XX000)

注释:

- 技术参数:
绝缘材料: PC
额定电压: 50V
额定电流: 16A
额定脉冲电压: 0.8KV
污染等级: 3
阻燃等级: UL94V-0
接线范围: 0.14-4.0 mm² (26-12 AWG)
接线类型: 冷压接
- 端子需要单独订购.
(订货号参考图面: T20300X10XX000)

FOR Ø6-9.5mm CABLE
用于直径 Ø6-9.5mm 电缆线

FOR Ø3-6mm CABLE
用于直径 Ø3-6mm 电缆线



T2580011154-007	PIN-Q1-M	QUINTAX MALE CONTACT 1-POS QUINTAX 1-POS 公针
PART NUMBER 料号	PART DESCRIPTION 描述	

THIS DRAWING IS A CONTROLLED DOCUMENT.

DIMENSIONS:	TOLERANCES UNLESS OTHERWISE SPECIFIED:
mm	
	0 PLC ±-
	1 PLC ±-
	2 PLC ±-
	3 PLC ±-
	4 PLC ±-
	ANGLES ±-
MATERIAL	FINISH
-	-
-	-

DWN	22DEC2017
YORK CHEN	
CHK	22DEC2017
GINO YAO	
APVD	22DEC2017
CHRIS WANG	
PRODUCT SPEC	108-137067
APPLICATION SPEC	114-137067
WEIGHT	-
CUSTOMER DRAWING	

TE Connectivity		NAME		RESTRICTED TO
		QUINTAX CONTACT 1-POS PIN-Q1-M		
SIZE	CAGE CODE	DRAWING NO		
A3	00779	©-T2580011154007		
SCALE		SHEET	OF	REV
2:1		1	1	A