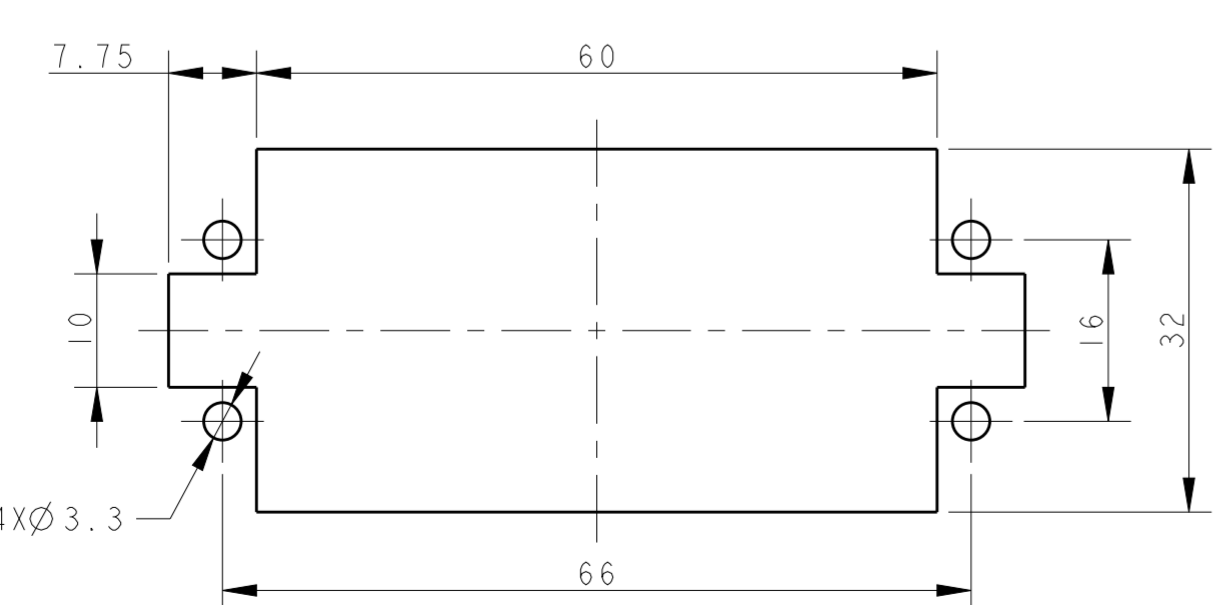
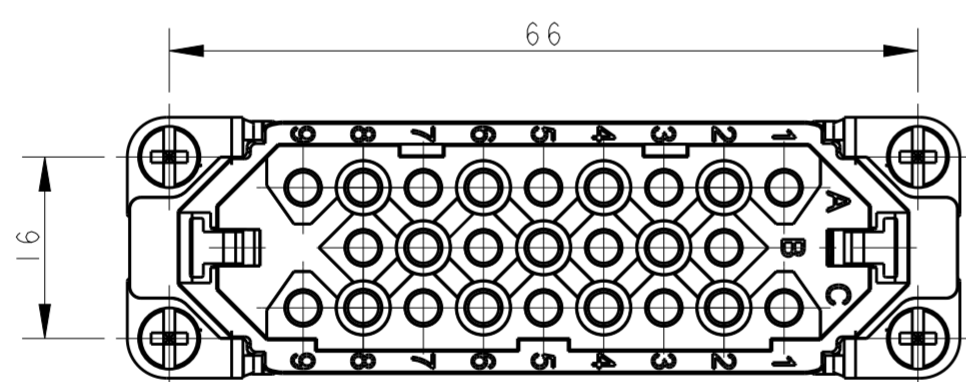
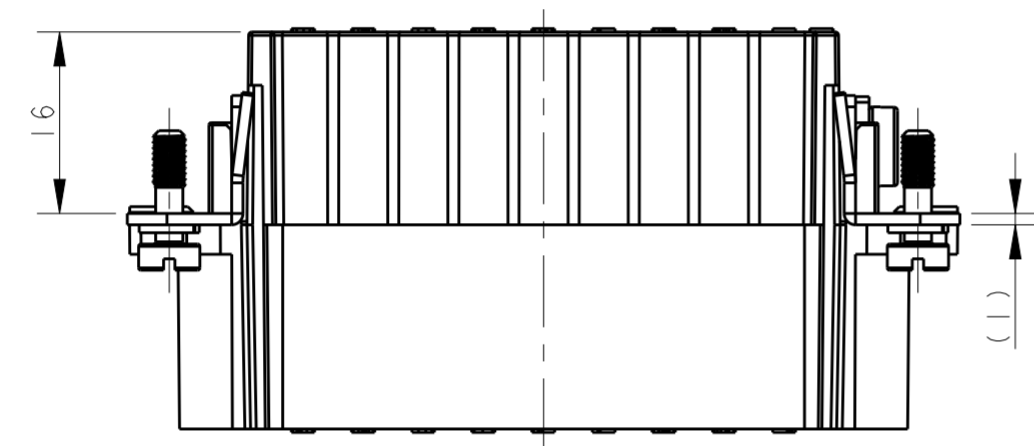
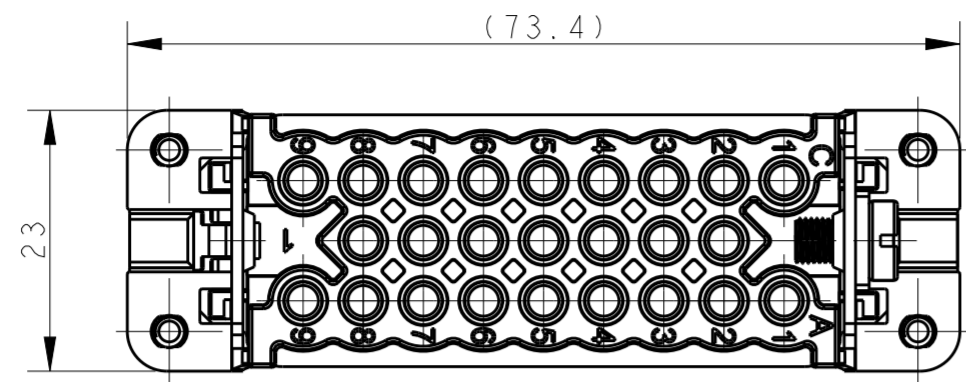


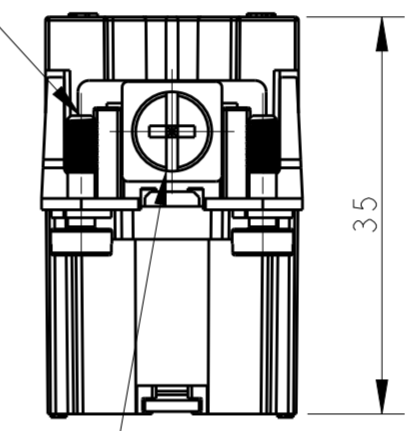
THIS DRAWING IS UNPUBLISHED. RELEASED FOR PUBLICATION 20
 © COPYRIGHT 20 BY - ALL RIGHTS RESERVED.

REVISIONS					
P	LTR	DESCRIPTION	DATE	DWN	APVD
	A	INITIAL	23NOV2017	QY	CW



PANEL CUT OUT FOR INSERTS FOR USE WITHOUT HOODS/HOUSINGS

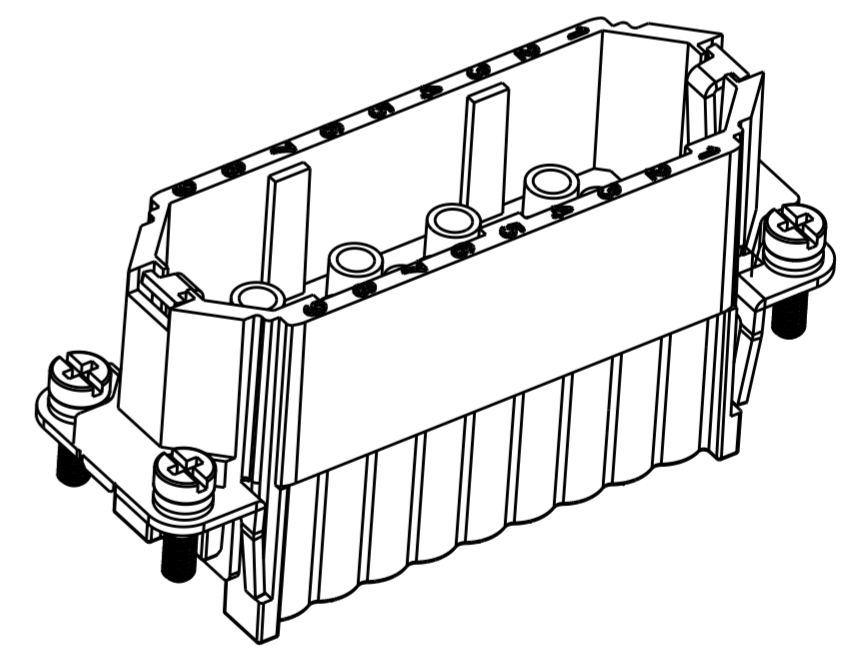
4X M3 SCREW
 RECOMMENDED TIGHTENING TORQUE 0.5Nm
 4X M3螺丝
 推荐锁紧力矩0.5Nm



M4 SCREW
 RECOMMENDED TIGHTENING TORQUE 1.2Nm
 M4螺丝
 推荐锁紧力矩1.2Nm

- NOTES:
- TECHNICAL CHARACTERISTICS:
 INSULATION MATERIAL: PC
 RATED VOLTAGE: 250 V
 RATED CURRENT: 10 A
 INSULATION RESISTANCE: >=400MΩ
 RATED IMPULSE VOLTAGE: 4 KV
 POLLUTION DEGREE: 3
 FLAMMABILITY: UL94V-0
 MATING CYCLES: 500 CYCLES
 WIRE RANGE: 0.14-2.5 mm² (26-14 AWG)
 CONTACT TYPE: CRIMP CONTACT
 - CONTACT NEED TO BE ORDERED SEPARATELY.
 (ORDER No. REFER TO DRAWING:T20200X10XX000)

- 注释:
- 技术参数:
 绝缘材料: PC
 额定电压: 250V
 额定电流: 10A
 绝缘电阻: >=400MΩ
 额定脉冲电压: 4 KV
 污染等级: 3
 阻燃等级: UL94V-0
 插拔次数: 500次
 接线范围: 0.14-2.5 mm² (26-14 AWG)
 接线类型: 冷压接
 - 端子需要单独订购。
 (订货号参考图面: T20200X10XX000)



T2020252101-001	HD-025-M	HD-025 MALE INSERT, STAINLESS STEEL SCREW, NO LOGO HD-025公插, 带不锈钢螺丝, 无LOGO
PART NUMBER 料号		PART DESCRIPTION 描述
THIS DRAWING IS A CONTROLLED DOCUMENT.		DWN 23NOV2017 CHK 23NOV2017 APVD 23NOV2017 CHRIS WANG
DIMENSIONS: mm		TE Connectivity
TOLERANCES UNLESS OTHERWISE SPECIFIED: 0 PLC ± 1 PLC ± 2 PLC ± 3 PLC ± 4 PLC ± ANGLES ±		NAME HD-025-M
MATERIAL TBD		PRODUCT SPEC 108-137042 APPLICATION SPEC 114-137042
FINISH -		SIZE A2
CUSTOMER DRAWING		SCALE 3:2 SHEET 1 OF 1 REV A