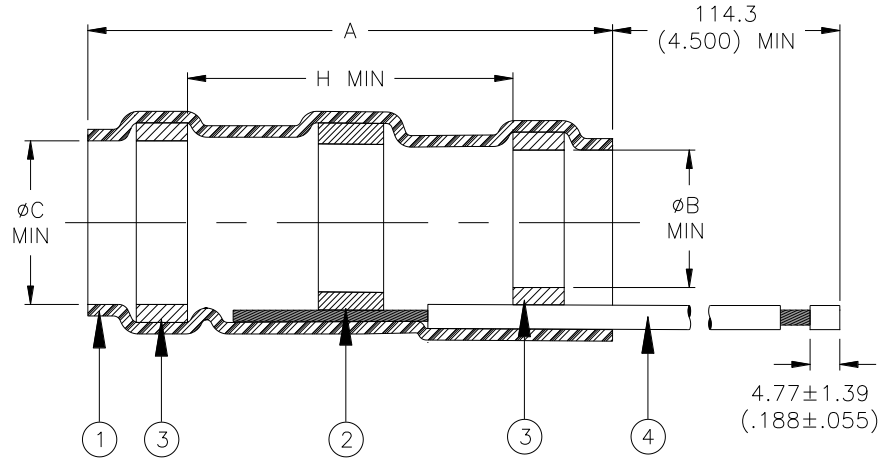


# CUSTOMER DRAWING



Product Name	Product Dimensions				Cable Dimensions					
	A±1.75 (A±0.07)	øB min	øC min	H min	øE max	øF min	øG min	øD max	J±0.5 (J±0.02)	
SO63-3-55-22-5-SE	16.5 (0.650)	4.30 (0.170)	5.08 (0.200)	8.25 (0.325)	5.08 (0.200)	2.15 (0.085)	1.25 (0.050)	4.30 (0.170)	7.5 (0.295)	

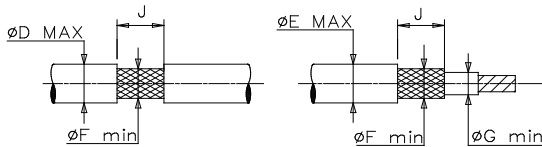
## MATERIALS


- INSULATION SLEEVE: Heat-shrinkable, transparent blue, radiation cross-linked modified polyvinylidene fluoride.
- SOLDER PREFORM WITH FLUX AND THERMAL INDICATOR:  
 SOLDER: TYPE Sn63 per ANSI-J-STD-006.  
 FLUX: TYPE ROL1 per ANSI-J-STD-004.  
 THERMAL INDICATOR: Fusible ring, melt point: 221°C.
- MELTABLE RING: Environment resistant thermoplastic. Color: blue.
- GROUND LEAD: MIL-W-22759/32-22-5. Color: green

## APPLICATION

- These parts will provide a shield termination assembly which will meet the requirements of Raychem Specification RT-1404 when installed in accordance with Raychem process standard RCPS-100-70 on cables rated for at least 125°C, meeting the dimensional criteria listed, having tin or silver plated shields. Consult TE Connectivity for compatible insulation material.
- Temperature rating: -55°C to +150°C.

For best results, prepare the cable as shown:



		<b>Raychem</b> DEVICES	TITLE: <b>SOLDERSLEEVE DEVICE WITH PRE-INSTALLED LEAD IMMERSION RESISTANT</b>		
Unless otherwise specified dimensions are in millimeters. [Inches dimensions are shown in brackets]			DOCUMENT NO.: <b>SO63-3-55-22-5-SE</b>		
TOLERANCES: 0.00 N/A 0.0 N/A 0 N/A	ANGLES: N/A ROUGHNESS IN MICRON	TE Connectivity reserves the right to amend this drawing at any time. Users should evaluate the suitability of the product for their application.	REV : <b>E1</b>	DATE : <b>27OCT2023</b>	
PREPARED BY: <b>UNGUYEN</b>	CAGE CODE: <b>06090</b>	ECN NUMBER: <b>ECN-23-234831</b>	SCALE: <b>NTS</b>	SIZE: <b>A</b>	SHEET: <b>1 of 1</b>

© 2022 TE Connectivity Ltd. Family of Companies. All Rights Reserved.

\*TE Connectivity, TE connectivity (logo), Raychem, Thermofit, SolderSleeve are trademarks