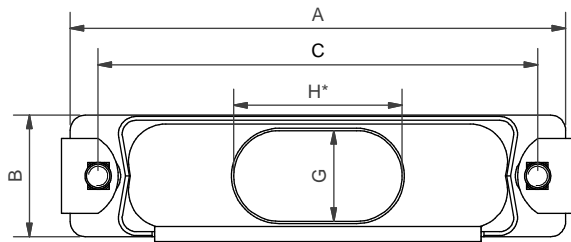
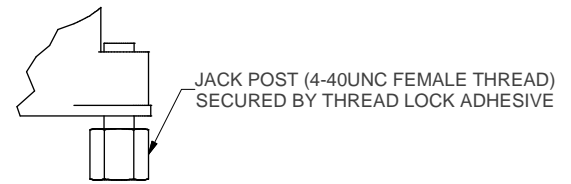


JACK POST OPTION



* - H NOT APPLICABLE FOR CIRCULAR ENTRY



NOTES
 SPARES:
 HARDWARE:
 100P2627-HKIT (SCREW)
 100P2627-FKIT (JACKPOST)

RFI COMB:
 100P2627-**-**COMB;
 WHERE ** DENOTES SHELL SIZE

HARDWARE TORQUE VALUE: 5.2lb.in (58,75cNm)

100P2627-25-08-1-CHP-(D-JP-L45)

SERIES
 SHELL SIZE (SEE TABLE 1)
 ENTRY SIZE (SEE TABLE 2)
 MATERIAL (1 - ALUM ALLOY)
 FINISH/PLATING (SEE TABLE 3)
 RFI COMB OPTION (D - DOUBLE COMB ASSEMBLY)
 (OMIT FOR 1 OFF COMBS PER ASSEMBLY)
 (X - NO COMB REQUIRED)
 JACK POST OPTION (OMIT FOR JACK SCREW)
 BACKSHELL DEPTH IN MM (IN INCREMENTS OF 5MM)
 (OMIT FOR STANDARD 30MM - MIN 20,0/MAX 60,0MM)

TABLE 1

SHELL SIZE	A	B	C	MAX CIRCULAR ENTRY	MAX ELONGATED ENTRY
09	31,0	13,0	24,99	06	08
15	39,2	13,0	33,32	06	10
25	53,0	13,0	47,04	06	11
37	69,5	13,0	63,50	06	12
50	66,9	16,0	61,11	08	16
104	69,7	17,5	63,50	08	16

TABLE 2

ENTRY SIZE	G DIA	G WIDTH	H
01	3,18	-	
02	4,75	-	
03	6,86	-	
04	7,37	-	
05	7,92	-	
06	10,03	-	
07	10,67	9,7*	11,8*
08	12,70	9,7*	17,9*
09	-	9,7	22,0
10	-	9,7	26,5
11	-	9,7	29,0
12	-	9,7	34,0
13	-	9,7	37,5
14	-	9,7	42,5
15	-	9,7	49,0
16	-	9,7	55,0

* - FOR SHELL SIZES 09, 15, 25 AND 37 ONLY

TABLE 3

PLATING CODE	DESCRIPTION
C	ELECTROLESS NICKEL
CHP	HI PHOSPHOR ELECTROLESS NICKEL TO BS EN ISO 4527:2003

CUSTOMER APPROVAL

COMPANY	NAME	SIGNATURE	DATE

DRAWN D. WRIGLEY	DATE 05/11/2018
APPROVED BY M. PAUL	07/10/2018
CHECKED BY R. STYLES	06/11/2018
DOC TYPE Customer Drawing	
ISSUE/REV AA	DCR
NCAGE CODE U5792	WEIGHT N/A

3RD ANGLE PROJECTION NOT TO SCALE

UNLESS OTHERWISE SPECIFIED ALL DIMENSIONS IN MILLIMETRES

GENERAL TOL
 LINEAR +/-0,25MM
 ANGULAR +/- 1°

MATERIAL
 SEE PART NUMBER BREAKDOWN

FINISH
 SEE PART NUMBER BREAKDOWN

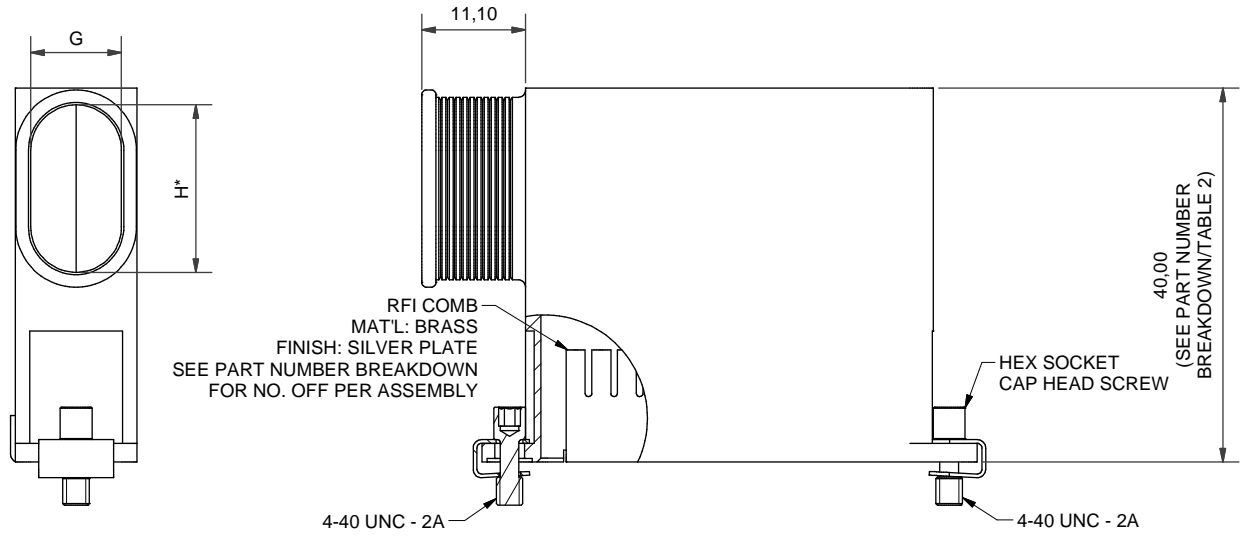
PART NUMBER: 100P2627 SERIES	TITLE: D-SUB BACKSHELL ASSEMBLY WITH RFI COMB
ASSY USED ON: MIL-DTL-24308	
RESTRICTED TO:	
THIS DRAWING IS COPYRIGHT AND THE PROPERTY OF POLAMCO LTD IT MUST NOT BE COPIED, USED FOR MANUFACTURE OR OTHERWISE DISCLOSED WITHOUT PRIOR WRITTEN CONSENT OF THE COMPANY.	
POLAMCO LTD, WESTON LOCK, LOWER BRISTOL ROAD BATH BA2 1EP	SHT 1

Polamco

STE
connectivity

DRAWING NO:
P9425

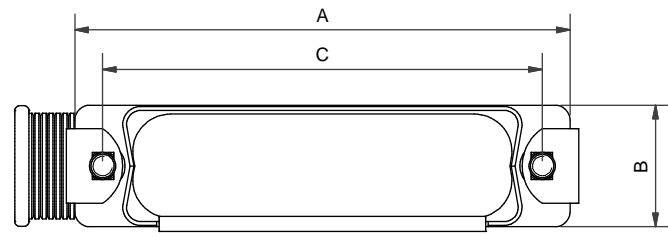
* - H NOT APPLICABLE FOR CIRCULAR ENTRY



NOTES
 SPARES:
 HARDWARE:
 100P2627-HKIT (SCREW)
 100P2627-FKIT (JACKPOST)

RFI COMB:
 100P2627-**-**COMB;
 WHERE ** DENOTES SHELL SIZE

HARDWARE TORQUE VALUE: 5.2lb.in (58,75cNm)



100P2627R25-08-1-CHP-(D-JP-L45)

SERIES
 90° VERSION (END OUTLET)
 SHELL SIZE (SEE TABLE 1)
 ENTRY SIZE (SEE TABLE 2)
 MATERIAL (1 - ALUM ALLOY)
 FINISH/PLATING (SEE TABLE 3)
 RFI COMB OPTION (D - DOUBLE COMB ASSEMBLY)
 (OMIT FOR 1 OFF COMBS PER ASSEMBLY)
 (X - NO COMB REQUIRED)
 JACK POST OPTION (OMIT FOR JACK SCREW)
 BACKSHELL DEPTH IN MM (IN INCREMENTS OF 5MM)
 (OMIT FOR STANDARD 30MM - MIN SEE TABLE 2/MAX 60,0MM)

TABLE 1

SHELL SIZE	A	B	C	MAX CIRCULAR ENTRY
09	31,0	13,0	24,99	06
15	39,2	13,0	33,32	06
25	53,0	13,0	47,04	06
37	69,5	13,0	63,50	06
50	66,9	16,0	61,11	08
104	69,7	17,5	63,50	08

TABLE 2

ENTRY SIZE	G DIA	G WIDTH	H	MIN HEIGHT
01	3,18	-	-	25,0
02	4,75	-	-	25,0
03	6,86	-	-	25,0
04	7,37	-	-	30,0
05	7,92	-	-	30,0
06	10,03	-	-	30,0
07	10,67	9,7*	11,8*	30,0
08	12,70	9,7*	17,9*	40,0
09	-	9,7	22,0	40,0
10	-	9,7	26,5	45,0
11	-	9,7	29,0	50,0
12	-	9,7	34,0	55,0
13	-	9,7	37,5	60,0

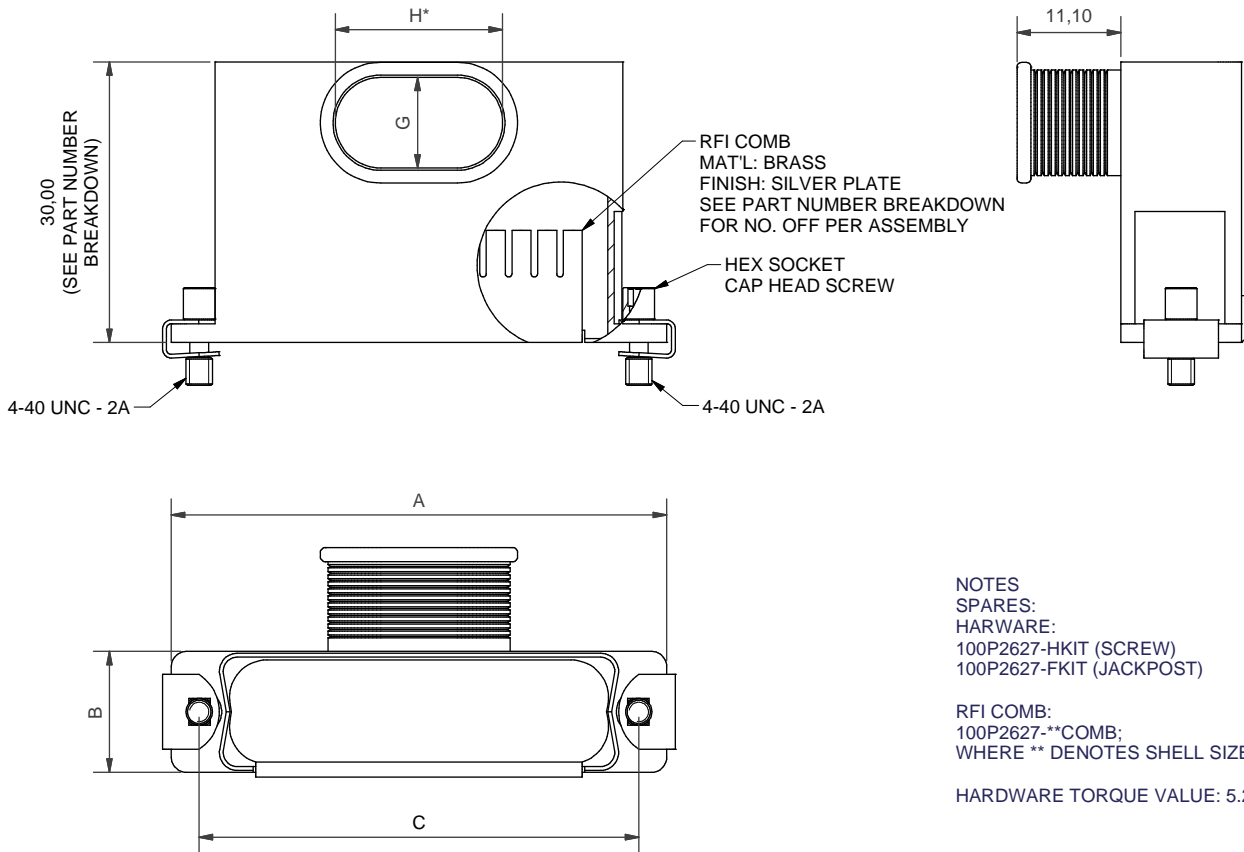
TABLE 3

PLATING CODE	DESCRIPTION
C	ELECTROLESS NICKEL
CHP	HI PHOSPHOR ELECTROLESS NICKEL TO BS EN ISO 4527:2003

* - FOR SHELL SIZES 09, 15, 25 AND 37 ONLY

DRAWN D. WRIGLEY		DATE 05/11/2018			PART NUMBER: 100P2627 SERIES				
APPROVED BY M. PAUL		07/10/2018			TITLE: D-SUB BACKSHELL ASSEMBLY WITH RFI COMB				
CHECKED BY R. STYLES		06/11/2018		UNLESS OTHERWISE SPECIFIED ALL DIMENSIONS IN MILLIMETRES GENERAL TOL LINEAR +/-0,25MM ANGULAR +/- 1°	ASSY USED ON: MIL-DTL-24308				
DOC TYPE Customer Drawing					RESTRICTED TO:				
ISSUE/REV AA		DCR ---		MATERIAL SEE PART NUMBER BREAKDOWN	POLAMCO LTD, WESTON LOCK, LOWER BRISTOL ROAD BATH BA2 1EP				SHT 2
NCAGE CODE U5792		WEIGHT N/A			FINISH SEE PART NUMBER BREAKDOWN	THIS DRAWING IS COPYRIGHT AND THE PROPERTY OF POLAMCO LTD IT MUST NOT BE COPIED, USED FOR MANUFACTURE OR OTHERWISE DISCLOSED WITHOUT PRIOR WRITTEN CONSENT OF THE COMPANY.			

* - H NOT APPLICABLE FOR CIRCULAR ENTRY



NOTES
 SPARES:
 HARWARE:
 100P2627-HKIT (SCREW)
 100P2627-FKIT (JACKPOST)

RFI COMB:
 100P2627-**-COMB;
 WHERE ** DENOTES SHELL SIZE

HARDWARE TORQUE VALUE: 5.2lb.in (58,75cNm)

100P2627N25-08-1-CHP-(D-JP-L45)

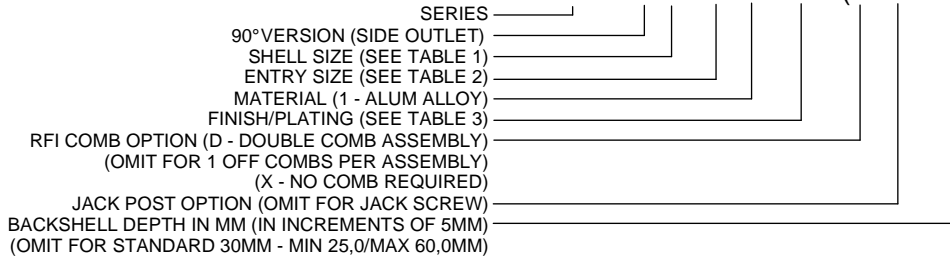


TABLE 1

SHELL SIZE	A	B	C	MAX ENTRY
09	31,0	13,0	24,99	08
15	39,2	13,0	33,32	10
25	53,0	13,0	47,04	12
37	69,5	13,0	63,50	13
50	66,9	16,0	61,11	13
104	69,7	17,5	63,50	13

TABLE 2

ENTRY SIZE	G DIA	G WIDTH	H
01	3,18	-	
02	4,75	-	
03	6,86	-	
04	7,37	-	
05	7,92	-	
06	10,03	-	
07	10,67	-	
08	12,70	-	
09	-	9,7	22,0
10	-	9,7	26,5
11	-	9,7	29,0
12	-	9,7	34,0
13	-	9,7	37,5

TABLE 3

PLATING CODE	DESCRIPTION
C	ELECTROLESS NICKEL
CHP	HI PHOSPHOR ELECTROLESS NICKEL TO BS EN ISO 4527:2003

DRAWN D. WRIGLEY	DATE 05/11/2018
APPROVED BY M. PAUL	07/10/2018
CHECKED BY R. STYLES	06/11/2018
DOC TYPE Customer Drawing	
ISSUE/REV AA	DCR ---
NCAGE CODE U5792	WEIGHT N/A

3RD ANGLE PROJECTION NOT TO SCALE

UNLESS OTHERWISE SPECIFIED ALL DIMENSIONS IN MILLIMETRES

GENERAL TOL
 LINEAR +/-0,25MM
 ANGULAR +/- 1°

MATERIAL
 SEE PART NUMBER BREAKDOWN

FINISH
 SEE PART NUMBER BREAKDOWN

PART NUMBER:
100P2627 SERIES

TITLE:
D-SUB BACKSHELL ASSEMBLY WITH RFI COMB

ASSY USED ON: MIL-DTL-24308

RESTRICTED TO:

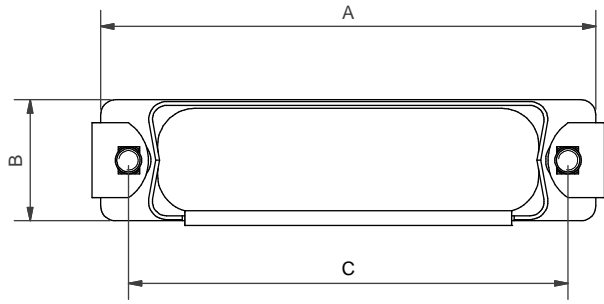
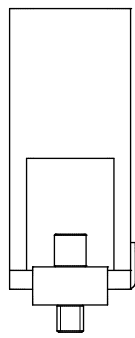
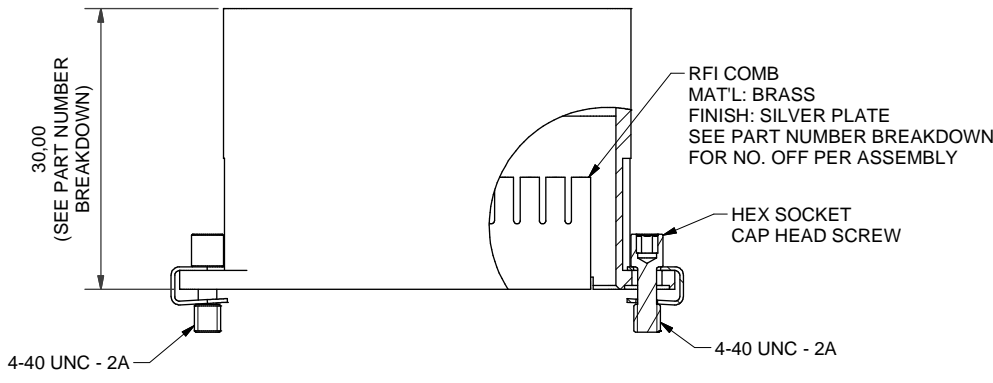
POLAMCO LTD, WESTON LOCK, LOWER BRISTOL ROAD BATH BA2 1EP

THIS DRAWING IS COPYRIGHT AND THE PROPERTY OF POLAMCO LTD IT MUST NOT BE COPIED, USED FOR MANUFACTURE OR OTHERWISE DISCLOSED WITHOUT PRIOR WRITTEN CONSENT OF THE COMPANY.

Polamco

STE
connectivity

DRAWING NO:
P9425



NOTES
 SPARES:
 HARDWARE:
 100P2627-HKIT (SCREW)
 100P2627-FKIT (JACKPOST)

RFI COMB:
 100P2627-**COMB;
 WHERE ** DENOTES SHELL SIZE

HARDWARE TORQUE VALUE: 5.2lb.in (58,75cNm)

100P2627B25-1-CHP-(D-JP-L45)
 SERIES _____
 ENTRY STYLE (B - BLANKING CAN, NO OUTLET) _____
 SHELL SIZE (SEE TABLE 1) _____
 MATERIAL (1 - ALUM ALLOY) _____
 FINISH/PLATING (SEE TABLE 3) _____
 RFI COMB OPTION (D - DOUBLE COMB ASSEMBLY) _____
 (OMIT FOR 1 OFF COMBS PER ASSEMBLY)
 (X - NO COMB REQUIRED) _____
 JACK POST OPTION (OMIT FOR JACK SCREW) _____
 BACKSHELL DEPTH IN MM (IN INCREMENTS OF 5MM)
 (OMIT FOR STANDARD 30MM - MIN 20,0/MAX 60,0MM) _____

TABLE 1

SHELL SIZE	A	B	C
09	31,0	13,0	24,99
15	39,2	13,0	33,32
25	53,0	13,0	47,04
37	69,5	13,0	63,50
50	66,9	16,0	61,11
104	69,7	17,5	63,50

TABLE 3

PLATING CODE	DESCRIPTION
C	ELECTROLESS NICKEL
CHP	HI PHOSPHOR ELECTROLESS NICKEL TO BS EN ISO 4527:2003

DRAWN D. WRIGLEY	DATE 05/11/2018
APPROVED BY M. PAUL	07/10/2018
CHECKED BY R. STYLES	06/11/2018
DOC TYPE Customer Drawing	
ISSUE/REV AA	DCR ---
NCAGE CODE U5792	WEIGHT N/A

3RD ANGLE PROJECTION NOT TO SCALE

UNLESS OTHERWISE SPECIFIED ALL DIMENSIONS IN MILLIMETRES

GENERAL TOL
 LINEAR +/-0,25MM
 ANGULAR +/- 1°

MATERIAL
 SEE PART NUMBER BREAKDOWN

FINISH
 SEE PART NUMBER BREAKDOWN

PART NUMBER:
100P2627 SERIES

TITLE:
D-SUB BACKSHELL ASSEMBLY WITH RFI COMB

ASSY USED ON: MIL-DTL-24308

RESTRICTED TO:

POLAMCO LTD, WESTON LOCK, LOWER BRISTOL ROAD, BATH BA2 1EP

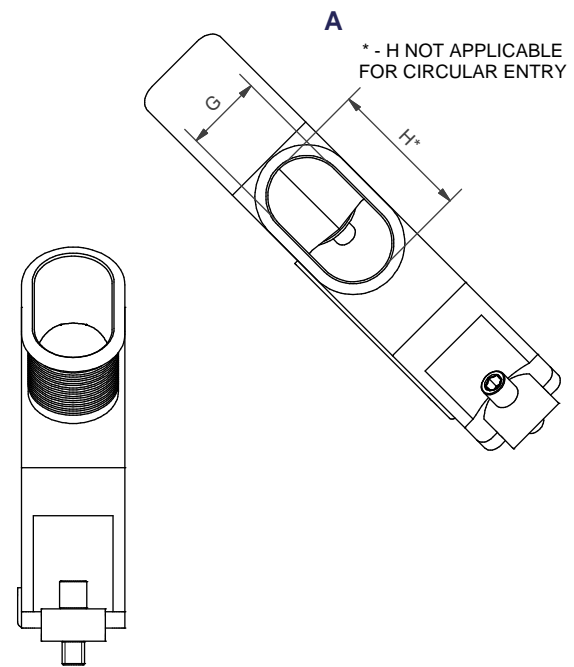
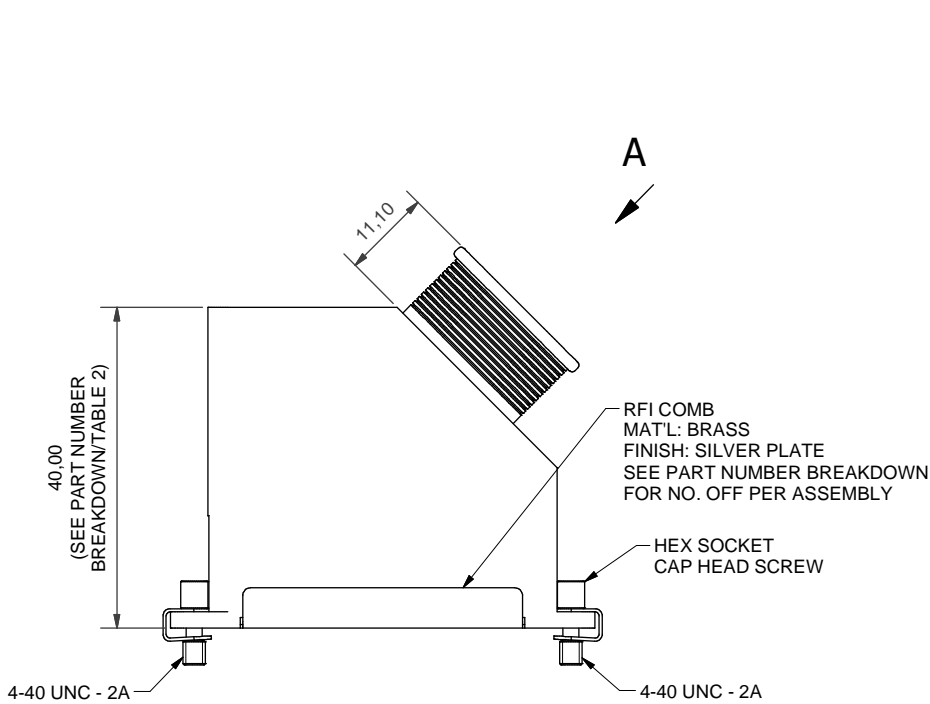
THIS DRAWING IS COPYRIGHT AND THE PROPERTY OF POLAMCO LTD IT MUST NOT BE COPIED, USED FOR MANUFACTURE OR OTHERWISE DISCLOSED WITHOUT PRIOR WRITTEN CONSENT OF THE COMPANY.

Polamco

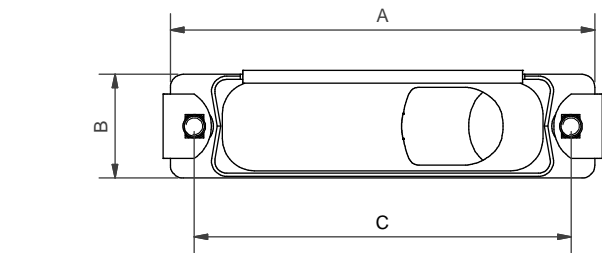
STE
connectivity

DRAWING NO:
P9425

SHT
4



* - H NOT APPLICABLE FOR CIRCULAR ENTRY



NOTES
 SPARES:
 HARDWARE:
 100P2627-HKIT (SCREW)
 100P2627-FKIT (JACKPOST)

RFI COMB:
 100P2627-**COMB;
 WHERE ** DENOTES SHELL SIZE

HARDWARE TORQUE VALUE: 5.2lb.in (58,75cNm)

100P2627F25-08-1-CHP-(D-JP-L45)

SERIES _____
 45° VERSION (END OUTLET) _____
 SHELL SIZE (SEE TABLE 1) _____
 ENTRY SIZE (SEE TABLE 2) _____
 MATERIAL (1 - ALUM ALLOY) _____
 FINISH/PLATING (SEE TABLE 3) _____
 RFI COMB OPTION (D - DOUBLE COMB ASSEMBLY) _____
 (OMIT FOR 1 OFF COMBS PER ASSEMBLY)
 (X - NO COMB REQUIRED) _____
 JACK POST OPTION (OMIT FOR JACK SCREW) _____
 BACKSHELL DEPTH IN MM (IN INCREMENTS OF 5MM)
 (OMIT FOR STANDARD 30MM - MIN SEE TABLE 2/MAX 60,0MM) _____

TABLE 1

SHELL SIZE	A	B	C	MAX CIRCULAR ENTRY	MAX ENTRY
09	31,0	13,0	24,99	06	08
15	39,2	13,0	33,32	06	11
25	53,0	13,0	47,04	06	13
37	69,5	13,0	63,50	06	13
50	66,9	16,0	61,11	08	13
104	69,7	17,5	63,50	08	13

TABLE 2

ENTRY SIZE	G DIA	G WIDTH	H	MIN HEIGHT
01	3,18	-	-	25,0
02	4,75	-	-	25,0
03	6,86	-	-	25,0
04	7,37	-	-	30,0
05	7,92	-	-	30,0
06	10,03	-	-	30,0
07	10,67	9,7*	11,8*	30,0
08	12,70	9,7*	17,9*	40,0
09	-	9,7	22,0	40,0
10	-	9,7	26,5	45,0
11	-	9,7	29,0	50,0
12	-	9,7	34,0	55,0
13	-	9,7	37,5	55,0

* - FOR SHELL SIZES 09, 15, 25 AND 37 ONLY

TABLE 3

PLATING CODE	DESCRIPTION
C	ELECTROLESS NICKEL
CHP	HI PHOSPHOR ELECTROLESS NICKEL TO BS EN ISO 4527:2003

DRAWN D. WRIGLEY		DATE 05/11/2018			PART NUMBER: 100P2627 SERIES				
APPROVED BY M. PAUL		07/10/2018			TITLE: D-SUB BACKSHELL ASSEMBLY WITH RFI COMB				
CHECKED BY R. STYLES		06/11/2018		UNLESS OTHERWISE SPECIFIED ALL DIMENSIONS IN MILLIMETRES GENERAL TOL LINEAR +/-0,25MM ANGULAR +/- 1°	ASSY USED ON: MIL-DTL-24308				RESTRICTED TO: POLAMCO LTD, WESTON LOCK, LOWER BRISTOL ROAD BATH BA2 1EP
DOC TYPE Customer Drawing		MATERIAL SEE PART NUMBER BREAKDOWN			SHT 5				
ISSUE/REV AA		DCR		FINISH SEE PART NUMBER BREAKDOWN		DRAWING NO.: P9425			
NCAGE CODE U5792		WEIGHT N/A		THIS DRAWING IS COPYRIGHT AND THE PROPERTY OF POLAMCO LTD IT MUST NOT BE COPIED, USED FOR MANUFACTURE OR OTHERWISE DISCLOSED WITHOUT PRIOR WRITTEN CONSENT OF THE COMPANY.					