

TYCO ELECTRONICS RESERVES THE RIGHT TO AMEND THIS DRAWING AT ANY TIME. USERS SHOULD EVALUATE THE SUITABILITY OF THE PRODUCT FOR THEIR APPLICATION.

REVISIONS

LTR	DESCRIPTION	DATE	APPROVED
A	INITIAL RELEASE PER DCR# C060235	May/4/06	M.HIGGY
B	PER ECO-07-008361	April/10/07	M.HIGGY

MTCTQ KT 1 R 4F S F

- = WITHOUT GROUND BLOCK
- = SOCKET INSERT
- = 4 CAVITIES
- = RECEPTACLE SHELL
- = 1 INCH
- = KIT
- = FIBER OPTIC CONNECTOR WITH QUICK DISCONNECT HARDWARE

NOTES:

1. THIS DRAWING IS FOR THE PURPOSE OF ASSEMBLY AND PACKAGING THIS KIT.
2. THE COMPONENTS LISTED HEREON ARE IDENTIFIED WITH THEIR INDIVIDUAL PART NUMBER. THE KIT PACKAGE IS IDENTIFIED BY MARKING RAYCHEM KIT NUMBER AND CUSTOMER NUMBER (BACC68H1-4FS).
3. REFER TO THE INDIVIDUAL COMPONENT DRAWING FOR CONFIGURATION DETAILS.
4. THIS KIT CONSISTS OF:

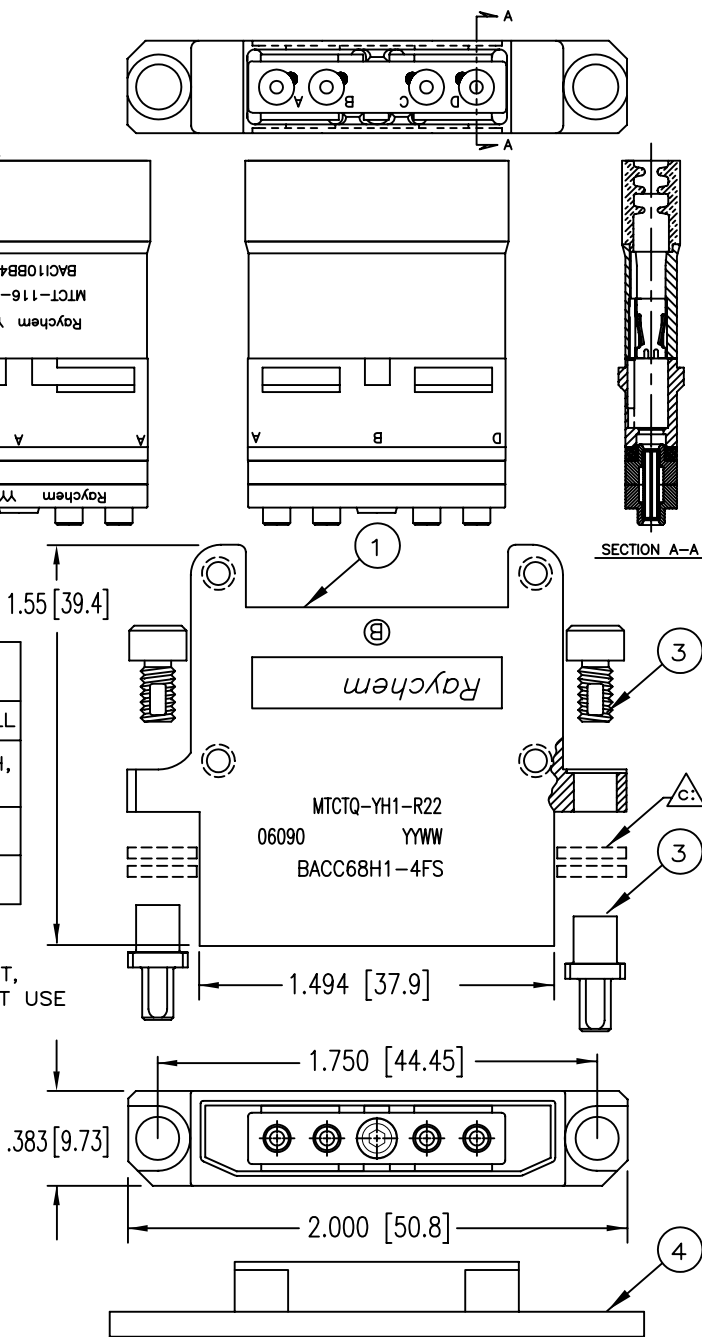
ITEM	COMPONENT DRAWING NUMBER	QTY	DESCRIPTION
1	MTCTQ-YH1-R22	1	ASS'Y. HOUSING RECEPTACLE SHELL
2	MTCT-116-001S	1	INSERT ASSEMBLY SOCKET, 1 INCH, 4 CAVITIES
3	CHA-0295	2	POST AND SCREW KIT
4	CHA-1600	1	DUST CAP

5. OPTIONS NOT INCLUDED IN KIT:

- a: TWO CABLE BRACKETS ARE DESIGNED TO BE USED WITH THIS KIT, THEY ARE NOT SHOWN IN THIS DRAWING, FOR STRAIGHT BRACKET USE CHA-1598, FOR RIGHT/LEFT ANGLE BRACKET USE CHA-1599.
- b: TO REMOVE THE INSERT FROM THE SHELL USE REMOVAL TOOL CTA-0161, 2 PIECES ARE REQUIRED.
- c: THE HARDWARE FOR THIS CONNECTOR IS DESIGNED TO BE USED ON 0.063 INCH PANEL THICKNESS. OTHERWISE 2 THIN WASHERS ARE REQUIRED FOR EACH POST, USE PART D-659-0042.

If this document is printed it becomes uncontrolled. Check for the latest revision

SPECIFICATION CONTROL DRAWING



©2006-2007 Tyco Electronics Corporation. All rights reserved.

UNLESS OTHERWISE SPECIFIED DIMENSIONS ARE IN INCHES. METRIC DIMENSIONS ARE IN BRACKETS.

DECIMALS  
 .XXX ± 0.005 [ 0.13 mm]  
 .XX ± 0.01 [ 0.25 mm]  
 .X ± 0.1 [ 0.50 mm]

ANGLES  
 .X ± 0.5 DEG

DRAWN	ZSOFIA.ORBAN	2MAY2006
CHECKED		
APPROVED	M.HIGGY	2MAY2006
REVISED		
CAD NAME:	MTCTQKT1R4FSF	
THIRD ANGLE PROJECTION		

		Tyco Electronics Corporation 300 Constitution Drive Menlo Park, CA. 94025 U.S.A.			
TITLE KIT, RECEPTACLE SHELL 1 INCH NICKEL PLATED WITH FIBER OPTICS SOCKET INSERT, 4 CAVITIES MTCT-SERIES					
SIZE	CODE IDENT. NO.	DWG. NO.	REV:		
A	06090	MTCTQKT1R4FSF	B		
DO NOT SCALE THIS DRAWING			SHEET 1 OF 1		