

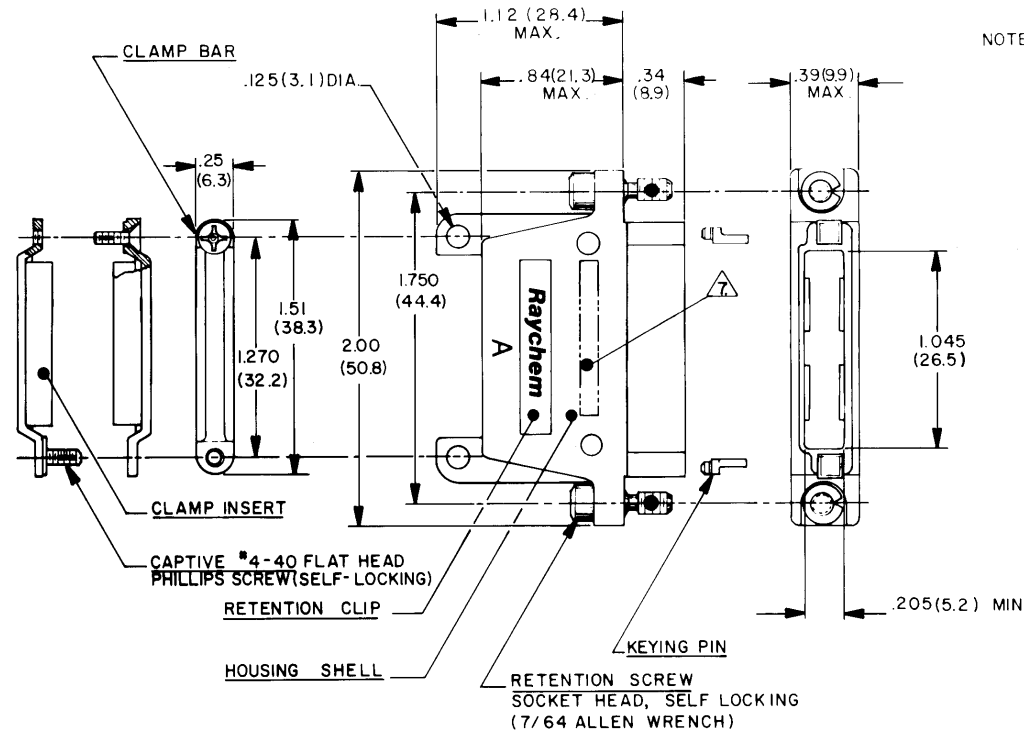
4

3

2

1

ZONE		LTR		REVISIONS		DATE	APPROVED
				DESCRIPTION			
N/C		INITIAL		RELEASE PER ECN T-		11/22/91	JJ



NOTES:

1. MATERIALS:

- 1-A. HOUSING SHELL; ALUMINUM ALLOY PER QQ-A-591.
 1-B. RETENTION SCREW; STAINLESS STEEL PER QQ-S-763, 300 SERIES.
 1-C. RETENTION CLIP; COPPER ALLOY 172 PER QQ-C-533.
 1-D. KEYING PIN; POLYARYLENE THERMOPLASTIC, MOLDED.
 1-E. CLAMP BAR; STAINLESS STEEL PER QQ-S-763, 300 SERIES.
 1-F. CLAMP INSERT; SILICONE ELASTOMER PER ZZ-R-765.
 1-G. CAPTIVE SCREW; STAINLESS STEEL PER QQ-S-763, 300 SERIES.

2. FINISH:

- 2-A. HOUSING SHELL; BLACK NICKEL
 2-B. RETENTION SCREW; BLACK NICKEL
 2-C. RETENTION CLIP; BLACK NICKEL
 2-D. CLAMP BAR; BLACK NICKEL
 2-E. CAPTIVE SCREW; BLACK NICKEL

3. HOUSING MEETS THE REQUIREMENTS OF **Raychem** SPECIFICATION D-6011.
 4. FOR MOUNTING/MATING AND KEYING INFORMATION, SEE **Raychem** DRAWING D652-0012.
 5. (2) KEYING PINS ARE SUPPLIED NOT INSTALLED WITH EACH PLUG.
 6. DUST COVER SUPPLIED INSTALLED WITH EACH PLUG.

Raychem PART NO MTC100-YHI-011 AND DATE CODE IS STAMPED APPROXIMATELY AS SHOWN.

CONNECTOR SPECIFICATION CONTROL DRAWING

UNLESS OTHERWISE SPECIFIED DIMENSIONS ARE IN INCHES BRACKETED DIMENSIONS () ARE METRIC AND TOLERANCES ARE: .XX: ±.005 (0.1 M.M.) .XX: ±.02 (0.5 M.M.) Δ: ±	DRAWN	CACELA	1-25-84	Raychem TITLE PLUG HOUSING 1 INCH WITH CABLE CLAMP-MTC100 SERIES CONDUCTIVE BLACK FINISH
	CHECKED	JS		
	APPROVED	J.P.	11/22/91	
	APPROVED			
				SIZE C
				CODE IDENT NO. 06090
				DWG. NO. MTC100-YHI-011
				WEIGHT
				SHEET 1 OF 1

DO NOT SCALE THIS DRAWING