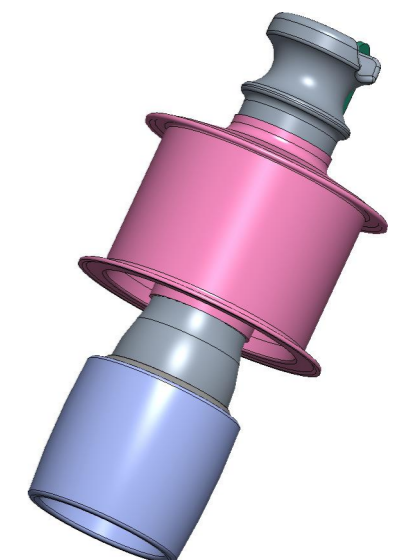
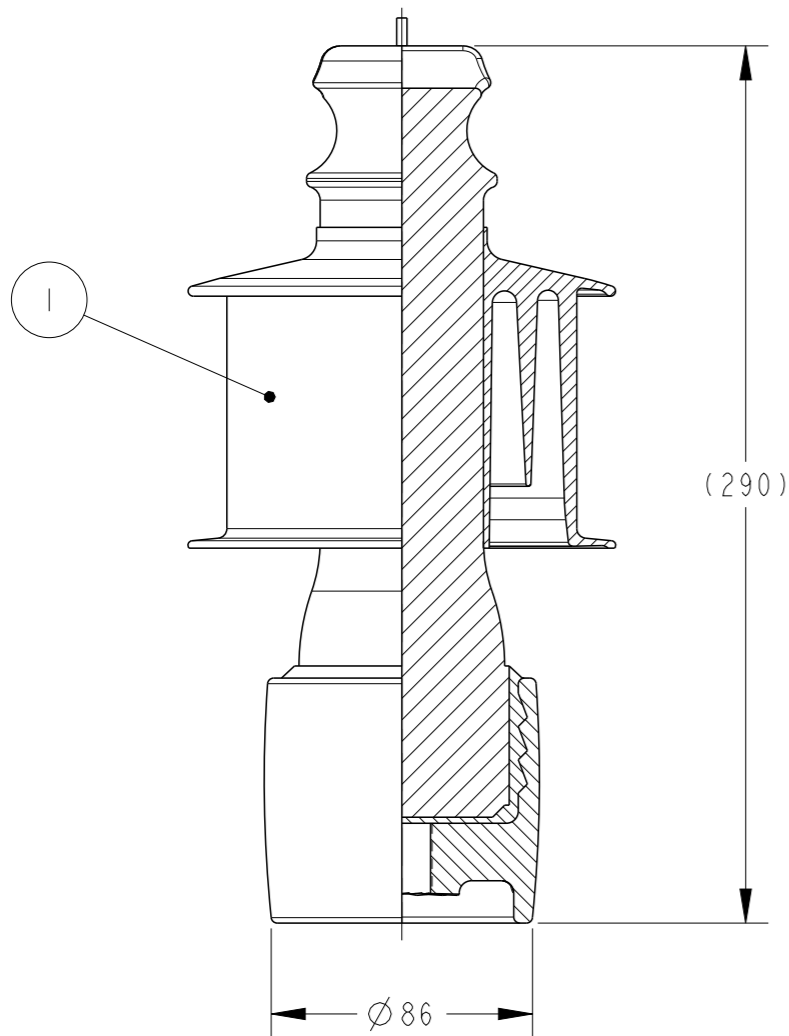


P	LTR	DESCRIPTION	DATE	DWN	APVD
	A	INITIAL RELEASE	08APR2021	MR	KP

NOTES:

ELECTRICAL PROPERTIES		UNITS	ANSI	IEC
Rated Voltage	U	kV	15	
Nominal Voltage	Vn	kV		
Impulse Withstand	BIL	kVp		125
Impulse Flashover		kVp	145	
P.F. Flashover-Dry		kV	92	
P.F. Flashover-Wet		kV	72	
P.F. Withstand-Wet		kV		55
Radio Interference at 1000kHz		micro V	15	
			10	
PHYSICAL PROPERTIES				
Nominal Creepage (A-B)		mm	540	540
Nominal Protected Creepage		mm	305	305
Nominal Dry Arcing Distance		mm	210	
Net Weight		kg	3.5	3.5
MECHANICAL PROPERTIES				
Cantilever Strength		kN	12.5	12.5
MATERIALS				
Core		Porcelain Gray		
Sheds		Silicone Rubber Gray		
End Fittings		Galvanized Cast Iron		

Ref. Standards: ANSI C29.7 & IEC 60383



ITEM	PART NUMBER	DESCRIPTION	QTY
I	CA2655-000	DUL-5472AX	I

PART NO.
1599906-5

THIS DRAWING IS A CONTROLLED DOCUMENT.		DWN M. RAJ 08APR2021			
DIMENSIONS: mm		CHK K. PUSTHAY 08APR2021			
		APVD K. PUSTHAY 08APR2021			
TOLERANCES UNLESS OTHERWISE SPECIFIED:		PRODUCT SPEC	NAME HSHI-RAYBOWL-DBELL-15KV		
0 PLC ± 1 PLC ± 2 PLC ± 3 PLC ± 4 PLC ± ANGLES ±		APPLICATION SPEC	SIZE A3	CAGE CODE 00779	DRAWING NO G-INS1897
MATERIAL N/A		FINISH N/A	WEIGHT	RESTRICTED TO	-
CUSTOMER DRAWING			SCALE NTS	SHEET 1 OF 1	REV A