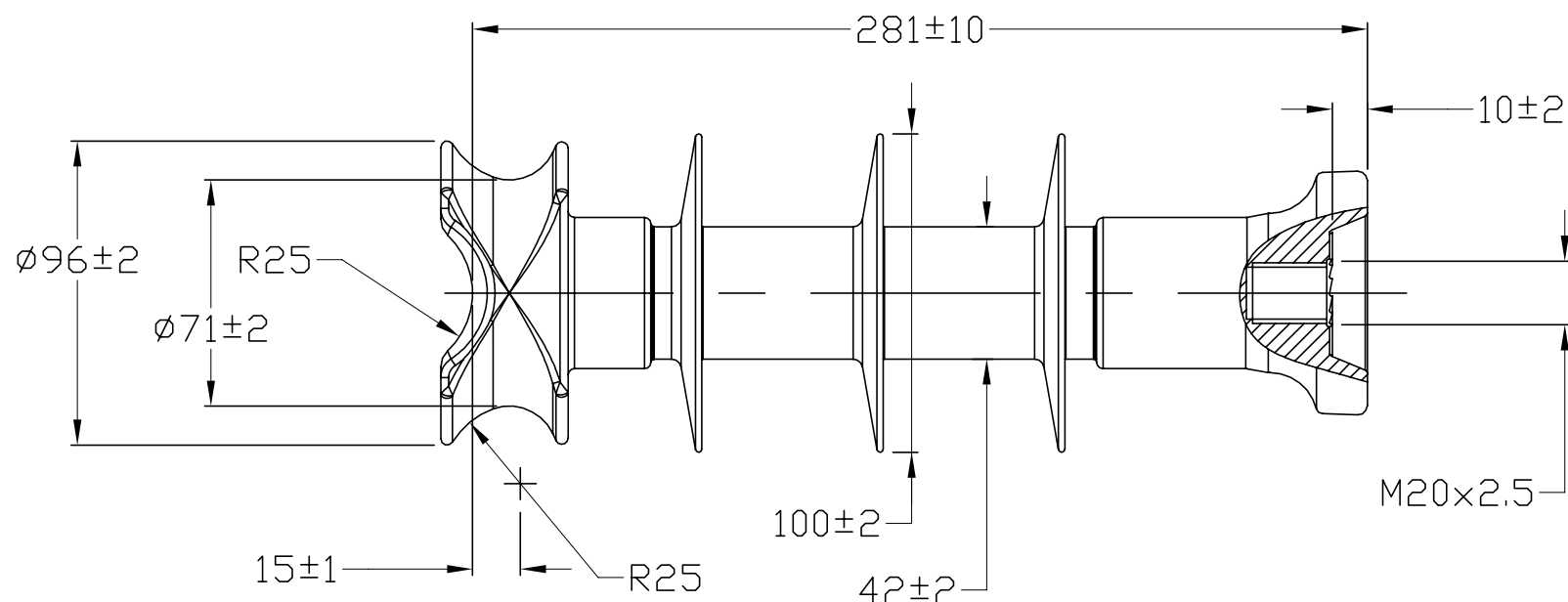


REVISIONS					
P	LTR	DESCRIPTION	DATE	DWN	APVD
A		ORIGINAL ISSUE	01SEP2020	RS	KP



PHYSICAL PROPERTIES:

- 1. MINIMUM CREEPAGE DISTANCE : 295 mm
- 2. NOMINAL DRY ARCING DISTANCE : 170 mm

ELECTRICAL PROPERTIES:

- 1. DRY AC WITHSTAND VOLTAGE : 75 kV
- 2. WET AC WITHSTAND VOLTAGE : 55 kV
- 3. LIGHTNING IMPULSE WITHSTAND VOLTAGE : 125 kV

MECHANICAL PROPERTIES:

- 1. SPECIFIED CANTILEVER LOAD (SCL) : 13 kN
- 2. SPECIFIED TENSILE LOAD (STL) : 25 kN

MATERIALS:

- 1. CORE : ECR FIBERGLASS REINFORCED POLYMER
- 2. HOUSING : SILICONE RUBBER
- 3. END FITTINGS : HOT DIP GALVANISED STEEL
- 4. STANDARDS : IEC 61109 & IEC 61952

PRODUCT MARKINGS:

- 1. TE LOGO
- 2. DATE DIAL
- 3. SCL XX kN
- 4. BATCH NO #

EP4973-000
PART NO.

NOTES:

- UNSPECIFIED TOLERANCE
- 1) $\pm(0.04 \times d + 0.06)$ inches WHEN $d \leq 11.8$ inches
- 2) $\pm(0.025 \times d + 0.23)$ inches WHEN $d > 11.8$ inches WITH MAX. TOLERANCE OF ± 2 inches

THIS DRAWING IS A CONTROLLED DOCUMENT.		DWN	R.VI.S	01SEP2020	TE Connectivity NAME CLP-13-FM20-125-295-M							
DIMENSIONS: mm		CHK	A.MIT.S	01SEP2020				APVD				
		TOLERANCES UNLESS OTHERWISE SPECIFIED:						K.PUSTHAY				
MATERIAL		SEE NOTES			PRODUCT SPEC			SIZE	CAGE CODE	DRAWING NO	RESTRICTED TO	
FINISH		-			APPLICATION SPEC			---	---	---	---	
MATERIAL		-			WEIGHT			APPROX. 2.9 kg	A3	00779	©=INS1824	---
CUSTOMER DRAWING		-			SCALE			NTS	SHEET	1 OF 1	REV	A