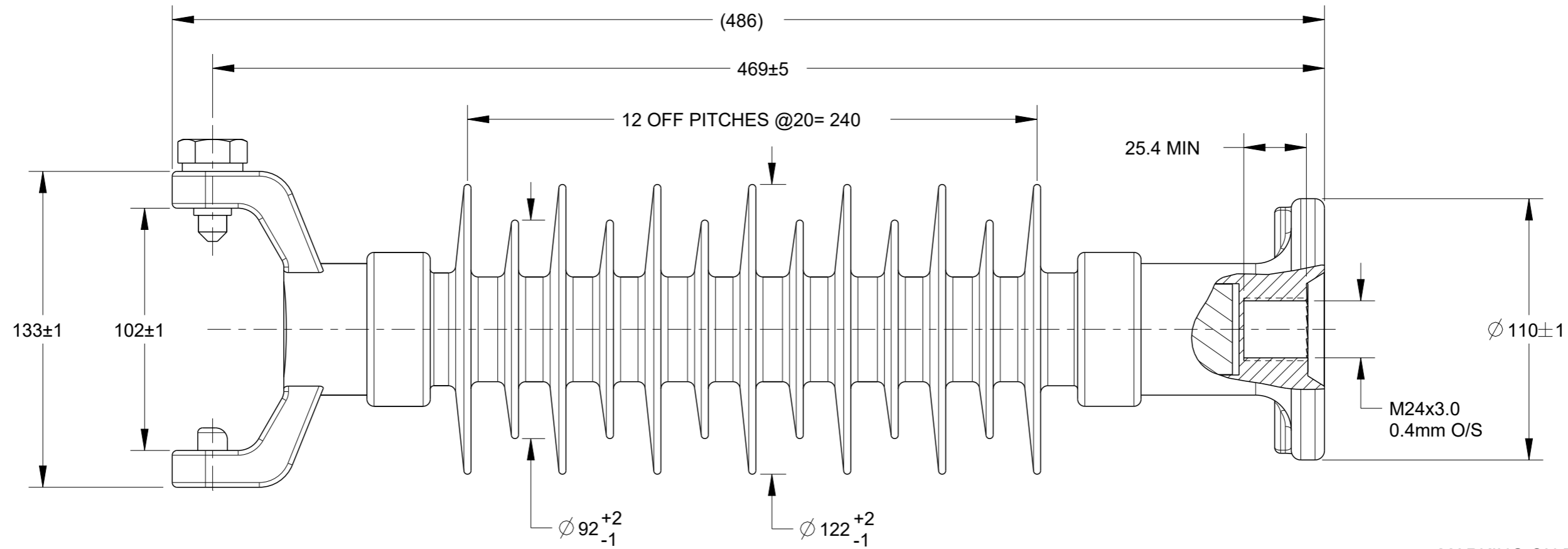


P	LTR	DESCRIPTION	DATE	DWN	APVD
3		REDRAWN PER ECO-21-004049	13OCT2020	MR	KP



**ELECTRICAL PROPERTIES :**

DRY AC FLASHOVER : 176 kV  
 WET AC FLASHOVER : 129 kV  
 DRY AC WITHSTAND : 159 kV  
 WET AC WITHSTAND : 112 kV  
 IMPULSE WITHSTAND VOLTAGE : 244 kV

**MECHANICAL PROPERTIES :**

SCL : 12.5 kN/4.975 kNm  
 MDCL : 5.5 kN/2.189 kNm  
 STL : 25 kN  
 SML : NONE

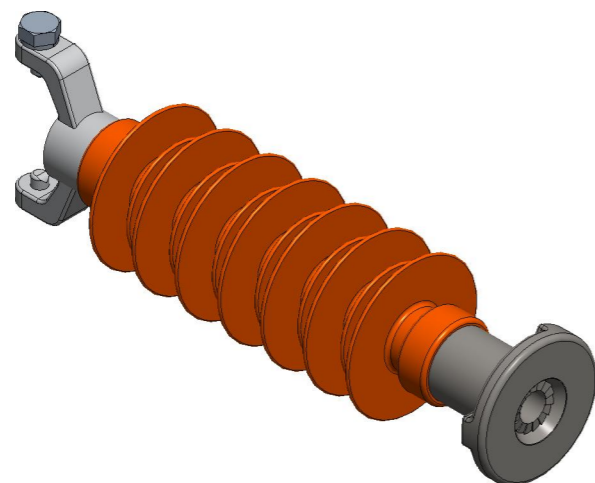
**PHYSICAL PROPERTIES :**

NOMINAL CREEPAGE : 1074 MM  
 NOMINAL DRY ARC : 340 MM  
 END FITTING DESIGN : STANDARD ANSI 29.7 & IEC60720 DESIGN

**MATERIAL :**

END FITTING : STEEL GALVANISED  
 HOUSING : RAYCHEM HV RED (EVA)  
 CORE : RBGF

**MARKING ON ENDFITTING**  
 1. INS0942  
 2. MDCL : 5.5kN  
 3. RYC



CL7574-000  
 PART NO.

THIS DRAWING IS A CONTROLLED DOCUMENT.		DWN	M.RAJ	13OCT2020		TE Connectivity			
DIMENSIONS:		CHK	K.PUSTHAY	13OCT2020		NAME			
mm		APVD	K.PUSTHAY	13OCT2020		RLP-43R-VG-M24NPG-M			
		PRODUCT SPEC		APPLICATION SPEC					
TOLERANCES UNLESS OTHERWISE SPECIFIED:		MATERIAL		FINISH	SIZE	CAGE CODE	DRAWING NO	RESTRICTED TO	
0 PLC ± 1 PLC ± 2 PLC ± 3 PLC ± 4 PLC ± ANGLES ±		SEE NOTES		N/A	A3	00779	C-INS0942	-	
CUSTOMER DRAWING		SCALE		NTS	SHEET		1 OF 1	REV	
								3	