

THIS DRAWING IS UNPUBLISHED.

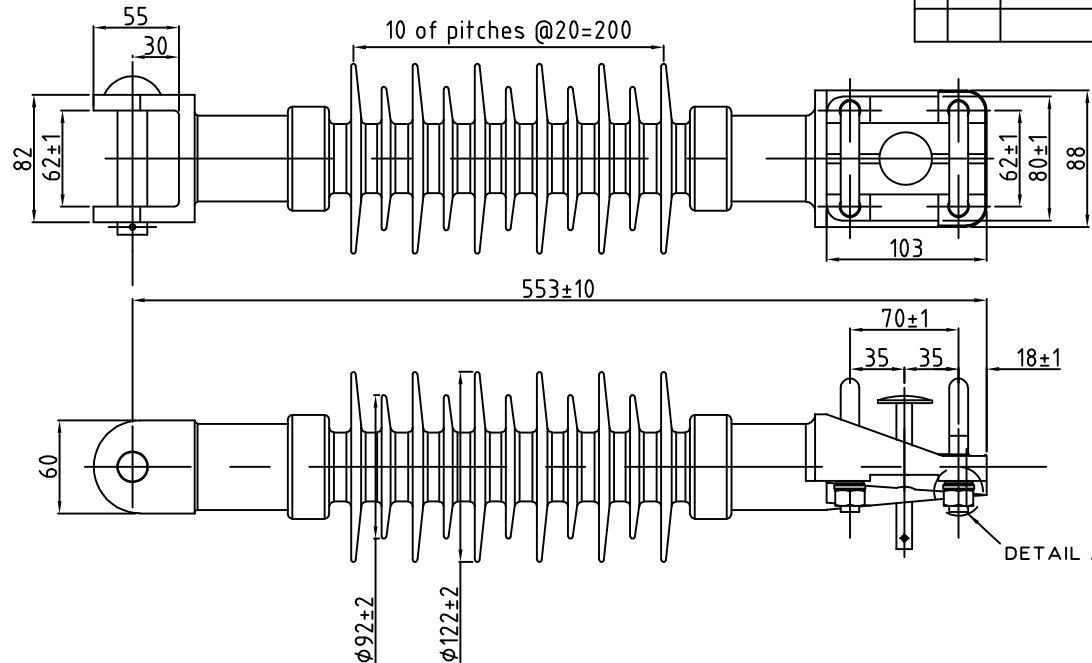
RELEASED FOR PUBLICATION

ALL RIGHTS RESERVED.

© COPYRIGHT - TE Connectivity

REVISIONS

P	LTR	DESCRIPTION	DATE	DWN	APVD
8		DESIGN MODIFIED	01/19	GR	PK



ELECTRICAL PROPERTIES:

DRY AC FLASHOVER : 128 kV
 WET AC FLASHOVER : 100 kV
 DRY AC WITHSTAND : 102 kV
 WET AC WITHSTAND : 80 kV
 IMPULSE WITHSTAND VOLTAGE : 199 kV

MECHANICAL PROPERTIES:

SCL : 8.1kN
 MDCL : 1.13 kN
 STL : 70 kN

PHYSICAL PROPERTIES:

NOMINAL CREEPAGE : 880 MM
 NOMINAL ARCING DISTANCE : 270 MM
 END FITTING DESIGN : CUSTOMER REQUEST

PRODUCT MARKING:

1. TE LOGO
2. YEAR & MONTH
3. INS0391
4. ED6534B1/2
5. MDCL 1.13kN

MATERIAL

1. END FITTING : CAST DUCTILE IRON GALVANIZED
2. HOUSING : RAYCHEM HV RED (EVA)
3. CORE : ECR GLASS
4. U-BOLTS : GALVANIZED STEEL
5. CLEVIS PIN : STEEL SAE 1038

THIS DRAWING IS A CONTROLLED DOCUMENT.

DWN 23/11/2019

CHK GHANSHYAM RANA

23/11/2019

RAJESH

APVD 23/11/2019

P KIRUSHNARAJ

PRODUCT SPEC

APPLICATION SPEC

WEIGHT ---

CUSTOMER DRAWING



NAME: RRA-25R-CUG-HP
 176840-000

SIZE: A3
 CAGE CODE: 00779
 DRAWING NO: C=INS0391
 RESTRICTED TO: ---

SCALE: 1:1
 SHEET: 1 OF 1
 REV: 8

DIMENSIONS: mm

TOLERANCES UNLESS OTHERWISE SPECIFIED:



0 PLC	± 1
1 PLC	± 0.1
2 PLC	± 0.01
3 PLC	± 0.001
4 PLC	± 0.0001
ANGLES	± 1

MATERIAL

FINISH