



723 htec Receptacle

speedtec

**7+3-pin
insulation insert Code 1 (socket)
Earth-to-Housing Connection according to VDE 0627
Protection Against Contact according to VDE 0623
Electrically Protective Separation according to VDE 0140
flange mount / Flange 25x25**

Technical Data

number of pins	10
power	7 (6+PE)
signal	3
temperature range	-20 °C to 130 °C
protection type	when connected IP 66/67

Electrical Data

	power	signal
rated current	max. 25 A*	max. 1.2 A*
rated voltage	850V/DC 630V/AC 50 V (DC)	
rated insulation voltage (L-L)	6000 V	1500 V

mating cycles	500
---------------	-----

Data according to VDE 0110/EN61984, Paragraph 6.19.2.2

pollution degree	3
over voltage category	III
max. height for operation	2000 m

Material

housing	zinc diecast / chromated
insulation insert	PA 6.6 mod., UL 94/V0
seals	FKM

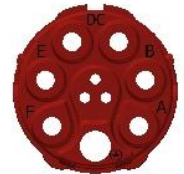
Contacts (not part of product contents)

Tools (not part of product contents)

**H 53 C 204 NN 00 00 0200 000
H E C 204 N 00 00 0200 000**



Contact Arrangement
mating view

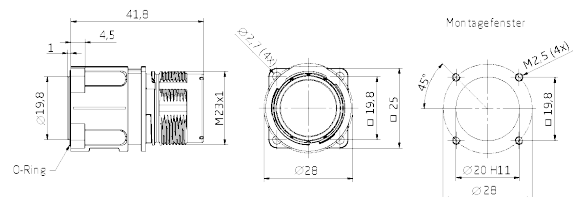


© 2018 TE Connectivity

TE Connectivity, TE connectivity (logo), intercontec (logo) and speedtec are trademarks.

While TE Connectivity (TE) has made every reasonable effort to ensure the accuracy of the information in this presentation, TE does not guarantee that it is error-free, nor does TE make any other representation, warranty or guarantee that the information is accurate, correct, reliable or current. TE reserves the right to make any adjustments to the information contained herein at any time without notice. TE expressly disclaims all implied warranties regarding the information contained herein, including, but not limited to, any implied warranties of merchantability or fitness for a particular purpose. The dimensions in this article are for reference purposes only and are subject to change without notice. Specifications are subject to change without notice. Consult TE for the latest dimensions and design specifications.

TE Connectivity Industrial GmbH
Bernrieder Straße 15
94559 Niederwinkling, Deutschland
Tel.: +49 9962 2002-0
Fax: +49 9962 2002-70
E-Mail: intercontec@te.com
Web: www.intercontec.biz



Main Dimensions
Receptacle

*for max. wire cross-section
pay attention to the
cross-section of used contacts