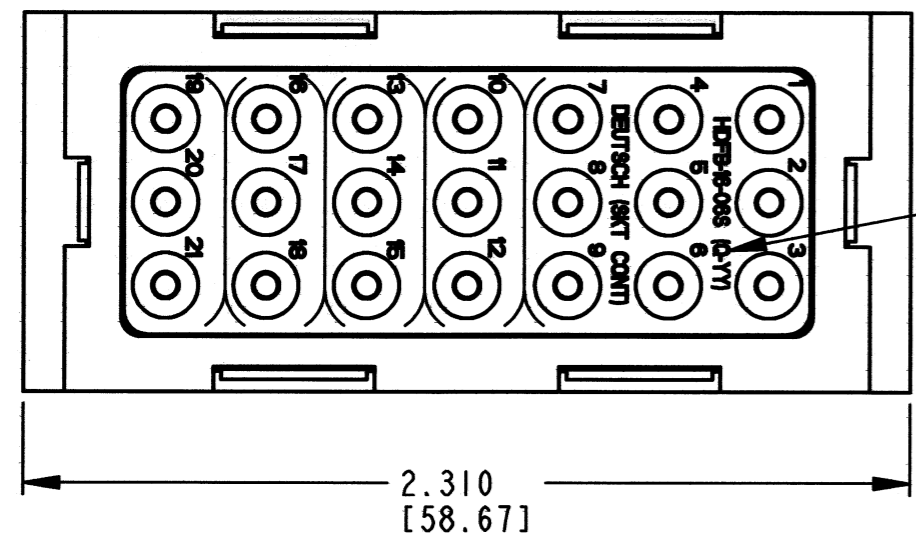
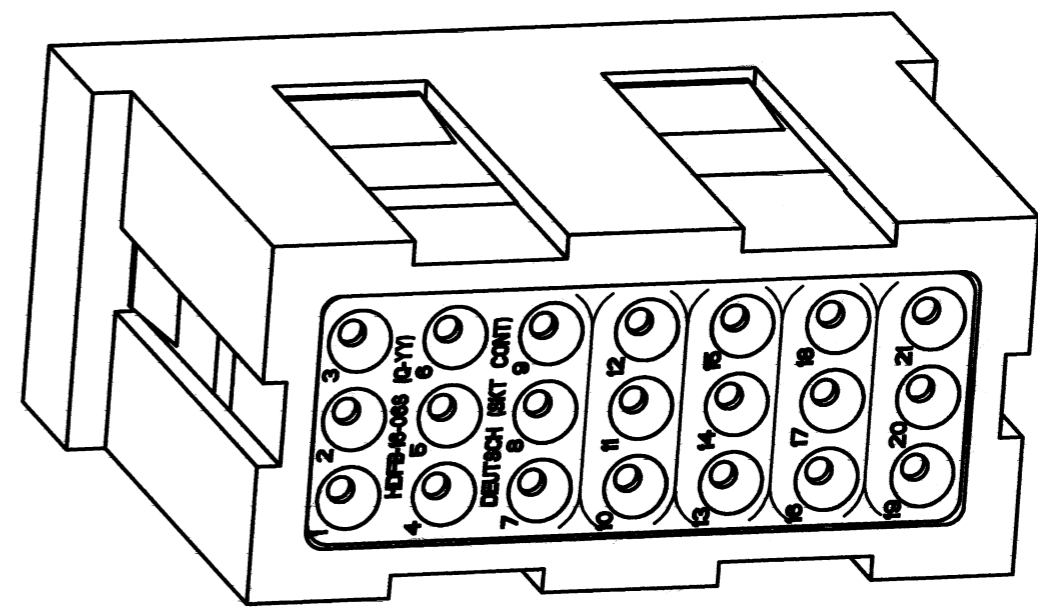
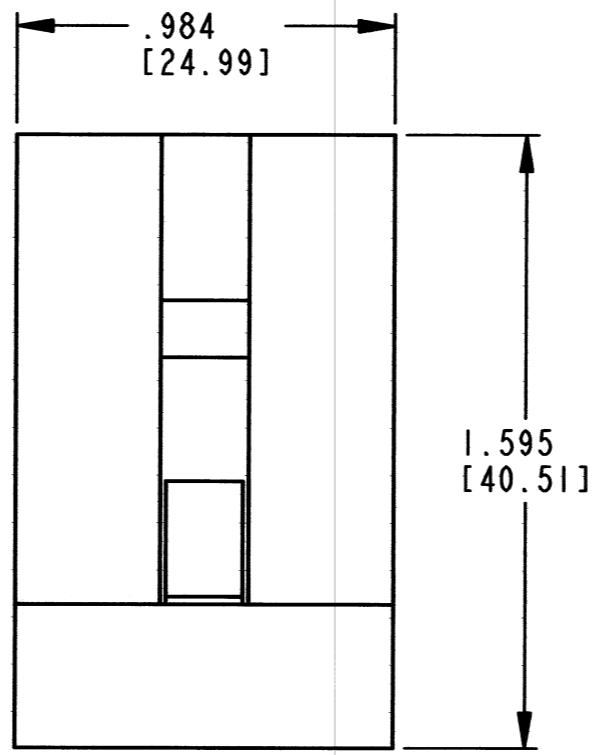
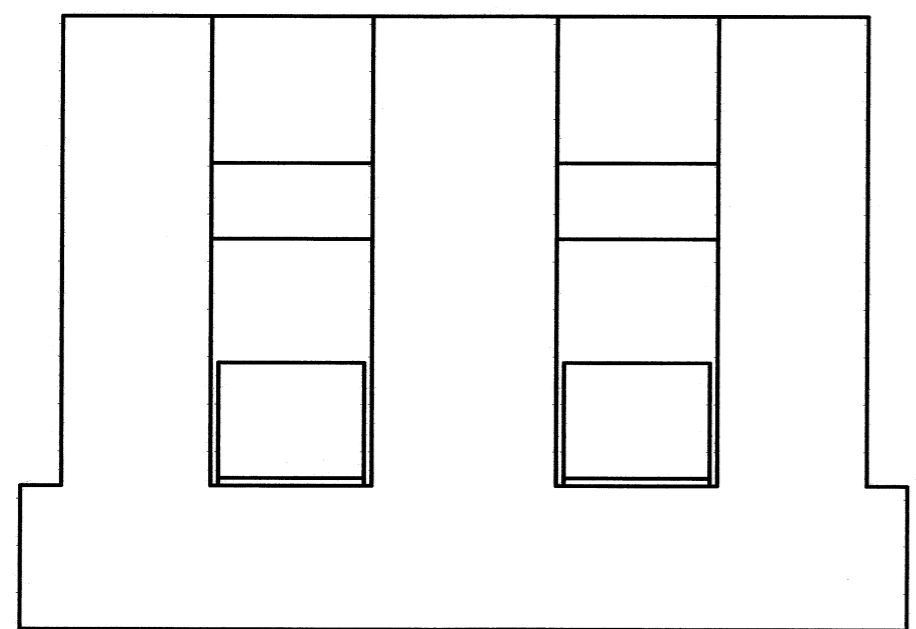


REV
A
HDFB-16-06S

REVISIONS			
SYM	DESCRIPTION	DATE	APPROVED
NC	NEW RELEASE PER E.O. P16103	6/11/99	RDR
A	REVISED PER E.O. P21331	5-1-12	RDR



DATECODE:
Q = YEAR QUARTER
YY = LAST TWO DIGITS OF YEAR



- 6. USE MOUNTING BRACKET 0427-202-0290 (2 MODULES) OR 0427-201-0390 (3 MODULES).
- 5. USE SIZE 16 CONTACT REMOVAL TOOL NO. 0411-204-1605.
- 4. USE SIZE 16 SOCKET CONTACT NO. 0462-201-16141
- 3. FOR CONTACT AND WIRE SPECIFICATION INFORMATION SEE ENVELOPE DRAWING 0425-015-0000. CONSULT FACTORY FOR MODIFICATIONS.
- 2. ALL DIMENSIONS ARE $\pm .025$ [0.63] UNLESS OTHERWISE SPECIFIED.

NOTES: 1. ALL DIMENSIONS ARE IN INCHES [MILLIMETERS].

CONTACT SIZE	MIN. INSUL O.D.	MAX. INSUL O.D.	WIRE RANGE [mm ²]
16	.100 [2.54]	.134 [3.40]	14-20 AWG [2.0-0.5]

SIGNATURE & DATE	
DR	D. SPENCER 18MAY99
CHK	<i>[Signature]</i> 4/30/2012
PE	<i>[Signature]</i> 3/28/12
APPD	<i>[Signature]</i> 9/27/12
SCALE	2:1 WT

**FEED BACK MODULE
REAR INSERTION/REMOVAL
HD SERIES**

ENVELOPE

EP	MATL. CODE
 3850 INDUSTRIAL AVE. HEMET, CA 92545	
B	HDFB-16-06S
DWG SIZE	CODE 11139 SHEET OF