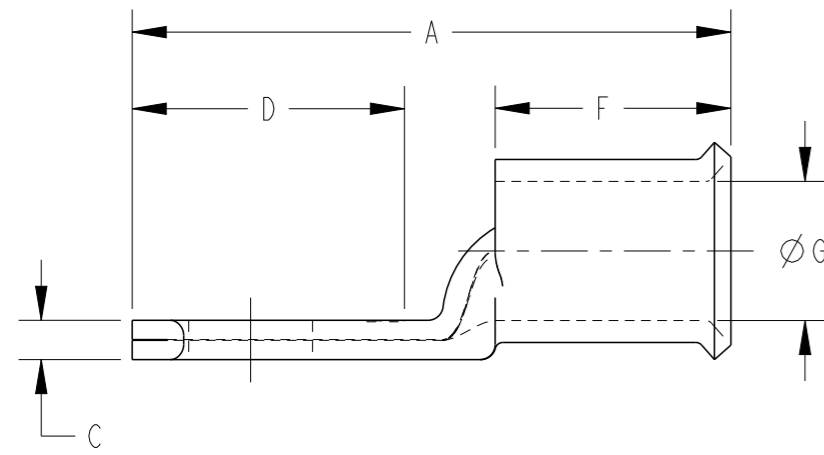
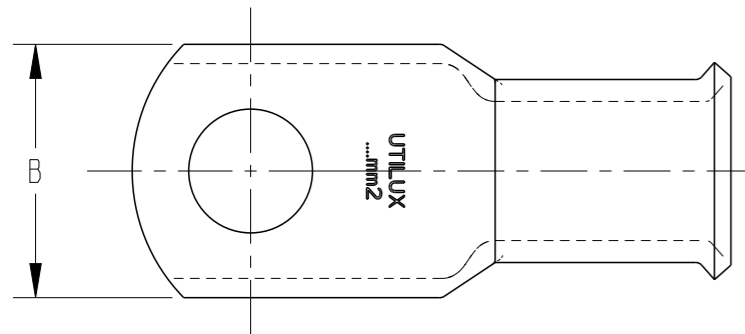


P	LTR	DESCRIPTION	DATE	DWN	APVD
	A	INITIAL RELEASE	03DEC2020	RS	MF

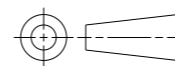


PRODUCT SELECTION INFORMATION

TCPN	CATALOGUE NUMBER	COND. AREA (mm ²)	CONDUCTOR STRANDING	STUD SIZE	DIMENSION (mm)						CRIMPING DIE
					A	B	C	D	F	G	
142712-000	CG16FLM10	16	7/1.70	M10	41	14	2	19	20	5.5	38-63CU
934420-000	CG16FLM8	16	7/1.70	M8	39	14	2	16	20	5.5	38-63CU
261132-000	CG25FLM10	25	209/0.40	M10	43	18	2	19	22	7.1	38-77CU
661380-000	CG25FLM8	25	209/0.40	M8	43	17	2	19	22	7.1	38-77CU
535550-000	CG35FLM10	35	285/0.40	M10	43	18	3	19	22	8.4	38-92CU
ED6733-000	CG35FLM12	35	285/0.40	M12	43	20	2	19	22	8.4	38-92CU
923458-000	CG35FLM6	35	285/0.40	M6	43	18	3	19	22	8.4	38-92CU
749310-000	CG35FLM8	35	285/0.40	M8	43	18	3	19	22	8.4	38-92CU
401166-000	CG50FLM10	50	380/0.40	M10	50	21	3	27	21	9.4	38-104CU
ED6734-000	CG50FLM6	50	380/0.40	M6	50	21	3	27	21	9.4	38-104CU
583622-000	CG50FLM8	50	380/0.40	M8	50	21	3	27	21	9.4	38-104CU
064194-000	CG70FLM10	70	203/0.67	M10	54	21	3	27	22	11	38-115CU
976158-000	CG70FLM12	70	203/0.67	M12	54	21	3	27	22	11	38-115CU
593196-000	CG70FLM8	70	203/0.67	M8	54	21	3	27	22	11	38-115CU
035220-000	CG95FLM10	95	259/0.67	M10	58	25	4	27	27	13.4	38-142CU
883122-000	CG95FLM12	95	259/0.67	M12	58	25	4	27	27	13.4	38-142CU
154574-000	CG185FLM12	185	518/0.67	M12	80	37	5	41	30	18.4	38-200CU
EA2602-000	CG300FLM12	300	854/0.67	M12	109	46	7.9	42	42	23.8	38-260CU
ED6737-000	CG300FLMB	300	854/0.67	Nil	109	46	7.9	42	42	23.8	38-260CU

THIS DRAWING IS A CONTROLLED DOCUMENT.

DIMENSIONS:
mm



TOLERANCES UNLESS OTHERWISE SPECIFIED:

0 PLC	±-
1 PLC	±-
2 PLC	±-
3 PLC	±-
4 PLC	±-
ANGLES	±-

MATERIAL

FINISH

DWN RAVI.S 03DEC2020

CHK S.CHAD 03DEC2020

APVD M.FRATER 03DEC2020

PRODUCT SPEC

APPLICATION SPEC

WEIGHT

CUSTOMER DRAWING

STE TE Connectivity

NAME FLARED COPPER CRIMP LUGS

SIZE	CAGE CODE	DRAWING NO	RESTRICTED TO
A3	00779	CG-E00001141	-

SCALE NTS SHEET 1 OF 1 REV A