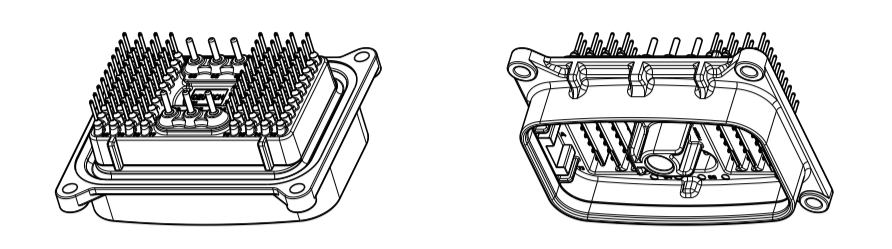
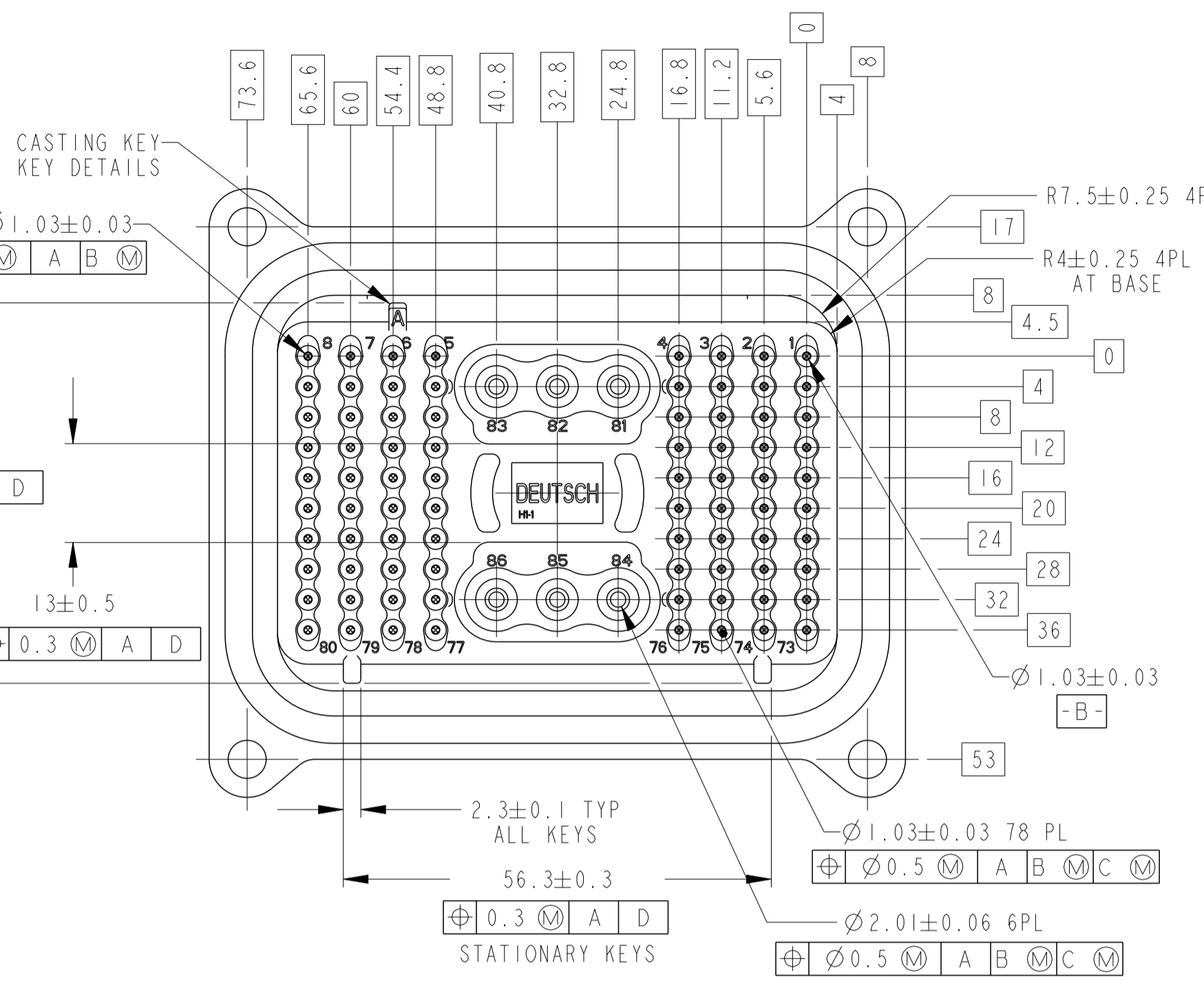
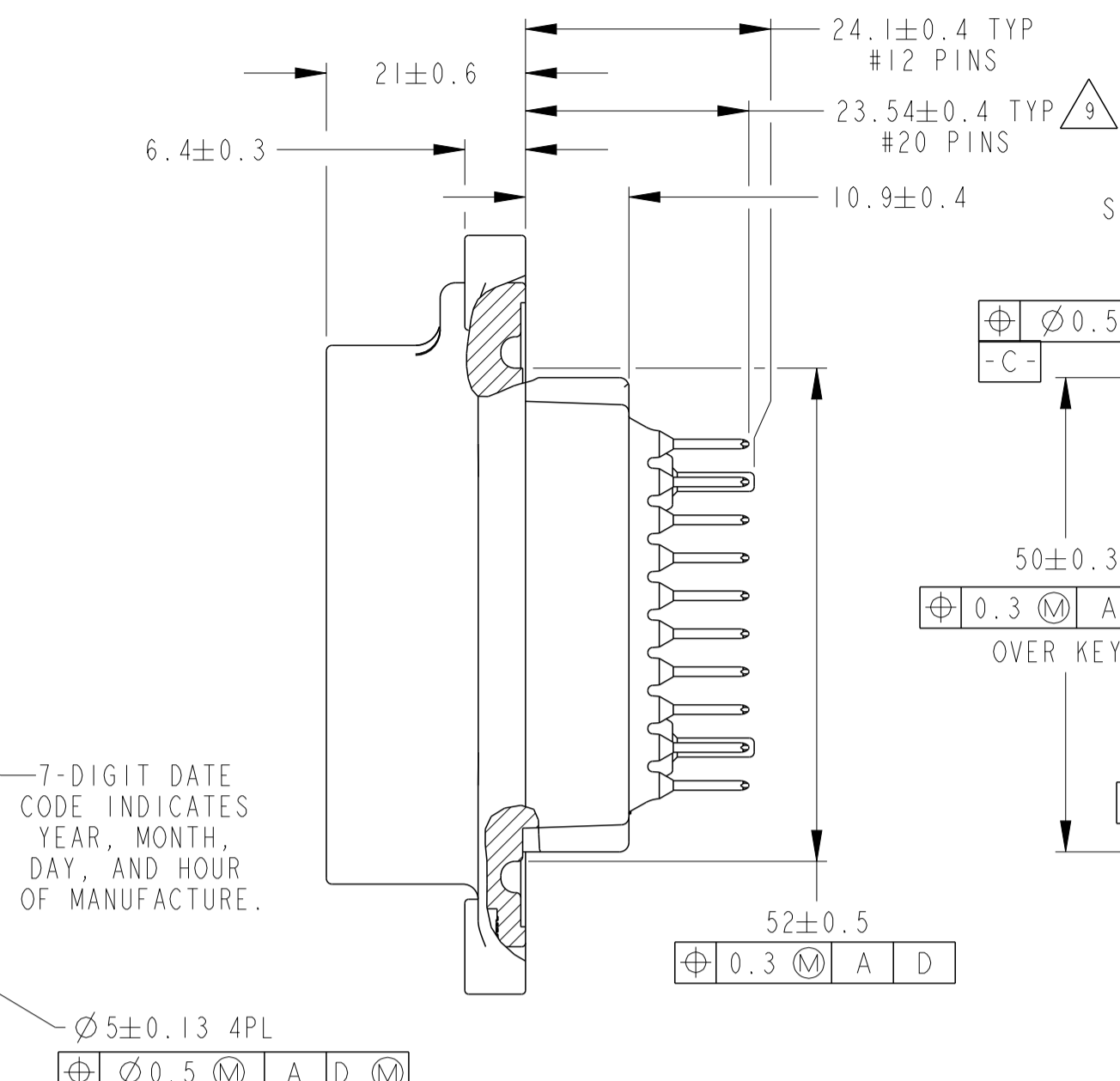
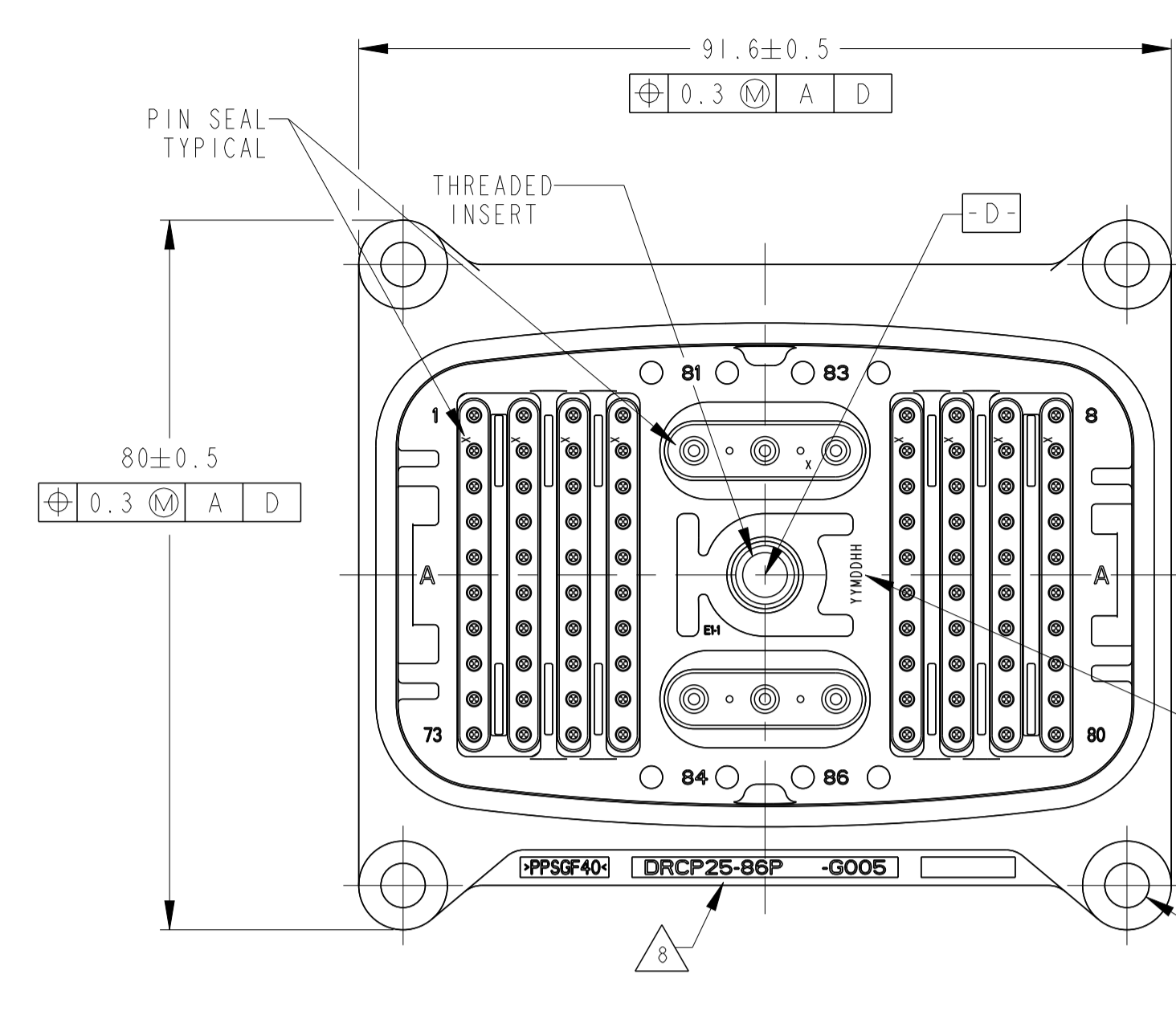
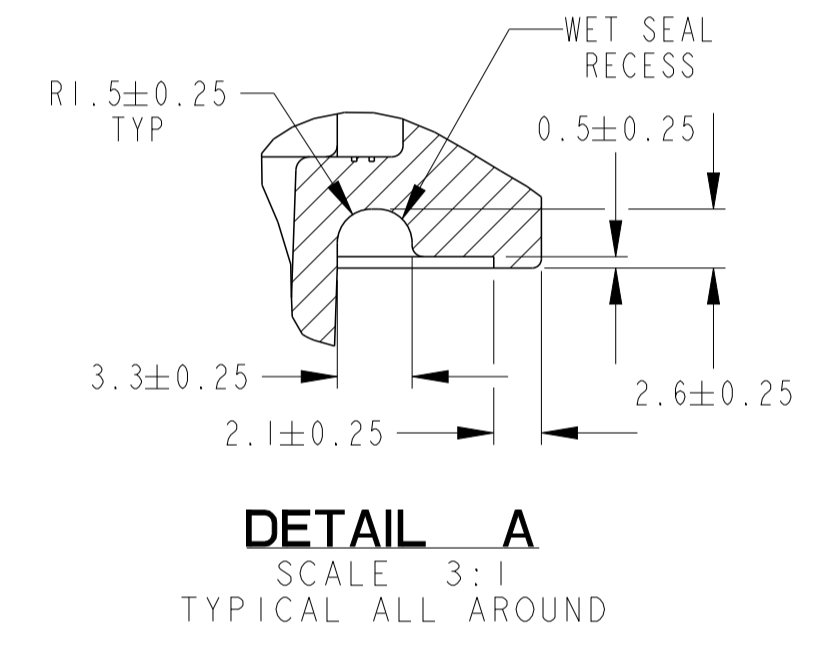
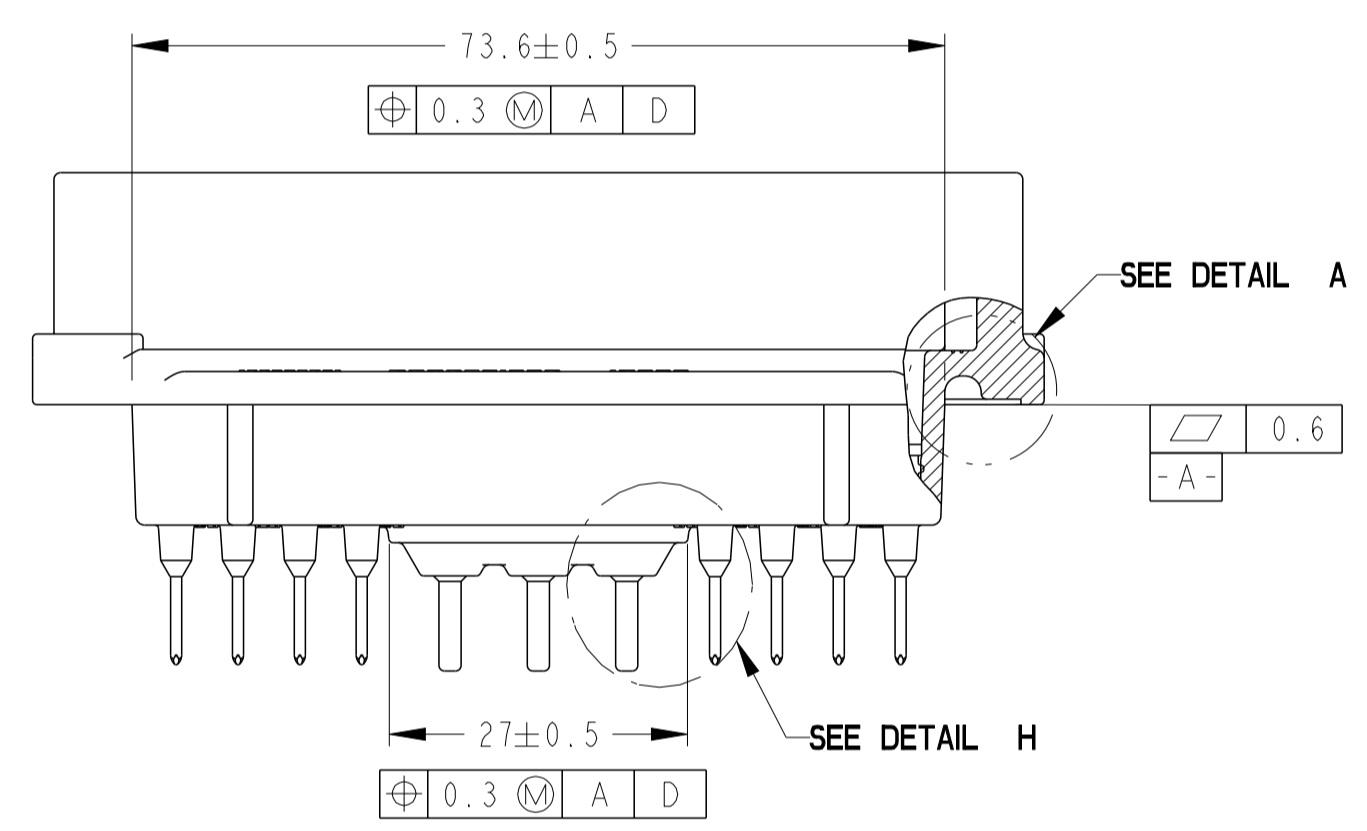
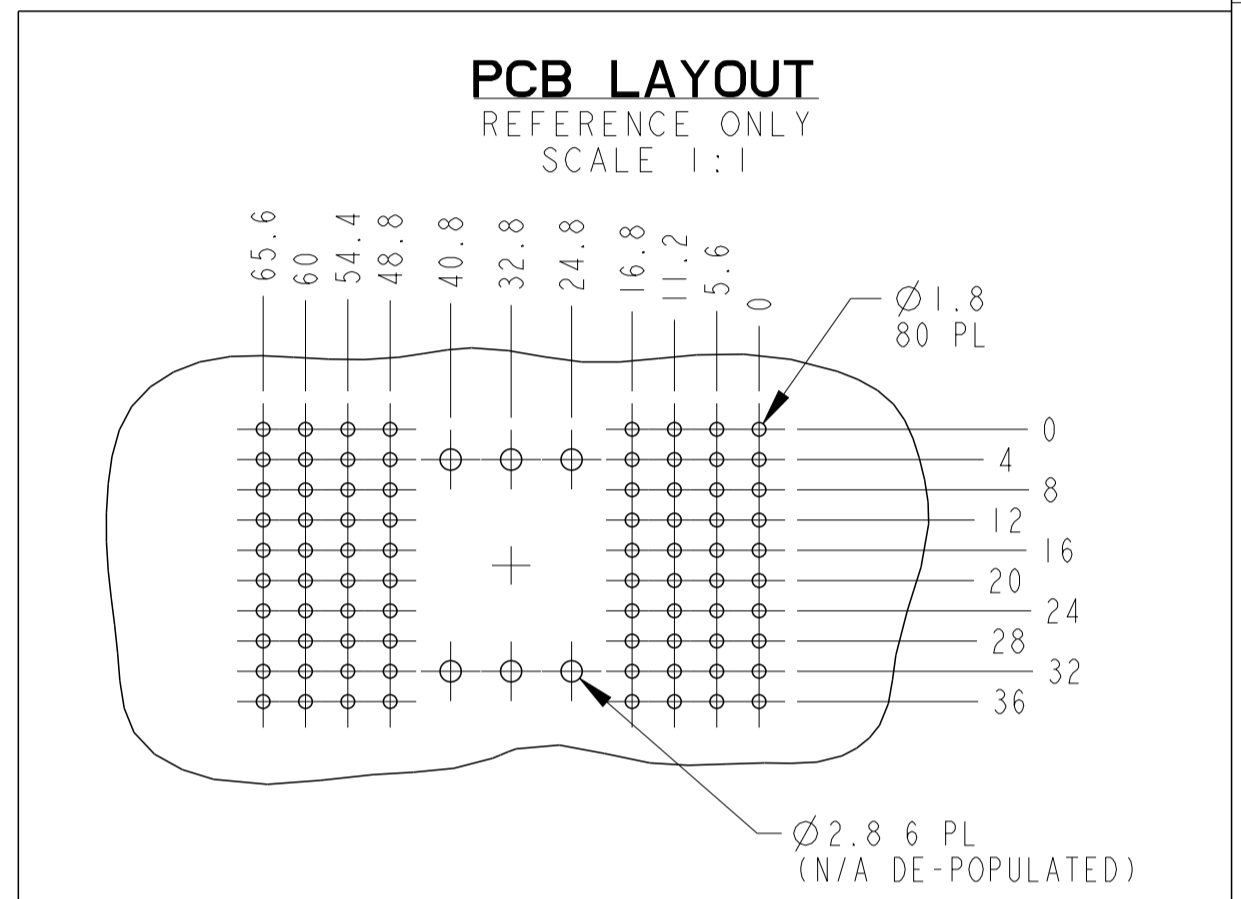


LOC	DIST	REVISIONS			
P	LTN	DESCRIPTION	DATE	OWN	APVD
F2		REVISED PER PCN E-21-001113	27JAN2021	DB	IG
F3		REVISED PER PCN E-21-113740	26AUG2021	DB	IG
F4		REVISED PER PCN E-21-135557	01APR2022	DB	IG
F5		REVISED PER PCN E-22-150555	27SEP2022	MK	IG

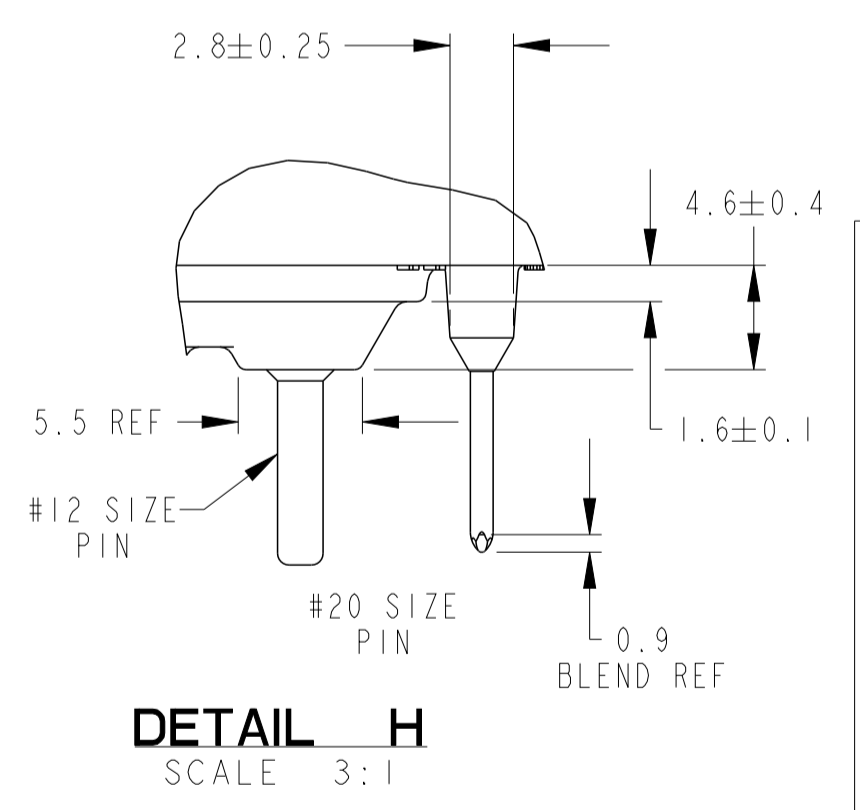


3D VIEWS

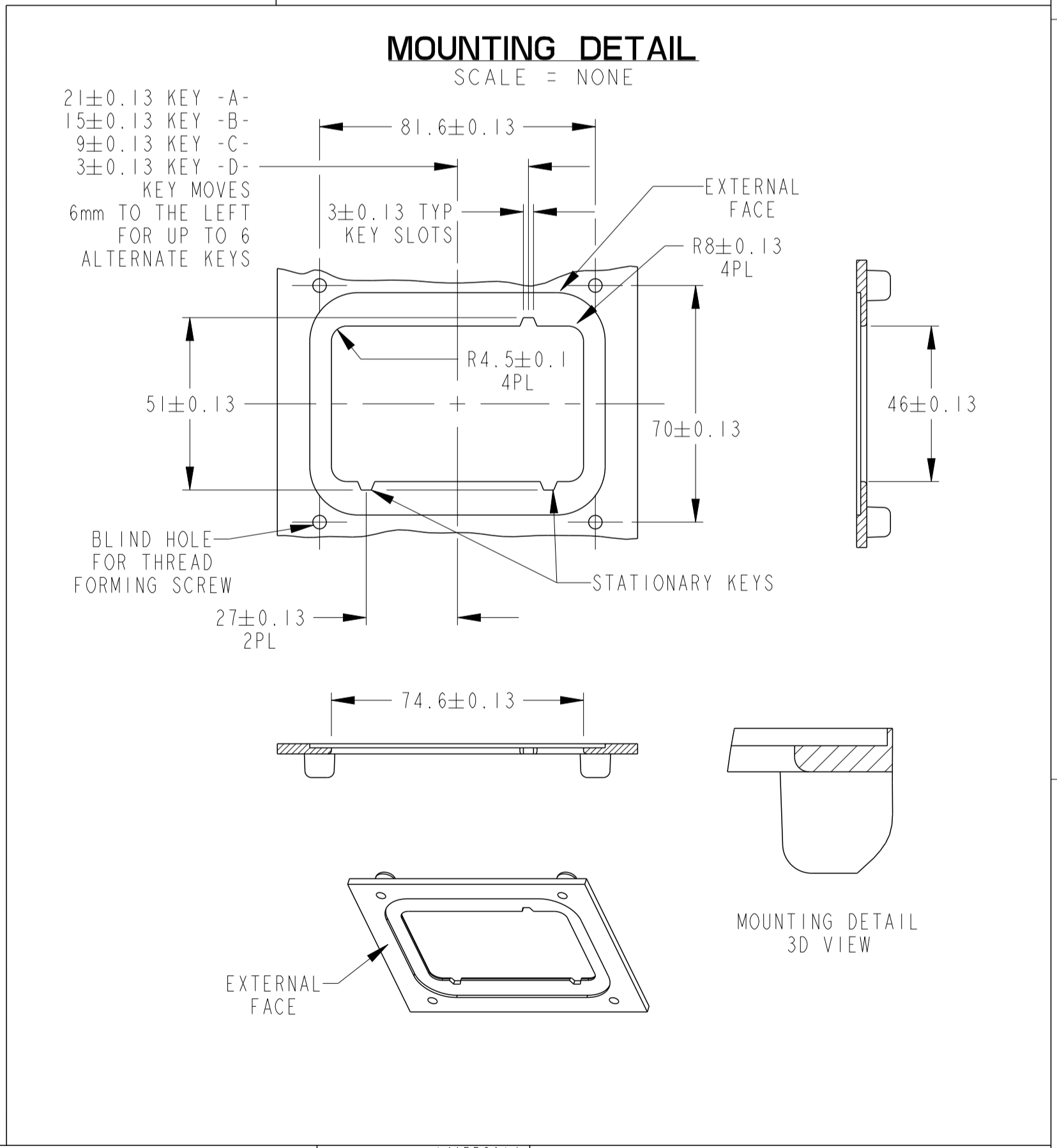
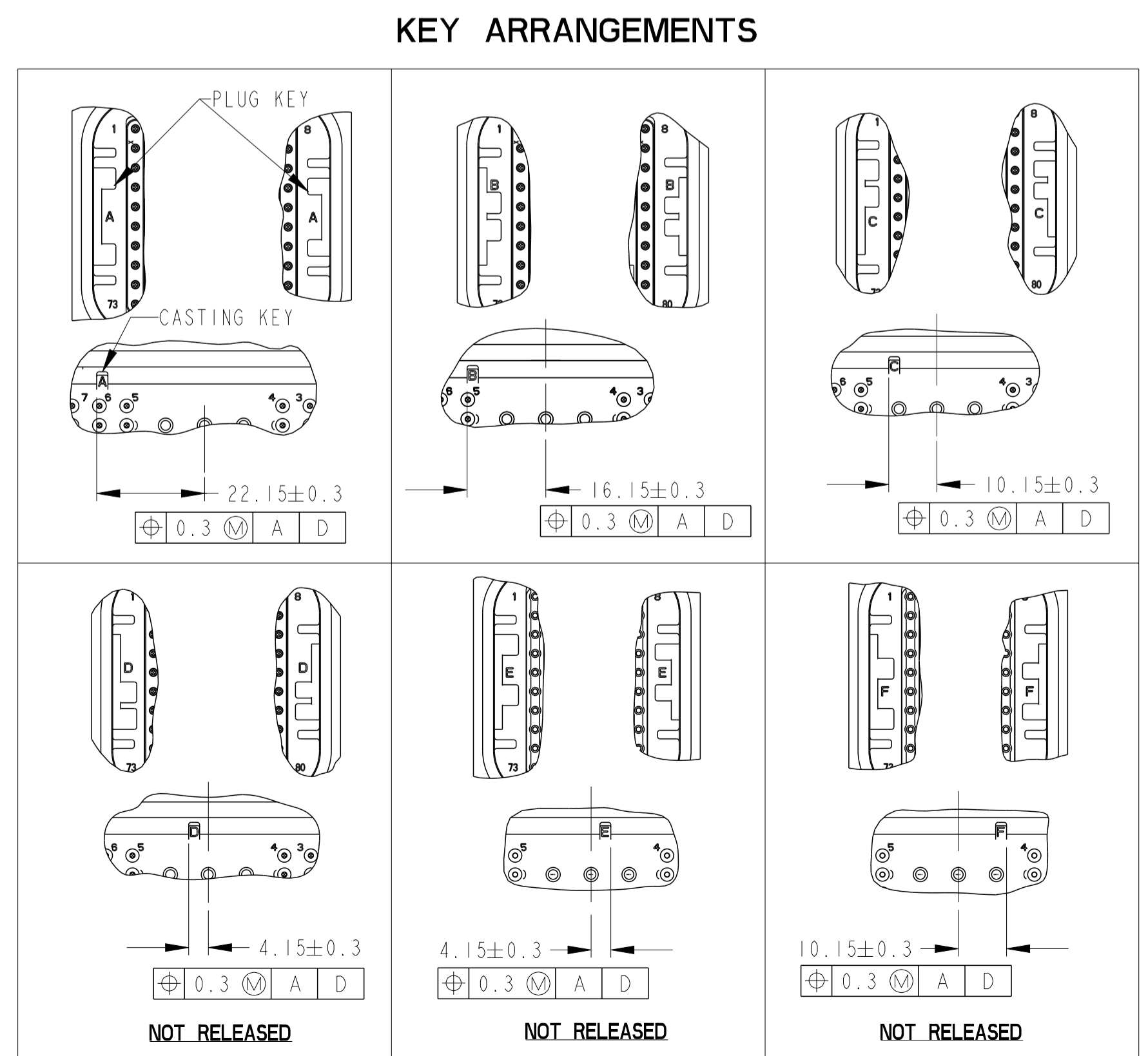


PART NUMBER SYSTEM
 DRCP25-86PAA-GXOX
PLUG KEY
CASTING KEY
SIGNAL PINS:
 3 = SELECTIVE GOLD
 5 = TIN
POWER PINS:
 0 = TIN POPULATED
 C = DEPOPULATED

RELEASED PART NUMBERS					
TCPN	ALIAS PART NUMBER	TERMINAL PLATING / DE-POPULATION SIGNAL PINS	POWER PINS	CONTACTS QUANTITY	REVISION
DRCP25-86PAA-G005	DRCP25-86PAA-G005	TIN	TIN	86	E
DRCP25-86PBB-GC05	DRCP25-86PBB-GC05	TIN	DEPOPULATED	80	E
DRCP25-86PCC-GC05	DRCP25-86PCC-GC05	TIN	DEPOPULATED	80	E
DRCP25-86PAA-G003	DRCP25-86PAA-G003	GOLD	TIN	86	E
DRCP25-86PBB-GC03	DRCP25-86PBB-GC03	GOLD	DEPOPULATED	80	E
DRCP25-86PCC-GC03	DRCP25-86PCC-GC03	GOLD	DEPOPULATED	80	E
2393993-1	DRCP25-86PBB-G005	TIN	TIN	86	A



WEIGHTS	
126.37g	WITH POWER PINS
119.74g	WITHOUT POWER PINS



- 9 KEY CHARACTERISTIC.
- 8 SEE RELEASED PART NUMBER TABLE.
- 7 PARTS TO BE FREE OF CONTAMINANTS, OILS, LUBRICANTS, PROCESSING CHEMICALS, AND RESIDUES THAT WOULD INHIBIT ADHESION. NO SLIVERS OR OTHER FOREIGN MATERIAL TO EXCEED .125mm FOR CONDUCTIVE PARTICLES AND .250mm FOR NON-CONDUCTIVE PARTICLES.
- 6 PARTS TO BE SHIPPED IN ANTISTATIC TRAYS.
- 5 CONSULT FACTORY FOR PERFORMANCE SPECIFICATIONS.
- 4 THIS PART MATES WITH DEUTSCH PART NUMBER DRCP26-86SX, DRCP28-86SX.
- 3 HOUSING TO BE WET SEALED TO MOUNTING DETAIL. WET SEAL MATERIAL AND PROCESS TO BE QUALIFIED AT THE MODULE LEVEL BY CUSTOMER. HEADER SEAL AREA IS EXPOSED TO UV LIGHT TO AID ADHESION.
- 2 MATERIALS: (RoHS COMPLIANT)
 HOUSING = PPSGF40-UV EXPOSED.
 THREADED INSERT = STAINLESS STEEL.
 PIN SEALS = SILICONE
 #20 TERMINALS COPPER ALLOY SELECTIVE PLATED PER TABLE.
 #12 TERMINALS COPPER ALLOY PLATED PER TABLE.
- 1 THREADED INSERT AND PIN CONTACTS ARE MOLDED IN.

NOTES:

THIS DRAWING IS A CONTROLLED DOCUMENT.		OWN: JAIME C. APOSTOL 14 APR 2014	TE Connectivity
DIMENSIONS: mm		CHK: PAULA CARNAHAN 06 JUN 2014	
TOLERANCES UNLESS OTHERWISE SPECIFIED:		APVD: PAULA CARNAHAN 06 JUN 2014	NAME: 86 WAY RECEPTACLE PCB MOUNT DRCP SERIES SIZE: CAGE CODE DRAWING NO: RESTRICTED TO:
0 PLC ± 1 PLC ±.64 2 PLC ±.64 3 PLC ±.64 4 PLC ±.64 ANGLES: #0°30'0"		PRODUCT SPEC: 108-151044 APPLICATION SPEC:	
MATERIAL: 2	FINISH: 2	WEIGHT: SEE TABLE	4AFU8 ©=DRCP25-86PXX-GXOX SCALE: 1:1 SHEET 1 OF 1 REV: F5