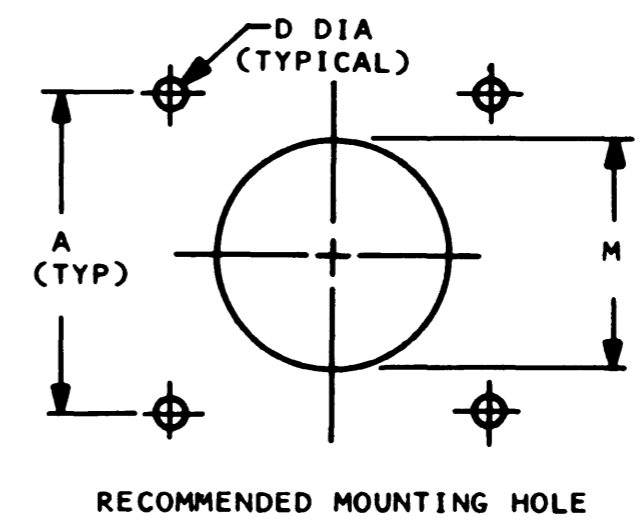
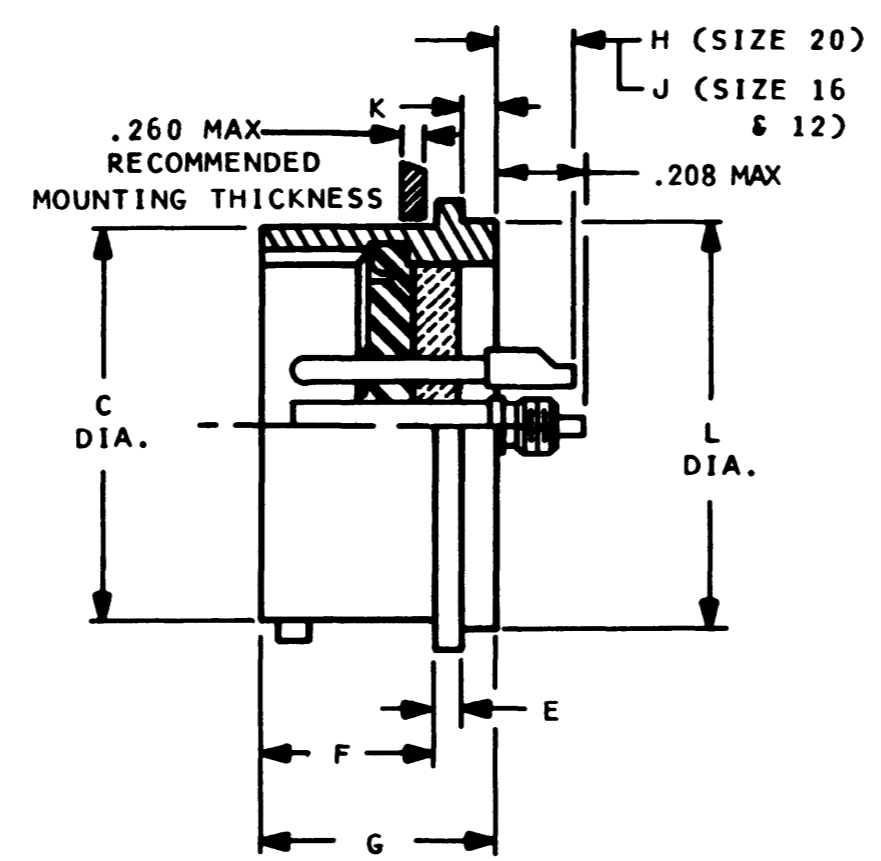
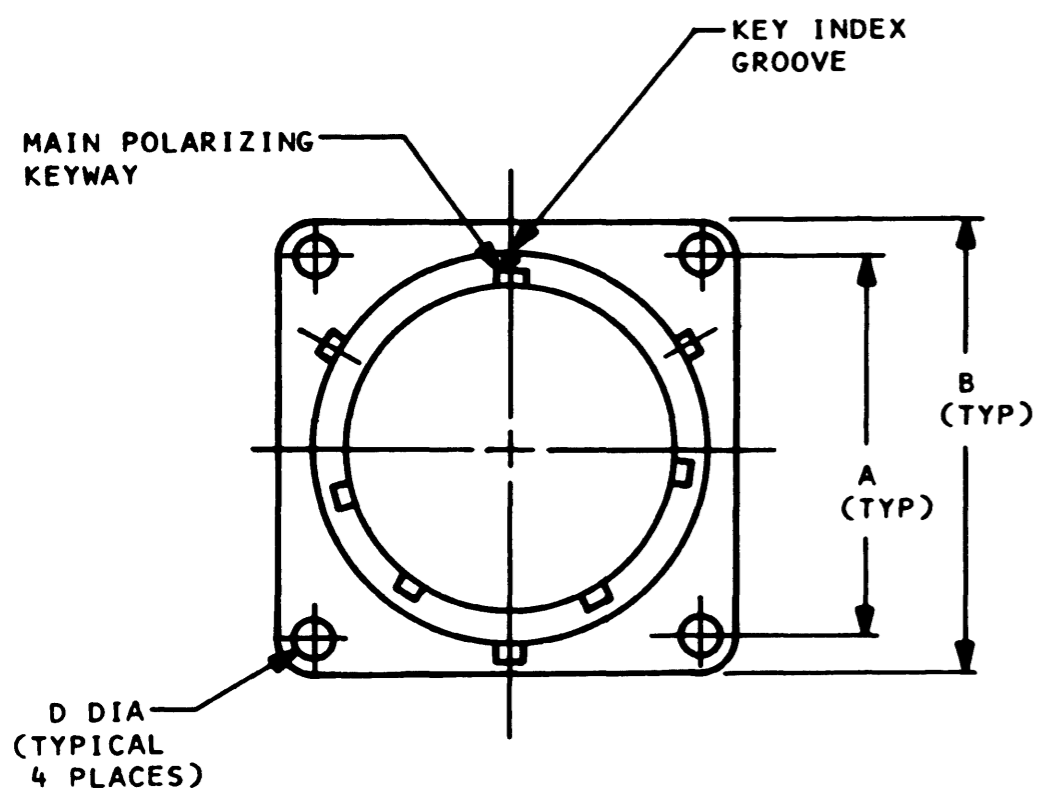


E DBA50H--*P*

REVISIONS			
SYM	DESCRIPTION	DATE	APPROVED
E	CHANGE PER E.O. 75654	11-6-72	DLL <i>[Signature]</i>



SHELL SIZE	PART NUMBER	A ± .005	B MAX	+ .001 C - .005	± .005 D	± .016 E	± .010 F	G MAX (REF)	± .030 H	± .030 J	± .010 K	+ .001 L - .005	+ .010 M - .000	APPROX. WT. IN LBS.
8	DBA50H-8-*P*	.594	.860	.473	.120	.062	.588	.801	.148	.218	.115	.562	.572	
10	DBA50H-10-*P*	.719	.954	.590	.120	.062	.588	.801	.148	.218	.115	.672	.682	
12	DBA50H-12-*P*	.812	1.047	.750	.120	.062	.588	.801	.148	.218	.115	.781	.791	
14	DBA50H-14-*P*	.906	1.141	.875	.120	.062	.588	.801	.148	.218	.115	.906	.916	
16	DBA50H-16-*P*	.969	1.234	1.000	.120	.062	.588	.801	.148	.218	.115	1.031	1.041	
18	DBA50H-18-*P*	1.062	1.328	1.125	.120	.062	.588	.801	.148	.218	.115	1.156	1.166	
20	DBA50H-20-*P*	1.156	1.453	1.250	.120	.093	.650	.863	.148	.218	.083	1.250	1.260	
22	DBA50H-22-*P*	1.250	1.578	1.375	.120	.093	.650	.895	.116	.186	.115	1.375	1.385	
24	DBA50H-24-*P*	1.375	1.703	1.500	.147	.093	.650	.895	.116	.186	.115	1.500	1.510	

4. MATERIAL:
SHELL- STAINLESS STEEL
CONTACTS, PIN-HIGH NICKEL-IRON
INSERTS- COMPRESSION GLASS
ELASTOMER
3. FINISH: SHELL-ELECTRO POLISH
CONTACTS-GOLD PLATED
2. CONTACT IDENTIFICATION IS IN CONTRASTING
COLOR TO INSERTS.
1. FOR AVAILABLE CONTACT ARRANGE-
MENTS AND ALTERNATE INSERT
POSITIONS, SEE PAGE 38500-B IN
DBA SECTION OF CATALOG.

NOTE:

SIGNATURE & DATE	
DR	LEFTWICH 7-7-69
CHK	<i>[Signature]</i> 7-8-69
PE	<i>[Signature]</i>
APPD	
SCALE NONE	WT

RECEPTACLE, CONNECTOR,
HERMETIC,
BAYONET COUPLING,
SQUARE FLANGE MOUNTING
ENVELOPE

CP	MATL. CODE
The Deutsch Company ELECTRONIC COMPONENTS DIVISION <i>[Logo]</i> Municipal Airport Benning, California	
B	DBA50H--*P*
DWG SIZE	CODE 11139 SHEET 1 of 1