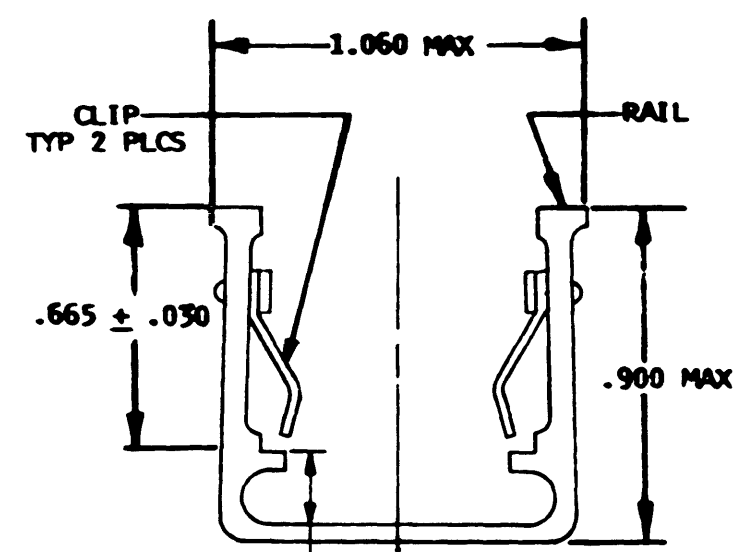
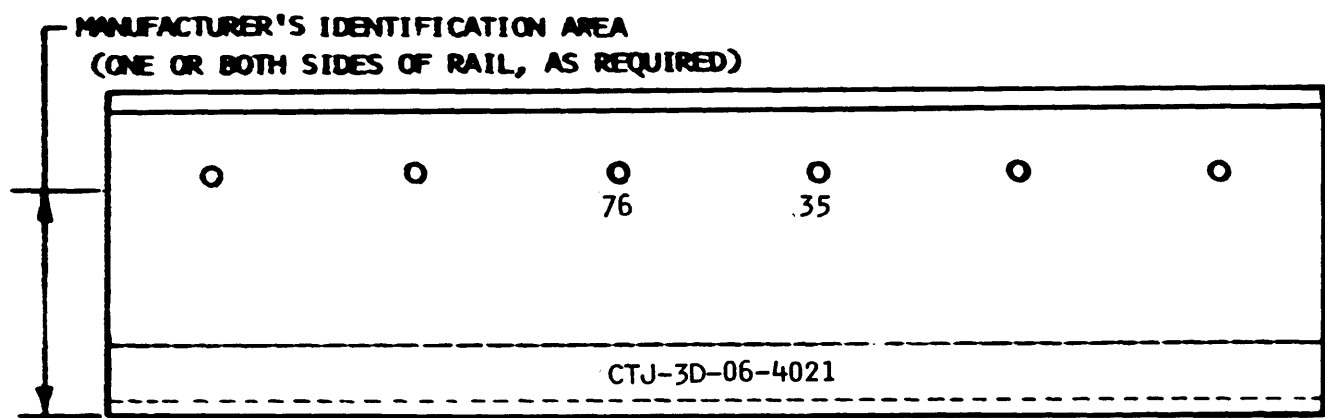
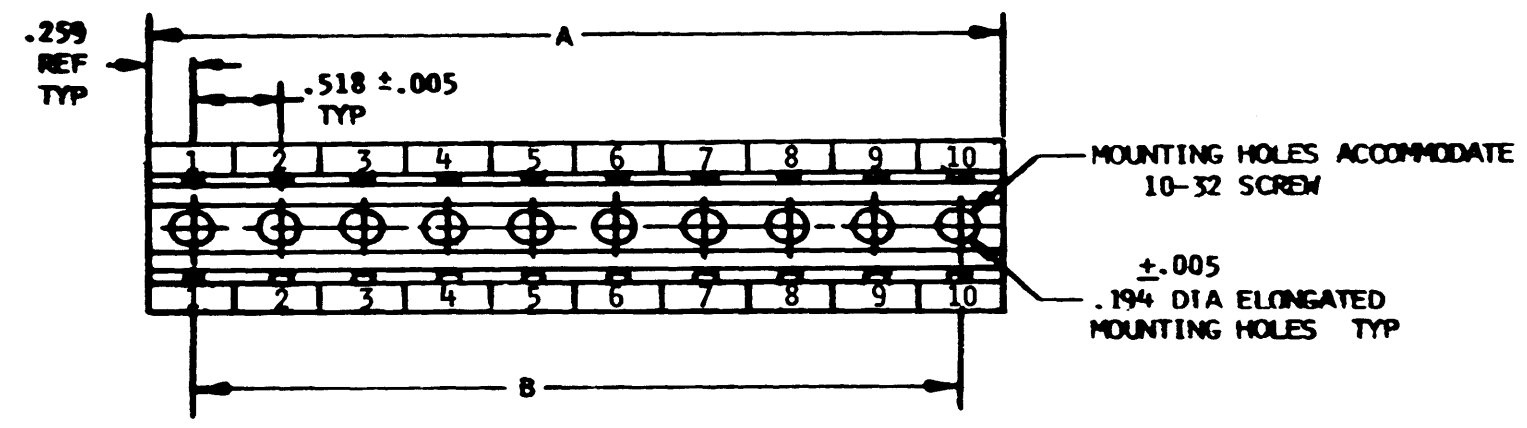


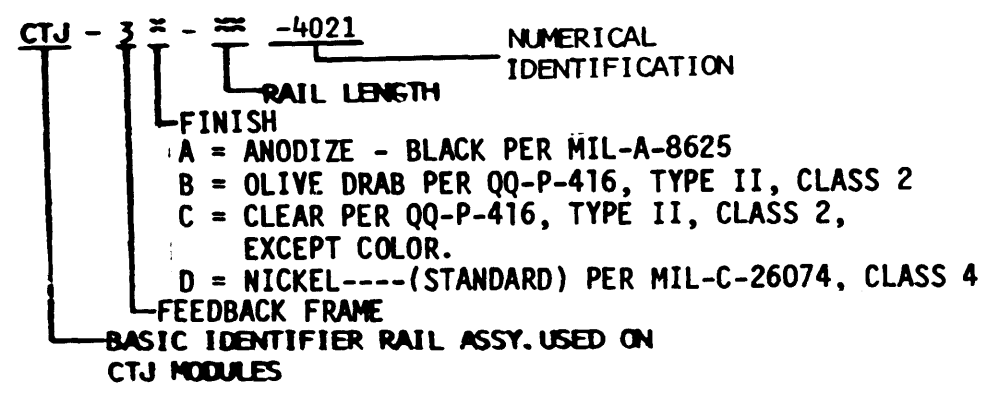
CTJ-3D-10-4021

REVISIONS			
REV	DESCRIPTION	DATE	APPROVED
N/C	NEW RELEASE PER E.O. 82144	5-26-76	Ro.H.
A	ADDED SHEET 2 PER E.O. 84845	1/13/78	
B	REVISED PER E.O. 85183	1/25/78	
C	REVISED PER E.O. 87478	4/6/78	L. Stalle
D	REDESIGNED PER E.O. 86231	1/9/79	m. h.
E	REVISED PER E.O. 89271	3-25-80	m. h.
F	REVISED PER E.O. 95656	12-7-82	T. H.
G	REVISED PER E.O. 94742	7-14-83	L. Stalle
H	REVISED PER E.O. A4728	2-24-87	WEM



.165 MIN SPACE ALLOWED FOR MOUNTING COMPONENTS

4. RAIL ASSEMBLY - PART NO. BREAKDOWN:



***	A ±.015	B ±.015
02	1.036	.518
03	1.554	1.036
04	2.072	1.554
05	2.590	2.072
06	3.108	2.590
07	3.626	3.108
08	4.144	3.626
09	4.662	4.144
10	5.180	4.662

3. SEE DEUTSCH ENVELOPE DRAWINGS FOR THE FOLLOWING COMPONENTS:

MODULE: CTJ-3D-06-4021  
MODULE REMOVAL TOOL: CTJ-R06

2. EXAMPLE OF MANUFACTURER'S IDENTIFICATION:



1. DIMENSIONS ARE IN INCHES UNLESS OTHERWISE SPECIFIED.

NOTES:

SIGNATURE & DATE		RAIL ASSEMBLY CTJ NUMERICAL IDENTIFICATION ENVELOPE	FORM CODE 16
DR	<i>Raymond Haringen 5/26/76</i>		The Deutsch Company ELECTRONIC COMPONENTS DIVISION Municipal Airport Banning, California
CHK	JDM		
PE	<i>Raymond Haringen 5/26/76</i>		B
APPD			CTJ-3D-10-4021
SCALE NONE	WT		CODE 11120 SHEET 1 OF 2

7

6

5

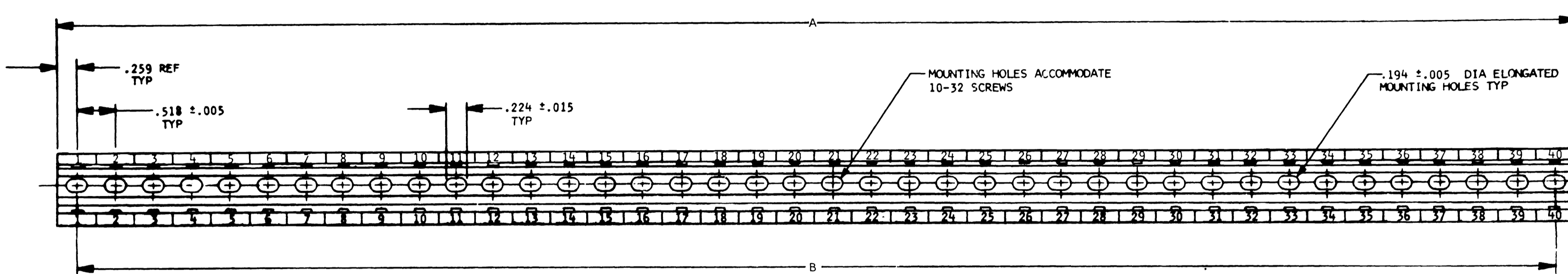
4 ↓

3

2

1

REVISIONS			
SYM	DESCRIPTION	DATE	APPROVED
A	ADDED SHEET 2 PER E.O. 84845	1/13/78	JDM
B	REVISED PER E.O. 85183	1/25/78	
C	REVISED PER E.O. 87478	12/6/78	L. Stolle
F	SEE SHEET 1	8-7-82	T. H.
G	SEE SHEET 1	7-14-83	L. Stolle
H	REVISED PER E.O. A4728	2-24-87	A.C. 03/04/87



SIDE VIEW SAME AS SHOWN ON SHEET ONE EXCEPT FOR LENGTH

END VIEW SAME AS SHOWN ON SHEET ONE

CTJ-3X-4021

55	28.490	27.972
40	20.720	20.202
35	18.130	17.612
32	16.576	16.058
30	15.540	15.022
25	12.950	12.432
20	10.360	9.842
14	7.252	6.734
12	6.216	5.698
***	"A" DIM ±015	"B" DIM ±015

2. MARKING SHOWN ON DRAWING IS FOR RAIL LENGTH 40. THE LAST NUMBER MARKED ON OTHER LENGTH RAILS WILL CONFORM TO RESPECTIVE \*\*\* CALLOUT IN TABLE.

1. ALL NOTES ON SHEET ONE APPLY TO THIS DRAWING.  
NOTE:

SIGNATURE & DATE		RAIL ASSEMBLY CTJ NUMERICAL IDENTIFICATION ENVELOPE	CP	MATL CODE 16
DR	<i>John G. [Signature]</i> 1/13/78		<b>The Deutsch Company</b> ELECTRONIC COMPONENTS DIVISION Municipal Airport Banning, California	
CHK	<i>L. Aguilar</i> 1-16-78		C	CTJ-3X-4021
PE	<i>MAC DONALD</i> 1-16-78		DWG SIZE	CODE 11139 SHEET 2 OF 2
APPD		SCALE NONE	WT	