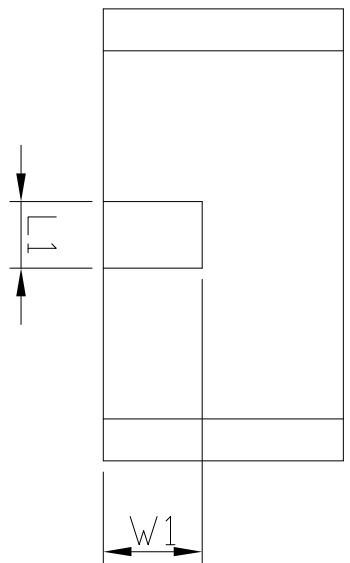
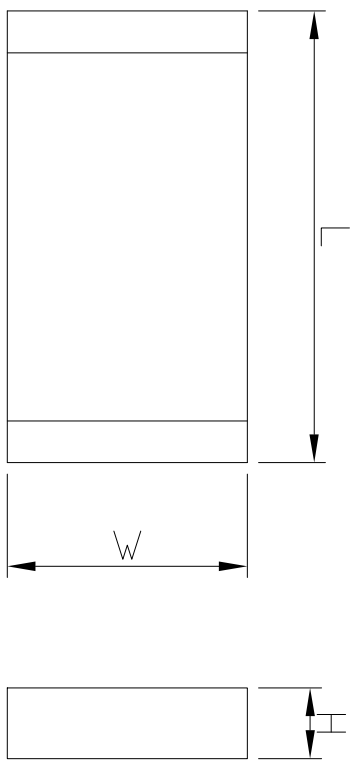


REVISIONS		DATE	BY	APP
P	LR	DESCRIPTION	PH	AC
1		FIRST RELEASE	PH	AC
		22062018		



L 3.20 ± 0.30
W 1.70 ± 0.20
H 0.50 ± 0.10
L1 0.47 ± 0.20
W1 0.70 ± 0.20

NOTES:

1. MATERIALS : REFER TO TABLE.
2. A: ALL MATERIALS, COMPONENTS AND PROCESSES SHALL COMPLY WITH TEC-138-702 (CONTAINS NO BANNED OR RESTRICTED SUBSTANCES)
- B: NO REACH SVHC SHALL BE CONTAINED ABOVE THE THRESHOLD AS DEFINED IN REACH SVHC
- C: LOW HALOGEN: CODE 2(Br<900PPM, Cl<900PPM, Br+Cl<1500PPM PER HOMOGENEOUS MATERIAL) COMPLIANCE DEFINITION IN ANNEX A OF TEC-138-702
3. CONTACT TE CONNECTIVITY ENGINEERING PRIOR TO DESIGNING INTO AN APPLICATION

TE PN 2195765-1

THIS DRAWING IS A CONTROLLED DOCUMENT.		DATE	20262018
DRAWN BY: AMOS CHEAH		CHK	20262018
DESIGNER: AMOS CHEAH		DATE	20262018
PRODUCT SPEC		NAME	GPS+2.4G
APPLICATION SPEC		SIZE	A2
TOLERANCES UNLESS OTHERWISE SPECIFIED:		CODE	2195765
0 R/C	±	ISSUE	1
1 R/C	±	SCALE	1:1
2 R/C	±	SHEET	1 of 1
3 R/C	±	REV	1
4 R/C	±		
FINISH	±		
MATERIAL		CUSTOMER DRAWING	

