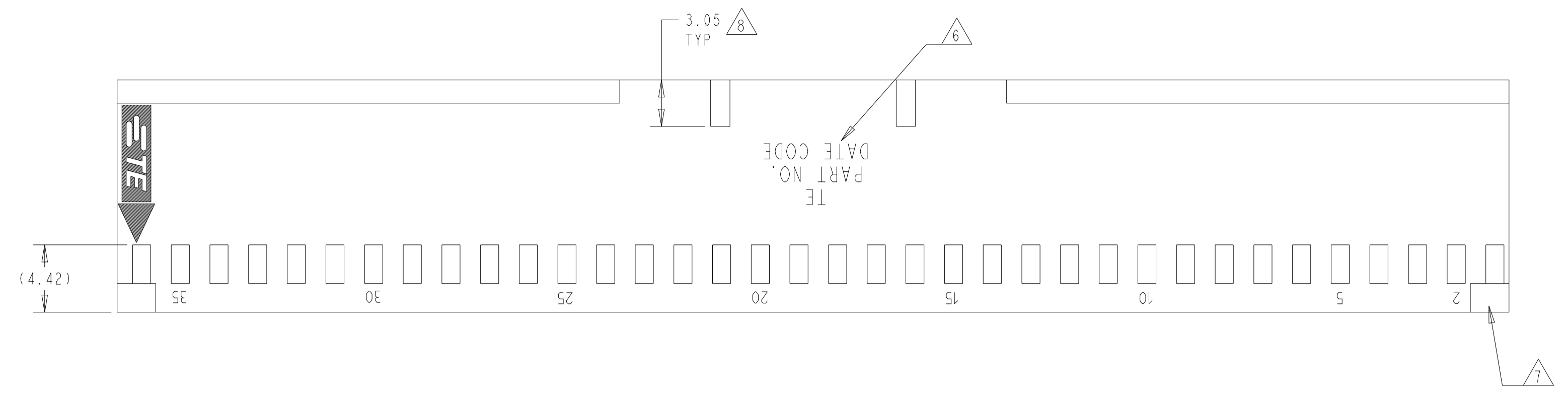
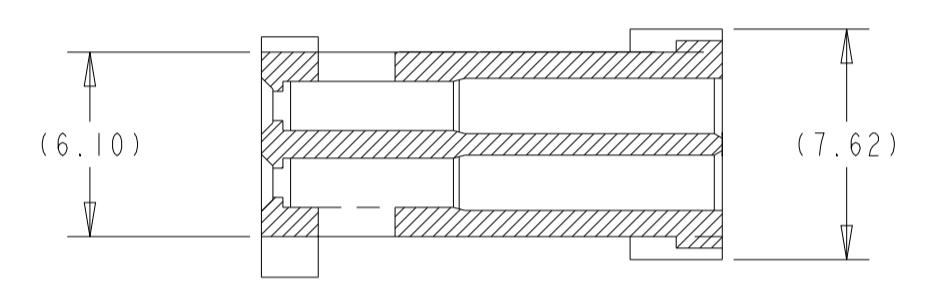
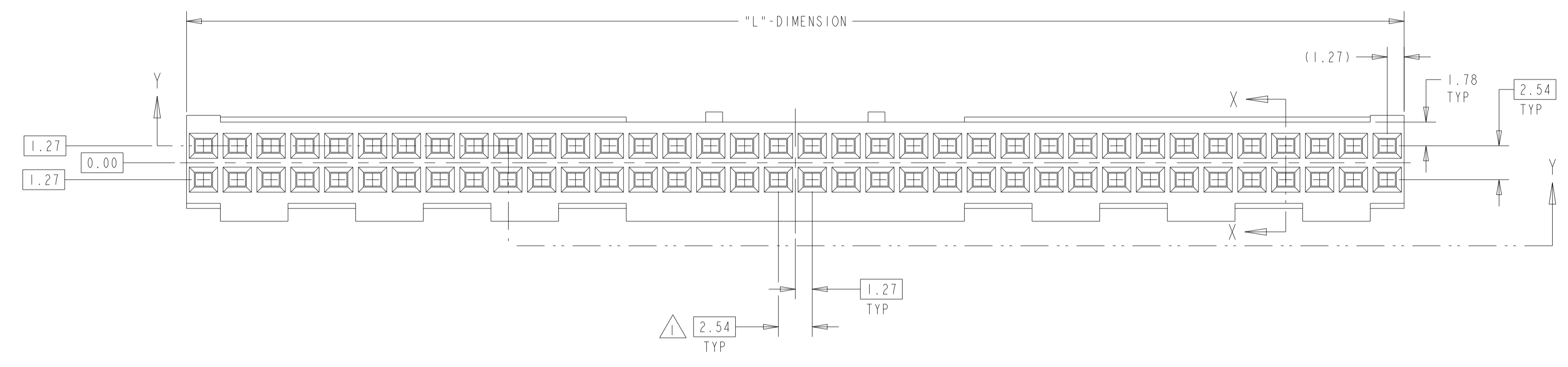


REVISIONS					
P	LTN	DESCRIPTION	DATE	OWN	APPD
T3		REVISED PER ECO-11-004587	11MAR11	KH	JO
U		REVISED PER ECO-18-000976	18MAY2018	RS	JO
V		REVISED PER ECR-22-132152	15JUN2022	RK	SD
V1		REVISED PER ECN-23-211206	24JUN2023	RK	MF

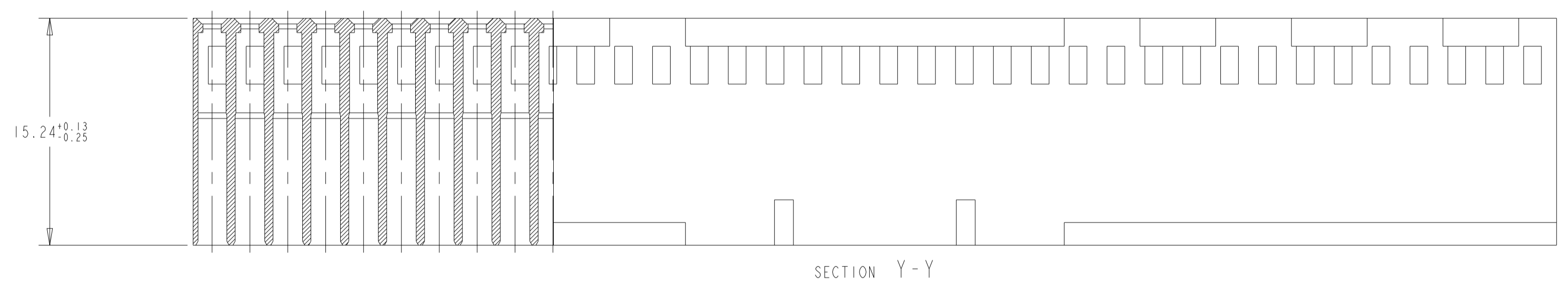


- △ CAVITY LOCATION DIMENSIONS INCREASE IN INCREMENTS OF 2.54 TOLERANCES ARE NON-CUMULATIVE.
- 2. USE EXTRACTION TOOL 91052-1 TO REMOVE RECEPTACLE CONTACTS
- 3. THESE HOUSINGS ARE COMPATIBLE WITH ANY MOD II SHROUDED HEADER
- 4. HOUSINGS WILL ACCOMODATE ALL MOD IV, IV.5, AND MOD V CONTACTS.
- △ 5 OBSOLETE PARTS: OBSOLETE CIS STREAMLINING PER D.RENAUD/D.SINISI
- △ 6 'TE' PART NUMBER AND DATE CODE MARKED WHEN HOUSING SIZE PERMITS.
- △ 7 1.17±.38 CHARS. MARKED CAVITY IDENTS, SECOND AND EVERY FIFTH CAVITY, ONE SIDE, AS SHOWN.
- △ 8 STRAIN RELIEF LOCATORS WILL APPEAR ON 20 POSITION AND LARGER HOUSINGS.
- △ 9 MATERIAL: GLASS FILLED THERMOPLASTIC, UL 94-V0 RATED, COLOR: BLACK.
- 10. THE PRODUCT IS IN PROCESS FOR UL RECOGNITION.
- 11. THE PRODUCT IS IN PROCESS FOR QUALIFICATION, AND IS NOT YET QUALIFIED

LONGEST POSITION SHOWN



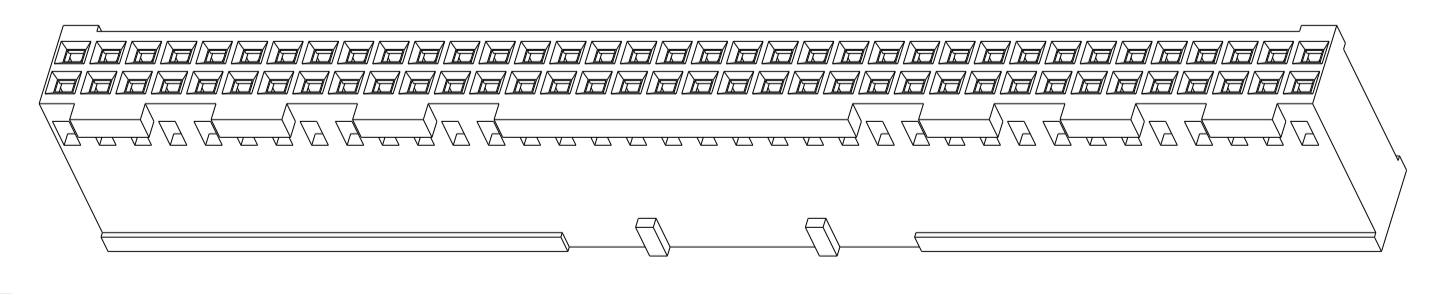
SECTION X-X



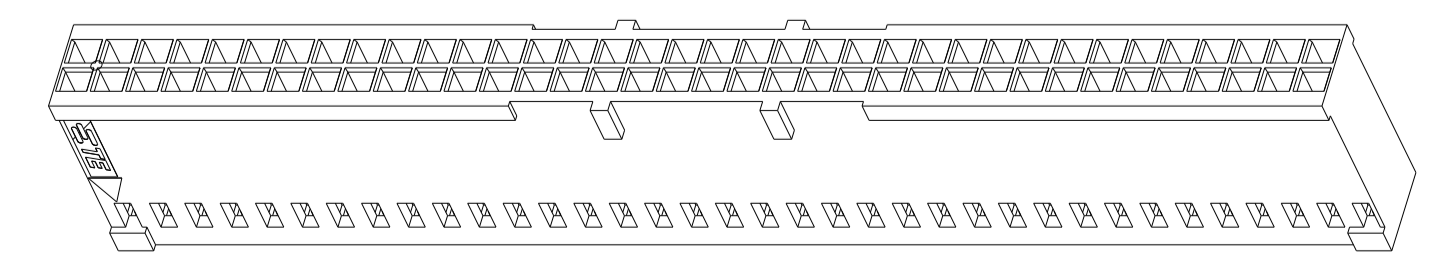
SECTION Y-Y

ALL	6-87977-2	81.28	31	64	6-87977-1
ALL	6-87977-0	73.66	28	58	5-87977-9
ALL	5-87977-8	71.12	27	56	5-87977-7
ALL	5-87977-6	60.96	23	48	5-87977-5
ALL	5-87977-4	91.44	35	72	2-87977-7
ALL	5-87977-3	88.9	34	70	2-87977-6
ALL	5-87977-2	83.82	32	66	2-87977-5
ALL	5-87977-1	76.2	29	60	2-87977-4
ALL	5-87977-0	68.58	26	54	2-87977-3
ALL	4-87977-9	66.04	25	52	2-87977-2
ALL	4-87977-8	63.5	24	50	2-87977-1
ALL	4-87977-7	55.88	21	44	2-87977-0
ALL	4-87977-6	53.34	20	42	1-87977-9
ALL	4-87977-5	50.8	19	40	1-87977-8
ALL	4-87977-4	48.26	18	38	1-87977-7
ALL	4-87977-3	45.72	17	36	1-87977-6
ALL	4-87977-2	43.18	16	34	1-87977-5
ALL	4-87977-1	40.64	15	32	1-87977-4
ALL	4-87977-0	38.1	14	30	1-87977-3
ALL	3-87977-9	35.56	13	28	1-87977-2
ALL	3-87977-8	33.02	12	26	1-87977-1
ALL	3-87977-7	30.48	11	24	1-87977-0
ALL	3-87977-6	27.94	10	22	87977-9
ALL	3-87977-5	25.4	9	20	87977-8
ALL	3-87977-4	22.86	8	18	87977-7
ALL	3-87977-3	20.32	7	16	87977-6
ALL	3-87977-2	17.78	6	14	87977-5
ALL	3-87977-1	15.24	5	12	87977-4
NO PART #	3-87977-0	12.7	4	10	87977-3
NO PART #	2-87977-9	10.16	3	8	87977-2
NOTE# 6	2-87977-8	7.62	2	6	87977-1

ISOMETRIC VIEW



SCALE 2:1



SCALE 2:1

THIS DRAWING IS A CONTROLLED DOCUMENT. **TE Connectivity**

DIMENSIONS:	TOLERANCES UNLESS OTHERWISE SPECIFIED:	OWN: BOB BOLES BG 18DEC89	CHK: P. SREMCICH 05OCT93	APVD: P. SREMCICH 05OCT93	NAME: MOD IV CRIMP SNAP-IN CONNECTOR, DOUBLE ROW, 2.54 CENTERS
mm	0 PLC ± 1 PLC ±0.5 2 PLC ±0.5 3 PLC ±0.13 4 PLC ± ANGLES ±	APPL: PRODUCT SPEC	APPL: APPLICATION SPEC	SIZE: A	CAGE CODE: 00779
MATERIAL: 9	FINISH: ±0° 30'	WEIGHT: -	CUSTOMER DRAWING	SCALE: 4:1	SHEET 1 OF 1