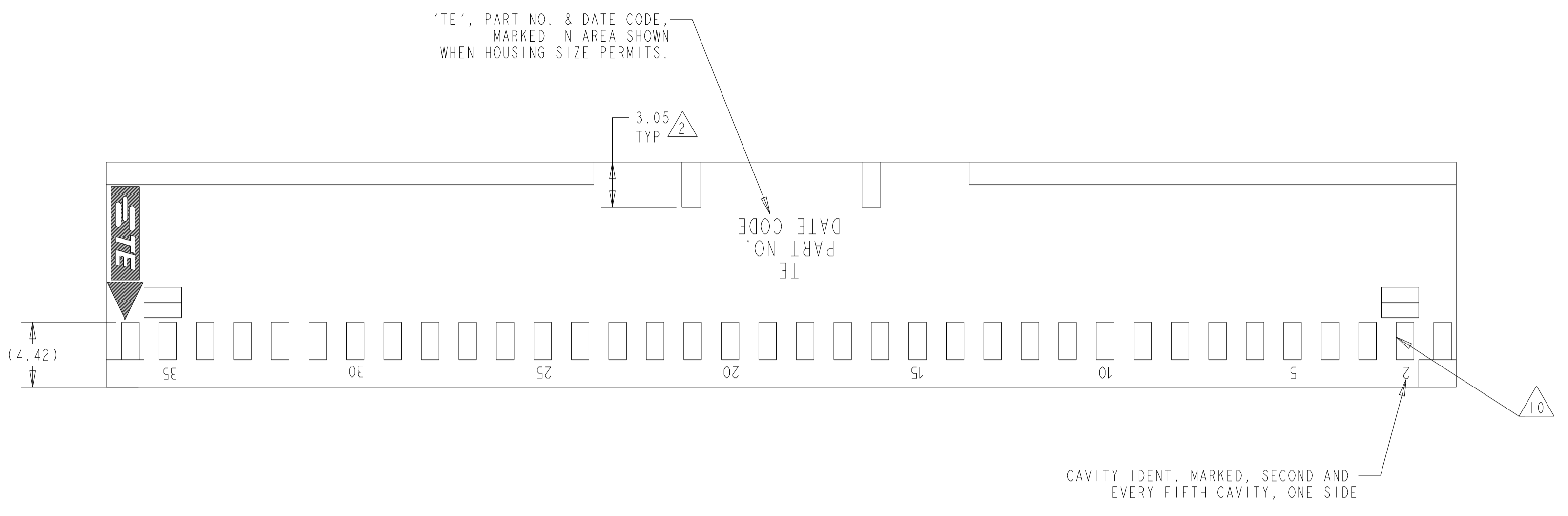
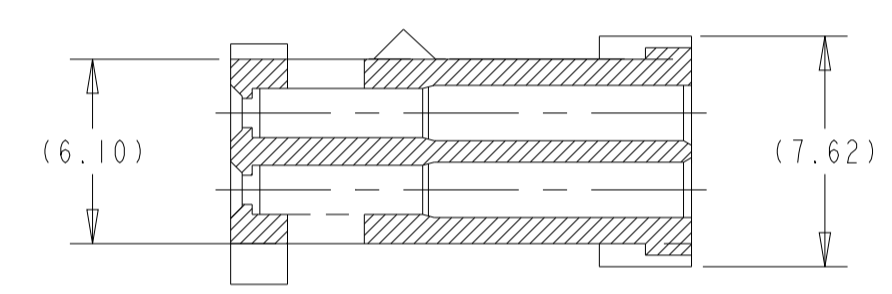
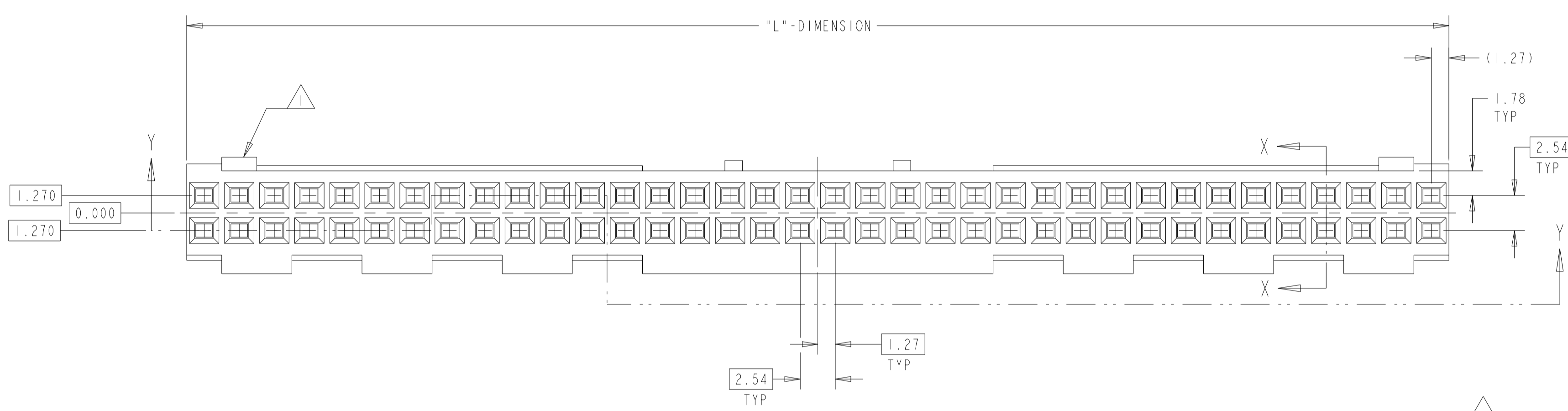


REVISIONS					
P	LTN	DESCRIPTION	DATE	DWN	APVD
W4		REVISED PER ECO-13-004115	01MAR13	KH	JO
Y		REVISED PER ECO-18-000976	18MAY2018	RS	JO
Z		REVISED PER ECR-22-132152	15JUN2022	RK	SD
AA		REVISED PER ECR-24-200173	15FEB2024	RK	MF

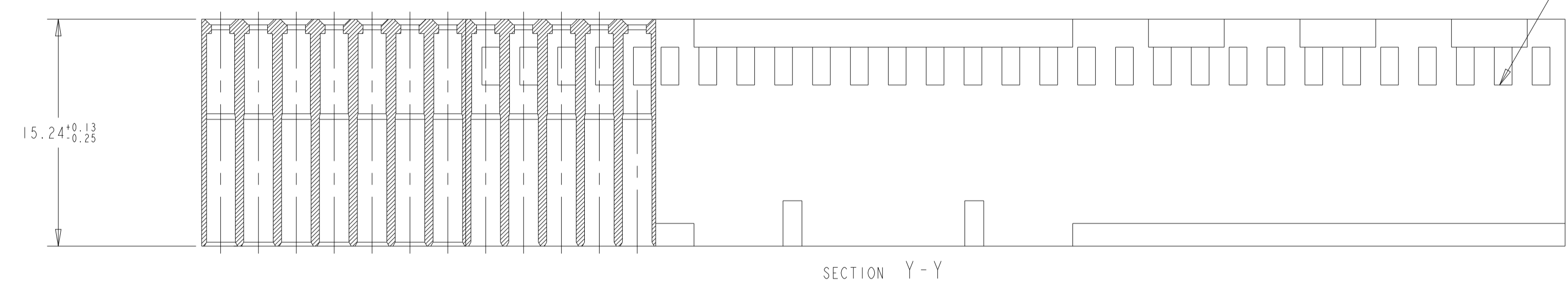


- 1 SEE TABLE FOR NUMBER OF DETENTS. DETENT ON THIS SIDE FOR HOUSINGS WITH ONE DETENT.
- 2 STRAIN RELIEF LOCATORS WILL APPEAR ON 20 POSITION AND LARGER HOUSINGS
- 3 USE EXTRACTION TOOL 91052-1 TO REMOVE RECEPTACLE CONTACTS
- 4 THESE HOUSINGS ARE COMPATIBLE WITH ANY MOD II SHROUDED HEADER
- 5 HOUSINGS WILL ACCOMMODATE ALL MOD IV, IV.5, AND MOD V CONTACTS.
- 6 OBSOLETE PARTS: OBSOLETE CIS STREAMLINING PER D.RENAUD/D.SINISI
- 7 MATERIAL: GLASS FILLED THERMOPLASTIC, UL 94-V0 RATED, COLOR: BLACK.
- 8. THE PRODUCT IS IN PROCESS FOR UL RECOGNITION.
- 9. THE PRODUCT IS IN PROCESS FOR QUALIFICATION, AND IS NOT YET QUALIFIED
- 10 CRITICAL DIMENSION: MAX. FLASH PERMITTED OF 0.127 mm EITHER SIDE.

LONGEST POSITION SHOWN



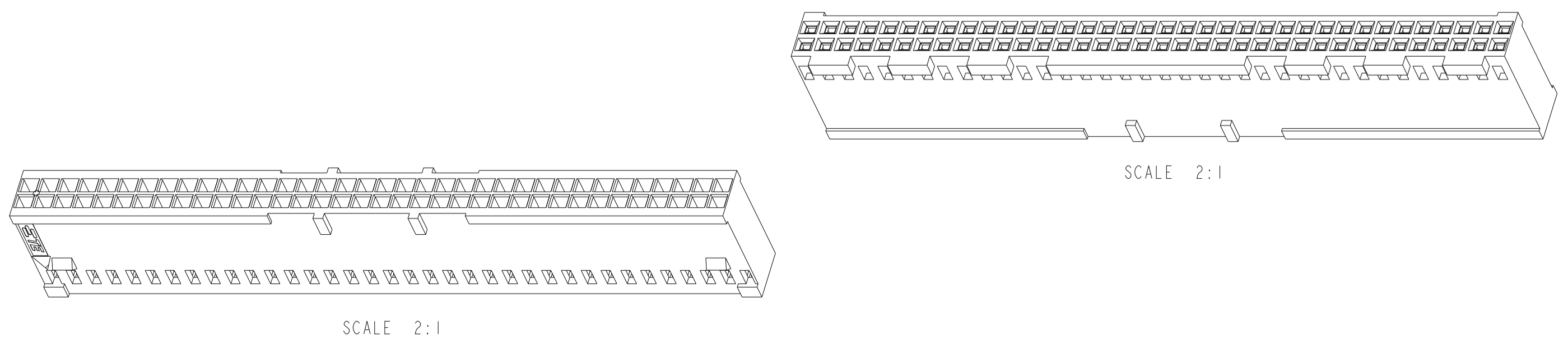
SECTION X-X



SECTION Y-Y

ALL	6-87631-5	2	81.28	31	64	6-87631-6
ALL	6-87631-3	2	73.66	28	58	6-87631-4
ALL	6-87631-1	2	71.12	27	56	6-87631-2
ALL	5-87631-9	2	60.96	23	48	6-87631-0
ALL	5-87631-7	2	91.44	35	72	5-87631-8
ALL	5-87631-5	2	88.9	34	70	5-87631-6
ALL	5-87631-3	2	83.82	32	66	5-87631-4
ALL	5-87631-1	2	76.2	29	60	5-87631-2
6	ALL	4-87631-9	2	-	-	5-87631-0
ALL	4-87631-7	2	-	-	-	4-87631-8
ALL	4-87631-5	2	68.58	26	54	4-87631-6
ALL	4-87631-3	2	66.04	25	52	4-87631-4
ALL	4-87631-1	2	63.5	24	50	4-87631-2
ALL	3-87631-9	2	55.88	21	44	4-87631-0
ALL	3-87631-7	2	53.34	20	42	3-87631-8
ALL	3-87631-5	2	50.8	19	40	3-87631-6
ALL	3-87631-3	2	48.26	18	38	3-87631-4
ALL	3-87631-1	2	45.72	17	36	3-87631-2
ALL	2-87631-9	2	43.18	16	34	3-87631-0
ALL	2-87631-7	2	40.64	15	32	2-87631-8
ALL	2-87631-5	2	38.1	14	30	2-87631-6
ALL	2-87631-3	2	35.56	13	28	2-87631-4
ALL	2-87631-1	2	33.02	12	26	2-87631-2
ALL	1-87631-9	2	30.48	11	24	2-87631-0
ALL	1-87631-7	2	27.94	10	22	1-87631-8
ALL	1-87631-5	2	25.4	9	20	1-87631-6
ALL	1-87631-3	1	22.86	8	18	1-87631-4
ALL	1-87631-1	1	20.32	7	16	1-87631-2
ALL	87631-9	1	17.78	6	14	1-87631-0
ALL	87631-7	1	15.24	5	12	87631-8
NO PART #	87631-5	1	12.7	4	10	87631-6
NO PART #	87631-3	1	10.16	3	8	87631-4
NOTE# 6	87631-1	1	7.62	2	6	87631-2
MARKING	UNMARKED HOUSING PART NUMBER	NUMBER OF DETENTS	"L" DIM	NUMBER OF SPACES	NUMBER OF POSITIONS	MARKED HOUSING PART NUMBER

ISOMETRIC VIEW



SCALE 2:1

SCALE 2:1

THIS DRAWING IS A CONTROLLED DOCUMENT.

DIMENSIONS: mm

TOLERANCES UNLESS OTHERWISE SPECIFIED:

0 PLC	±
1 PLC	±0.5
2 PLC	±0.13
3 PLC	±0.13
4 PLC	±0.13
ANGLES	±0° 30'
FINISH	-

MATERIAL: 7

APPROVED: D. DUPLER

PRODUCT SPEC: -

APPLICATION SPEC: -

WEIGHT: -

CUSTOMER DRAWING

DATE: 09FEB94

CHK: F. BRANDENBERG

S. SHUEY

APVD: D. DUPLER

08NOV94

08NOV94

NAME: MOD IV CRIMP SNAP-IN CONNECTOR, DOUBLE ROW, 2.54 CENTERS, SHORT ENTRY

SIZE: A

CAGE CODE: 00779

DRAWING NO: 87631

RESTRICTED TO: -

SCALE: 4:1

SHEET: 1 OF 1

REV: AA