



|  |                 |                                      |                                   |  |                           |  |                             |                  |
|--|-----------------|--------------------------------------|-----------------------------------|--|---------------------------|--|-----------------------------|------------------|
| LOC<br>A1  | DIST<br>00      | REVISIONS                            |                                   |  |                           |  |                             |                  |
|  |                 | P                                    | LTR                               | DESCRIPTION  | DATE                      | DWN  | APVD                        |                  |
|  |                 | A1                                   |                                   | ECR-20-010505  | 23JUL2020                 | LS   | GS                          |                  |
| <b>CRIMP DATA (TE TERMINAL)</b>  |                 |                                      |                                   |  |                           |  |                             |                  |
| <b>TERMINAL NAME</b>   |                 | EMC, CRIMP SLEEVE, IPT 70 - 12       |                                   |  |                           |  |                             |                  |
| <b>CRIMP</b>   | <b>SIZE</b>     | <b>TYPE</b>                          |                                   | <b>RANGE</b>   |                           |  |                             |                  |
| <b>WIRE</b>  | (X)             | (X)                                  |                                   | (X)  |                           |  |                             |                  |
| <b>INSULATION</b>  | -               | Hex- Crimp                           |                                   | 95 mm <sup>2</sup>   |                           |  |                             |                  |
| <b>WIRE STRIP LENGTH</b>   | see Appl. Spec. | <b>APPLICATOR INSTRUCTION</b>        |                                   | -  |                           |  |                             |                  |
| <b>TERMINAL APPLICATION SPEC</b><br>114-18769  |                 |                                      | <b>PRODUCT SPECIFICATION</b><br>- |  | <b>FEED</b>               |  |                             |                  |
| <b>TERMINALS APPLIED</b>   |                 |                                      |                                   | <b>SEALS</b>   |                           |  |                             |                  |
| 1670813-1  |                 |                                      |                                   |  |                           |  |                             |                  |
|  |                 |                                      |                                   |  |                           |  |                             |                  |
|  |                 |                                      |                                   |  |                           |  |                             |                  |
| <b>WIRE SIZE</b>   |                 | <b>CRIMP HEIGHT</b>                  |                                   | <b>REF SETTINGS</b>  |                           |  |                             |                  |
| 95 SQ.MM   |                 | 21,7 +/-0,4                          |                                   | -  |                           |  |                             |                  |
|  |                 |                                      |                                   |  |                           |  |                             |                  |
|  |                 |                                      |                                   |  |                           |  |                             |                  |
| <b>REMARK:</b><br>Die set TE P/N 4-1579026-3<br>Huber&Suhner FHLR, RADOX 95sq.mm   |                 |                                      |                                   |  |                           |  |                             |                  |
| <b>TYPE:</b><br>-  |                 |                                      |                                   |  |                           |  |                             |                  |
| <b>TERMINATOR:</b><br>DIE SET TO BE USED WITH CRIMP PRESS ADAPTOR PN 541868-1  |                 |                                      |                                   |  |                           |  |                             |                  |
| <b>DIMENSION:</b><br>mm  |                 | <b>DWN</b><br>L.Sandhu               | <b>02JUL2020</b>                  | <b>MATERIAL</b>  |                           | <b>FINISH</b>  |                             |                  |
| <small>TOLERANCES UNLESS OTHERWISE SPECIFIED:</small><br>0 PLC ± -<br>1 PLC ± -<br>2 PLC ± -<br>3 PLC ± -<br>4 PLC ± -<br>ANGLES ± - |                 | <b>CHK</b><br>L.Sandhu               | <b>02JUL2020</b>                  |  <b>TE Connectivity</b> |                           |  |                             |                  |
|  |                 | <b>APVD</b><br>G.Stegmayer           | <b>02JUL2020</b>                  |  |                           |  |                             |                  |
|  |                 | <b>PRODUCT SPEC</b><br>-             |                                   | <b>NAME</b><br>DIE SET, INCL. LOCATOR, IPT 95SQ.MM   |                           |  |                             |                  |
|  |                 | <b>APPLICATION SPEC</b><br>114-18769 |                                   | <b>SIZE</b><br>A4  | <b>CAGE CODE</b><br>00779 | <b>DRAWING NO.</b><br> <b>8-528041-5</b> | <b>RESTRICTED TO</b><br>--- |                  |
|  |                 | <b>WEIGHT</b><br>1.5 kg              |                                   |  |                           |  |                             |                  |
|  |                 | <b>CUSTOMER DRAWING</b>              |                                   |  |                           | <b>SCALE</b><br>-  | <b>SHEET</b><br>1 of 2      | <b>REV</b><br>A1 |

RELEASED FOR PUBLICATION 2016

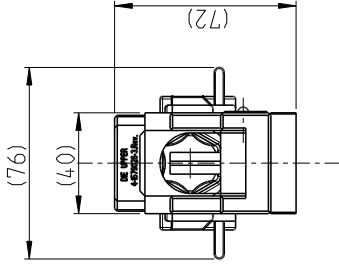
ALL INTERNATIONAL RIGHT RESERVED.

© COPYRIGHT 2016 TE Connectivity Germany GmbH

THIS DRAWING IS UNPUBLISHED.



| REVISIONS |     |             |      |
|-----------|-----|-------------|------|
| P         | LTR | DESCRIPTION | DATE |
|           |     | See sheet 1 |      |
|           |     |             |      |
|           |     |             |      |
|           |     |             |      |

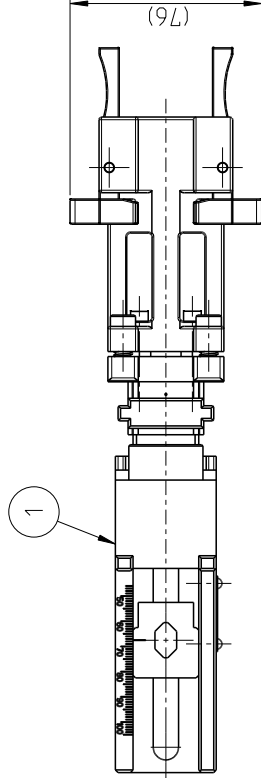
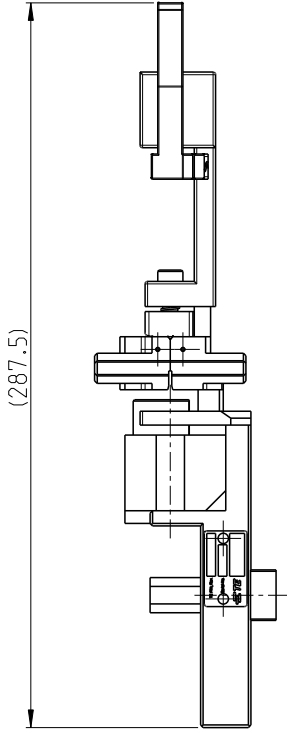


USED WITH:  
 TE P/N 528008-4 - HV CRIMPING MACHINE  
 TE P/N 541868-1 - AT66 DIE-SET ADAPTER, HV

USED WITH CONTACT:  
 TE P/N 1670813-1 - EMC, CRIMP SLEEVE, IPT  
 Included with  
 TE P/N 1670814-1 - EMC, CRIMP CONTACT, IPT

USED FOR RING TONGUE; TE P/N 1670815-2

USED FOR WIRE:  
 H&S Radox 95SQ.MM - 84 100 299



Position 1 included:

| ITEM NO | PCS | PART NO     | REV | DESCRIPTION                              | SPARE PART | WEAR PART |
|---------|-----|-------------|-----|--|------------|-----------|
| 3       | 1   | 2-1722332-2 | A   | HV-WIRE FIXTURE, 19-20MM, ASSEMBLY       | X          |           |
| 2       | 1   | 6-563080-1  | A   | TOOL ASSEMBLY INCL. LOCATOR, IPT 95SQ.MM | X          |           |
| 1       | 1   | 4-1579026-3 | A   | CRIMP DIE SET, BRAID IPT 95SQ.MM         | X          | X         |

THIS DRAWING IS A CONTROLLED DOCUMENT.

|             |    |  |
|-------------|----|--|
| DIMENSIONS: | mm | TOLERANCES UNLESS OTHERWISE SPECIFIED: |
|             |    | 0 - PLC ±                              |
|             |    | 1 - PLC ±                              |
|             |    | 2 - PLC ±                              |
|             |    | 3 - PLC ±                              |
|             |    | 4 - PLC ±                              |
| ANGLES      |    | ±                                      |
| MATERIAL    |    |  |

|                  |              |             |
|------------------|--------------|-------------|
| DWN              | L. Sandhu    | 13AUG2019   |
| CHK              | L. Sandhu    | 13AUG2019   |
| APVD             | G. Stigmayer | 02 JUL 2020 |
| PRODUCT SPEC     |              |             |
| APPLICATION SPEC |              |             |
| WEIGHT           | 114-18769    |             |
| CUSTOMER DRAWING |              |             |

|  |           |                 |
|--|-----------|-----------------|
|  |           | TE Connectivity |
| NAME<br>DIE SET, INCL. LOCATOR,<br>IPT 95SQ.MM |           | RESTRICTED TO   |
| SIZE   | CAGE CODE | DRAWING NO      |
| A3   | 00779     | C-8-528041-5    |
| SCALE  | 1:2       | SHEET           |
|  |           | 2 OF 2          |
|  |           | REV A1          |

