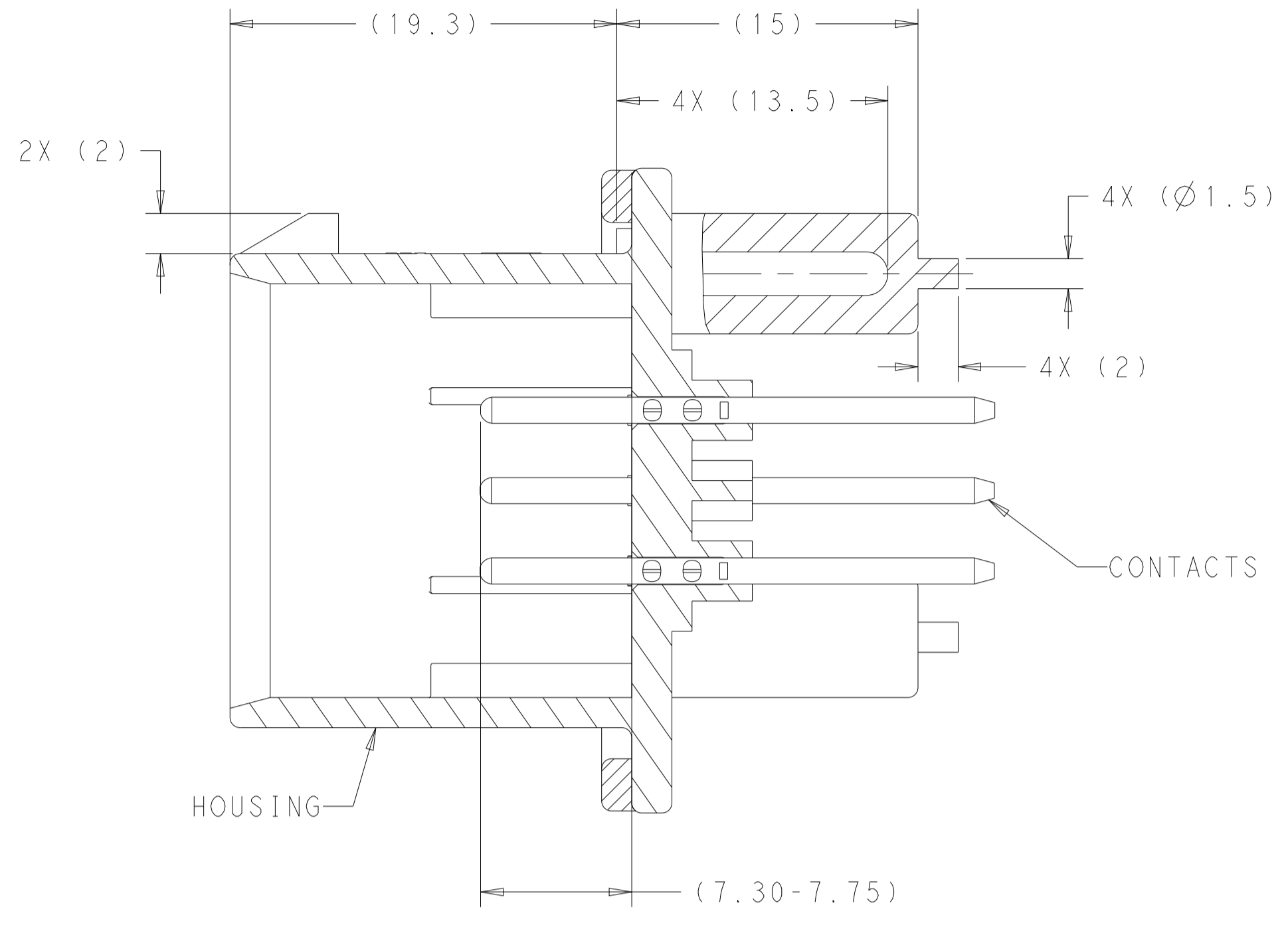
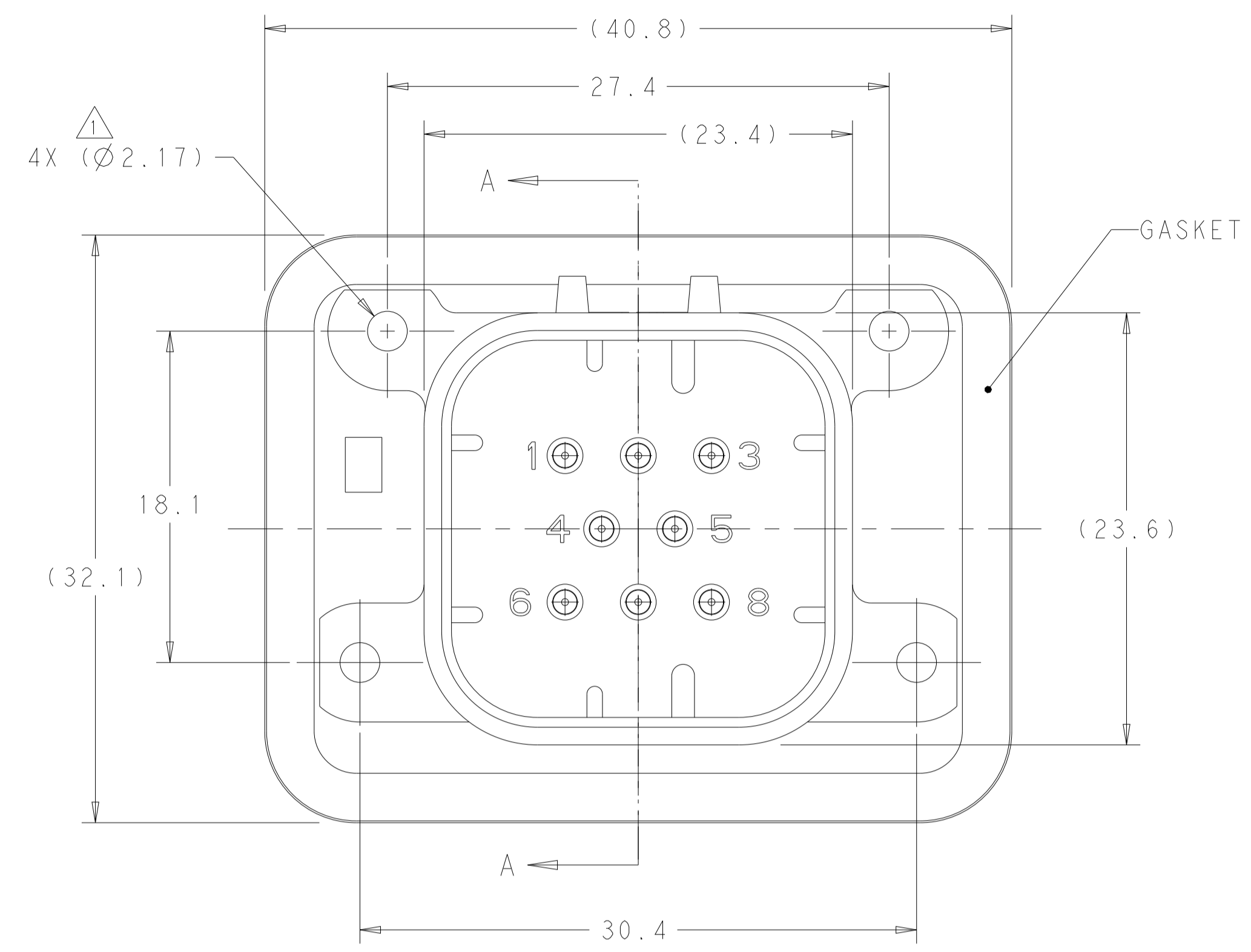


REVISIONS				
P	LTN	DESCRIPTION	DATE	APVD
B13		REV PER ECO-21-001365	29JAN2021	DS DS
B14		REV PER ECR-24-216938	13SEP2024	DK CB



SECTION A-A

△ SUGGESTED MOUNTING SCREW SIZE IS Ø2.50mm [APPROX. 0.099 INCH] SELF TAPPING THREAD FORMING SCREW, SUCH AS DELTA PT, TO BE DRIVEN AT 0.6-0.8 N-m. THE CUSTOMER MUST TEST THE SCREW SIZE AND TYPE IN ORDER TO VERIFY THEIR SELECTION BEFORE USE IN APPLICATION

TO VALIDATE HEADER MOUNTING PERFORMANCE, TE CONNECTIVITY WILL CONTINUE TO UTILIZE THE FOLLOWING TORQUE VALIDATION PROCESS ACCORDING TO APPLICATION SPEC 114-16016:
MOUNTING PANEL THICKNESS - 4.75 +/- 0.15mm
SCREW - 2.5X12mm DELTA PT

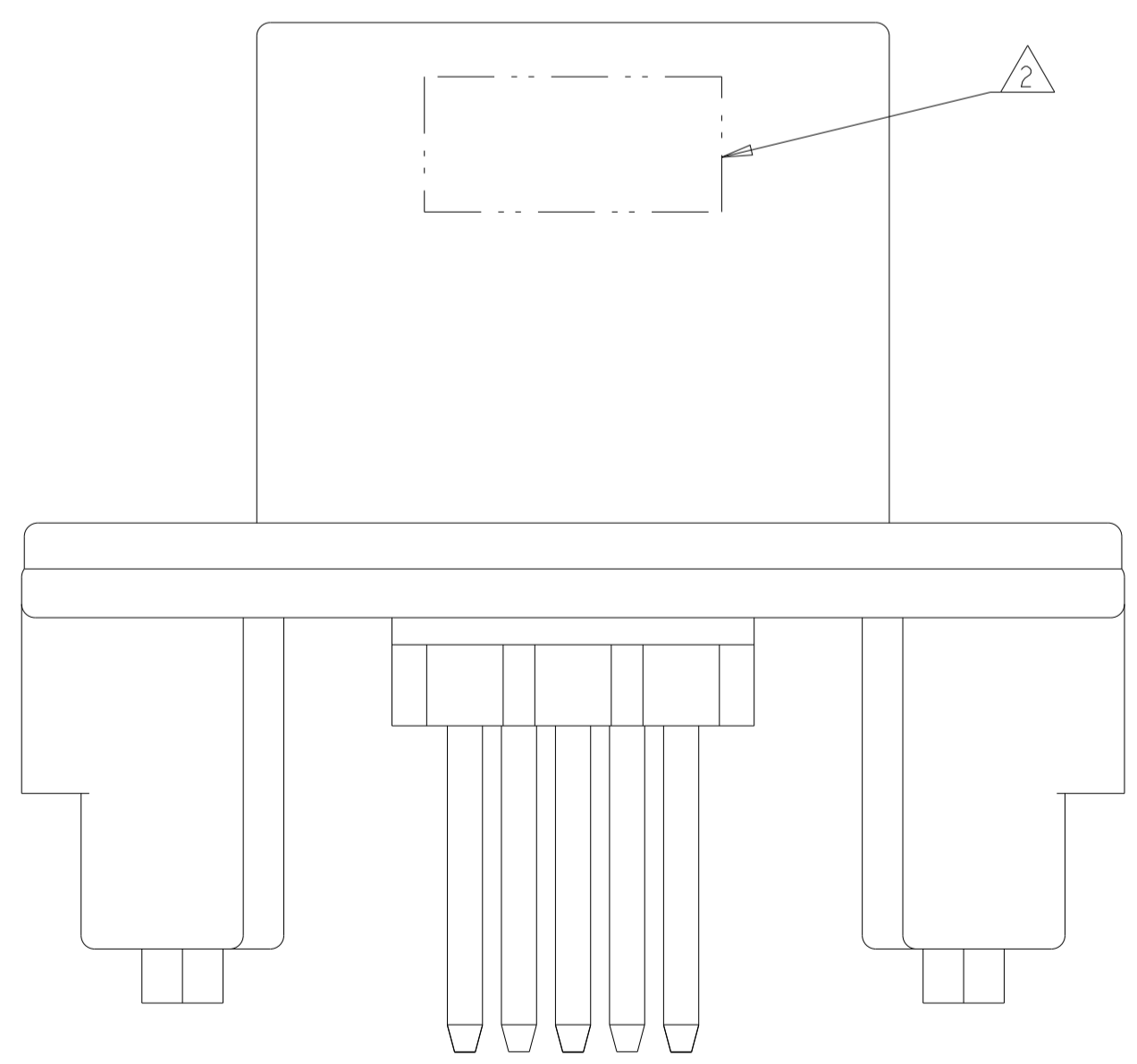
CUSTOMERS MAY VALIDATE OTHER SCREW SIZES AND TYPES AT THEIR OWN DISCRETION

△ DATE CODE IN THIS LOCATION USING 5 DIGIT CODE
FIRST 2 DIGITS = YEAR, SECOND 2 DIGITS = WEEK, LAST DIGIT = DAY.

△ MATERIALS: GASKET - SILICONE
HEADER HOUSING - GLASS FILLED PBT
PINS - TIN OR GOLD PLATED BRASS

△ HOUSING COLORS ARE MECHANICALLY KEYED TO MATE ONLY WITH IDENTICALLY COLORED PLUG ASSEMBLIES.

5. HEADER MATES TO PLUG ASSEMBLY 776286 WHICH USES REELED TERMINAL 770520 OR LOOSE PIECE TERMINAL 770854

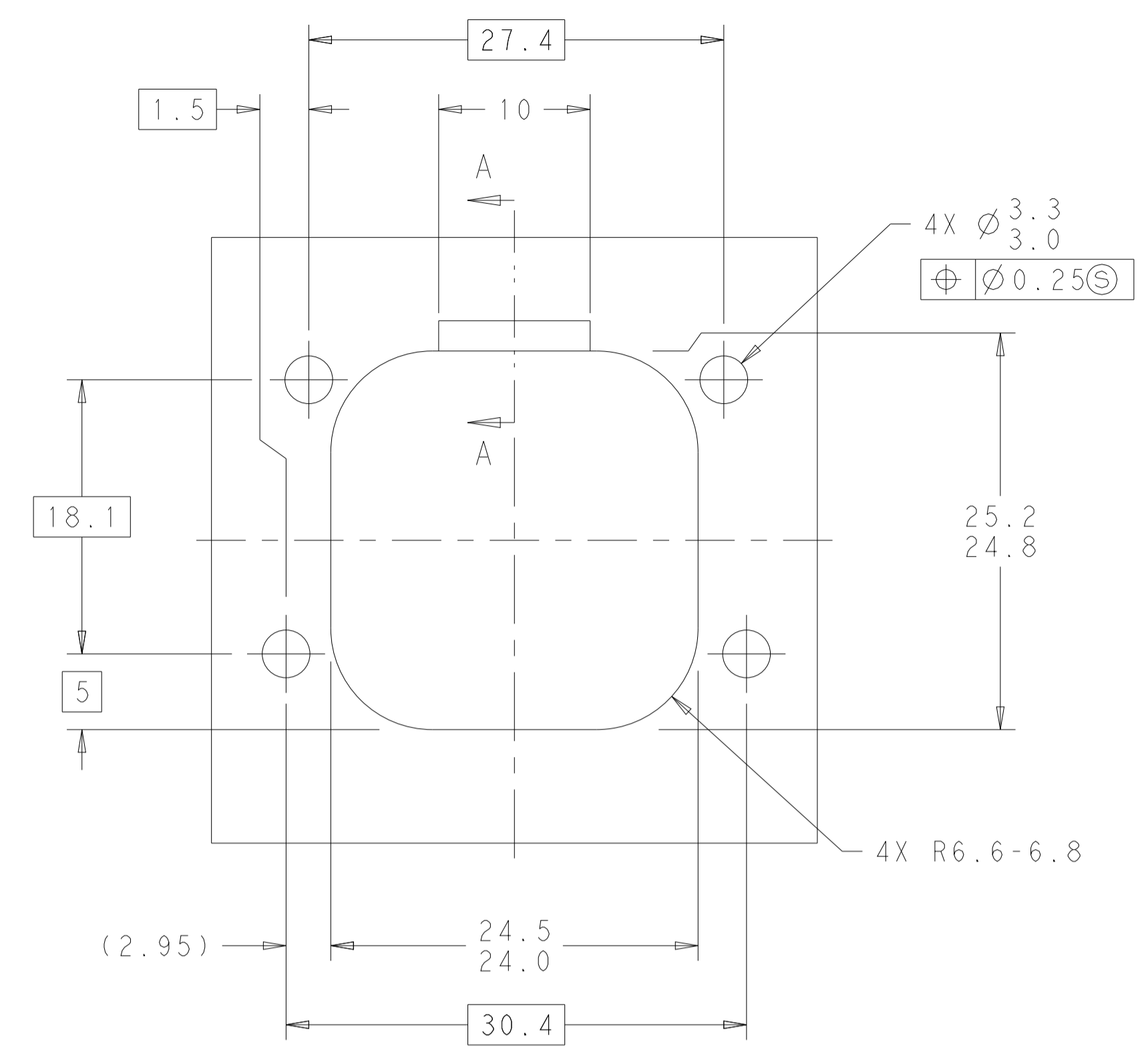


776276-1 & 1-776276-1 SHOWN

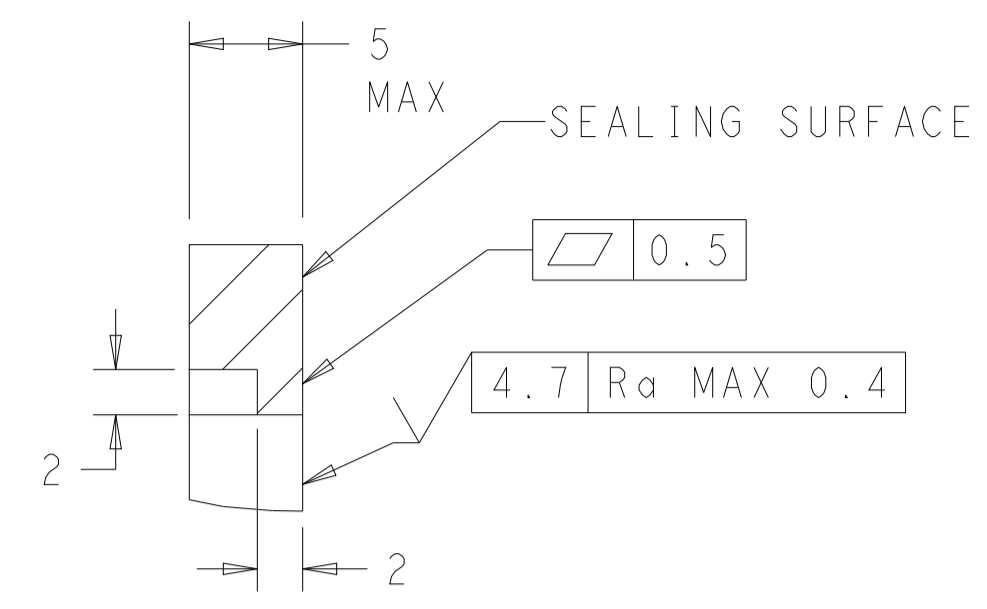
NATURAL	GOLD	1-776276-2
BLACK	GOLD	1-776276-1
NATURAL	TIN	776276-2
BLACK	TIN	776276-1
HEADER COLOR △	PLATING	PART NUMBER

THIS DRAWING IS A CONTROLLED DOCUMENT.		OWN: D. STRAUSSER 21 JAN 2010	TE Connectivity	
DIMENSIONS: mm		CHK: D. STRAUSSER 22 MAR 2010	ASSEMBLY, HEADER 8 POSITION VERTICAL, AMPSEAL WITH FLANGE SEAL	
TOLERANCES UNLESS OTHERWISE SPECIFIED:		APVD: D. STRAUSSER 27 APR 2010	RESTRICTED TO	
0 PLC ±0.2	1 PLC ±0.13	PRODUCT SPEC 108-1329	SIZE A1	CAGE CODE 00779
2 PLC ±0.13	3 PLC ±0.13	APPLICATION SPEC 114-16016	SCALE 4:1	SHEET 1 OF 2
4 PLC ±0.13	ANGLES ±1°	WEIGHT 13.32g	DRAWING NO. 776276	
MATERIAL		CUSTOMER DRAWING		REV B14

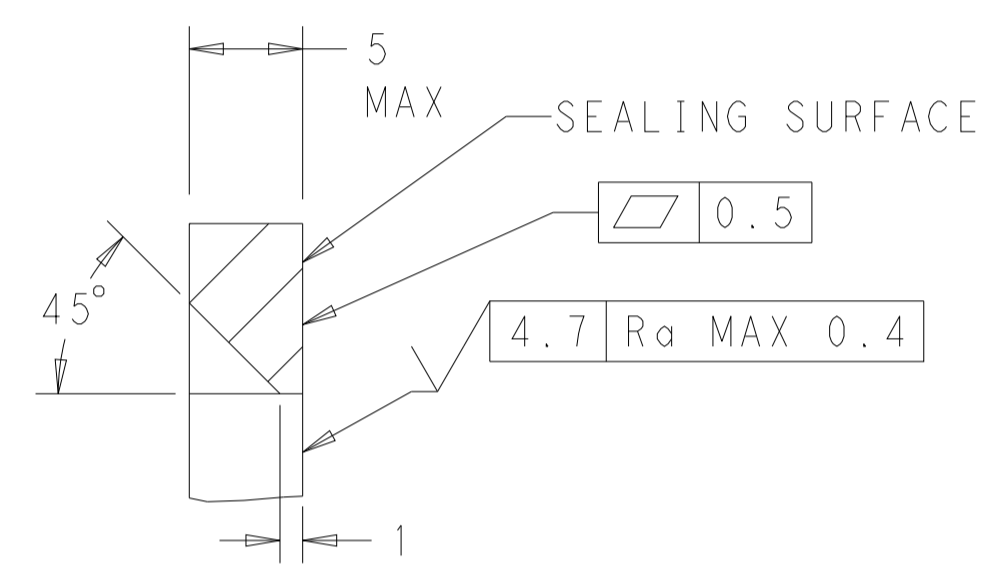
REVISIONS				
P.	LTN.	DESCRIPTION	DATE	APVD.
-	-	SEE SHEET 1	-	-



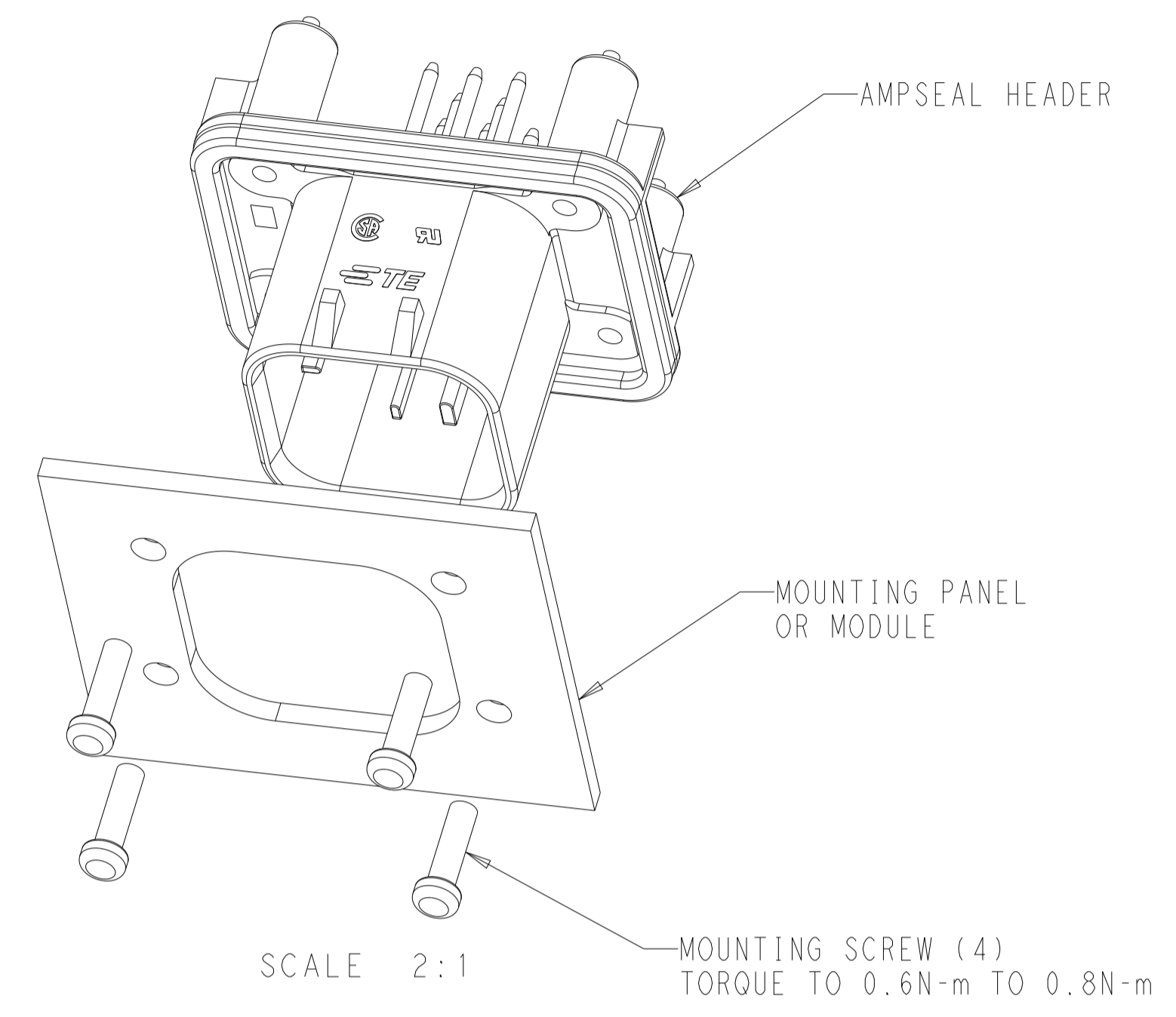
RECOMMENDED MOUNTING HOLE LAYOUT
 FOR 5.0 MAX THICK PANEL



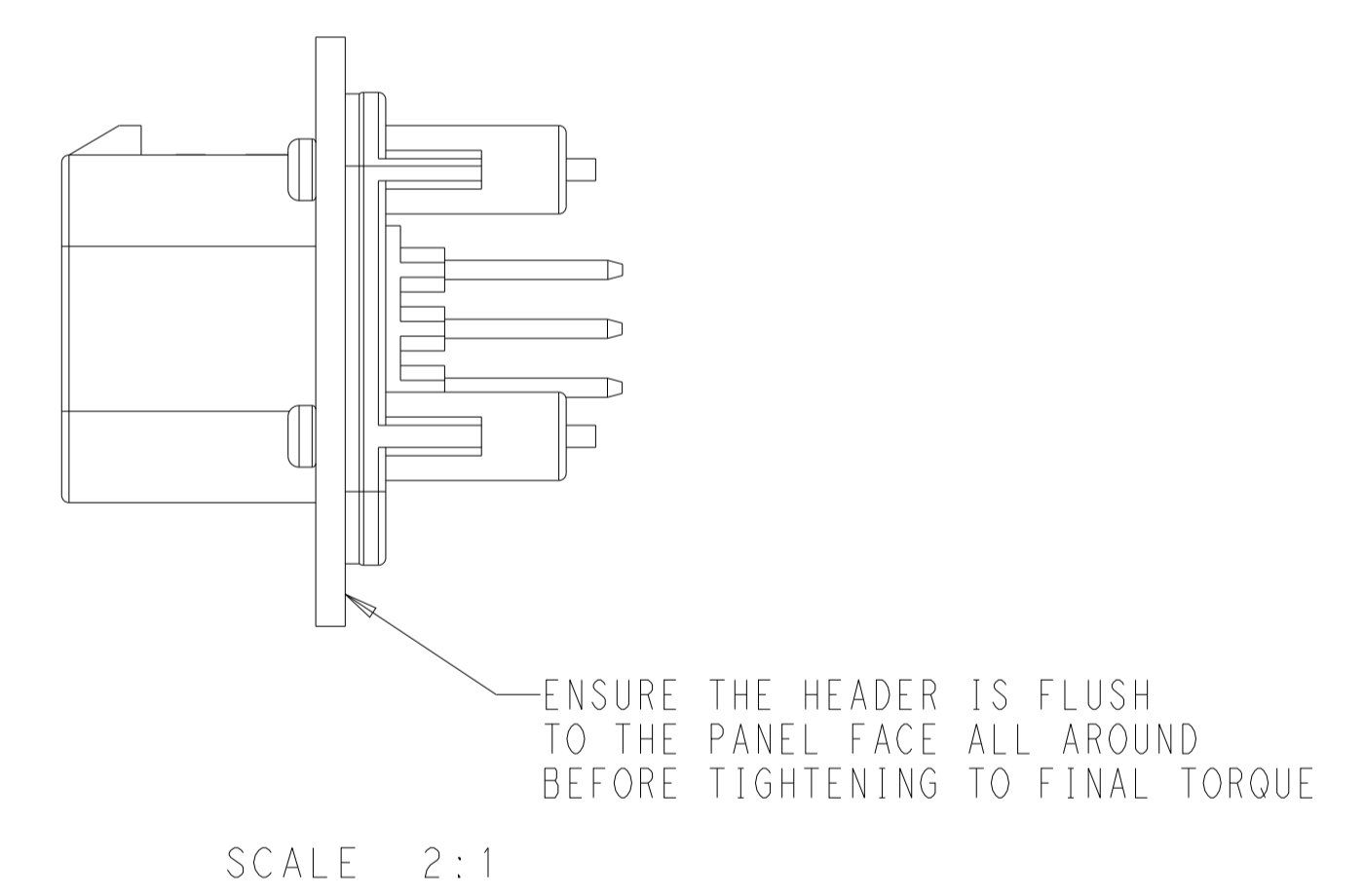
SECTION A-A
 OPTIONAL CONSTRUCTION IF PANEL
 THICKNESS IS GREATER THAN 2.0



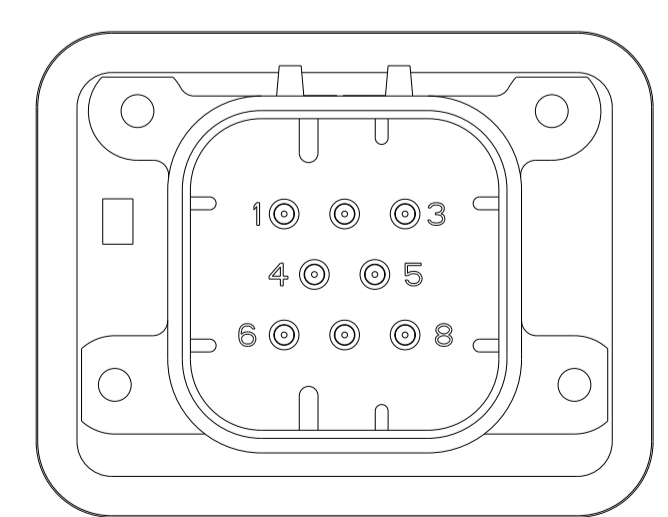
SECTION A-A
 OPTIONAL CONSTRUCTION IF PANEL
 THICKNESS IS GREATER THAN 2.0



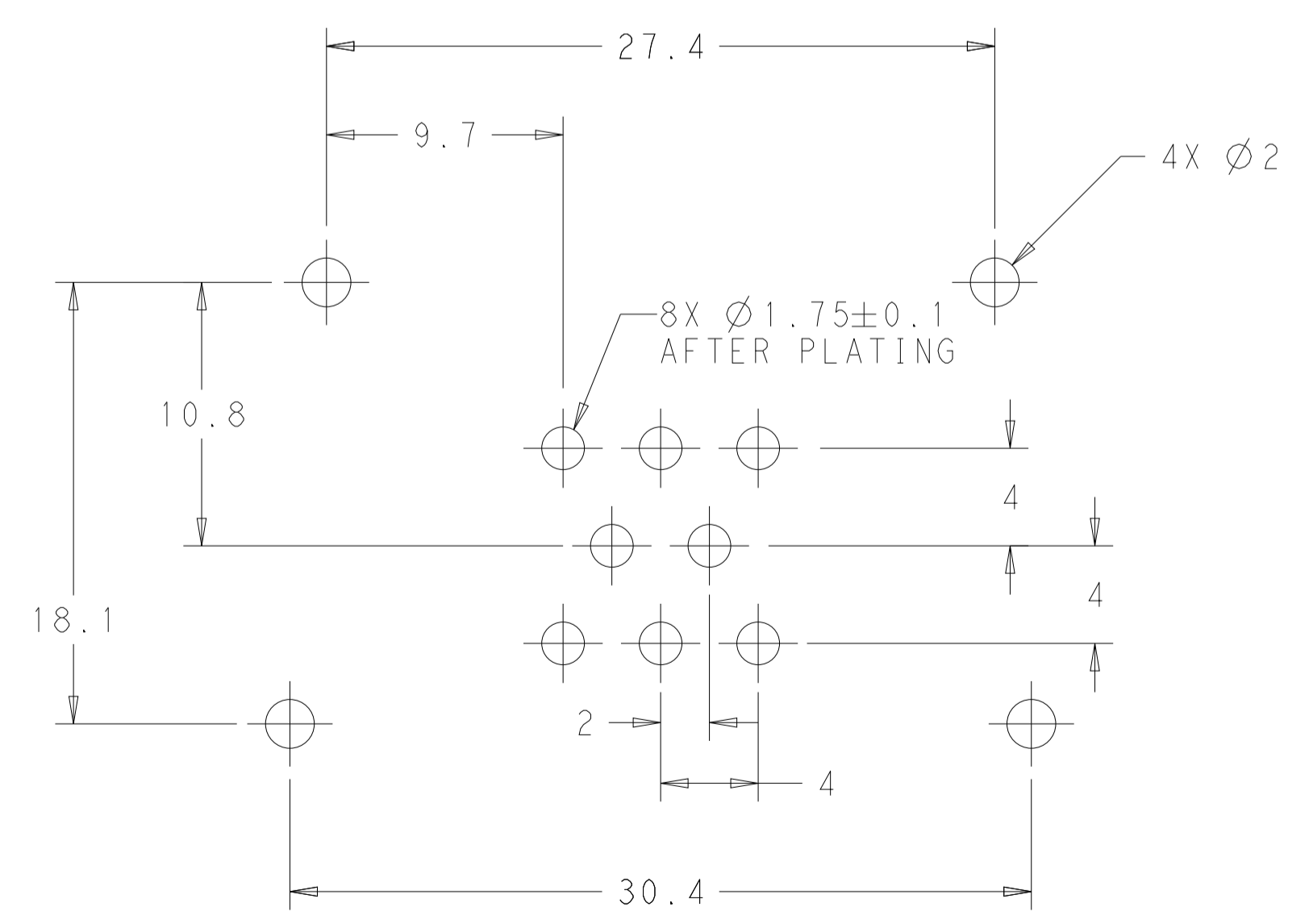
SCALE 2:1



SCALE 2:1



776276-2 & 1-776276-2
 KEY LOCATION
 SCALE 2:1



RECOMMENDED P.C. BOARD LAYOUT
 FOR 1.57 THICK P.C. BOARD

THIS DRAWING IS A CONTROLLED DOCUMENT.		OWN: D. STRAUSSER 21 JAN 2010	TE Connectivity
DIMENSIONS: mm		CHK: D. STRAUSSER 22 MAR 2010	
TOLERANCES UNLESS OTHERWISE SPECIFIED:		APVD: D. STRAUSSER 27 APR 2010	NAME: ASSEMBLY, HEADER 8 POSITION VERTICAL, AMPSEAL WITH FLANGE SEAL
0 PLC ±0.2		PRODUCT SPEC: 108-1329	SIZE: CAGE CODE DRAWING NO. RESTRICTED TO
1 PLC ±0.2		APPLICATION SPEC: 114-16016	SCALE: 4:1 SHEET 2 OF 2 REV B14
2 PLC ±0.2		WEIGHT: 13.32g	
3 PLC ±0.2		CUSTOMER DRAWING	
4 PLC ±0.2			
ANGLES FINISH			